

HOWARD T. TRIGG
COUNTY SURVEYOR

RECEIVED

OCT 13 1916

5-12530-41
12562-3
84-5
109

AMARILLO, TEXAS Oct. 9th 1916.

Hon. J.T. Robison, Referred to Map

Austin, Texas. Part of Sketch File No. 5
Carson County.

12606-7
12628-9
12650-1

Dear Sir:-

The owner, Mr. Lee Bivins, of the strip surveys as shown on the blue print enclosed has been trying to get corrected field notes of same from the County Surveyor of Carson County, Mr. Elston. He refuses to make these corrected field notes in accordance with the original corners on the east line of block 3 and S, which control the position of the east line of the strip surveys.

I recently made a resurvey of the east line of blocks 3 and S as shown on blue print and found the piles of stone as called for in the original field notes of surveys 18 and 12 block 3. I also found one of the C.W. trees as called for in the original field notes of said 12. These corners are unmistakable, especially the one at the N.E. corner of survey No. 12 on account of the alignment back to the N.E. corner of survey No. 1 block 3 fitting so closely with the original calls for the C.W. tree and the crossings of the two creeks or draws by allowing their portion of their excess as found between the N.E. corner of survey No. 12 and 1 block 3. These piles of stone found show to be very old.

There is a fence running directly from the old monument at the N.E. corner of survey No. 1 block 3 to the S.E. corner of survey No. 1 block S. There is some evidence of the old monument at the N.E. corner of survey No. 1 block 3 but no evidence on the ground for the S.E. corner of survey No. 1 block S. There is an iron pipe at this corner supposed to have been placed there by P.G. Omohondro and further shown by James Gray's field notes of the alternate sections as surveyed by him in block T. The field notes of these alternate surveys are on record at Panhandle in the Surveyor's office. I understand that Mr. P.G. Omohondro

Counter 17353

HOWARD T. TRIGG
COUNTY SURVEYOR

J.T.R.2

AMARILLO, TEXAS

surveyed block 5 I & G N R R Co. for Mr. Burk Burnett who owns the greater portion if not all of this block and has the greater portion under one enclosure. Has Mr. Omohondro or any one else ever returned corrected field notes for block 5?. This fence near the west line of block 5 passes about 198 vrs. west of the original pile of stone at the N.E. corner of survey No. 12 and about 191 vrs. west of the original pile of stone at the N.E. corner of survey No. 18 block 3.

Mr. Elston has surveyed some in block 3, 5 and Y2 using this fence line near the east line of block 3 as the proper line and disregarding the original piles of stone east of this fence; also disregarding the Summerfield corners on surveys 22 and 23 block Y2 and others and shifting these surveys further west.

By using this fence line as a proper base from which to locate these lands it would cut about 300 acres off the east side of the strip surveys which rightfully belongs to Mr. Lee Bivins and the State. In several instances which I can recall Mr. Elston has paid no respect to the original corners made by Summerfield in block Y2, Hutchinson and Carson Counties also the Mc Clelland corners in block B 4, Armstrong Co.

What would you suggest in regard to getting corrected field notes on this strip of surveys?

Mr. Twichell corrected a number of surveys lying N.E. of this strip along the Canadian River and returned corrected field notes to your office while I was with him. He has never made the connections to the original corners which control the position and boundaries of this strip that I have recently made.

By resigning as County Surveyor of Potter County and securing from you an appointment as State Surveyor for this special work I can make these corrections with a complete and full report on these strip surveys at a minimum expense to the owner if you see fit to make the appointment.

The three circles on blue print indicate original corners. The E. & W. lines of blocks 3, 5, & 8 are based on a perpendicular course

Counter 12354

No corr. files for always
in blk 5 I & G. N. R. Co.
Clock

G¹

HOWARD T. TRIGG
COUNTY SURVEYOR

J.T.R.3

AMARILLO, TEXAS

taken from the line connecting the original corners found at the N.E. corner of survey 1 and 12 block 3. This one line of the three different lines caused by the location of the original corners on the west line of block 5 I & G N R R Co. is the one nearest true course which is the reason for using this as the course for the east and west lines in these blocks. By using this course it avoids any conflicts in the vicinity of 25 Y 2 that either of the other two courses might cause. You may retain the blue print for future information.

Respectfully,

Howard T. Trigg.

Carson Co.

Sketch File No. 5

Carson County

Howard T. Trigg's Sk. & Statement

Surveys in N.W. Cor. of County.

Filed Oct. 13th, 1916 ~~108~~

J. H. Walker, Comm.
J. Robinson

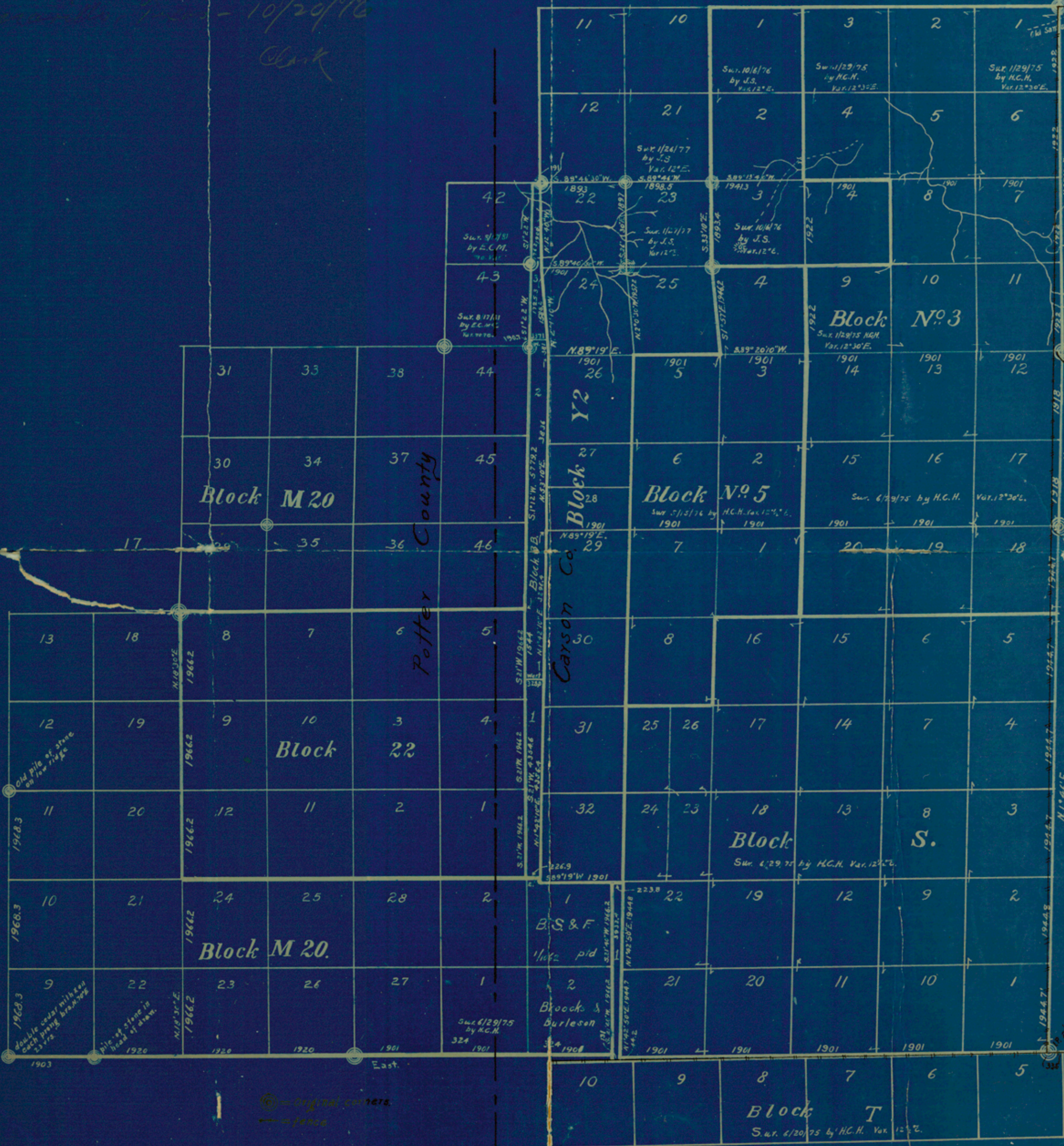
File Clerk

Descriptive: _____

G4

Counter 17356

*See [unclear] [unclear] [unclear]
[unclear] [unclear] [unclear] - 10/29/16
[unclear]*



⊙ - Original corners.
— fence