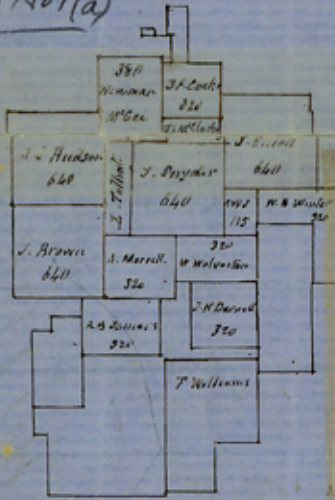
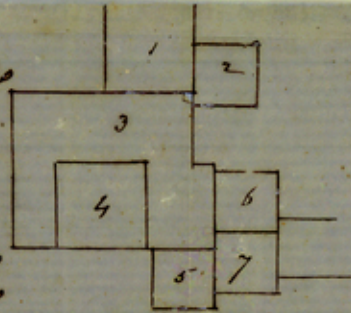


sk File No 1(a)



1. J. D. Moffat 640
2. Wilson Robertson
3. Robt Frammell
4. Jas Daanpat 770
5. J H Bacon 320
6. Wm B. Hughes 320
7. W. Crowder 320



sk. File 1(a)  
Cass Co

I certify the above is a correct sketch from  
 the County of Cass of Cass County this first 4<sup>th</sup> 1854  
 J. B. McKays  
 County Surveyor  
 Cass County  
 16 Mi. S. 66 E. Linden

The State of Iowa  
 County of Cass  
 I do hereby certify that the above  
 sketch is correct as taken from the  
 records of my Office given under my  
 Hand this September 18<sup>th</sup> 1854

Thomas Heath  
 County Surveyor Cass County



File 1

Sketch Files 1 and 1(a)

1(a) attached within

Cass County  
near the North West Corner of  
the County

Pick Sept 14/57

1 - 18 Mi. N 43° W. Linden

1(a) - 16 Mi. S 66° E. Linden

14/57

W. W. W.

Counter 17393