

GRANTEE Thos. J. Chambers

SUR. NO. _____

BLK. _____

COUNTY _____

STATE _____

See Sketch File 4

SURVEYED BY A. N. B. Tompkins

DATE Nov. 7, 1859

CALCULATED BY Curtis R. Hale

DATE June 22, 1950

T268-249-3M

STA.	COURSE	VS-DISTANCE	COS	SINE	LATITUDES		DEPARTURES		D. M. D.	N. D. A.	S. D. A.
					N	S	E	W			
	Beg. at Mouth of Turtle Bayou -										
	S 76° W	180.	2419 ✓	.9703 ✓		43.5		174.6			
	S 85° W	130.	.0872 ✓	.9962 ✓		11.3		129.5			
	S 89° W	160.	.0175 ✓	.9998 ✓		2.8		160.0			
	N 86° W	360.	.0698 ✓	.9976 ✓	25.1			359.1			
	S 89° W ✓	110	.0175 ✓	.9998 ✓		1.9		110.0			
	N 67° W	110	.3907 ✓	.9205 ✓	43.0			101.2			
	N 83° 30' W	490	.1132 ✓	.9936 ✓	55.5			486.9			
	S 83° 30' W	270	.1132 ✓	.9936 ✓		30.6		268.3			
	S 73° W	1673	.2924 ✓	.9563 ✓		489.2		1599.9			
	S 66° W	380	.4067 ✓	.9135 ✓		154.5		347.1			
	S 32° W ✓	219	.8480 ✓	.5299 ✓		185.7		116.0			
	S 10° E	342	.9848 ✓	.1736 ✓		336.8	59.4				
	S 41° E	305	.7547 ✓	.6561 ✓		230.2	200.1				
	S 29° E	171	.8746 ✓	.4848 ✓		149.6	82.9				
	S 17° W	285	.9563 ✓	.2924 ✓		272.5		83.3			
	S 23° W	229	.9205 ✓	.3907 ✓		210.8		89.5			
	S 44° W	485	.7193 ✓	.6947 ✓		348.9		336.9			
	N 78° W	195	.2079 ✓	.9781 ✓	40.5			190.7			
	S 40° E	2356	.7660 ✓	.6428 ✓	(164.1)	1804.7	1514.4	(4553.00)			
	S 39° E	285	.7771 ✓	.6293 ✓		221.5	1856.8	179.4			
	S 15° E	76	.9659 ✓	.2588 ✓		73.4		19.7			
	S 4° E	827	.9976 ✓	.0698 ✓		825.0		56.9			
	S 25° W	38	.9063 ✓	.4226 ✓		34.4		16.1			
	N 86° W	95	.0697 ✓	.9976 ✓	6.6			94.8			
	S 15° E	1074	.9659 ✓	.2588 ✓		1037.4	278.0				
	S 39° W	509	.7771 ✓	.6293 ✓		395.5		320.3			
	S 55° W	912	.5736 ✓	.8192 ✓		523.1		747.1			

With Meanders of Turtle Bay

to mouth of Turtle Bayou

to canal

→ at Gov. S.E. cor. Shadrach Survey
(W 883.2 S 33.5 ✓)

→ 160 v. mouth of Small Bayou
5746 vs. W 3821.4 ✓

at 300 v. Anderson Pass

170.7 (7383.3 ✓) (2390.8) (5731.3)

Counter 17530

GRANTEE..... SUR. NO..... BLK..... COUNTY..... STATE.....

SURVEYED BY..... DATE..... CALCULATED BY..... DATE.....

T266-249-3M

STA.	COURSE	DISTANCE	COS	SINE	LATITUDES		DEPARTURES		D. M. D.	N. D. A.	S. D. A.
					N	S	E +	W -			
②	N 78° W	30 ⁹	.2079 ✓	.9781 ✓	64.2			302.2			
	S 42° W	152	.7431 ✓	.6691 ✓	63.2			297.3			
	S 63° W <small>crossing W. Pass</small>	219	.4540 ✓	.8910 ✓		113.0		101.7			
	N 84° W	665	.1045 ✓	.9945 ✓		99.4		195.1			
	N 61° W	342	.4848 ✓	.8746 ✓	69.5			661.3			
	N 83° W	114	.1219 ✓	.9925 ✓	165.8			299.1			
	N 26° W	608	.8988 ✓	.4384 ✓	13.9			113.1			
	N 65° W	162	.4226 ✓	.9063 ✓	546.5			266.5			
	N 5° E	76	.9962 ✓	.0872 ✓	68.5		6.6	146.8			
	N 20° E	100	.9397 ✓	.3420 ✓	75.7		34.2				
	N 86° E	570	.0698 ✓	.9976 ✓	94.0		568.6				
	N 35° W	550	.8192 ✓	.5736 ✓	39.8			375.5			
	N 3° E	300	.9986 ✓	.0523 ✓	450.6						
	N 26° E <small>West's Outlet Hole in the ground</small>	80	.8988 ✓	.4384 ✓	299.6		15.7				
					71.9	7595.7	3050.8	35.1	8132.6		
					2130.7						
	N 20° E	100	.9397 ✓	.3420 ✓	94.0		34.2				
	N 38 1/2° E	100	.7826 ✓	.6225 ✓	78.3		62.2				
	N 20° E	100	.9397 ✓	.3420 ✓	94.0		34.2				
	N 38° 30' E	30	.7826 ✓	.6225 ✓	23.5		18.7				
	N 32° E	100	.8486 ✓	.5299 ✓	84.8		53.0				
	N 47 1/2° E	400	.6724 ✓	.7402 ✓	269.0		296.1				
	N 31° E	140	.8572 ✓	.5150 ✓	120.0		72.1				
	N 20° E	70	.9397 ✓	.3420 ✓	65.8		23.9				
	N 10° E	20	.9848 ✓	.1736 ✓	19.7		3.5				
	N 27° E	90	.8910 ✓	.4540 ✓	80.2		40.9				
	N 11° E	70	.9816 ✓	.1908 ✓	68.7		13.4				
	N 56° E	135	.5592 ✓	.8290 ✓	75.5		111.9				
		1355			(3204.2)	(7595.7)	(3815.1)	(8132.6)			

Counter 17531

GRANTEE..... SUR. NO..... BLK..... COUNTY..... STATE.....

SURVEYED BY..... DATE..... CALCULATED BY..... DATE.....

T268-249-3M

STA.	COURSE	V.S. DISTANCE	COS	SINE	LATITUDES		DEPARTURES		D. M. D.	N. D. A.	S. D. A.
					N	S	E	W			
X. River	N 11° W	191 ✓	9816 ✓	1908 ✓	187.5			36.4			
	N 59° W	344 ✓	5150 ✓	8572 ✓	177.2			294.9			
	N 53° W	475 ✓	6018 ✓	7986 ✓	285.9			379.3			
	N 51° 30' W	190 ✓	6225 ✓	7826 ✓	118.3			148.7			
	N 13° E ✓	30 ✓	9744 ✓	2250 ✓	29.2		6.8				
	N 49° W	900 ✓	6561 ✓	7547 ✓	590.5			679.2			
	N 35° W	120	8191 ✓	5736 ✓	98.3			68.8			
	N 20° W	140	9397 ✓	3420 ✓	131.6			47.9			
	N 2° E	730	9994 ✓	0349 ✓	729.6		25.5				
	N 24° W	200	9135 ✓	4067 ✓	182.7			81.3			
	N 40° W	140	7660 ✓	6428 ✓	107.2			90.0			
	N 52° W	260	6157 ✓	7880 ✓	160.1			204.9			
	N 60° W	50	5000 ✓	8660 ✓	25.0			43.3			
	N 76° W	180	2419 ✓	9703 ✓	43.5			174.7			
	N 54° W	200	5878 ✓	8090 ✓	117.6			161.8			
	N 45° W	200	7070 ✓	7070 ✓	141.4			141.4			
	N 37° W	600	7986 ✓	6018 ✓	479.2			361.1			
	N 35° W	500	8191 ✓	5736 ✓	409.6			286.8			
Cor. on E. bank River.	N 17° W ^{4th. 2" C}	145	9563 ✓	2924 ✓	138.7 (7357.3)	(7595.7)	(3847.4)	(11,375.5)	42.4		
	N 43° 30' E	15420	725374 ✓	688355 ✓	11,185.3		10,614.4				
	S 40° E	320	7660 ✓	6428 ✓		245.1	205.7				
	S 13° W	280	9744 ✓	2250 ✓		272.8		63.0			
	South	130				130.0					
	S 27° W	50	8910 ✓	4540 ✓		44.6		22.7			
	S 14° E	70	9703 ✓	2419 ✓		67.9	16.9				
	S 5° W	90	9962 ✓	0872 ✓		89.7		7.8			
					(18,542.6)						
						(8445.8)	(14684.4)	(11,469.0)			

Counter 17532

GRANTEE..... SUR. NO..... BLK..... COUNTY..... STATE.....

④ SURVEYED BY..... DATE..... CALCULATED BY..... DATE.....

T268-249-3M

STA.	COURSE	DISTANCE	COS	SINE	LATITUDES		DEPARTURES		D. M. D.	N. D. A.	S. D. A.
					N	S	E	W			
	S 28° W	230	8829 ✓	4695 ✓		203.1		108.0			
	S 57° 30' W	160	.5373 ✓	8434 ✓		86.0		134.9			
	South	160				160.0					
	S 41° 30' E	90	7489 ✓	6626 ✓		67.4	59.6				
	S 6° 30' E	50	9936 ✓	1132 ✓		49.7	5.7				
	S 25° W	100	.9063 ✓	4226 ✓		90.6		42.3			
	S 28° E	70	8829 ✓	4695 ✓		61.8	32.9				
	S 3° W	170	.9986 ✓	.0523 ✓		169.8		8.9			
	S 6° W	160	.9945 ✓	.1045 ✓		159.1		16.7			
	S 28° W	200	8829 ✓	4695 ✓		176.6		93.9			
	S 9° W	70	9877 ✓	1564 ✓		69.1		10.9			
	S 48° W	160	.6691 ✓	.7431 ✓		107.1 ✓		118.9			
	S 62° 30' W	130	.4617 ✓	.8870 ✓		60.0		115.3			
	S 37° W	500	.7986 ✓	.6018 ✓		399.3		300.9			
	S 16° W	30	.9613 ✓	.2756 ✓		28.8		8.3			
	S 44° W	80 ✓	.7193 ✓	.6946 ✓		57.5		55.6			
	S 14° W	250	.9703 ✓	.2419 ✓		242.6		60.5			
	S 3° E	380	.9986 ✓	.0523 ✓		379.5	19.9				
	S 33° E	30	8387 ✓	5446 ✓		25.2	16.3				
	S 4° 30' E	130	.9969 ✓	.0785 ✓		129.6	10.2				
	S 16° W	100	.9613 ✓	.2756 ✓		96.1		27.6			
	S 41° 30' W	110	.7490 ✓	.6626 ✓		82.4		72.9			
	S 15° 30' W	90	.9636 ✓	.2672 ✓		86.7		24.0			
	S 46° 30' W	400	.6884 ✓	.7254 ✓		275.4		290.2			
	S 30° W	180	.8660 ✓	.5000 ✓		155.9		90.0			
	S 9° W	130	9877 ✓	1564 ✓		128.4		20.3			
	S 55° W	110	.5736 ✓	.8192 ✓		63.1	367.2	90.1			
						(12056.6)	(17829.0)	(13159.2)			

Counter 17533

GRANTEE..... SUR. NO..... BLK..... COUNTY..... STATE.....

5 SURVEYED BY..... DATE..... CALCULATED BY..... DATE.....

T268-249-3M

STA.	COURSE	DISTANCE	COS	SINE	LATITUDES		DEPARTURES		D. M. D.	N. D. A.	S. D. A.
					N	S	E	W			
	S 27° W	180	.8910 ✓	.4540 ✓		160.4		81.7			
	S 22° 30' E	50	.9239 ✓	.3827 ✓		46.2	19.1				
	S 7° W	70	.9925 ✓	.1219 ✓		69.5		8.5			
	S 31° W	80	.8572 ✓	.5150		68.6		41.2 ✓			
	N 70° W	120	.3420 ✓	.9397 ✓	41.0			112.8			
	S 24° W	70	.9135 ✓	.4067 ✓		63.9		28.5			
	N 89° W	90	.0174 ✓	.9998 ✓	1.6			89.9			
	S 63° W	60	.4540 ✓	.8910 ✓		27.2		53.5			
	S 21° W	140	.9336 ✓	.3584 ✓		130.7		50.2			
	S 36° 30' W	120	.8039 ✓	.5948 ✓		96.5		71.4			
	S 7° 30' W	100	.9914 ✓	.1305 ✓		99.1		13.0			
	S 59° W	120	.5150 ✓	.8572 ✓		61.8		102.9			
	S 15° W	40	.9659 ✓	.2588 ✓		38.8		10.4			
	S 48° W	300	.6691 ✓	.7431 ✓		200.7		222.9			
	S 22° 30' W	220	.9239 ✓	.3827 ✓		203.3		84.2			
	S 2° 30' W	270	.9990 ✓	.0436 ✓		269.7		11.8			
	S 41° W	250	.7547 ✓	.6560 ✓		188.7		164.0			
	S 46° W	90	.6947 ✓	.7193 ✓		62.5		64.7			
	S 3° E	70	.9986 ✓	.0523 ✓		69.9	3.7				
	S 23° W	110	.9205 ✓	.3907 ✓		101.3 ✓		43.0			
	S 19° 30' E	60	.9426 ✓	.3338 ✓		56.6	20.0				
	S 2° W	90	.9994 ✓	.0349 ✓		89.9 ✓		3.1			
	South	20				20.0					
	S 47° E	100	.6820 ✓	.7313 ✓		68.2	73.1				
	S 27° W	60	.8910 ✓	.4540 ✓		53.5		27.2			
	S 13° E	50	.9744 ✓	.2250 ✓		48.7	11.2				
	S 56° W	60	.5591 ✓	.8290 ✓		33.5 ✓		49.7			

N. B. Line Carroll for Crisley

(18,585.2) (14,385.8) (14,956.1) (14,493.8)

W 1207.5

County 17539

GRANTEE..... SUR. NO..... BLK..... COUNTY..... STATE.....

⑥ SURVEYED BY..... DATE..... CALCULATED BY..... DATE.....

T260-249-3M

STA.	COURSE	DISTANCE	COS	SINE	LATITUDES		DEPARTURES		D. M. D.	N. D. A.	S. D. A.
					N	S	E	W			
	S 20° 30' E	60	9367 ✓	3502 ✓		56.2	21.0				
	S 20' W	80	9397 ✓	3420 ✓		75.2		27.4 ✓			
	S 31' W	120	8572 ✓	5150 ✓		102.9		61.8			
	S 24' E	280	9135 ✓	4067 ✓		255.8	113.9				
	S 68' E	120	3746 ✓	9272 ✓		45.0	111.3				
	S 83' E	100	1219 ✓	9925 ✓		12.2	99.2				
	S 42° 30' E	160	7373 ✓	6756 ✓		118.0	108.1				
	S 32° 30' E	140	8434 ✓	5373 ✓		118.1	75.2				
	S 55° 30' E	50	5664 ✓	8241 ✓		28.3	41.2				
	S 1° 30' W	100	9997 ✓	0262 ✓		100.0		2.6			
	S 27-30 E	90	8870 ✓	4617 ✓		79.8	41.6				
	S 78' E	50	2079 ✓	9781 ✓		10.4	48.9				
	N 42' E	70	7431 ✓	6691 ✓	52.0		46.8				
	N 20' E	50	9397 ✓	3420 ✓	47.0		17.1				
	S 52' E	40	6157 ✓	7880 ✓		24.6	31.5				
	S 20' E	40	9397 ✓	3420 ✓		37.6	13.7				
	S 78' E	150	2079 ✓	9781 ✓		31.2	146.7				
	S 3' W	60	9986 ✓	0523 ✓		59.9		3.1			
	S 35' E	60	8192 ✓	5736 ✓		49.2	34.4				
	S 83° 30' E	60	1132 ✓	9936 ✓		6.8	59.6				
	S 28' E	110	8829 ✓	4695 ✓		97.1	51.6				
	S 89° 30' E	90	0087 ✓	0100 ✓		0.8	90.0				
	N 65' E	60	4226 ✓	9063 ✓	25.4		54.4				
	S 40° 30' E	160	7604 ✓	6494 ✓		121.7	103.9				
	S 58' E	60	5299 ✓	8480 ✓		31.8	50.9				
	N 48' E	160	6691 ✓	7431 ✓	107.1		118.9				
	S 13' E	200	9744 ✓	2250 ✓	231.5	194.9	45.0				
					15,816.7 ✓	16,043.3	(16,481.0)	(14,588.7)			
									5-1649.9	E 1437.4	
									4583.0 Ft	3992.77 Ft	
										Counter 17535	

GRANTEE..... SUR. NO..... BLK..... COUNTY..... STATE.....

SURVEYED BY..... DATE..... CALCULATED BY..... DATE.....

T268-249-3M

STA.	COURSE	DISTANCE	COS	SINE	LATITUDES		DEPARTURES		D. M. D.	N. D. A.	S. D. A.
					N	S	E	W			
5	61° E	60	4848 ✓	8746 ✓		29.0	52.5				
5	3° W	150	9986 ✓	0523 ✓		149.8		7.8			
5	36° E	70	8091 ✓	5878 ✓		56.6	41.1				
N	88° E	100	0349 ✓	9994 ✓	3.5		99.9				
N	54° 30' E	80	5807 ✓	8141 ✓	46.5		65.1				
N	77° E	60	2250 ✓	9744 ✓	13.5		58.5				
S	15° E	120	9659 ✓	2588 ✓		115.9	31.0				
S	35° E	250	8192 ✓	5736 ✓		204.8	143.4				
N	76° E	100	2419 ✓	9703 ✓	24.2		97.0				
S	7° E	170	9925 ✓	1219 ✓		168.7	20.7				
S	30° E	60	8660 ✓	5000 ✓		52.0	30.0				
140v Bayou	S 12° E	170	9781 ✓	2079 ✓		166.3	35.3				
S	58° 30' W	60	5225 ✓	8526 ✓		31.4		51.2			
N	83° W	60	1219 ✓	9925 ✓	7.3			59.6			
S	52° W	120	6157 ✓	7880 ✓		73.9		94.6			
S	3° W	130 ✓	9986 ✓	0523 ✓		129.8		6.8			
S	23° E	70	9205 ✓	3907 ✓		64.4	27.3				
S	45° E	60	7071 ✓	7071 ✓		42.4	42.4				
opp. rd 1/2 mi S 1/2	S 80° W	150	1736 ✓	9848 ✓		26.0		147.7			
1	N 87° W	70	0523 ✓	9986 ✓	3.7			69.9			
S	67° W	70	3907 ✓	9205 ✓		27.3		64.4			
S	68° W	80	3746 ✓	9272 ✓		30.0		74.2			
S	83° W	30	1219 ✓	9925 ✓		3.7		29.8			
S	68° W	80	3746 ✓	9272 ✓		30.0		74.2			
S	73° W	50	2924 ✓	9563 ✓		14.6		47.8			
S	89° W	70	0175 ✓	9998 ✓		1.2		70.0			
S	68° 30' W	140	3665 ✓	9304 ✓		51.3		130.3			

(18,915.4) (17,512.4) (17,225.2) (15,517.0)

S. 1370.4 W 184.1
3806.66 511.39 Ft.

Counter 17536

140

1370.4
9916.7

W 184'

GRANTEE..... SUR. NO..... BLK..... COUNTY..... STATE.....

8 SURVEYED BY..... DATE..... CALCULATED BY..... DATE.....

T268-249-3M

STA.	COURSE	DISTANCE	COS	SINE	LATITUDES		DEPARTURES		D. M. D.	N. D. A.	S. D. A.
					N	S	E	W			
	S 42° W	110	.7431 ✓	.6691 ✓		81.7		73.6			
	S 30° W	70	.8660 ✓	.5000 ✓		60.6		35.1			
	S 24° W	150	.9135 ✓	.4067 ✓		137.0		61.0			
	- S 67° W	210	.3907 ✓	.9205 ✓		82.0		193.3			
	S 65.30° W	70	.4147 ✓	.9100 ✓		29.0		63.7			
	S 41° W	180	.7547 ✓	.6561 ✓		135.8		118.1			
	S 28° W	70	.8829 ✓	.4695 ✓		61.8		32.9			
	S 40° W	100	.7660 ✓	.6428 ✓		76.6		64.3			
	S 55° W	210	.5736 ✓	.8192 ✓		120.5		172.0			
	S 38° W	40	.7880	.6157		31.5		24.6			
	S 47° W	110	.6820	.7314		75.0		80.4			
	S 63° W	130	.4540 ✓	.8910 ✓		59.0		115.8			
	S 40° W	60	.7660 ✓	.6428 ✓		46.0		38.6			
	S 31° W	150	.8572 ✓	.5150 ✓		128.6		77.2			
	S 2° E	2.50	.9994 ✓	.0349 ✓		249.9	8.7				
	S 10° E	160	.9848 ✓	.1736 ✓		157.6	27.8				
	S 6° E	30	.9945 ✓	.1045 ✓		29.8	3.1				
	S 20° W	100	.9397 ✓	.3420 ✓		94.0		34.2			
	S 43° W	100	.7314 ✓	.6820 ✓		73.1		68.2			
	S 65° W	130	.4226 ✓	.9063 ✓		54.9		117.8			
	N 75° W	360	.2588 ✓	.9659 ✓	93.2			347.7		W 1678.5	
					19,008.6	19,296.8	17,264.8	17,235.5			
						288.8	29.3				

at 70 W. Ferry

208
CALCULATED

S. 4697.77 Ft W 4662.5 Ft
Counter 17537

GRANTEE
SURVEYED BY

BLK. SUR. NO. Chambers Co. Sketch File 4 B

COUNTY STATE CALCULATED BY DATE

Computations of Thos J. Chambers Grant

STA	COURSE	DISTANCE	COB	SINE	DEPARTURES	W	E	S	D. M. D.	N. D. A.	S. D. A.
1	N 42° W	110	7421	✓				81.7			
2	S 32° W	70	8220	✓				60.4			
3	S 27° W	120	9122	✓				97.0			
4	N 0° W	210	3221	✓				22.0			
5	N 10° 30' W	70	4127	✓				29.0			
6	N 11° W	180	7227	✓				32.8			
7	N 18° W	100	8324	✓				21.8			
8	N 40° W	100	7020	✓				72.4			
9	S 22° W	110	2722	✓				120.2			
10	S 20° W	40	7820	✓				21.2			
11	N 47° W	110	4222	✓				72.0			
12	N 42° W	130	4320	✓				89.0			
13	N 40° W	60	7020	✓				42.0			
14	S 21° W	120	8722	✓				92.0			
15	S 21° E	40	4224	✓				27.4			
16	S 10° E	100	6820	✓				67.0			
17	S 10° W	30	6422	✓				10.2			
18	N 10° W	100	4224	✓				34.0			
19	N 23° W	100	7224	✓				62.0			
20	N 22° W	130	4420	✓				94.0			
21	N 22° W	250	4222	✓				182.0			
Total											
17538											

Counter 17538

GRANTEE..... SUR. NO..... BLK..... COUNTY..... STATE.....

SURVEYED BY..... DATE..... CALCULATED BY..... DATE.....

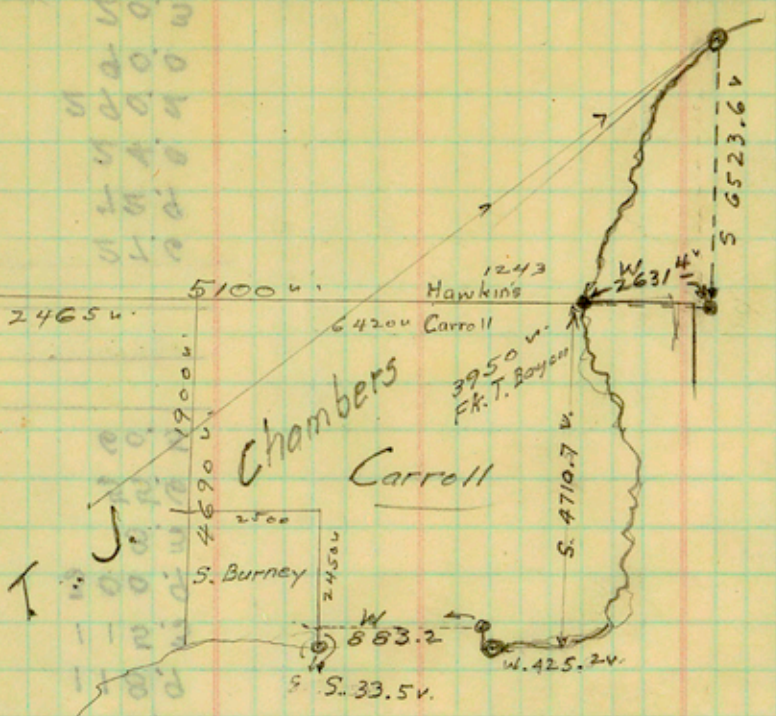
T268-249-3M

STA.	COURSE	VS. DISTANCE	COS	SINE	LATITUDES		DEPARTURES		D. M. D.	N. D. A.	S. D. A.
					N	S	E	W			
X. River	N 11° W	191 ✓	9816 ✓	1908 ✓	187.5			36.4			
	N 59° W	344 ✓	5150 ✓	8572 ✓	177.2			294.9			
	N 53° W	475 ✓	6018 ✓	7986 ✓	285.9			379.3			
	N 51° 30' W	190 ✓	6225 ✓	7826 ✓	118.3			148.7			
	N 13° E ✓	30 ✓	9744 ✓	2250 ✓	29.2		6.8				
	N 49° W	900 ✓	6561 ✓	7547 ✓	590.5			679.2			
	N 35° W	120	8191 ✓	5736 ✓	98.3			68.8			
	N 20° W	140	9397 ✓	3420 ✓	131.6			47.9			
	N 2° E	730	9994 ✓	0349 ✓	729.6		25.5				
	N 24° W	200	9135 ✓	4067 ✓	182.7			81.3			
	N 40° W	140	7660 ✓	6428 ✓	107.2			90.0			
	N 52° W	260	6157 ✓	7880 ✓	160.1			204.9			
	N 60° W	50	5000 ✓	8660 ✓	25.0			43.3			
	N 76° W	180	2419 ✓	9703 ✓	43.5			174.7			
	N 54° W	200	5878 ✓	8090 ✓	117.6			161.8			
	N 45° W	200	7070 ✓	7070 ✓	141.4			141.4			
	N 37° W	600	7986 ✓	6018 ✓	479.2			361.1			
	N 35° W	500	8191 ✓	5736 ✓	409.6			286.8			
Cor. on E. bank River	N 17° W ^{As. 2" C}	145	9563 ✓	2924 ✓	138.7 (7357.3)	(7595.7)	(3847.4)	(11375.5)	42.4		
	N 43° 30' E	15420	725374 ✓	688355 ✓	11,185.3		10,614.4				
	S 40° E	320	7660 ✓	6428 ✓		245.1	205.7				
	S 13° W	280	9744 ✓	2250 ✓		272.8		63.0			
	South	130				130.0					
	S 27° W	50	8910 ✓	4540 ✓		44.6		22.7			
	S 14° E	70	9703 ✓	2419 ✓		67.9	16.9				
	S 5° W	90	9962 ✓	0872 ✓		89.7		7.8			
					(18,542.6)						
						(8445.8)	(14684.4)	(11,469.0)			

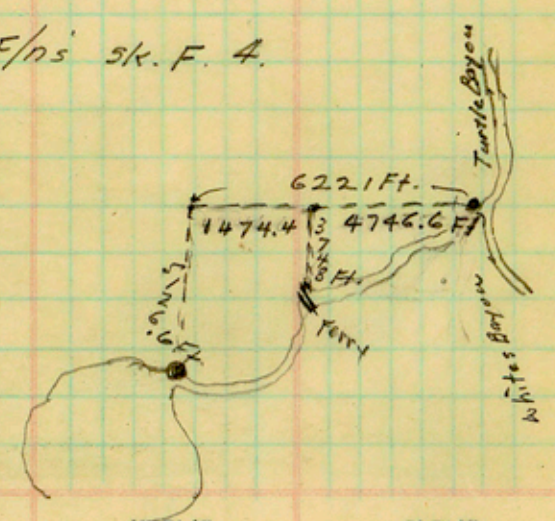
Counter 17532

Handwritten survey notes in columns, including bearings and distances. The text is mirrored across the page.

Handwritten survey notes in columns, including bearings and distances. The text is mirrored across the page.



F/ni sk. F. 4.



Chambers Co. Sk. File #4-B

STY COURSE DISTANCE COB BINE H S E W D. M. D. A. D. S. A. D. S.

SURVEYED BY _____ DATE _____ CALCULATED BY _____ DATE _____
 SKANLEE _____ SUB NO _____ BK _____ COUNTY _____ STATE _____
 counter 41472