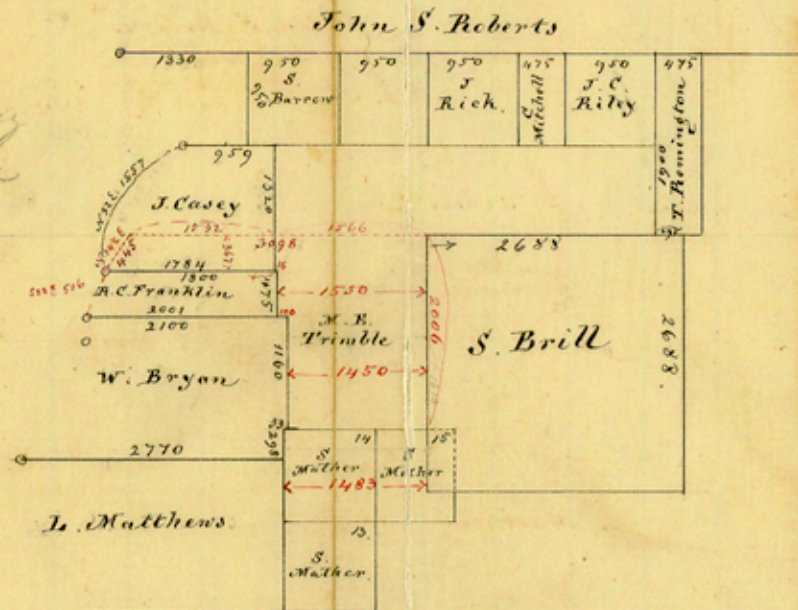


Chambers Co.
between Trinity B. & East Bay.
2000 vs. To The inch

File 8

for connection of the
S. Brill survey with the
T. Toly N. W. cor. see
field notes of Vance's survey
Sketch file No. 10 and the
original field notes of
the J. Carey survey
files 2-123.



File 8.

Chambers Co

February 25th 1868
Date of file.

East of the Trinity
Bay.

Counter 17545

①