

No. 11
Chambers Co.
T & N O R R Co. Survey
Nos. 21 - Nos. 86 incl.
N. E. corner of the County.

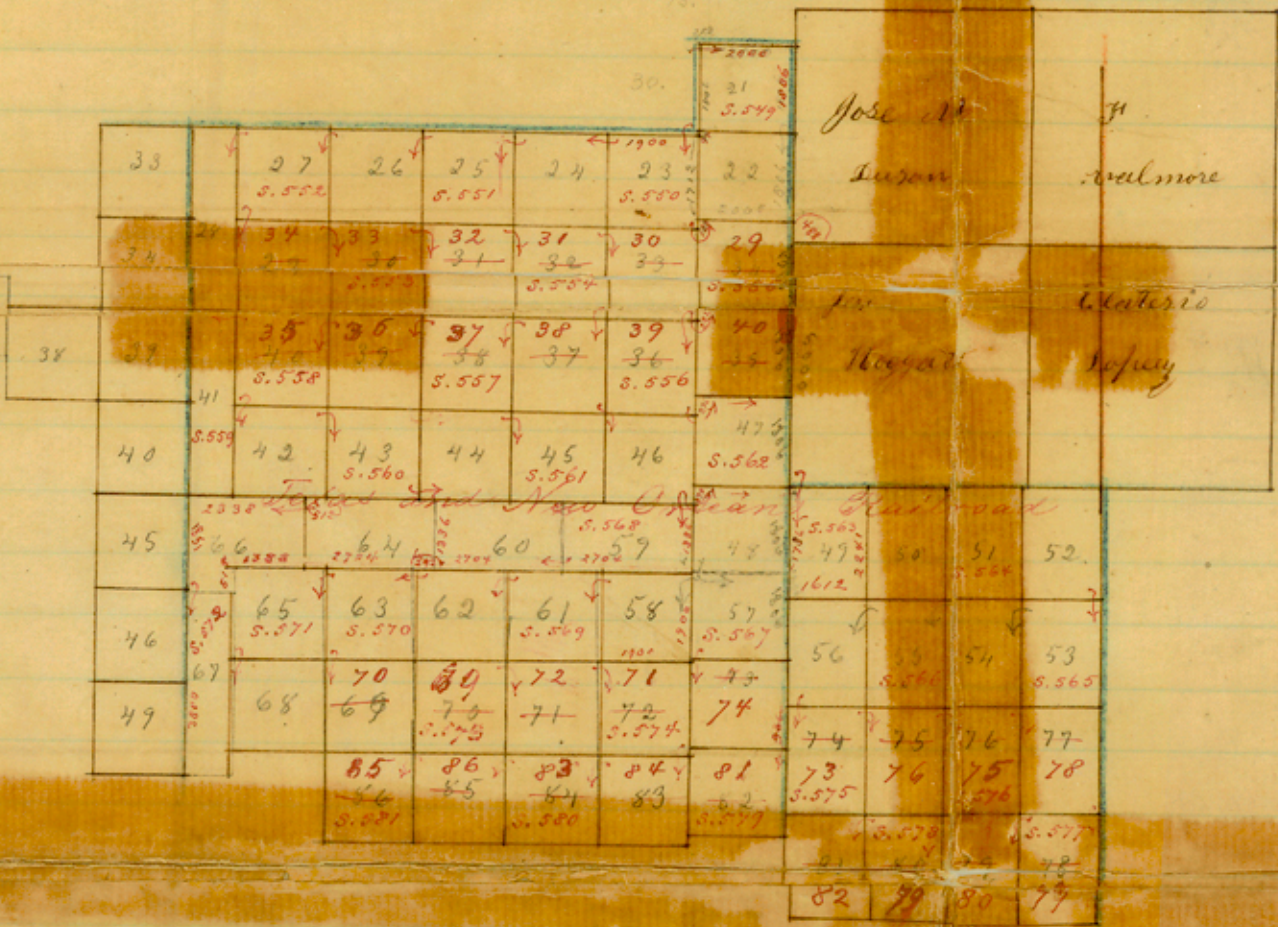
Sketch

Let us see what

County 17554
Filed July 23, 187
L. G. Co. Nelson
Super

10'

Turvey Sumners changed in Office
 Aug. 14/43. W. Broetje



Scale 4000 vs to an inch resolution 9° 15" E

11

To