

AUSTIN  
OCT 17  
9-AM

*W. W. [unclear]*

Received in General Land Office

OCT 18 1901

Includes  
Amt. Inclosed

Counter 17571

*[Handwritten signature]*

*J. Keith  
& 18 B  
Chamber  
You R*

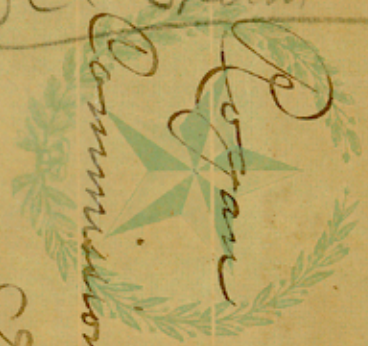


*10/21/1901*

*Ans'd 10/25/1901*

*See Sketch*

*See Sketch File 18*



*Commissioner Kern. Found [unclear]*

*Austin  
Texas*



18

18

**GEO. H. GIDDINGS**  
 COUNTY  
 SURVEYOR  
 Wallisville, Texas

292  
 THE STATE OF  
 TEXAS,

169  
 CHAMBERS  
 COUNTY.



Vol. 655

Wallisville, Texas, Oct 15<sup>th</sup> 1901

Chas Rogan  
 Commissioner  
 Austin

reply  
 Dear Sir

I enclose a plan showing the C.C.P. Welch League as it now stands by Decree of Court a copy of which I presume you have on file

The question I ask you to decide is does the Decree in establishing the N. line of the League 986 V further up the river pull the South line with it or does the South line still hold to the Griffith's. It is true the West line of the Welch running S 30° E calls for the N. line of Griffith, but I do not think it ever closed on the Griffith. The place where it is supposed to intersect the Griffith is an unmarked prairie line. The Army Griffith Lg. in the Original Notes calls to begin on Old River "Below & adjoining a Quarter League Survey now vacant" and I believe from all indications

Counter 17572

16  
THE STATE OF TEXAS,

GEO. H. GIDDINGS  
COUNTY  
SURVEYOR  
Wallisville, Texas

CHAMBERS  
COUNTY.



Wallisville, Texas,

190

that there was originally a Quarter League between Griffith + Welch. The Meanders of Old River are given in the Original notes of Welch and they give 4009 Acres for the width of the Welch agreeing with the west line. They close on the "Double Ash" the n.e. cor of the Welch but do not fit the ground.

There is a thousand acres of surplus in the Welch as it now holds and I have application to survey <sup>the 1000 acres</sup> it, as a vacancy, but would like to know if the department will recognize the vacancy before incurring the expense of a survey. If you recognize the vacancy please send me blanks for application under the law

Very Truly Yours  
Geo. H. Giddings

Received In General Land Office

OCT 18 1901

Inclosure

Map

10/25/01  
CWC

Counter 17573

Sketch N=18. (B)

Chambers Co.  
Sketch files

---

10/25/1901

---

See Sketch no-18  
#1.25 (D)

Received of General Fund Office

OCT 23 1901

Countdown 19574

Austin Texas Oct. 25/01.

Mr. Geo H. Giddings

Co. Sur. Chambers Co.

Wallisville, Texas

Dear Sir:

Your favor of the 15<sup>th</sup> inst. with sketch recd. Asking for an opinion as to the probability of the B. B. P. Welch League adding to the Griffith line.

In reply would state it is very clear in my mind that when the Griffith was surveyed there was a  $\frac{1}{4}$  league of vacant land between what is now the Welch League and said Griffith.

The Griffith was made by Barlet Sims, while the Welch was made by Thomas.

From the lights before me, it would be impossible to give an opinion in the matter.

The Decree of court simply established the N. E. corner, North & West boundary line of the N. W. or upper  $\frac{1}{2}$  of said Welch one league.

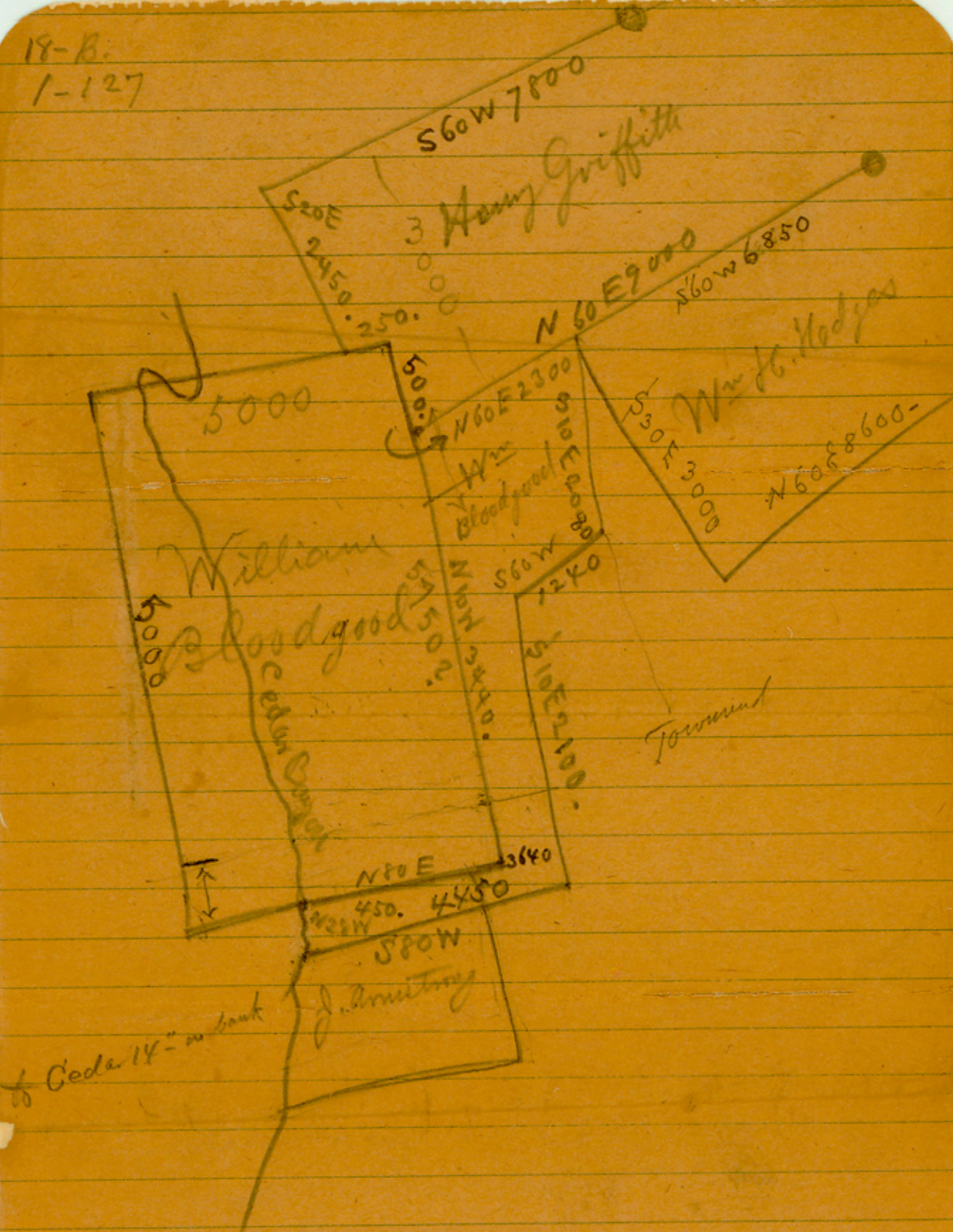
Whenever the County Surveym of Chambers Co. returns a full explanation of his work on the ground, then this office can act -

Should the land be vacant, it could only be acquired by actual settlement, or as additional land.

Yours &amp; c

Sent him blank &amp; c

18-B.  
1-127



18-B

This cor was established by proof in court as the original N.E. cor of Welch League

6510 V.  
S 60° W. DEETER Line

6510 V.  
S 60° W.

C.C.P. WELCH

Old

River

no original cor could be found

Sec # 2  
T 71 N  
R 10 W

Sec # 1  
T 71 N  
R 10 W

N 60° E 5750 V.

1000. Acres  
Vacancy claimed

5750 V. Prairie

Henry Griffith League

Timber

N. 160 E.

Counter 17577

nm