

MF 4342

State of Texas,
County Of Chambers,

Field Notes of a survey of 1000.0 Acres of Submerged land, made for H.N. Atkinson by virtue of his Mineral File #282, Filed with the County Surveyor of Chambers County on the 26th day of Feby. 1919 at 6:0 P.M. and recorded in Volume 'I' Page 89 on the same date.

Situated in Chambers County Texas about 25 Miles Course S.W. from Anahuac, in the Waters of Trinity Bay and more particularly described and bounded as follows.

Beginning at the S.E. Corner of a mineral File Survey # 184 of 1000.0 acres, made for Geo. Burns and Sarah Conwell; Said place of beginning being 1966.3 Varas South of the S.W. Corner of the W.D. Smith Survey and the S.E. Corner of the John James Survey.

Thence with the South line of the Said Mineral File # 184 the following Courses and distances.

S. 65-34' W. 1620.4 varas.
S. 68-18' W. 330.8 varas.
S. 82-46' W. 461.6 varas.
N. 79-52' W. 399.2 varas
S. 89-24' W. 240.1 varas.
N. 80-20' W. 487.0 varas.
N. 81-15' W. 815.4 varas.
N. 74-05' W. 344.5 varas.
N. 62-15' W. 144.0 varas. to tye N.W.

Corner of this Survey, and is also the S.W. Corner of the aforesaid Mineral File 184.0, same being in the East Line of the P.L. Buvens M.F. # 50 :-

Thence with the East line of the Buvens Survey and to the Wm Davies M.F. # 178.0, South 1222.3 varas to the S.W. Corner of this Survey, in the East line of the said Mineral File # 178.

Thence with Parallel Lines, with the South line of Mineral File # 184, the following courses and distances.

S. 62-15' E. 144.0 Varas.
S. 74-05' E. 344.5 varas.
S. 81-15' E. 815.4 varas.
S. 80-20' E. 478.0 varas 487.0? per sk.
N. 89-24' E. 240.1 varas.
S. 79-52' E. 399.2 varas.
N. 82-46' E. 461.6 varas.
N. 68-18' E. 330.8 varas.
N. 65-34' E. 1620.4 varas for the S.E. Corner.

of this Survey:- Thence North 1222.3 varas to the Place of beginning, enclosing within said Boundaries 1000.0 acres of submerged land.

March 26th 1919

Field Notes Compiled from a survey, made on the ground on April 8th to 12th 1917 ...

R. Jenkins. 0
R. Kendall. 1 C.C.

Orville Work

County Surveyor
Chambers County Texas .

I- Orville Work, County Surveyor of Chambers County hereby certify that the foregoing survey was actually made by me, on the ground on the date, according to law, and with the Chain Carriers above mentioned, duly qualified and that the lines, Boundaries and land marks, whether natural or artificial, described and set forth in the foregoing are correct/.

And that same was filed for record in my office on this the 26th day of March 1919 at 3:0 P.M. and recorded in Volume 'I' Page 89 on the same date.

Orville Work

County Surveyor
Chambers County, Texas.

State of Texas
County of Chambers

Field Notes of a survey of 1000.0 Acres of submerged land, made for H.W. Atkinson by virtue of his Mineral Title #282, filed with the County Surveyor of Chambers County on the 26th day of July, 1911. at 6:0 P.M. and recorded in Volume 'I', Page 99 on the same date. Situated in Chambers County Texas about 2 1/2 miles Course S.W. from Anahuac, in the Waters of Trinity Bay and more particularly described and bounded as follows.

Beginning at the S.E. Corner of a mineral title Survey # 184 of 1000.0 acres, made for Geo. Burns and Sarah Conwell; said place of beginning being 1986.3 Varas South of the S.W. Corner of the W.D. Smith Survey and the S.E. Corner of the 18th Range Survey.

Thence with the South line of the said Mineral the following courses and distances:
S. 62-34' W. 144.0 Varas.
S. 88-18' W. 330.8 Varas.
S. 82-46' W. 401.0 Varas.
N. 79-22' W. 399.2 Varas.
S. 89-24' W. 240.1 Varas.
E. 80-20' W. 487.0 Varas.
N. 81-12' W. 812.4 Varas.
N. 74-02' W. 344.2 Varas.
N. 62-12' W. 144.0 Varas. to the N.W. Corner of the Survey, and also the S.W. Corner of the aforesaid Mineral Title # 184, same being in the East line of the P.L. Buena M.T. # 50 :-

Thence with the East line of the Buena Survey and the East line of the said Mineral Title # 184, the following courses and distances:
S. 62-12' E. 144.0 Varas.
S. 74-02' E. 344.2 Varas.
S. 81-12' E. 812.4 Varas.
S. 80-20' E. 487.0 Varas.
N. 89-24' E. 240.1 Varas.
S. 79-22' E. 399.2 Varas.
N. 82-46' E. 401.0 Varas.
N. 68-18' E. 330.8 Varas.
N. 62-34' E. 144.0 Varas for the S.E. Corner.

Thence North 1222.3 Varas to the Place of beginning, enclosing within said boundaries 1000.0 acres of submerged land.

Field Notes Compiled from a survey made on the ground on April 8th to 15th 1917 ...
March 26th 1919

R. Jenkins. O.
R. Kendall. I. C.C.

Chambers County Texas.
County Surveyor

RECEIVED AS SPATIAL
MAY 20 1919

GEO. W. BEAVER
Recorder

9/6-1-7-19
Quicker

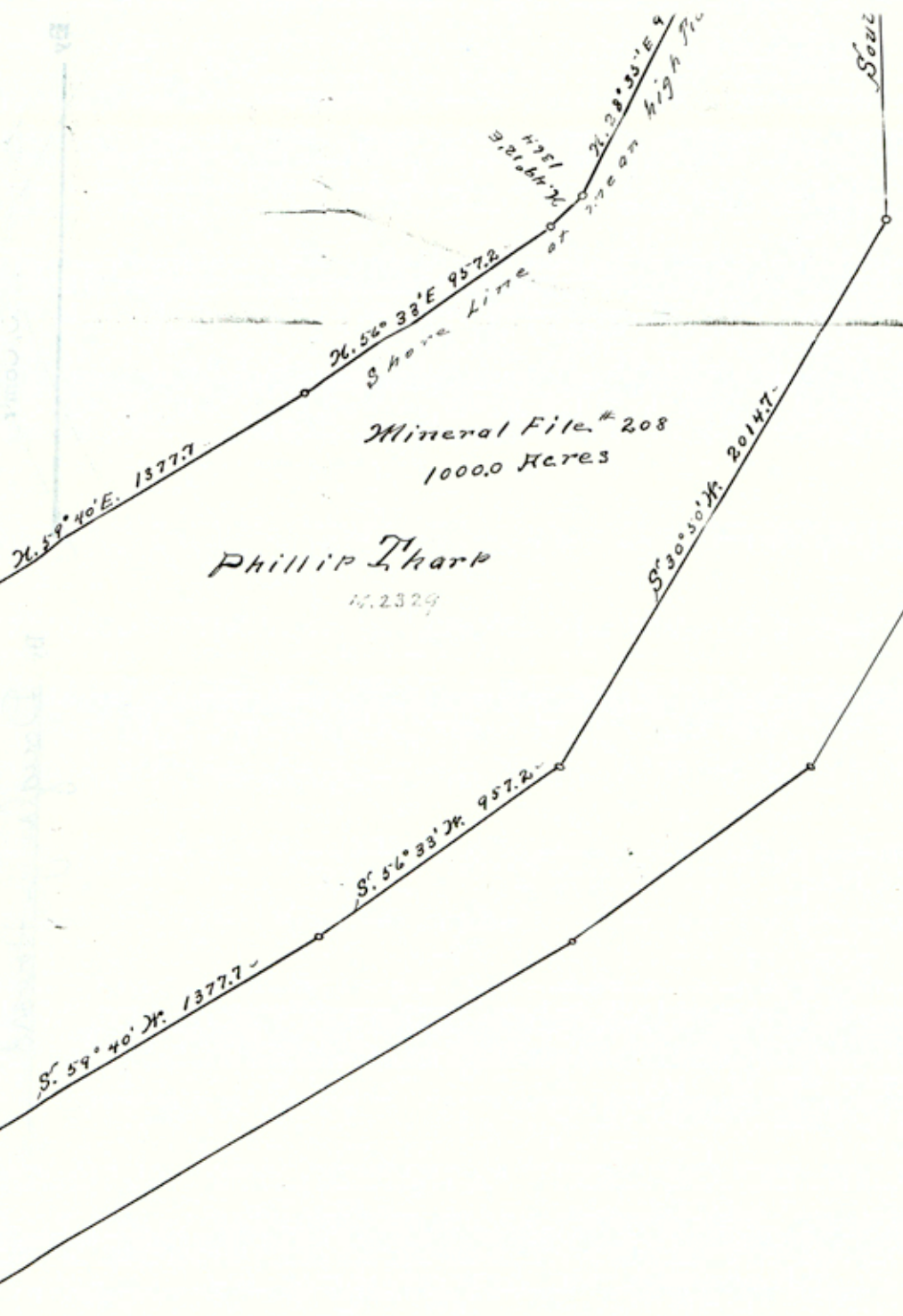
Field notes
Filed Mar 19-1919
P. S. [unclear]
By me
[unclear]

~~File No. _____
County _____
Filed _____ 19 _____
By _____, Com'r~~

File No. 50-1
Chambers County
Copy of FN & SK. fr. MF-2329, Trinity Bay
Filed June 23 19 83
GARRY MAURO, Com'r
By Douglas J. Howard

John
Isams

North 17300 vs.



Scale 400.00 =
1 inch

PLAN
OF

a survey of 1000 Acres of sub-merged land made for Phillip Tharp by virtue of his Mineral file, filed in my office on the 12th day of June 1917, M.F. # 208. Surveyed June 11th 1917

Orville Stark
County Surveyor
Chambers County, Tex.
MF 2329

MF 2329 Beard

Fisher

3

M.D. Smith
Survey

1891-02-25
M.D. Smith
Survey

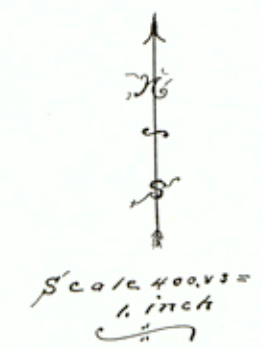
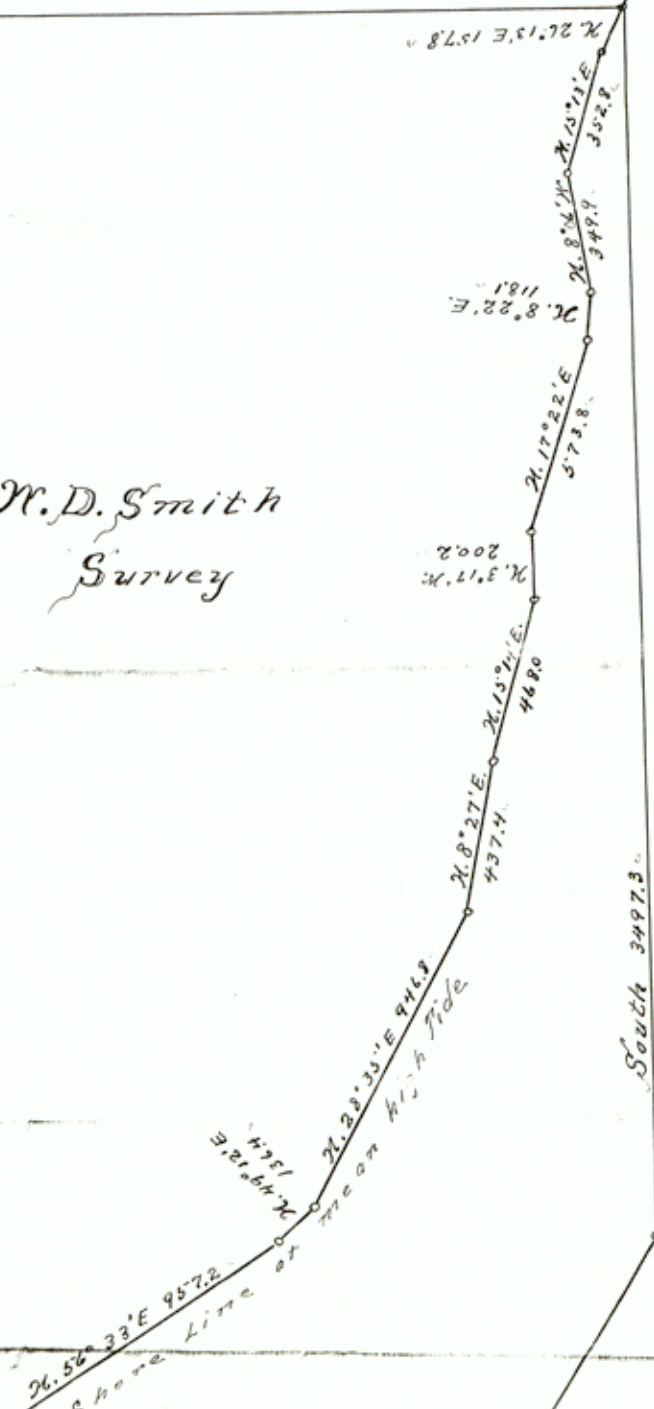


PLATE
of
COUNT 18065

A SURVEY OF THE ...

MF 2329

variation 8 deg. 45' East.

State of Texas
County of Chambers

Field notes of a survey of 1000.0 acres of submerged land made for Philip Tharp by virtue of his Mineral file # 208 filed with the surveyor of Chambers County on June 12, 1917, and described as follows:-

Situated in Chambers County in the waters of Trinity Bay about 22 miles Course S. W. from Anahuac and more particularly described as follows:

Beginning at a stake the same being the S. W. Corner of the W. D. Smith Survey-- Thence following the Shore line of said Smith survey at the mean high tide line the following courses and distances:

- N. 59-40' E 1377.7 varas;
- N. 56-33' E 957.2 varas;
- N. 49-12' E 136.4 varas;
- N. 28-35' E 946.8 varas;
- N. 8-27' E 437.4 varas;
- N. 15-14' E 468.0 varas;
- N. 3-17' W 200.2 varas;
- N. 17-22' E. 573.8 varas;
- N. 8-22' E 118.1 varas;
- N. 8-06' W 349.9 varas;
- N. 15 -13'E 352.8 varas;
- N. 26- 13'E 157.8 varas a stake same being the N. E.

Corner of the Smith Survey.- Thence South 3497.3 varas in the Waters of Trinity Bay,- Thence S. 30-50' W. 2014.7 varas.- S. 56-33' W. 957.2 varas.- S. 59-40' W. 1377.7 varas to a point south of the S. W. Corner of said Smith survey.- Thence north 1730.0 varas to the place of beginning, enclosing within said boundaries 1000 acres of submerged land.

Surveyed 16 day of June, 1917.

R. Jenkins and R. Kendall chain Carriers.

Orville Work
County Surveyor Chambers Co. Texas.

I, Orville Work, County Surveyor of Chambers County, Texas, hereby certify that the foregoing survey was actually made by me, on the ground, on the date, and according to law; and with the above mentioned chain carriers duly qualified. And that the lines, boundaries and land marks whether natural or artificial, described in the foregoing are correct.

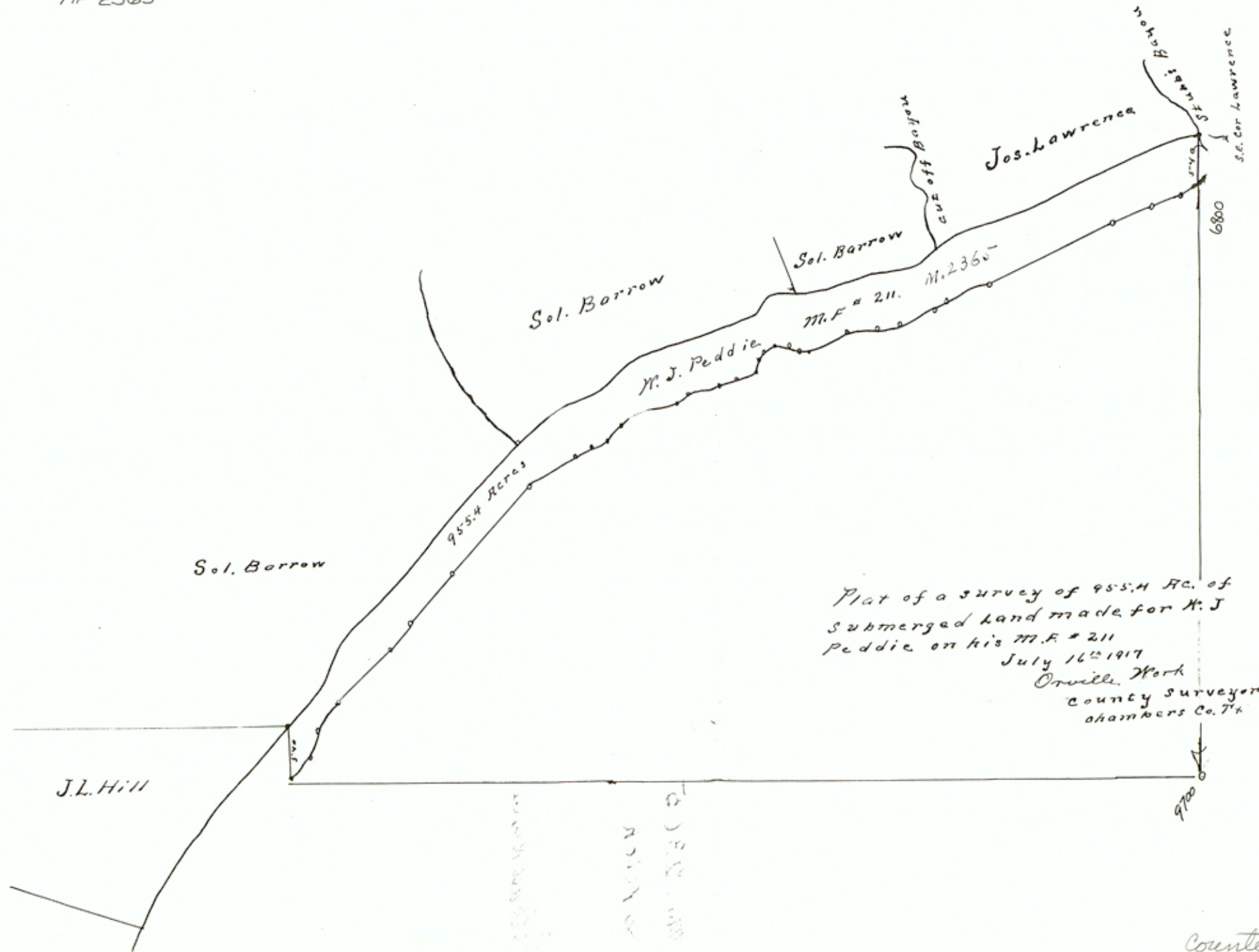
Orville Work
County Surveyor Chambers Co. Texas.

Filed for record in my office on this the 16 day of June A. D. 1917, at 4 o'clock P.M. and recorded in Volume 36 page 444 on the same date.

Orville Work
County Surveyor Chambers Co. Texas.

MF 2365

H



Plat of a survey of 955.4 Ac. of
 submerged land made for M. J
 Peddie on his M.F. # 211
 July 16th 1917
 Orville Work
 county surveyor
 Chambers Co. Tex

Counter 18062

MF 2365

N

State of Texas.
County of Chambers.

Field notes of a survey of 955.4 acres of submerged land made for W. Peddie, by virtue of his power as Surveyor of Chambers County on the 19th Day of June 1917, and recorded in volume H. page 447 on the same date, situated in Chambers County about 12 miles course S.W from Manuac, in the waters of Trinity Bay, and described as follows,

Beginning at the S.W. Corner of the Most South western Col Barrow Survey at the Mean high tide line, thence with the said mean high tide line the following courses and distances, -N. 9 deg, East 568.0 Varas, -N. 5 deg, West 186.0 Varas, -N. 2-15'E. 401.0 varas, -N. 1-15'E. 859.0 varas, -N. 1-15'E. 227.0 varas, -N. 4-5'E. 887.0 varas, -N. 58-15'E. 635.0 varas, -N. 40-55'E. 37.0 Vras, -N. 7 deg, East, 252.0 varas, N, 9-20' . 468.0 varas, -N. 60-55'E. 484.0 Varas, -N. 55-20'E. 77.0 Varas, -N. 70-30'E. 468.0 Varas, -N. 6-50'E. 112.0 Varas, -N. 38-30'E. 30.0 aras, -N. 55 deg, East 401.0 Varas, -N. 6-55'E. 180.0 Varas, -N. 48-30'E. 118.0 Varas, -N. 78-15'E. 161.0 Varas, -S. 55 deg, East 49.0 Varas, -N. 79-50'E. 193.0 Varas, -N. 69-10'E. 132.0 Varas, -N. 54-35'E. 189.0 Varas, -N. 38-30'E. 30.0 Vaas, -N. 69-15'E. 543.0 Varas, -N. 16-30'E. 60.0 Varas, -a stake for the S.W. Corner of the Joseph Lawrence Survey, Thence N. 80 deg East, 190.0 Varas, -N. 70-0'E. 650.0 Vaas, N, 64 deg East, 150.0 Varas, -N. 49 deg, East 400.0 Varas, -N. 76 deg East 190.0 Varas, -N. 63 deg East, 283.0 Varas, a stake at the Mouth of Tubbs Bayou, same being the S.E. Corner of the Joseph Lawrence Survey, Thence south into the waters of Trinity Bay 540.0 Varas a point for the S.W. South East corner of this survey, - thence with parallel lines to the Bay shore the following courses and distances, - S. 84-deg, West 283.0 varas, -S. 76 deg, West 120.0 varas, -S. 63 deg East, 100.0 Varas, -N. 64 deg West 1530.0 Varas, -S. 76-19'W. 650.0 Varas, -S. 80 deg, West 190.0 Varas, -S. 16-30'W. 60.0 Varas, -S. 89-5'W. 543.0 Varas, -N. 88-30'W. 88.0 varas, -S. 34-35'W. 189.0 Varas, -S. 69-10'W. 192.0 Varas, -N. 70-50'W. 193.0 Vras, -N. 55 deg West 49.0 Varas, -S. 78-15'W. 161.0 Varas, -S. 48-30'W. 118.0 varas, -S. 6-5'W. 180.0 Varas, -S. 55 deg East 55.0 Vs, -N. 88-10'W. 30.0 Vras, -S. 46-50'W. 112.0 varas, -N. 70-30'W. 468.0 Vras, -S. 54-20'W. 77.0 Varas, -S. 69-55'W. 184.0 Varas, -S. 70-0'W. 650.0 Varas, -N. 67 deg, West 252.0 Varas, -S. 30-55'W. 37.0 Varas, -S. 58-15'W. 635.0 varas, -S. 44-5'W. 887.0 Varas, -S. 41-30'W. 1117.0 varas, -S. 48-15'W. 401.0 varas, -S. 55-15'W. 401.0 Varas, -N. 5 deg, East 186.0 Varas, -N. 49 deg, West, 568.0 Varas, -For the South West corner of this survey Thence North 540.0 Varas to the place of beginning, making in all 955.4 acres of submerged land.

Author Graham and Freeman Lath, Chain Carriers.

Surveyed on the ground on May the 18th to 20th 1917 and field notes used for compiling the above survey on this the 16th day of July 1917.

Coville Work
County Surveyor Chambers County Texas,

Coville Work County Surveyor of Chambers County Texas hereby certify that the foregoing survey was actually made by me on the ground, on the date, according to law and with the chain carriers above mentioned duly qualified, and that the lines, boundaries and land marks whether natural or artificial, described and set forth in the foregoing are correct,.

Coville Work
County Surveyor. Chambers County Texas,

Filed for record in my office on this the 16th, day of July 1917, and recorded in Volume H. Page 455 on the same date.

Coville Work
County Surveyor Chambers County Texas,

File No. 50-3

Cor. Chambers County
Copy of FN fr. ME-2402 Trinity Bay

Filed June 23 19 83

GARRY MAURO, Com'r
By Douglas J. Howard

6 ME 2402

Corrected Field Notes

Filed Dec. 27-1917

R. Johnson

Commissioner

James W. Whitfield

Correct on map for

15.2 acres.

12-27-17

J. W. V.

MF 2402

S. 43-15'W. 1059.0 varas.

S. 42-15'W. 401.0 varas.

S. 5-00'E. 186.0 varas.

S. 49-00'W. 568.0 varas.

for the S.W. Corner of this Survey: -Tehnce North 432.0 varas to the place of Beginning, making in all 764.4 acres of submerged land.

Surveyed on the ground May 18th to 20th. 1917
and corrected December 1st. 1917.Luther Graham. }
Freeman Spaths. } C.C.*Orville Work*
County Surveyor
Chambers County, Texas

I, Orville Work, County Surveyor of Chambers County; hereby certify that the foregoing survey was actually made by me on the ground, on the date according to law, and with the chain carriers above mentioned, duly qualified; and that the lines boundaries and land marks whether natural or artificial, described and set forth in the foregoing are correct. And that same were filed for record in my office on this the 1st day of December 1917 and recorded in Volume 'I' Page 28 and 29 on the same date

Orville Work

County Surveyor
Chambers County Texas.

6

MF 2402

State of Texas
County of Chambers;

Corrected field notes of a survey of 764.4 Acres of Submerged land made for E.R. Mathews by virtue of his Mineral File #204 filed with the County Surveyor of Chambers County Texas, on the 9th Day of June 1917 and Recorded in Volume 'H' Page 439 on the same date.

Situated in Chambers County, About 12 miles Course S.W. From the County Seat (Anahuac) in the waters of Trinity Bay, and more particularly described as follows, to-wit:-

Beginning at a point in the bay 540.0 varas South of the S.E. Corner of the most Western Sol Barrow Survey; Thence with parallel lines to the Bay Shore the following Courses and distances.

- N. 49-00'E. 568.0 varas.
- N. 5-00'W. 186.0 varas.
- N. 42-15'E. 401.0 varas.
- N. 43-15'E. 1059.0 varas.
- N. 41-30'E. 1117.0 varas.
- N. 44-05'E. 887.0 varas.
- N. 58-15'E. 635.0 varas.
- N. 30-55'E. 87.0 varas.
- N. 67-00'E. 252.0 varas.
- N. 49-30'E. 288.0 varas.
- N. 69-55'E. 484.0 varas.
- N. 53-20'E. 77.0 varas.
- N. 70-30'E. 468.0 varas.
- N. 46-50'E. 112.0 varas.
- S. 88-30'E. 180.0 varas.
- N. 55-00'E. 1550.0 varas.
- N. 64-25'E. 180.0 varas.
- N. 48-30'E. 118.0 varas.
- N. 78-25'E. 161.0 varas.
- S. 55-00'E. 49.0 varas.
- N. 79-50'E. 193.0 varas.
- N. 69-10'E. 432.0 varas.
- N. 54-35'E. 189.0 varas.
- S. 88-30'E. 88.0 varas.
- N. 69-45'E. 543.0 varas.
- N. 16-30'E. 60.0 varas.
- N. 80-00'E. 190.0 varas.
- N. 70-30'E. 650.0 varas.
- N. 64-00'E. 1530.0 varas.
- N. 49-00'E. 400.0 varas.
- N. 67-00'E. 320.0 varas.
- N. 63-00'E. 283.0 varas.

a point in the Bay 540.0 varas South of the mouth of Stubb's Bayou, Said Bayou being the S.E. Corner of the Joseph Lawrence Survey; Thence South in the Waters of the bay 432.0 varas for the S.E. Corner of this Survey; Thence with a parallel line to the Bay shore the following courses and distances.

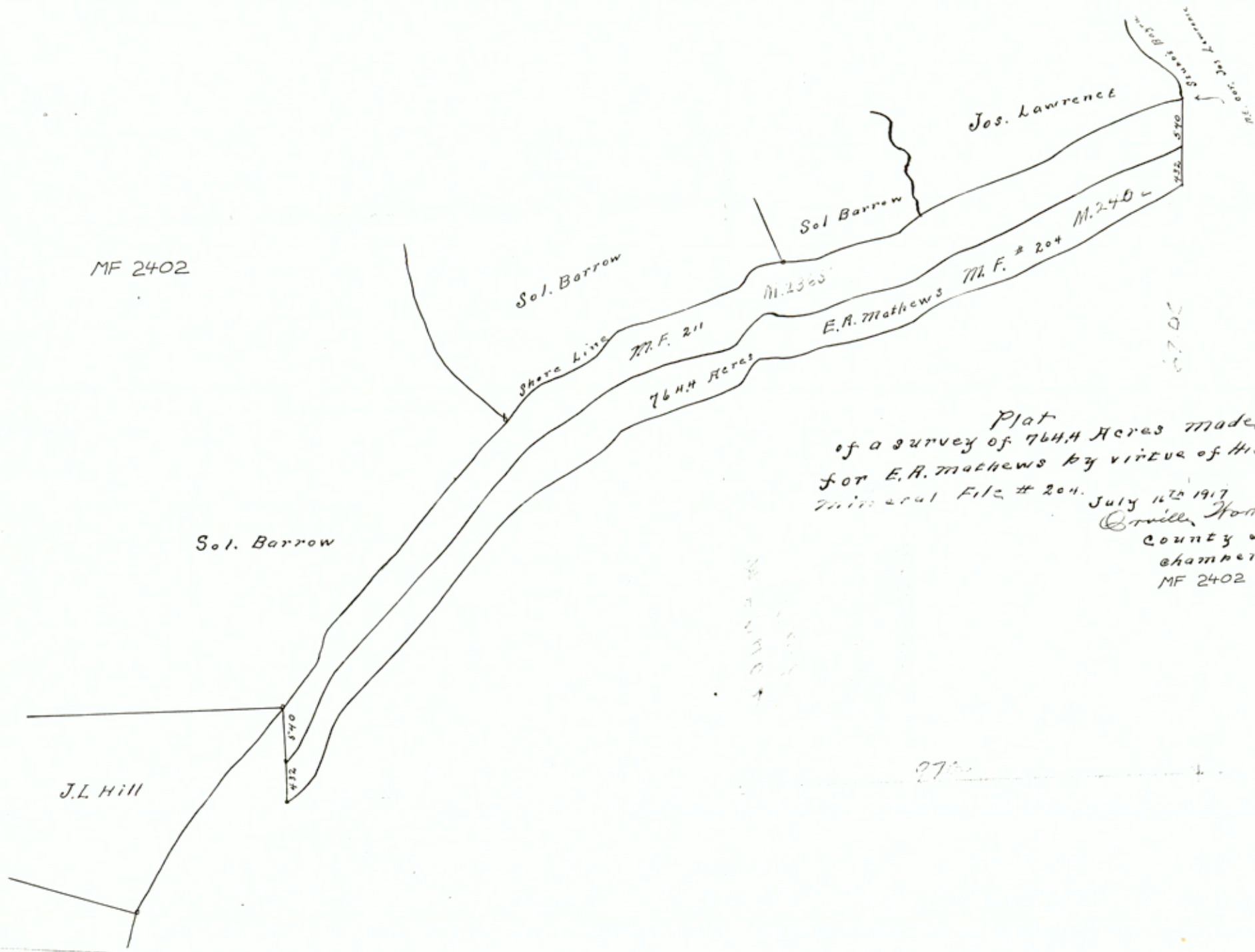
- S. 63-00'W. 283.0 varas.
- S. 76-00'W. 320.0 varas.
- S. 49-00'W. 400.0 varas.
- S. 64-00'W. 1530.0 varas.
- S. 70-30'W. 650.0 varas.
- S. 80-00'W. 190.0 varas.
- S. 16-30'W. 60.0 varas.
- S. 69-45'W. 543.0 varas.
- N. 88-30'W. 88.0 varas.
- S. 54-35'W. 189.0 varas.
- S. 69-10'W. 432.0 varas.
- S. 79-50'W. 193.0 varas.
- N. 55-00'W. 49.0 varas.
- S. 78-25'W. 161.0 varas.
- S. 48-30'W. 118.0 varas.
- S. 64-25'W. 180.0 varas.
- S. 55-00'W. 155.0 varas.
- S. 88-30'W. 180.0 varas.
- S. 46-50'W. 112.0 varas.
- S. 70-30'W. 468.0 varas.
- S. 53-20'W. 77.0 varas.
- S. 69-55'W. 484.0 varas.
- S. 49-30'W. 288.0 varas.
- S. 67-00'W. 252.0 varas.
- S. 30-55'W. 87.0 varas.
- S. 58-15'W. 635.0 varas.
- S. 44-05'W. 887.0 varas.
- S. 41-30'W. 1117.0 varas.

12-22-17-2017



1
2
3
4
5
6
7
8
9
10
11
12
13
14
15
16
17
18
19
20
21
22
23
24
25
26
27
28
29
30
31
32
33
34
35
36
37
38
39
40
41
42
43
44
45
46
47
48
49
50
51
52
53
54
55
56
57
58
59
60
61
62
63
64
65
66
67
68
69
70
71
72
73
74
75
76
77
78
79
80
81
82
83
84
85
86
87
88
89
90
91
92
93
94
95
96
97
98
99
100

Scale 1000
vs 20 inch



Plat
of a survey of 7644 Acres made
for E.A. Mathews by virtue of his
Mineral File # 204. July 11th 1917
Orville Holt
County Surveyor
Chambers Co. Tx.
MF 2402

Counter 18055

COUNTY SURVEYOR CHAMBERS COUNTY TEXAS

and recorded in volume n. p. 699 on the same date.

COUNTY SURVEYOR CHAMBERS COUNTY TEXAS

following the course.

marks whether named or unmentioned described and set forth in the
certificates duly indited, and that the lines, boundaries and land
on the same according to law and with the above mentioned
certify that the above survey was actually made by us on the county
of Dallas for the county surveyor of Chambers County Texas hereof.

COUNTY SURVEYOR CHAMBERS COUNTY TEXAS

MADE ON THIS THE Tenth DAY OF JULY 1917.

MADE AND THE SAME WERE MADE FOR THE PURPOSE OF THE ABOVE

MADE AND THE SAME WERE MADE FOR THE PURPOSE OF THE ABOVE

MADE AND THE SAME WERE MADE FOR THE PURPOSE OF THE ABOVE

MADE AND THE SAME WERE MADE FOR THE PURPOSE OF THE ABOVE

MADE AND THE SAME WERE MADE FOR THE PURPOSE OF THE ABOVE

MADE AND THE SAME WERE MADE FOR THE PURPOSE OF THE ABOVE

MADE AND THE SAME WERE MADE FOR THE PURPOSE OF THE ABOVE

MADE AND THE SAME WERE MADE FOR THE PURPOSE OF THE ABOVE

MADE AND THE SAME WERE MADE FOR THE PURPOSE OF THE ABOVE

MADE AND THE SAME WERE MADE FOR THE PURPOSE OF THE ABOVE

MADE AND THE SAME WERE MADE FOR THE PURPOSE OF THE ABOVE

MADE AND THE SAME WERE MADE FOR THE PURPOSE OF THE ABOVE

MADE AND THE SAME WERE MADE FOR THE PURPOSE OF THE ABOVE

MADE AND THE SAME WERE MADE FOR THE PURPOSE OF THE ABOVE

MADE AND THE SAME WERE MADE FOR THE PURPOSE OF THE ABOVE

MADE AND THE SAME WERE MADE FOR THE PURPOSE OF THE ABOVE

MADE AND THE SAME WERE MADE FOR THE PURPOSE OF THE ABOVE

MADE AND THE SAME WERE MADE FOR THE PURPOSE OF THE ABOVE

MADE AND THE SAME WERE MADE FOR THE PURPOSE OF THE ABOVE

MADE AND THE SAME WERE MADE FOR THE PURPOSE OF THE ABOVE

MADE AND THE SAME WERE MADE FOR THE PURPOSE OF THE ABOVE

MADE AND THE SAME WERE MADE FOR THE PURPOSE OF THE ABOVE

MADE AND THE SAME WERE MADE FOR THE PURPOSE OF THE ABOVE

MADE AND THE SAME WERE MADE FOR THE PURPOSE OF THE ABOVE

MADE AND THE SAME WERE MADE FOR THE PURPOSE OF THE ABOVE

MADE AND THE SAME WERE MADE FOR THE PURPOSE OF THE ABOVE

MADE AND THE SAME WERE MADE FOR THE PURPOSE OF THE ABOVE

MADE AND THE SAME WERE MADE FOR THE PURPOSE OF THE ABOVE

MADE AND THE SAME WERE MADE FOR THE PURPOSE OF THE ABOVE

MADE AND THE SAME WERE MADE FOR THE PURPOSE OF THE ABOVE

M.F. 2402

Field Notes

Lee Hawkins

John W. ...

...

...

...

...

...

...

Field notes - Error lat. 50 yrs. - (The 20th & 47th courses were intended to be parallel, but they are at 55° E 49 yrs & 55° N 49 yrs) 10-30-17

MF 2402

State of Texas)
County of Chambers)

Field notes of a survey of 764.4 acres of submerged land made for E.R. Mathews by virtue of his Mineral file #204 filed with the County Surveyor of Chambers County Texas on the 9th day of ~~June~~ 1917. and recorded in Volume H. Page 439. Said Filing and ~~Survey~~ Survey covering the same tract as a previous survey made for J.O. Wright May the 18 th, to 20th 1917. Said Wright tract not having been accepted by the Land office.

Situated in Chambers County about 12 miles Course N.W. From Anahuac, in the waters of Trinity Bay, and described as follows.- Beginning at a point in Trinity Bay 40.0 varas South of the most Southwestern ~~of~~ ~~Barrow~~ ~~Survey~~ Southwest corner:- Thence with parallel lines to the Bay shore at the Mean High tide line the following courses and distances N. 10 deg. East, 568.0 Varas, - N. 10 deg, West, 186.0 Varas, - N. 2-15' E. 01.0 Varas, - N. 1-15' E. 1059.0 Varas, - N. 1-0' E. 1117.0 varas, - N. 1-15' E. 807.0 Varas, - N. 58-15' E. 635.0 varas, - N 30-55' E. 87.0 Varas, - N. 67 Deg. East, 52.0 varas, - N. 29-10' East, 288.0 Varas, - N. 09-55' E. 82.0 Varas, - N. 53-20' E. 77.0 Varas, - N. 70-30' E. 468.0 Varas, - N. 6-50' E. 112.0 Varas, - N. 58-30' E. 180.0 varas, - N. 5 deg, East 55.0 varas, - N. 6-25' E. 180.0 varas, - N. 18-00' E. 18.0 Varas, - N. 78-25' E. 161.0 Varas, - S. 55 Deg. East, 49.0 Varas, - N. 79-00' E. 190.0 Varas. - N. 69-10' E. 402.0 Varas. - N. 74-35' E. 189.0 Varas, - N. 88-30' E. 88.0 Varas, - N. 80-15' E. 543.0 varas, - N. 16-30' E. 60.0 Varas, same being 540.0 varas south of the south West corner of the Joseph Lawrence ~~Survey~~ Survey, - Thence N. 60 deg, East, 190.0 Varas, - N. 70-30' E. 550.0 Varas, - N. 64 deg East, 1530.0 Varas, - N. 9-deg East, 400.0 Varas, - N. 76 deg, East, 220.0 varas, - N. 63-deg, East, 283.0 varas, - a point in Trinity Bay, 40.0 Varas, South of the Mouth of ~~Stubb's~~ Bayou, said Bayou being the South East corner of the Joseph Lawrence Survey, - Thence South in the Waters of the Bay 132.0 varas, a point for the S.W. corner of this survey; Thence with Parallel lines to the Bay shore the following courses and Distances S. 65-deg West, 333.0 varas, - S. 76 deg, West, 320.0 Varas, - S. 9 deg, West 400.0 Varas, - S. 34 deg West, 150.0 Varas, - S. 70-10' W. 50.0 Varas, - S. 60 deg, West, 190.0 varas, - S. 16-0' W. 60.0 Varas, - S. 9-15' W, 543.0 Varas, - N. 88-30' W. 80.0 Varas, - S. 54-35' W. 189.0 Varas, - S. 0-10' W. 132.0 Varas, - S. 0-50' W, 193.0 Varas, - S. 55-deg West, 49.0 Varas, - S. 78-25' W. 161.00 varas, - S. 48-30' W. 118.0 Varas, - S. 64-25' W. 130.0 Varas, - S. 55 deg West 155.0 Varas, - N. 8-30' W, 180.0 Varas, - S. 46-50' W, 112.0 varas, - S. 70-00' W. 108.0 Varas, - S. 53-20' W. 77.0 Varas, - S. 59-55' W. 82.0 varas, - S. 10-00' W. 208.0 varas, - S. 67 deg, west, 252.0 varas, - S. 0-55' W. 49.0 varas, - S. 58-15' West, 65.0 varas, - S. 4-5' West, 87.0 Varas, - S. 1-0' W. 1117.0 Varas, - S. 10-15' W. 1059.0. varas, - S. 2-15' W. 401.0 Varas, - S. 5 deg East, ~~186.0~~ 186.0 varas, - S. 10 deg West 568.0 Varas, - for the S.W. corner of this survey, - Thence North 132.0 varas to the place of beginning enclosing 764.4 Acres of submerged land.

Ruther Graham and Freeman Spaths Chain Carriers.

Surveyed on the ground on May the 18 th to the 20th 1917 for Geo. Wright, and the same field notes used for compiling the above survey on this the 16th day of July 1917.

Orville Work
County Surveyor Chambers County Texas,

I, Orville Work County Surveyor of Chambers County Texas Hereby Certify that the above survey was actually made by me on the ground, on the date, according to law and with the abovementioned Chain carriers duly qualified, and that the lines, boundaries and land marks whether natural or artificial described and set forth in the foregoing are correct.

Orville Work
County Surveyor Chambers County Texas,

Filed for record in my office on this the 16 th, day of July 1917 and recorded in volume H. Page 454 on the same date.

Orville Work
County Surveyor Chambers County Texas.

H.D. Smith
Survey

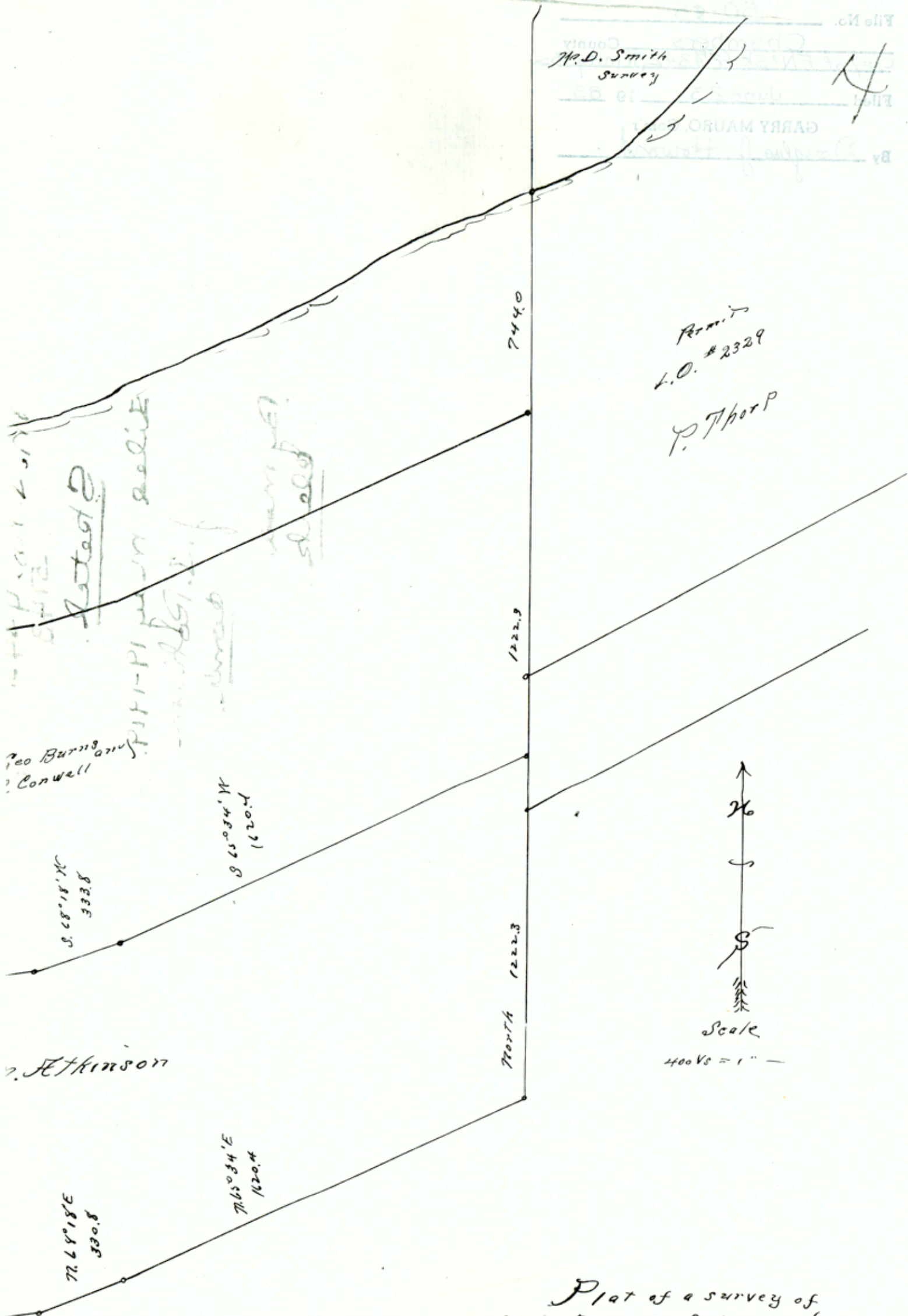
Remits
L.O. #2329

P. Thorp

Highway
State
Latah
PIT-PI
shaded

Geo Burnham
Conwell

H. Atkinson



Scale
400 Vs = 1" -

Plat of a survey of
10000 Acres of Submerged Land
made for H. H. Atkinson by virtue
of his Mineral File # 282, Filed with
the County Surveyor of Chambers County
on the 26th day of Feb'y 1919.

Orville Hook
County Surveyor
Chambers CoTx
Chambers Co. St. File #50

Counter 18052

John Ljams
Survey

Shore line

H. De Zavala
and
H. Ford
1000.0 Ac

W. F. #184
1000.0 Ac

Geo Burns
S. Conwell

M. F. #184
1000.0 Ac

H. W. Atkinson
1000.0 Ac

N. 81° 15' W
815.4

N. 80° 20' W
487.0

S. 89° 24' W
240.1

N. 79° 52' W
399.2

S. 82° 41' W
461.6

S. 68° 18' W
333.8

N. 65° 34' E
1620.4

M. F. #282
1000.0 Ac

H. W. Atkinson
1000.0 Ac

S. 81° 15' E
815.4

S. 80° 20' E
487.0

N. 89° 24' E
240.1

S. 79° 52' E
399.2

N. 82° 41' E
461.6

N. 68° 18' E
333.8

N. 65° 34' E
1620.4

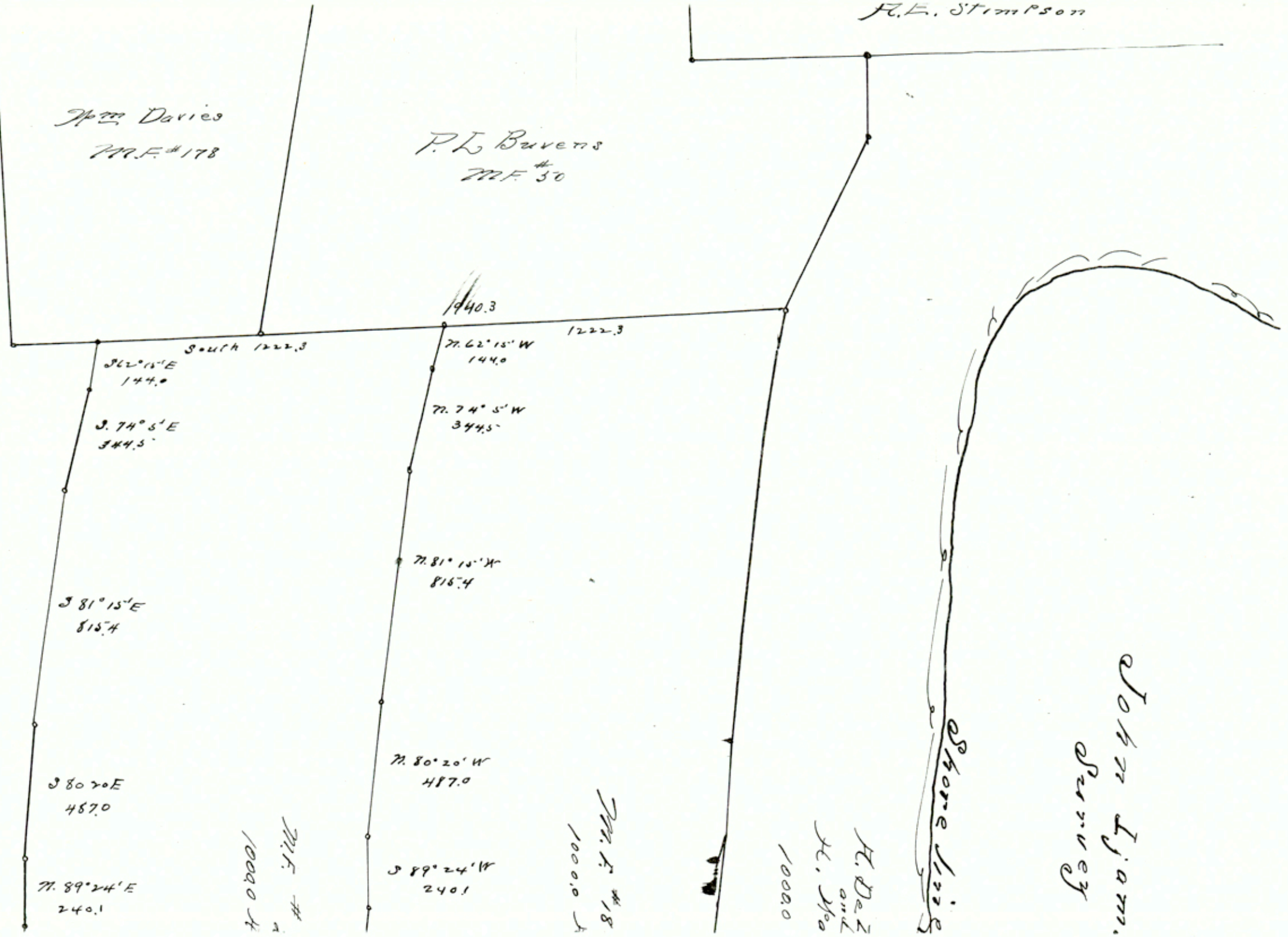
F. E. STIMPSON

Wm Davies
M.F. #178

P. L. BUVENS
M.F. #30

Number 18050

Chambers Co. S.E. File 750



SOUTH 1222.3

S 62° 15' E
144.0

S 74° 5' E
344.5

S 81° 15' E
815.4

S 80° 20' E
487.0

N 89° 24' E
240.1

M.F. #
10000.0

1440.3

77.62° 15' W
144.0

77.74° 5' W
344.5

77.81° 15' W
815.4

N 80° 20' W
487.0

S 89° 24' W
240.1

1222.3

M.F. #18
10000.0

H. DeZ
and
H. Ho
10000

Shore line

John Ljam.
Survey

File No. 50-2

Chambers County
Copy of FN & SK. fr. MF-2365, Trinity Bay

Filed June 23 19 83

GARRY MAURO, Com'r
By Douglas J. Howard

