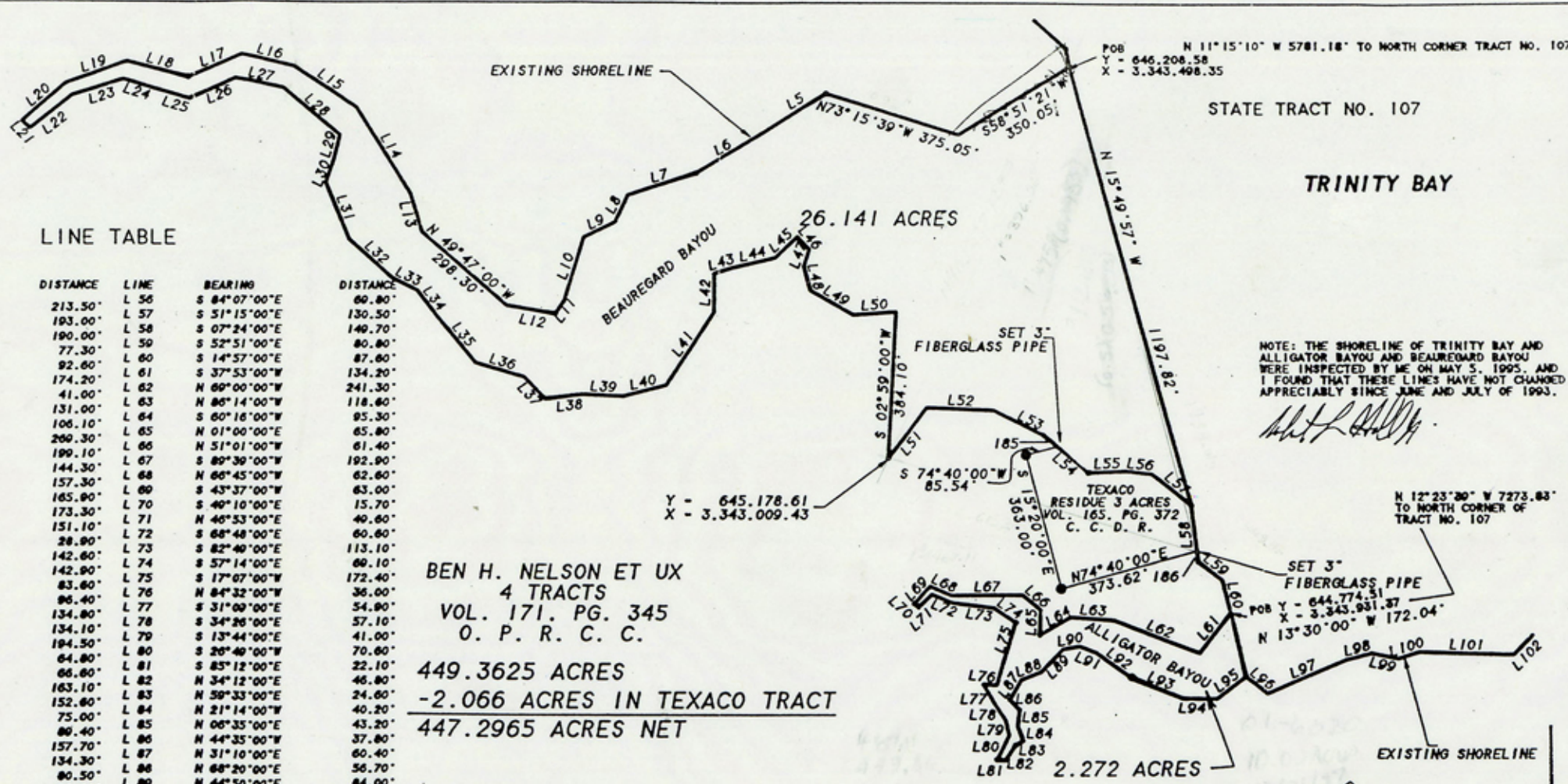


No. FILE No. Sketch File 58
 Survey - Beauregard & Alligator Bayous
 Filed Jan 2
 By GARRY MAURO, Com'r
 County
 19 98
 See SAM 20

EXHIBIT "A"



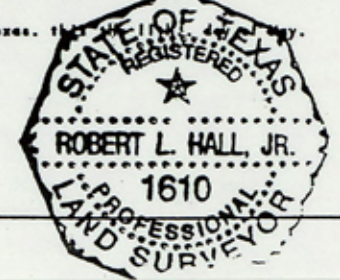
LINE TABLE

LINE	BEARING	DISTANCE	LINE	BEARING	DISTANCE
L 5	S 58°30'00"W	213.50'	L 56	S 84°07'00"E	60.80'
L 6	S 59°07'00"W	193.00'	L 57	S 51°15'00"E	130.50'
L 7	S 72°03'00"W	190.00'	L 58	S 07°24'00"E	140.70'
L 8	S 25°16'00"W	77.30'	L 59	S 52°51'00"E	80.80'
L 9	S 63°59'00"W	92.60'	L 60	S 14°57'00"E	87.60'
L 10	S 17°10'00"W	174.20'	L 61	S 37°53'00"W	134.20'
L 11	S 35°48'00"W	41.00'	L 62	N 09°00'00"W	241.30'
L 12	N 80°27'00"W	131.00'	L 63	N 86°14'00"W	118.60'
L 13	N 17°26'00"W	106.10'	L 64	S 60°16'00"W	95.30'
L 14	N 32°38'00"W	260.30'	L 65	N 01°00'00"E	65.80'
L 15	N 56°40'00"W	199.10'	L 66	N 51°01'00"W	61.40'
L 16	N 78°04'00"W	144.30'	L 67	S 89°39'00"W	192.90'
L 17	S 68°10'00"W	157.30'	L 68	N 66°45'00"W	62.60'
L 18	N 73°51'00"W	165.90'	L 69	S 43°37'00"W	63.00'
L 19	S 70°02'00"W	173.30'	L 70	S 40°10'00"E	15.70'
L 20	S 48°59'00"W	151.10'	L 71	N 46°53'00"E	40.60'
L 21	S 45°41'00"E	28.90'	L 72	S 68°48'00"E	60.60'
L 22	N 51°34'00"E	142.60'	L 73	S 82°40'00"E	113.10'
L 23	N 72°25'00"E	142.90'	L 74	S 57°14'00"E	60.10'
L 24	S 73°02'00"E	83.60'	L 75	S 17°07'00"W	172.40'
L 25	S 74°12'00"E	96.40'	L 76	N 84°32'00"W	36.00'
L 26	N 67°05'00"E	134.80'	L 77	S 31°09'00"E	54.90'
L 27	S 79°10'00"E	134.10'	L 78	S 34°26'00"E	57.10'
L 28	S 50°27'00"E	194.50'	L 79	S 13°44'00"E	41.00'
L 29	S 14°05'00"W	64.80'	L 80	S 26°40'00"W	70.60'
L 30	S 18°54'00"W	66.60'	L 81	S 85°12'00"E	22.10'
L 31	S 23°15'00"E	163.10'	L 82	N 34°12'00"E	46.80'
L 32	S 46°30'00"E	152.60'	L 83	N 59°33'00"E	24.60'
L 33	S 64°27'00"E	75.00'	L 84	N 21°14'00"W	40.20'
L 34	S 39°08'00"E	80.40'	L 85	N 06°35'00"E	43.20'
L 35	S 40°22'00"E	157.70'	L 86	N 44°35'00"W	37.80'
L 36	S 74°08'00"E	134.30'	L 87	N 31°10'00"E	60.40'
L 37	S 44°45'00"E	80.50'	L 88	N 68°20'00"E	56.70'
L 38	N 82°52'00"E	98.00'	L 89	N 44°50'00"E	84.00'
L 39	S 87°14'00"E	111.60'	L 90	N 78°30'00"E	45.30'
L 40	N 75°38'00"E	116.00'	L 91	S 09°47'00"E	48.50'
L 41	N 33°24'00"W	229.90'	L 92	S 55°28'00"E	115.60'
L 42	N 00°01'00"W	101.40'	L 93	S 67°53'00"E	145.40'
L 43	N 72°58'00"E	51.50'	L 94	S 09°06'00"E	80.70'
L 44	N 76°48'00"E	117.20'	L 95	N 52°20'00"E	96.30'
L 45	N 46°40'00"E	81.00'	L 96	S 52°58'00"E	74.30'
L 46	S 42°56'00"E	47.10'	L 97	N 06°40'00"E	223.20'
L 47	S 18°16'00"W	46.20'	L 98	N 73°29'00"E	70.00'
L 48	S 16°29'00"E	65.70'	L 99	S 78°46'00"E	73.20'
L 49	S 60°36'00"E	129.60'	L 100	N 72°50'00"E	58.80'
L 50	N 86°12'00"E	115.80'	L 101	S 08°13'00"E	256.70'
L 51	N 38°29'00"E	160.70'	L 102	N 45°23'00"E	71.90'
L 52	S 87°42'00"E	181.70'			
L 53	S 64°25'00"E	148.70'			
L 54	S 50°58'00"E	156.50'			
L 55	N 87°52'00"E	101.80'			

BEN H. NELSON ET UX
 4 TRACTS
 VOL. 171, PG. 345
 O. P. R. C. C.
 449.3625 ACRES
 -2.066 ACRES IN TEXACO TRACT
 447.2965 ACRES NET

I, Robert L. Hall, Jr., Reg. Professional Land Surveyor No. 1610, and County Surveyor of Chambers County, Texas, do hereby certify that this plat delineates the results of a survey made under my supervision on the ground during June and July, 1995.

WITNESS my hand and seal at Baytown, Texas, this 19th day of August, A.D., 1995.
 REG. PROFESSIONAL LAND SURVEYOR
 NO. 1610
 COUNTY SURVEYOR
 CHAMBERS COUNTY, TEXAS



NOTE: THE SHORELINE OF TRINITY BAY AND ALLIGATOR BAYOU AND BEAUREGARD BAYOU WERE INSPECTED BY ME ON MAY 3, 1995, AND I FOUND THAT THESE LINES HAVE NOT CHANGED APPRECIABLY SINCE JUNE AND JULY OF 1993.



NOTE: ALL BEARINGS ARE LAMBERT GRID BEARINGS AND ALL COORDINATES REFER TO THE STATE PLANE COORDINATE SYSTEM, SOUTH CENTRAL ZONE, 1927 DATUM. ALL DISTANCES ARE ACTUAL DISTANCES.
 POINT OF ORIGIN: SMITH POINT USE, 1900
 Y = 639,840.44
 X = 3,346,429.94

JOB NO.: 95-0865H
 CHECKED BY: AMK
 SCALE: 1" = 400'
 DRAWN BY: RLHJ
 BUSCH, HUTCHISON & ASSOCIATES, INC.
 ENGINEERS & ARCHITECTS • SURVEYORS
 1107 FLEETWOOD DRIVE, BAYTOWN, TEXAS
 77522-6213

Counter 18108