

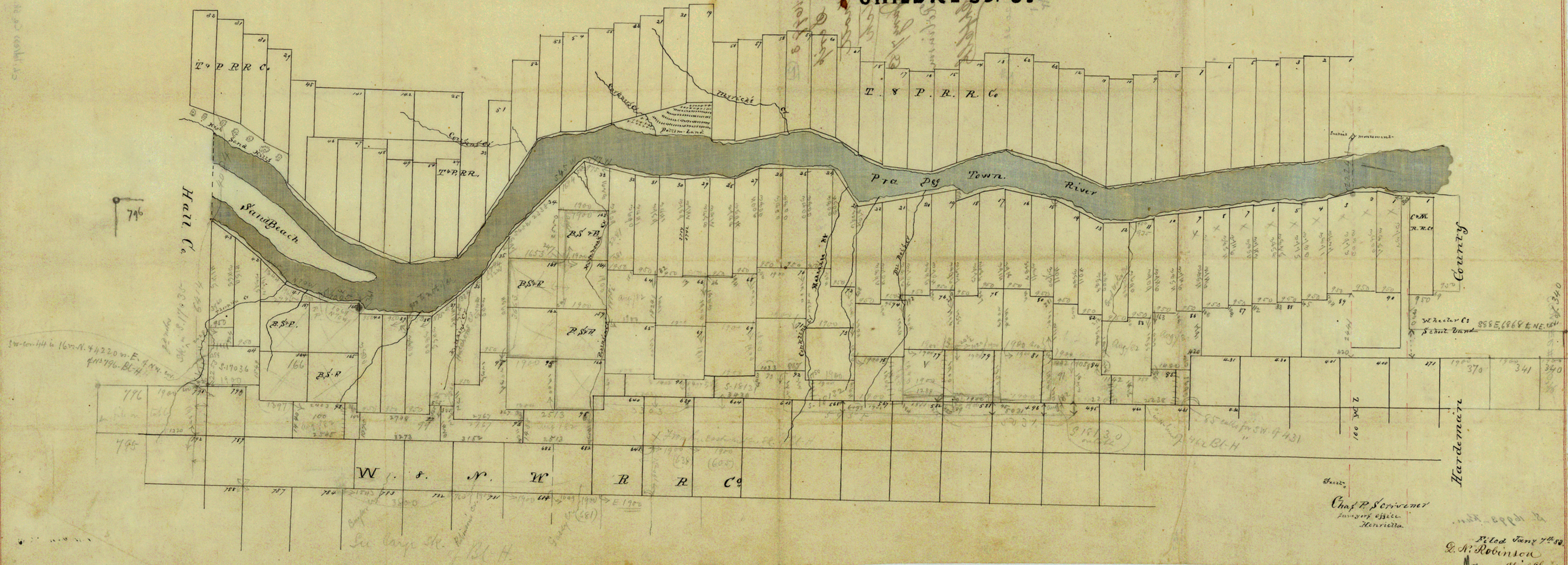


C. W. Pfeiffer & Co.
 1190 2nd St.

April 13/83.
 C. W. Pfeiffer

Counter 18244

CHILDRESS. C.



Chas. P. Scrivener
Surveyor Office
Hardeman

Filed June 7th 80
G. A. Robinson
Chief Clerk

File: 2^a

Childress Co.

South of Prairie Dog
River

✓ Skelton from
Farm No. 16993
F. P. Knott

Counter 18243