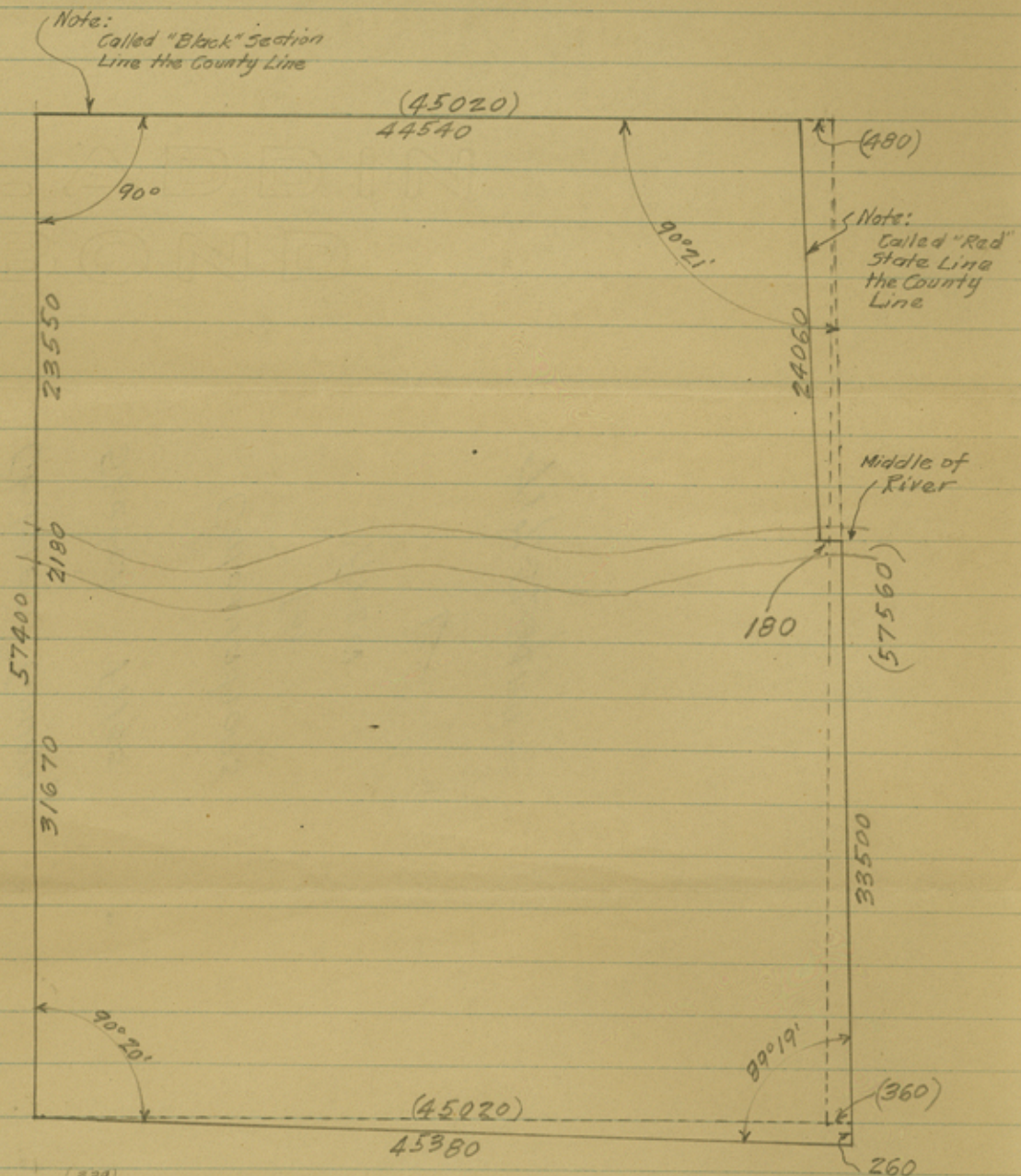


Childress County



$$\frac{180 + 480}{2} \times 24060 = 7,939,800$$

$$45020 \times 57400 = 2,584,148,000$$

$$45380 \times 130 = 5,899,400$$

$$57400 \times 180 = 10,332,000$$

$$2,600,379,400$$

$$7,939,800$$

$$2,592,439,600 \text{ sq. ft.}$$

$$459,212.73 \text{ Acres}$$

$$717.52 \text{ sq. mi.}$$

J. Barrow
2-13-35

Counter 18364

-18a-

Childress County

Sketch Files

Calculations

for
Area

✓

717.52 Sq. mi.

Counter 18365