

File 13.

Clay Co.

Mouth of Little Wichita

Counter 18413

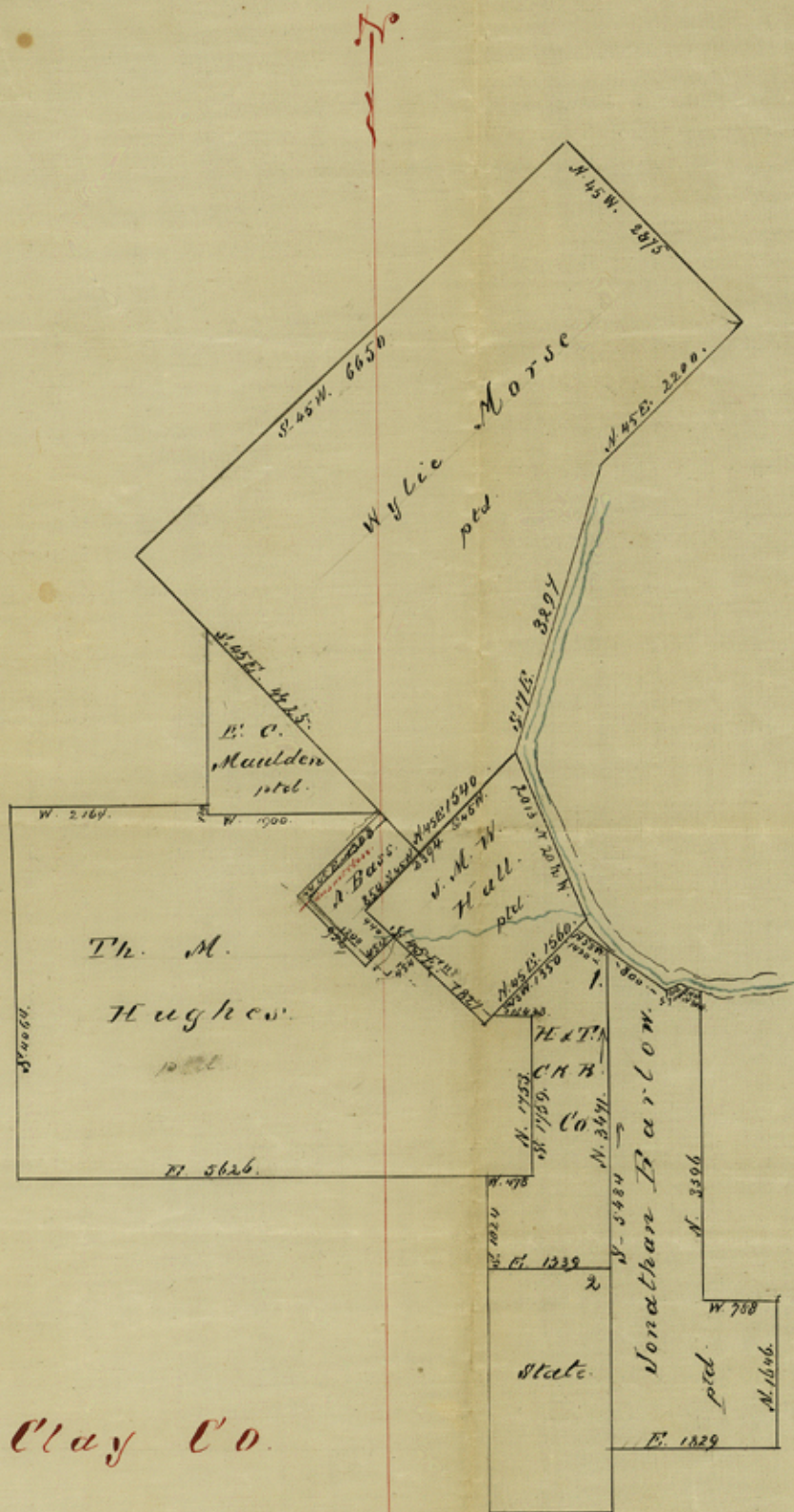


Calhoun
Co School
Land.

Counter 18914

Sketch - 13.

File No. 13.
Clay County.



Clay Co.

Scale: 2000 vrs. to an inch.
Gen's Land Off. Sept 13. 75.

Filed Sept. 13. 75.
J. Admitts. Counter 18415

13.

Sketches Mouth of Little Wichita
River.

Clay Co

Courtesy 18416