

State of Texas

Clay County Field Notes of a connecting  
line run from the S.E. corner  
of the A Brinkley survey of 424 acres situa-  
ted in Clay County on the waters of East Fork  
of Little Wichita, and the S.E. corner of the  
J T Crawford sur N<sup>o</sup> 47.

Beginning at a pile of stone, the S.E. corner  
of said A. Brinkley sur. whence a post oak  
bears N 34° W. 48 m. a do. N 52° W. 50 m.

Thence North 1522 m. to his N.E. corner and the  
S.W. corner of sur N<sup>o</sup> 1 for the T & N.O. R.R. Co

Thence North at 1437 m. pass the N.E. corner of  
N<sup>o</sup> 10 same co. in all 3337 m. the N.E. cor-  
ner of N<sup>o</sup> 9 for same co.

Thence West 2631 m.

Thence North 492 m. the S.E. corner of the  
Wm Williams survey of 320 acres. from which  
bears a P.O. N 81° W. 3 1/2 m. a do. bears N 29 W.  
3 1/2 m.

Thence N 4290 m. the N.W. corner of the R.  
Sauegas survey.

Thence N at 1355 m. a point 250 m. East  
of the N.E. corner of James Walker sur N<sup>o</sup> 49.

Thence N 2852 m. Thence East 1195 m.  
the S.E. corner of the J T Crawford N<sup>o</sup> 47.

Surveyed April, 15th 1880.

W. B. Smith & J. Garbrough Chainmen

J. C. B. Pattenon Surveyor of Clay County  
do hereby certify that the foregoing Field  
Notes were made according to law, and  
the same are recorded in my office  
in Book A, N<sup>o</sup> 2 on page 352.

C. B. Pattenon

Sur Clay Co.

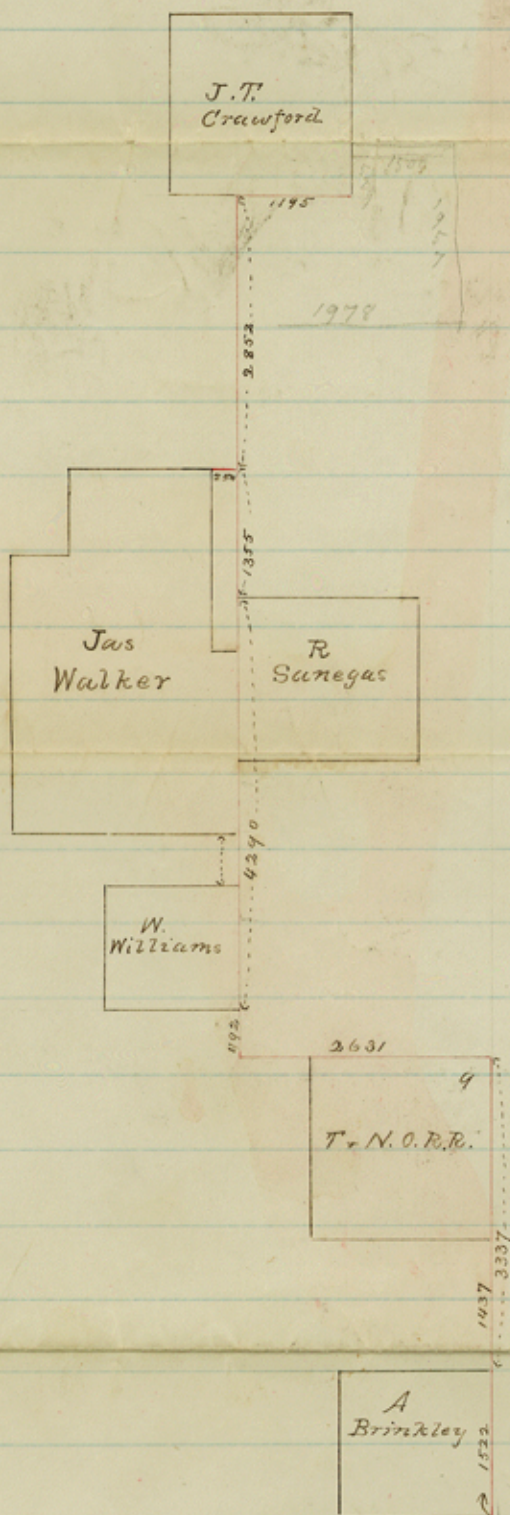
File 22.

Clay County

Connecting line filed  
May 17<sup>th</sup> 1880.

Charles Fisher  
Chf. Sur.

This certificate is made by  
me in rolling for Surveyor  
J. C. B. Pattenon - Surveyor being  
bearing and deposit on the  
old for connection.



2852  
 1355  
 4290  
 492  
 ---  
 8989

Scale, 2000 varas = 1 inch

J. C. B. Pattenon Surveyor of Clay  
 County do hereby certify that the foregoing sketch represents the  
 true position on the ground of the several surveys shown  
 thereon.

J. C. B. Pattenon Sur. Clay Co.  
 Center 18438