

Dec. 15-1913-

Dear John:-

This is all the information I have  
in or about Hall Co S.L., W.D.T.



W.D.T. - File 2003.

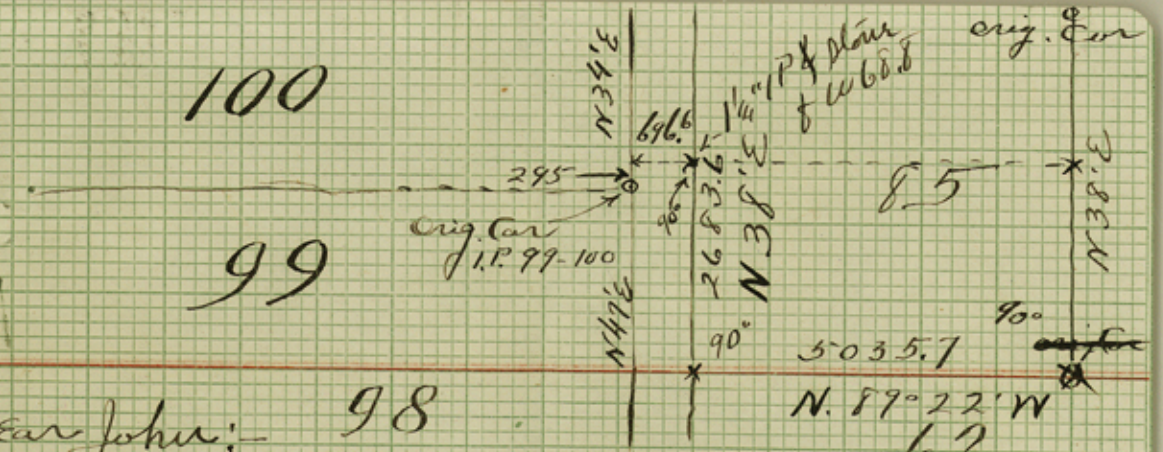
100

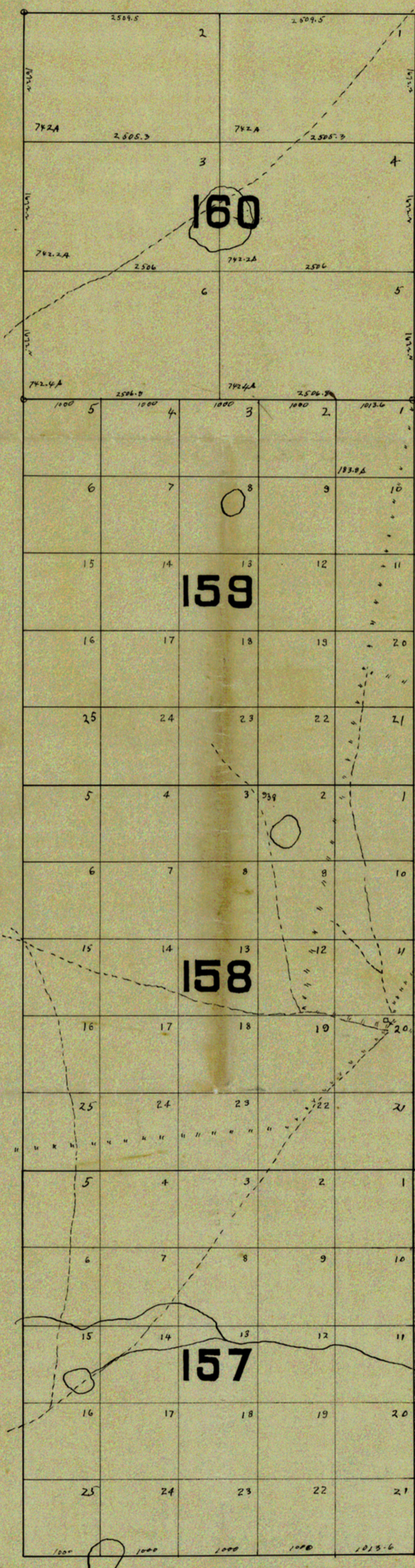
99

Dear John:-

98

I hand you above the result as shown  
in our field book from S.E. of School  
Tracer 85 to S.E. 100. I think this  
supplies all you requested in  
Cochran  
yours truly  
W.D.T.





**SUBDIVISIONS**  
 OF  
**HALL COUNTY**  
**SCHOOL LAND**  
 SITUATED IN  
**BAILEY AND COCKRAN**  
**COUNTIES,**  
**TEXAS.**  
 OWNED BY  
**G. T. OLIVER,**  
**AMARILLO, TEX.**

Scale 1000 Varas 1 inch

I, W. D. Twichell, a practical surveyor,  
 do hereby certify that this sketch is  
 true and correct, and that it correctly  
 represents the subdivisions of Hall  
 County School Land Leagues, Nos. 157,  
 158, 159 and 160 as actually surveyed by  
 me on the ground in September, 1907.  
 W. D. Twichell surveyor.

Copied in General Land Office - Dec. 18-1913,  
 by J. W. Pritchett, from blue print furnished by  
 W. D. Twichell.

*Plane 50*

SKETCH FILE NO. 2  
 COUNTY Cochran

COUNTY # 11099 4