

No. 2. OLD 30

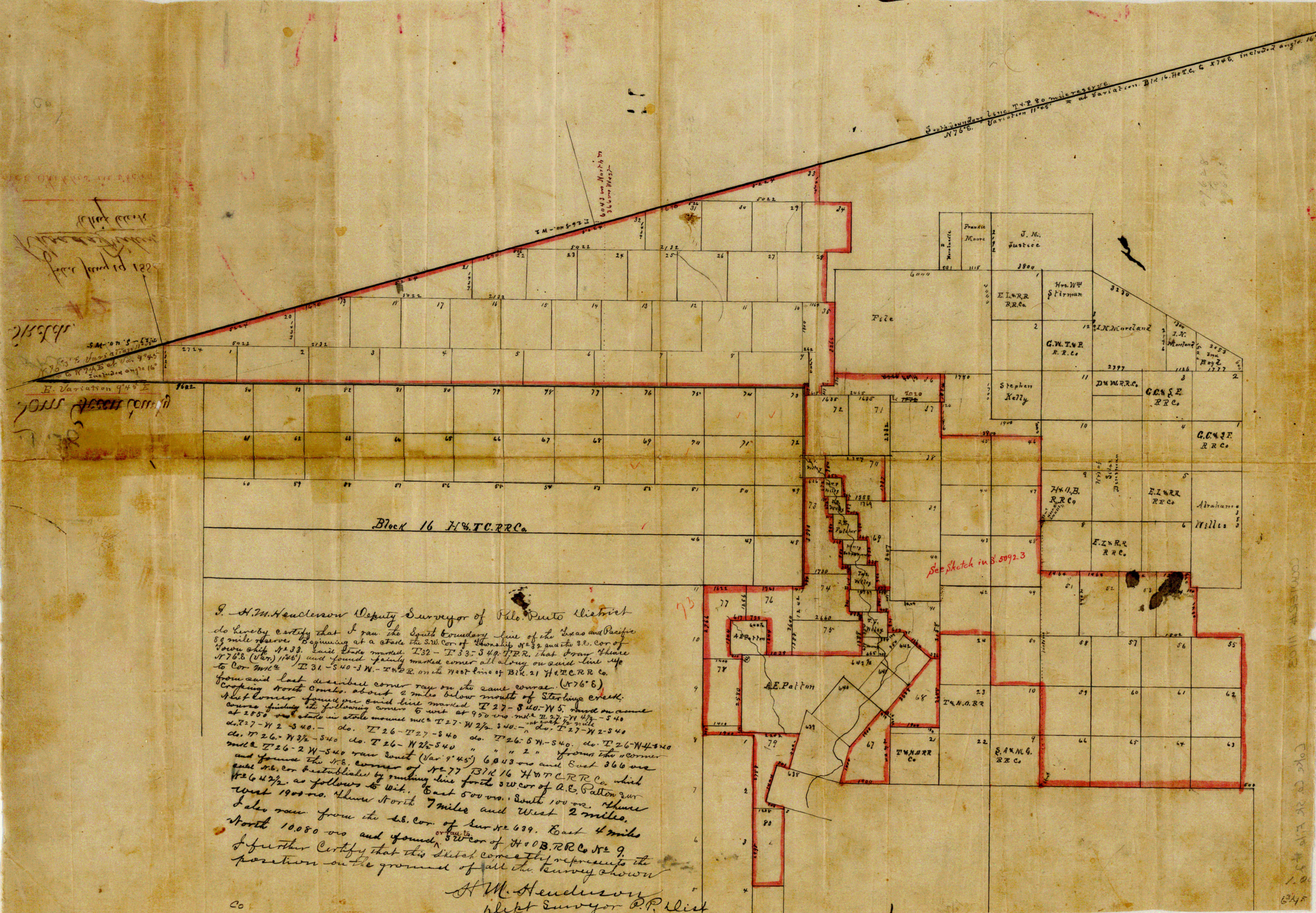
H.M. Henderson's 5K. ons. line of the
T & P. 80 Mi. Reservation

Filed Jan'y 19, 1880.

coke co

Counter 18565

South Boundary Line T.P. 80 miles above
 N 76° E. Variation 11° 46' at Variation. Bk 16. H.C.R.R. Co. 5746. included angle 16°



I, H.M. Henderson Deputy Surveyor of Palo Verde District do hereby certify that I ran the South Boundary line of the Texas and Pacific 80 mile above beginning at a stake the S.W. cor. of Township N 32 and the S.E. cor. of Town ship 12 33. said stake marked T 32 - S 40. T.P.R. that from thence N 76° E (Var. 11° 46') and found faintly marked corner all along on said line up to cor. marked T 31 - S 40 - T.P.R. on the West line of Bk. 21 H.C.T.C.R.R. Co. from said last described corner ran on the same course (N 76° E) crossing North Combes about 2 miles below mouth of Sterling Creek. Next corner found on said line marked T 27 - S 40 - W 5. and on a course finding the following corner to wit at 950 vrs. mls. T 27 - W 4 1/2 - S 40 at 2850 vrs. stake in stone mound marked T 27 - W 2 1/2 - S 40 - do. T 27 - W 2 - S 40 do. T 26 - W 3 1/2 - S 40 do. T 26 - W 2 1/2 - S 40 do. T 26 - W 2 - S 40 do. T 26 - W 1 1/2 - S 40 do. T 26 - W 1 - S 40 do. T 26 - W 1/2 - S 40 do. T 26 - W 1/4 - S 40 and found the N.E. corner of Bk 16 H.C.T.C.R.R. Co. which said N.E. cor. established by running line for the S.W. cor. of A.E. Patton 200 vrs. N 26° 42 1/2' as follows to wit. East 500 vrs. South 100 vrs. thence west 1900 vrs. thence North 7 miles and West 2 miles. I also ran from the S.E. cor. of Bk 16 639. East 4 miles North 10,080 vrs and found ^{or ran to} S.W. cor. of H.C.B. R.R. Co. N 2 9.

I further certify that this sketch correctly represents the position on the ground of all the survey shown

H.M. Henderson
 Deputy Surveyor P.V. Dist