

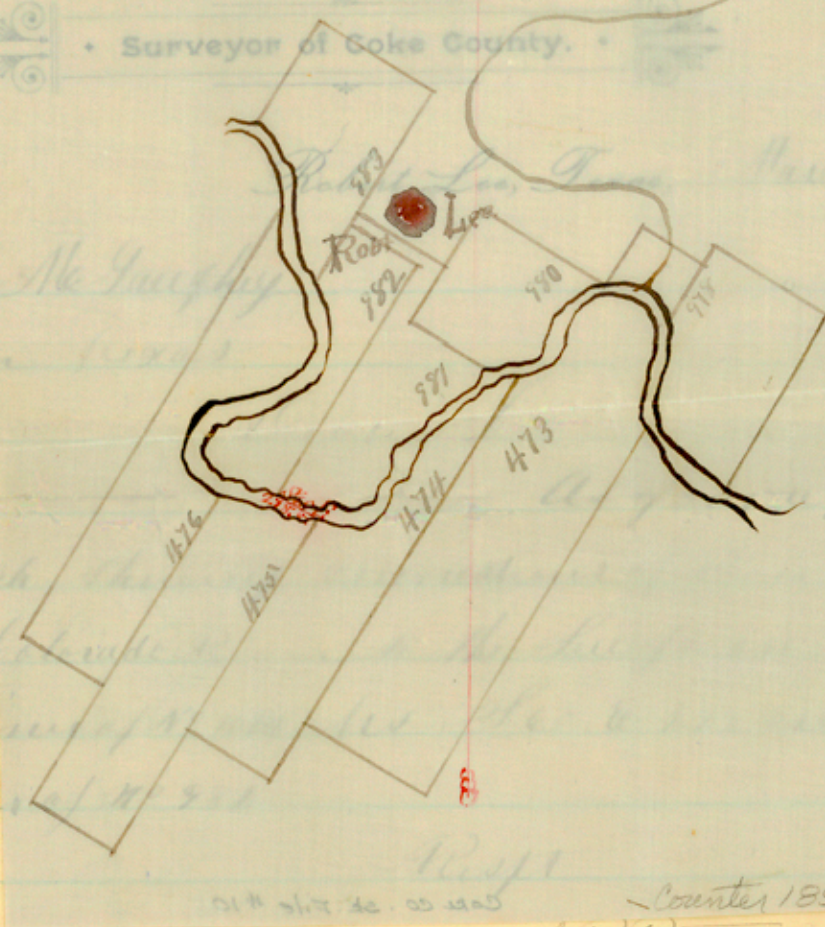
Office of.

J. R. PATTESON,

Surveyor of Coke County.

962

1892



Hon. W. McQuay
Coke County

you a sketch showing the location of the parcels on both side of the road. The upper corner of parcel 482 is on the upper corner of parcel 474.

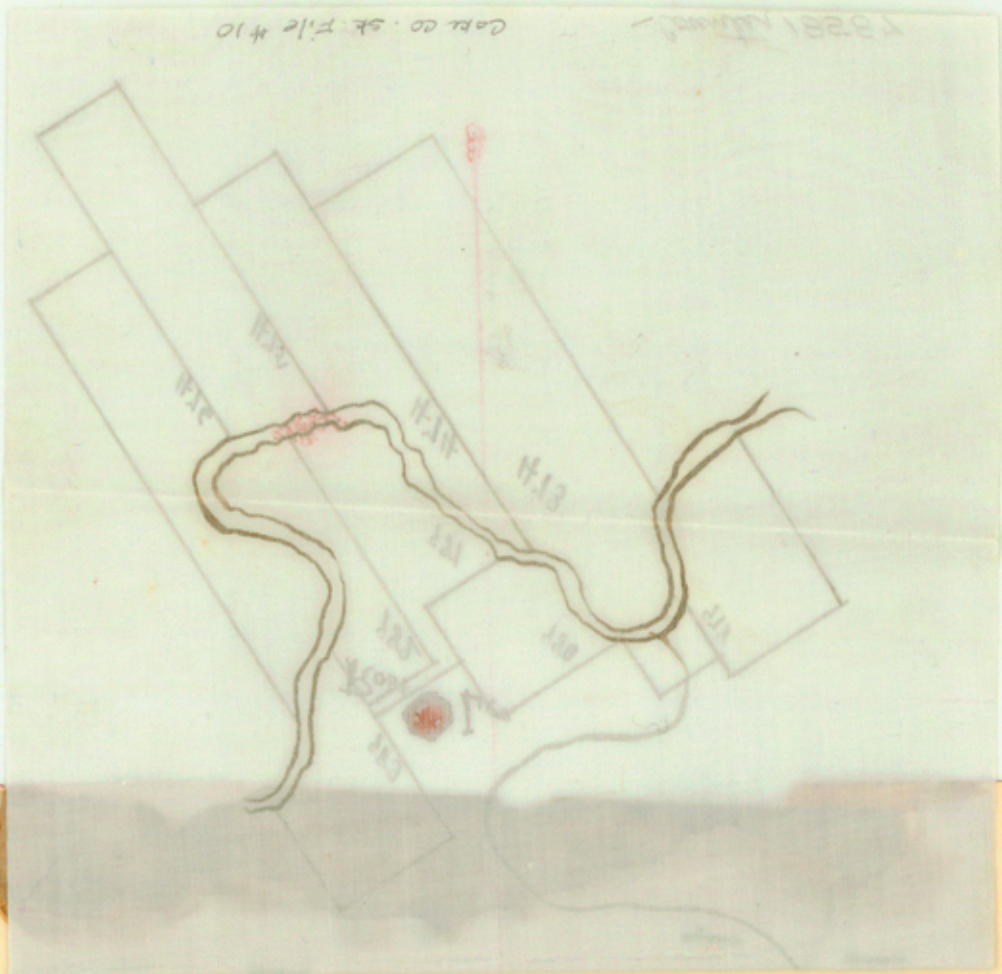
Cor. Co. of File #10

Counter 18587

J. R. Patteson

Co. Surveyor
Coke Co., Ga.

Counter 18588



Office of.

J. R. PATTERSON

• Surveyor of Coke County. •

962

Robert Lee, Texas, March 24th 1892

Hon. W. McLaughlin
Austin Texas

Dear Sir,

As four years ago I saw
your sketch showing connections of River Leaps on both
sides of the Colorado River to the Leaps on South Side
the upper corner of No 1174. As Nos 1175 & 1178 are from the
upper corner of No 981.

Respt

J. R. Patterson

Co Surveyor
Coke Co.

Filed in Genl Land
Office Mich 31/92
Coke Co.

Counter 18589