

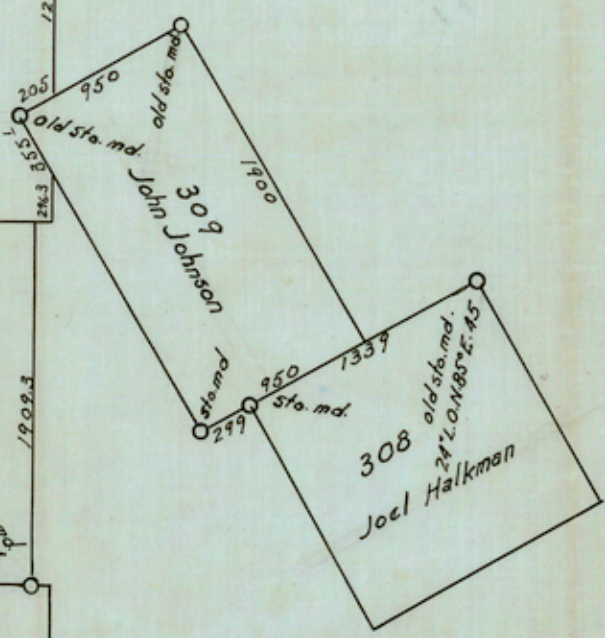
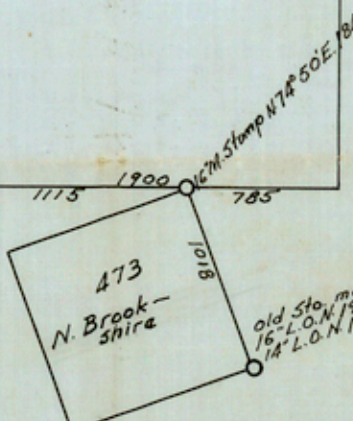
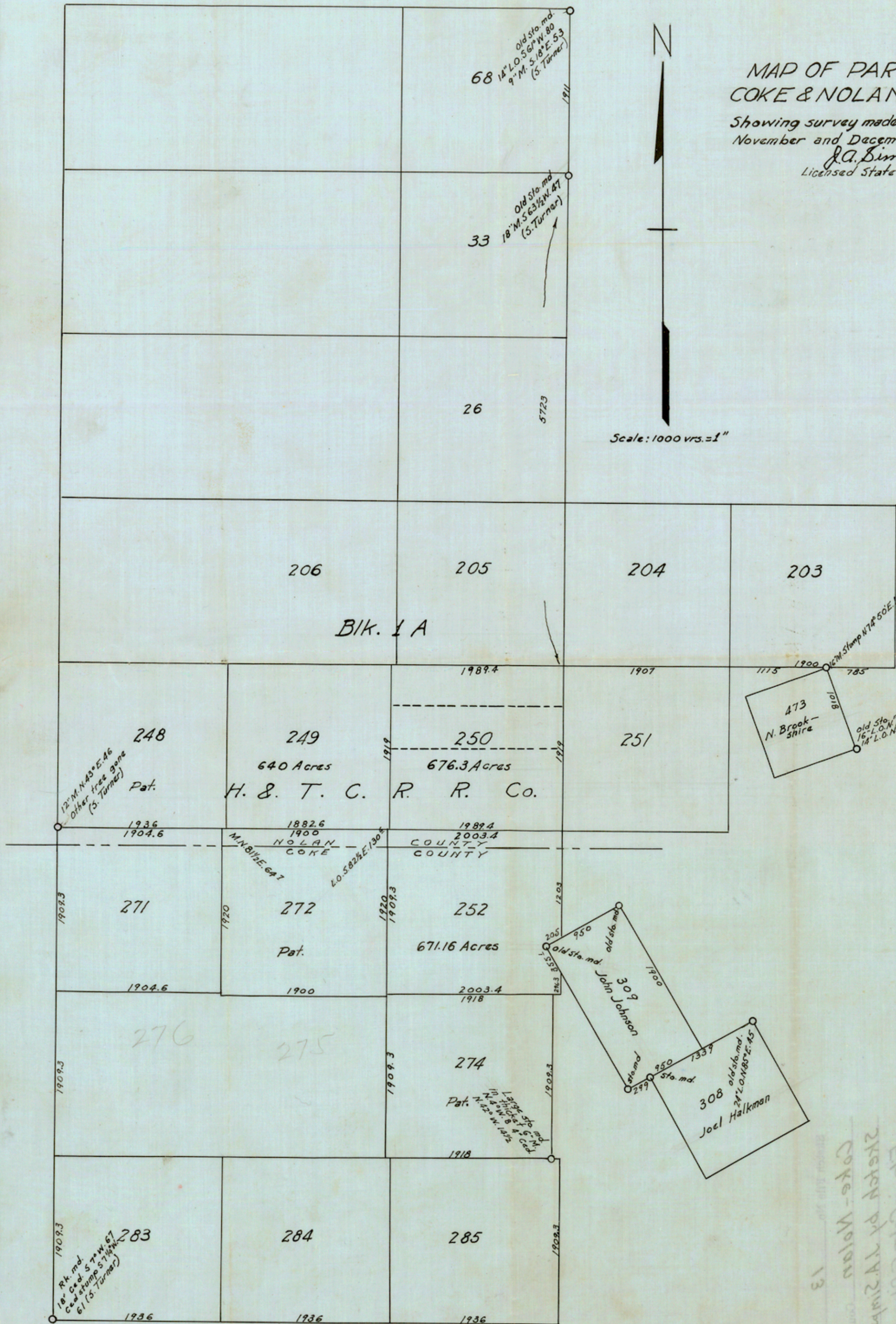
MAP OF PART OF
COKE & NOLAN CO.'S.

Showing survey made by me in
November and December 1936.

J.A. Simpson
Licensed State Land Surveyor.

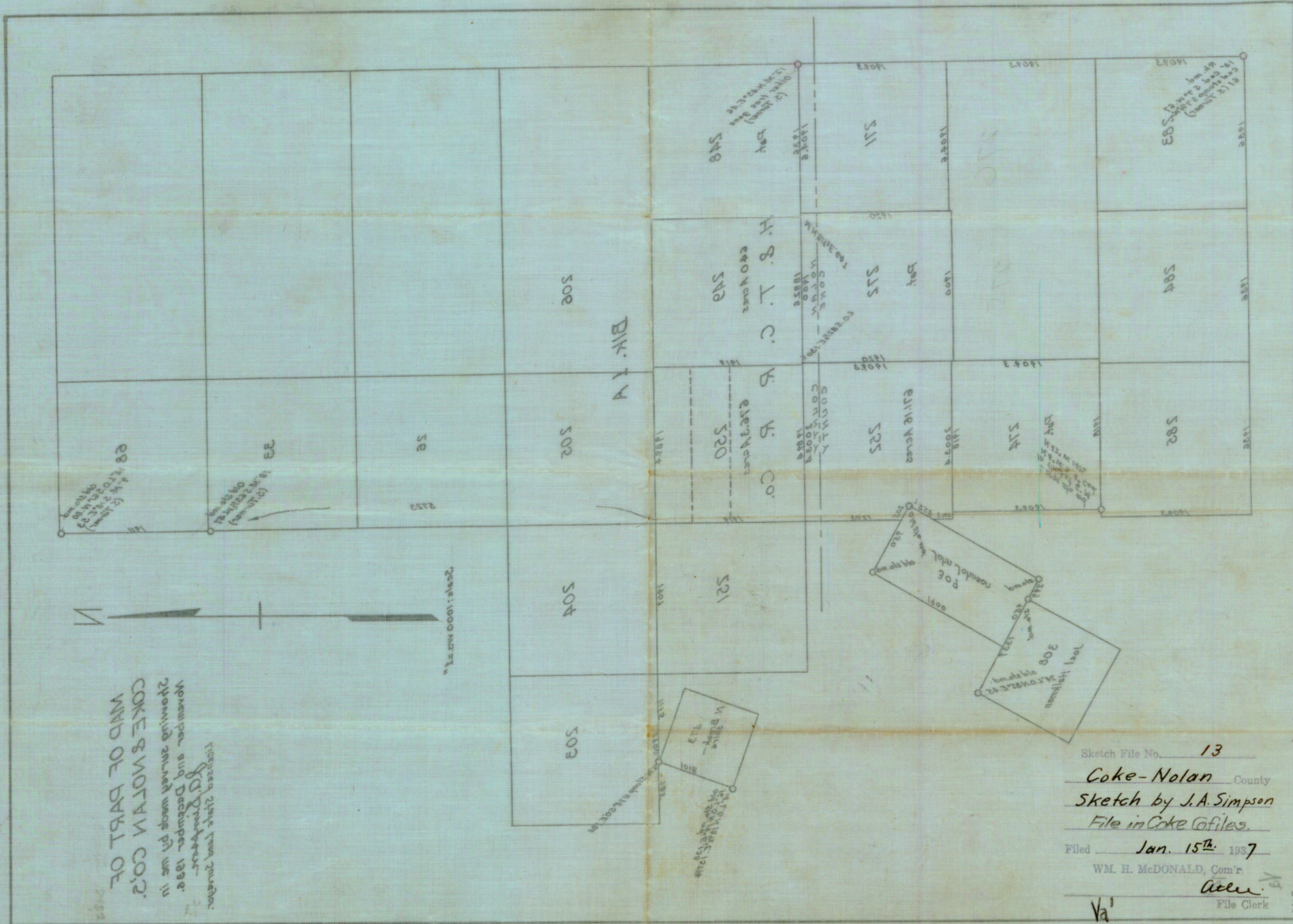
N

Scale: 1000 vrs. = 1"



AT 5 RECORDING OFFICE
Jan. 12, 1937
J.A. Simpson
Va

Counter 18596



Received State Land Grant
 November and December 1838
 Showing survey made by me in
 COKE & NOTYAN CO.'S
 PART OF

Sketch File No. 13
Coke-Nolan County
 Sketch by J.A. Simpson
 File in Coke files.
 Filed Jan. 15th 1897
 WM. H. McDONALD, Com'r.
Allen
 File Clerk
 Va.

Counter 18597

Original 1828