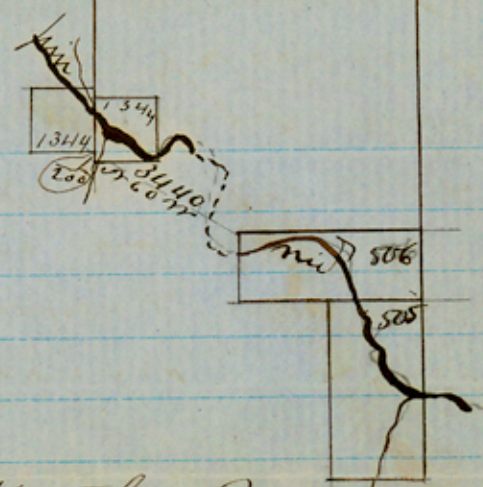
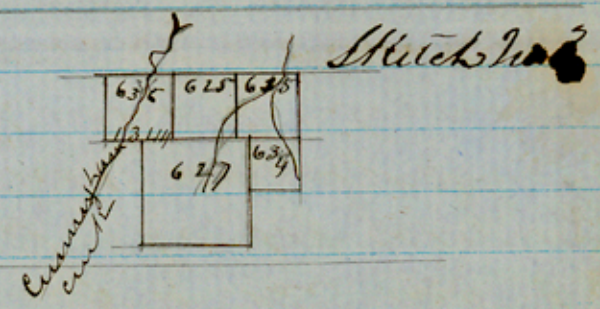


Sketch No. 1.



Sketch No. 2.



Sketch No. 3.

To the Com of the Genl L.O.

In compliance with instructions from your office I forward to the above & foregoing sketches showing work done by me in the county of Colman up to the end of Quarter that closes on the 1st August 1854. In Sketch No. 1. Surveys Nos 751 & 752. Sketch No 2 Surveys Nos 749 & 750 & in Sketch No 3 - 636 were made & the field notes have been forwarded to your office.

There are no certificates on file in my office - all having been returned to your office & forwarded all of which is respectfully submitted - copied to as correct this 1st August 1854. Lt. S. M. S. Spec. Supt Colman Co.

Recd August 2/54
S. M. S.

counter 18678

over

P.S. In about three months
I will post you again ~~etc~~
L

File 10. 4

Coleman County
Recd Aug 17/59

Book 18680