

Coleman Co.

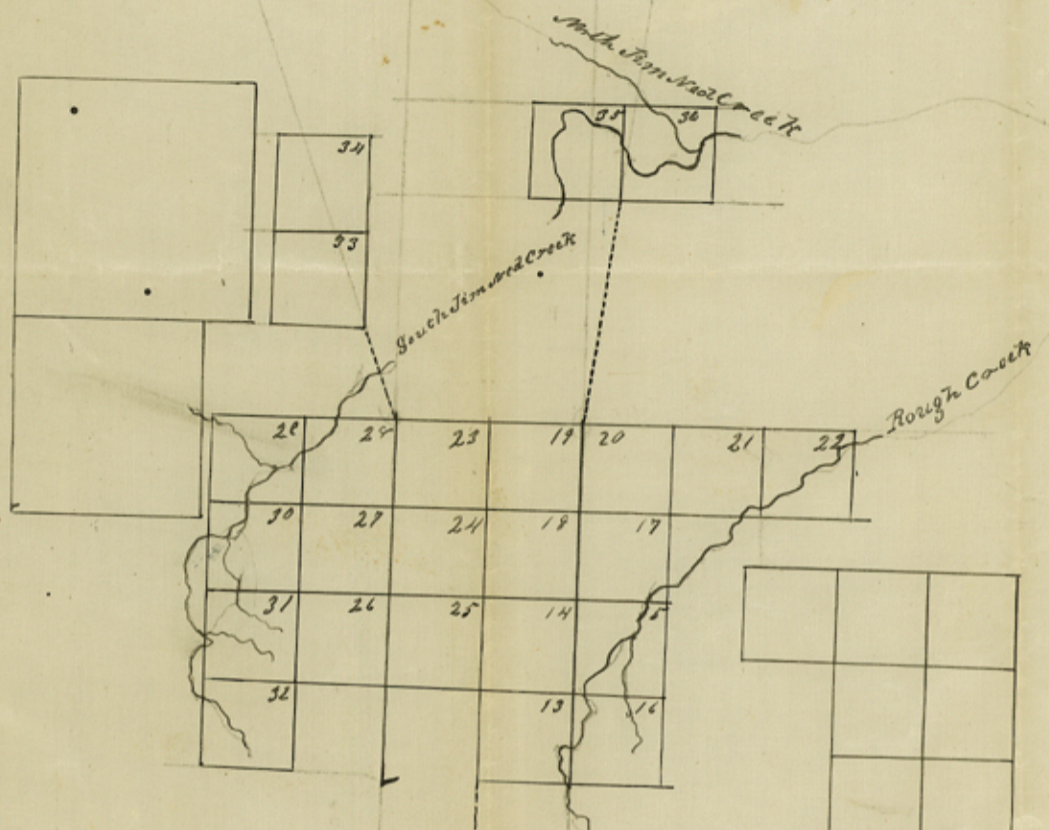
---

To N. O. R. R. Co  
in the NW Corner  
of the County.

Filed Aug. 9/81.

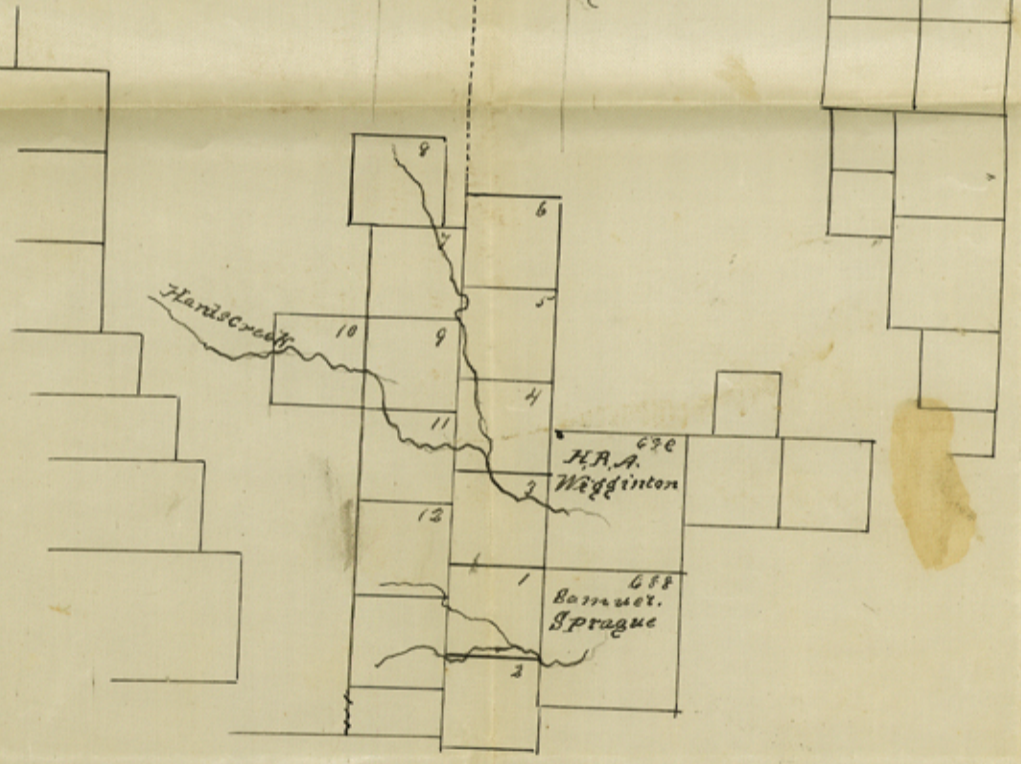
J. H. [Signature]

County 1868



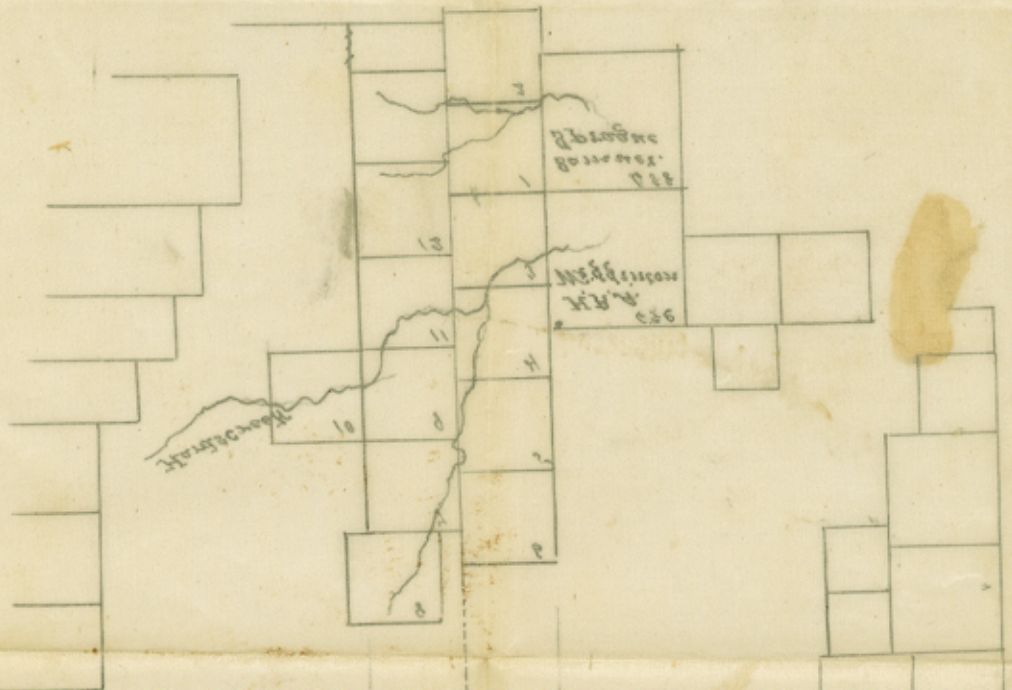
Hand-drawn map of the County of...

1868



County 1868

88981 returned



File 18.

Coleman Co.

Filed Aug. 9/71. Ed. Shady.



Counters 18689

I L. H. Sackett Deputy Surveyor  
for Travis Land District do  
hereby certify that the N E cor-  
ner of Survey No 14 made by  
me for the Southern P R R Co  
& the N W corner of No 31  
made by R. Harrisony Ld,  
S. T. D. for the Texas N. O.  
R R Co ~~and~~ is the same cor-  
ner as will show from the  
bearing trees and that I did  
find the N W corner of said  
No 31 on the ground - both Sur-  
veys are in columnar Co;  
8 August 1871 L. H. Sackett  
S. T. D. District

File 18.

Coleman Co.

Filed Aug. 9/71.

S. A. [unclear]

File 557.  
Travis. [unclear]

Butler. P. O. [unclear]  
G. S. 13. 6 [unclear]  
L. 14. 0 [unclear]

Counter 18691