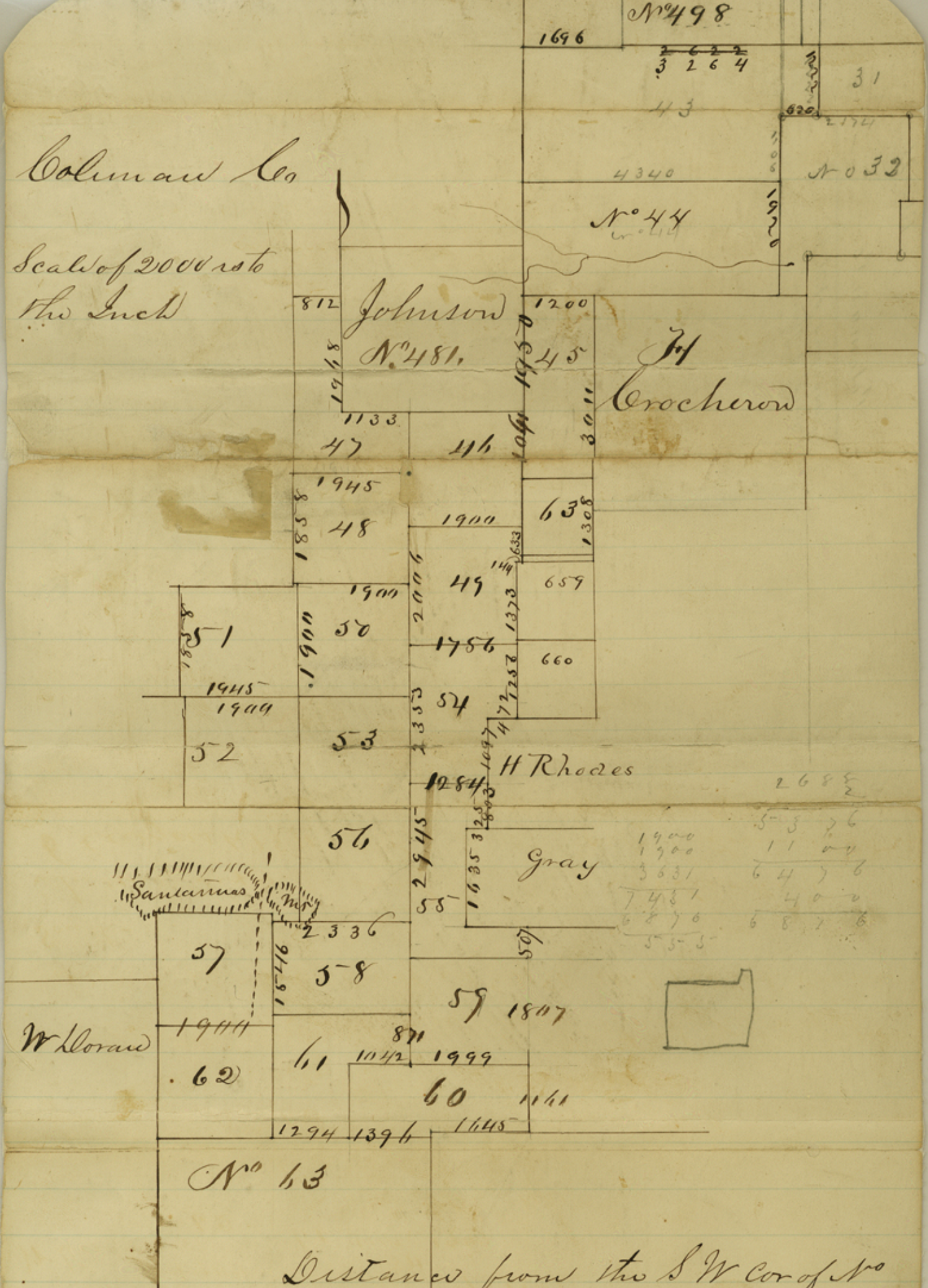


1696  
 N<sup>o</sup> 498  
 $\begin{array}{r} 2622 \\ 3264 \\ \hline 4340 \end{array}$   
 43  
 31  
 620  
 2172

Colman Co

Scale of 2000 to the Inch



Distances from the S.W. Cor of N<sup>o</sup> 44 to the S.E. Cor of N<sup>o</sup> 481. is 1950 vs course South-

Austin Texas  
 6 August 1871

L. H. Suckett  
 Dep S. Lewis Co  
 Counter 18694



Coleman County

Surs. around Santa Anna Mt.  
L. H. Lockett

Dated 8-6-71

Filed 8-9-71