

Sketch of Connecting lines of
Surveys. Colman Co. waters of
Jim Red Creek.



Note.
This sketch represents the
Connections with the Original Surveys,
the corners of which, were found
and identified upon the ground.
The red lines indicating the
Connections with said Original
Surveys, and the courses and
distances are correct, and
subsequently verified by sectional
line surveys. Original corners
found marked on this sketch
Thus - ©

James Bondeno
Deputy Surveyor
Colman Co.
July 20 1873

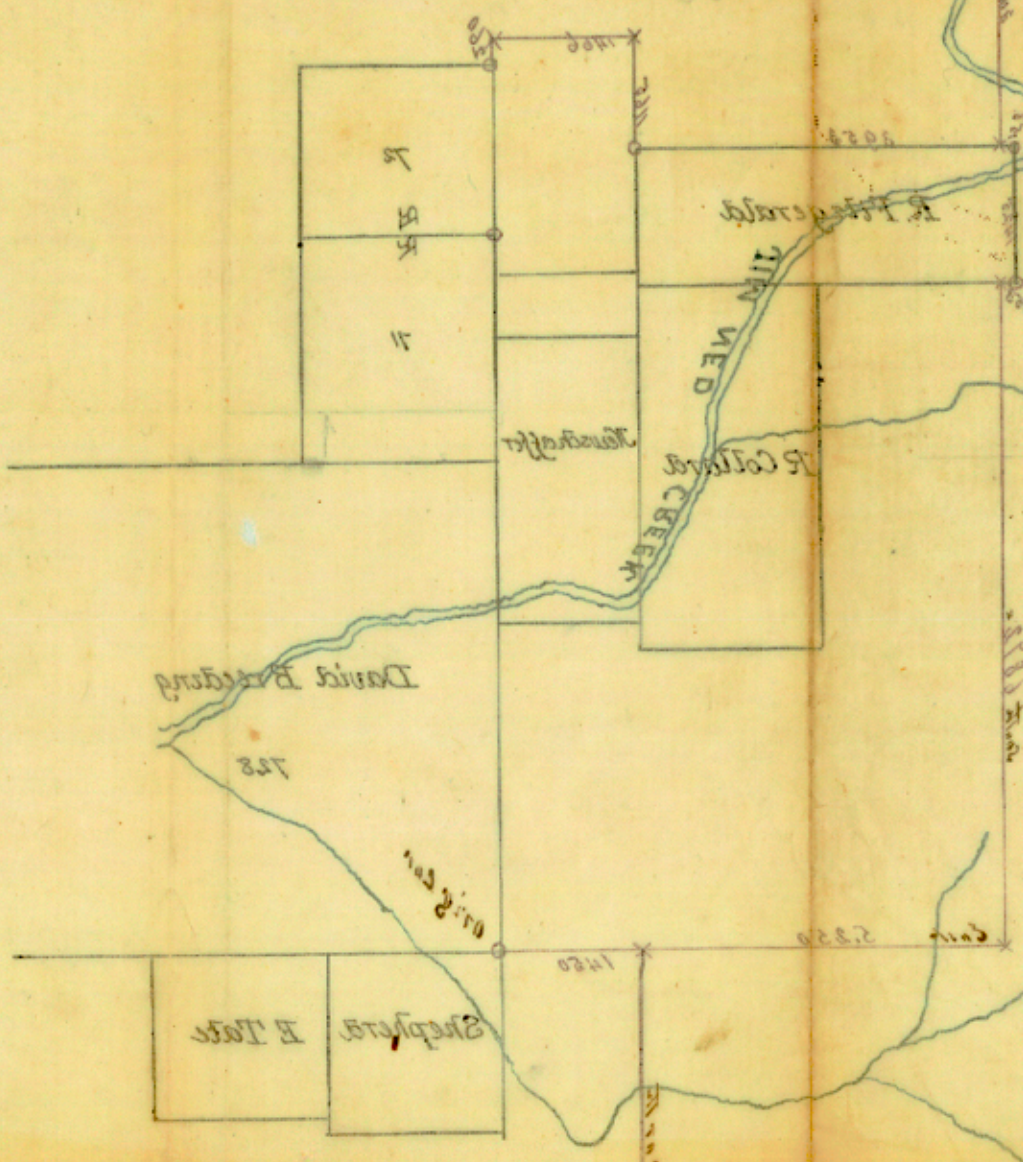
7/19 and 20/73
1873

Original Corners
found & identified marked ©
2000 $\frac{1}{4}$ to 1 inch

Original corners
found & identified
marked ©
2000 $\frac{1}{4}$ to 1 inch

1111 Timmed Creek

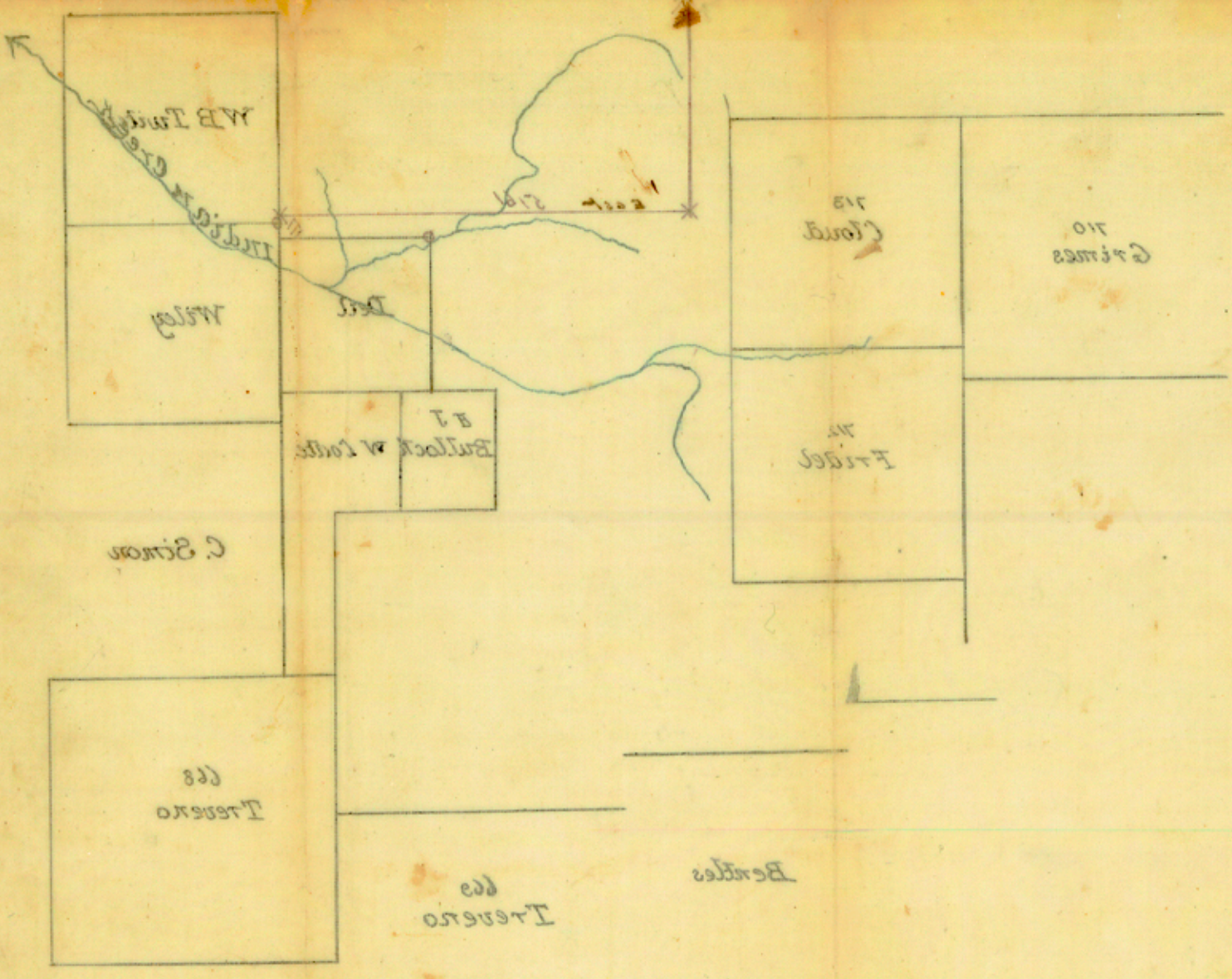
Sketch of connecting lines of
Survey. Column of water of
the Red Creek



Note
 This sketch represents the
 connection with the original survey.
 The corners of which were found
 and adjusted upon the ground.
 The red line indicating the
 connection with said original
 survey, and the same was
 distances are correct, and
 subsequently verified by actual
 line survey. Original survey
 found correct on this sketch
 this = 0

James Bergend
 Deputy Surveyor
 1870

Filed Dec 9/70
 Ch. Ch.



Original Survey
 found & adjusted & corrected
 same as 1111

Filed Dec 9 1870
 James Bergend
 etc