

General Land Office

Austin City, May 21<sup>st</sup> 1892.

Statement.

The N. W. corner of the Waco Manuf. Co. survey N<sup>o</sup> 11 has been identified by Mr Friedenhaus and W<sup>m</sup> Bramlette - without any doubt.

Mr Friedenhaus also found a pile of stones 212 <sup>ors</sup> East and 409 <sup>ors</sup> North of said N. W. corner of survey N<sup>o</sup> 11, which may be the original S. W. corner of Coleman Co. Schoolland survey N<sup>o</sup> 91, <sup>set up by R. G. Bowen;</sup> at least, if adopted as the beginning corner of N<sup>o</sup> 91, the courses and distances called for, would reach the surveys North of said survey by only a difference of 4 <sup>ors</sup>.

The question however whether the space between the Northline of N<sup>o</sup> 11 and Southline of N<sup>o</sup> 91 be vacant should be decided by the Court, because N<sup>o</sup> 91 calls to begin at the N. W. corner of N<sup>o</sup> 11.

Eugene Mangrum's presumption claims a vacant space 401 <sup>ors</sup> wide between the Southline of N<sup>o</sup> 91 and the Northline of N<sup>o</sup> 11. (See Travis P. 2143).

Commissioner of the General Land Office.

Counter 18775

Statement.

N<sup>o</sup> 91. Coleman Co. Schoolland begins at the N.W. corner of Waco Manuf. Co. survey N<sup>o</sup> 11., which corner is described as a stake from which a Liveoak 8 in. dia brs S 7° E 103 vs (which corner has been identified) while survey N<sup>o</sup> 91 calls for a stonemound on top of a hill.

Mr Friedenhaus in running from J. Garcia's S.W. corner on Colorado river North calls for a pile of rocks at 7000 vs — if this corner be adopted as the beginning corner of N<sup>o</sup> 91, the courses and distances, called for, would reach the surveys North of said survey by only a difference of 4 vs, but a vacancy, 409 vs wide, would be left between its Southline and the Northline of N<sup>o</sup> 11 & 12.

If the N.W. corner of N<sup>o</sup> 11 is adopted as the beginning of N<sup>o</sup> 91 its lines would have to be extended 409 vs in order to reach the surveys North of it.

The evidence filed contains no proof for Survey N<sup>o</sup> 91 to begin at the N.W. corner of N<sup>o</sup> 11, though calling for it, while really a stonemound has been found at a place, which, if adopted as the beginning corner of N<sup>o</sup> 91, would make said survey ~~to~~ reach the surveys North of it, at the distance called for.

The question however, whether the space <sup>or not,</sup> between the Northline of N<sup>o</sup> 11 and Southline of N<sup>o</sup> 91 be vacant, should be decided by the Court — the space is now covered by Eugene Mangrum P. 2143. Travis.

May 21<sup>st</sup> 1892

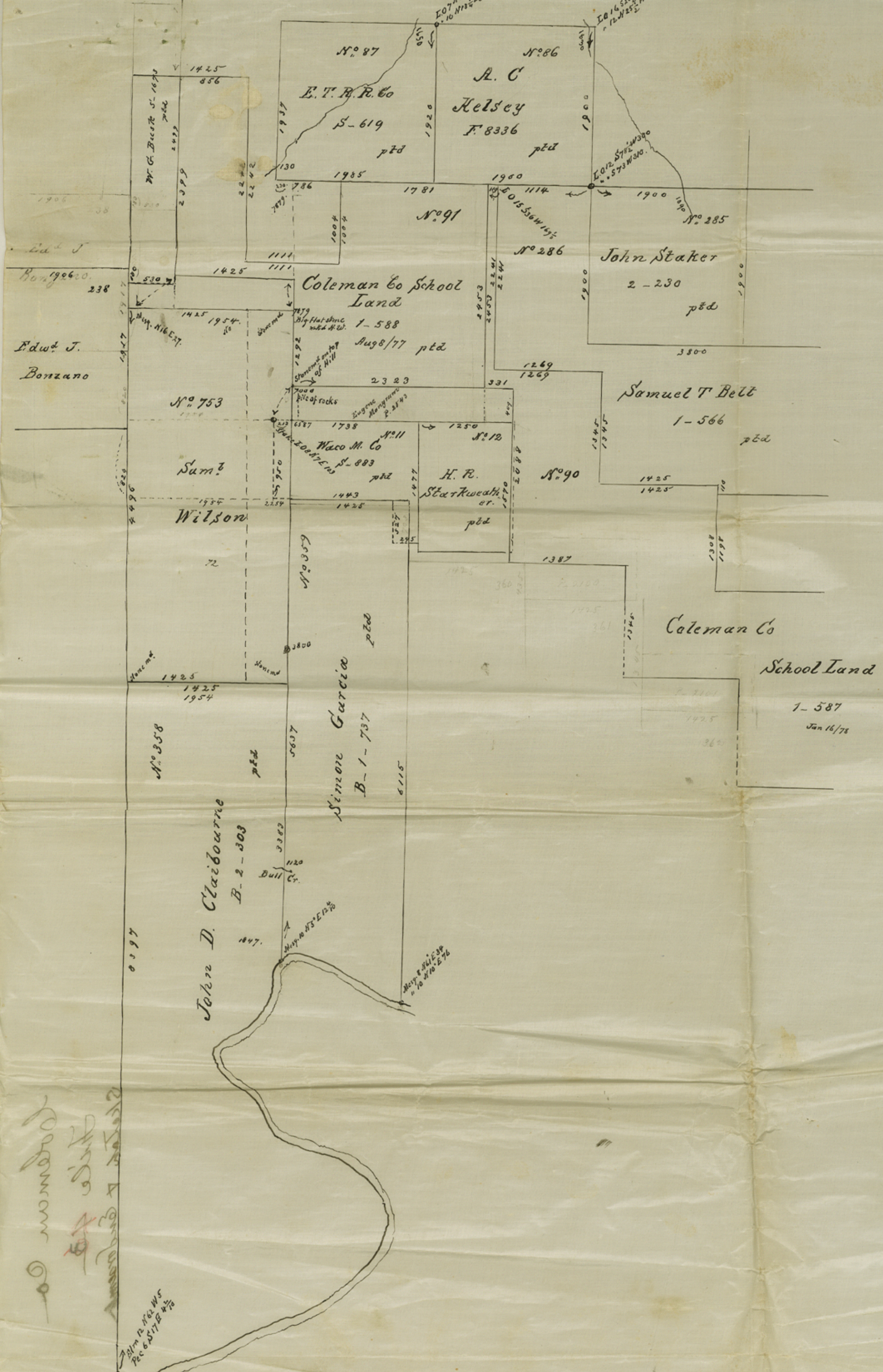
G. W. Pressler

# 43

This statement + sh  
when reported, should  
be returned to my  
desk -

5/21/92

Will



*Edw. J. Bonzano*

Waco M. Co  
 Rec 65178 4 1/2

