

No. 1.

FILED

this 10 day of Feb 1894

R. H. Turner

Clerk District Court, Coleman County, Tex.



Coleman Co. SE. 11. 48

County 1889

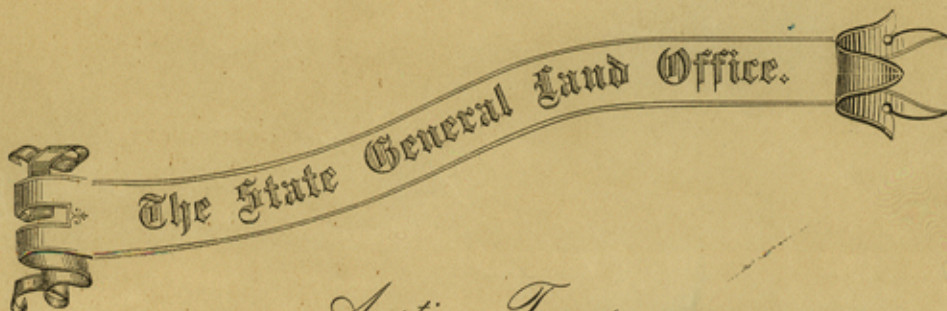


808

ANDREW J. BAKER,

COMMISSIONER OF THE GENERAL LAND OFFICE.

M. E. GROOS, CHIEF CLERK.



Austin, Texas, Oct, 12, 1898.

Mr. John W. Parker,
Taylor, Texas.

Dear Sir;- I beg to state that there is still a great deal of uncertainty about the relative position of the east line of Eleanor Mudd survey No.69, to the west line of E.R.Johnson's survey No.71. The original survey No.70, represented on the old map as connecting No.69, and No.71, and whose dimensions are given by the sketch on the field-notes of No.71, runs with the east line of No.69, north 6143 vrs, thence east 1308 vrs, thence south 4623 vrs. E.R.Johnson's survey No.71, begins at the S.E. corner of No.70, therefore while the distance between Nos.69 and 71, is 1308 vrs, later surveys make the distance 2615 vrs or twice as much as originally called for. If the original connection be adopted, the west line of E.Mudd No. 69, will coincide with the east line of Micajah Clark's survey No.241, as called for by the field-notes of the latter survey. See sketch No.1, herewith. Sketch No.2, represents later surveys claiming the space between surveys No.69 and No.71. By placing sketch No.2, on sketch No.1, it will be seen that Camp Creek called for by the west line of Juan Armendaris coincides with the creek called for by the east line of E.Mudd, and the call for the crossing of Camp Creek on Armendaris' east line agrees with the distance to the creek called for on E.R.Johnson's west line, throwing Nos. 61, 63, 109 & 110, on Johnson's survey No.71. On your sketch, herewith returned) the Johnson west line is shorter than the east line, while according to field-notes it is 986 vrs longer. The county surveyor is requested to furnish this Office a reliable connection from the S.W. corner of E.R. Johnson No.71, to the S.E. corner of Eleanor Mudd's survey No.69, giving all the evidence found on the ground. Very respectfully,

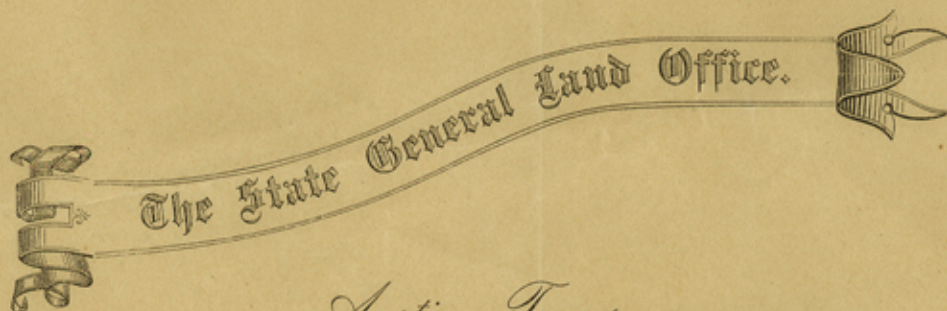
Andrew J. Baker
Commissioner

All payments for School and Asylum Lands must be made to the State Treasurer, and not be sent to this office.

Counter 18803

ANDREW J. BAKER,
COMMISSIONER OF THE GENERAL LAND OFFICE.

M. E. GROOS, CHIEF CLERK.



Austin, Texas, Nov, 28, 1896.

Mr. Jno. W. Parker,
Taylor, Texas.

Dear Sir;- Answering yours of the 24th inst;- I beg to say that a close examination of the C.E.P.I. & M.Co survey in Coleman Co as well as the Juan Armendaris has been made since you were here, and to say that matters are much mixed up in that vicinity expresses it mildly.

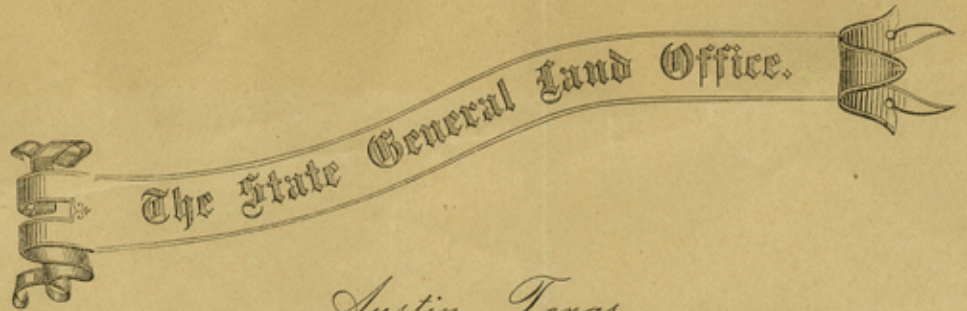
How this matter stands on the ground, I do not know, but so far as the records here show, I am strongly convinced that there is no conflict between these two surveys and the Elenor Mudd league.

This Mudd survey calls to cross creek at 4513 varas from its S.E. corner. The W.B. Blanchard's (survey 70) west boundary line takes up 3247 varas of the east line of the Mudd, and according to the field-notes of the Armendaris, from the S.W. corner thereof out from the N.W. corner of the Blanchard, it appears that the creek called for is reached at 1227 varas. This latter distance added to the length of the west line of the Blanchard will make the total distance of 4474 varas to the creek, while the call in the Mudd field-notes make the same distance 4513 varas, or a difference only of 39 varas which is a slight discrepancy. But it appears that the Armendaris as well as the C.E.P.I. & M.Co survey mentioned as originally surveyed, conflicted in part with the Wm. J. Cannon survey which is the oldest by about two years and is patented. This fact, I suppose you have understood because in 1891, corrected field-notes reducing same to 345 acres, and in these corrected notes the Cannon survey was respected. On these corrected field-notes patent for the Armen-

Note—All payments for School and Asylum Lands must be made to the State Treasurer, and not be sent to this office.

Counter 18804

ANDREW J. BAKER,
COMMISSIONER OF THE GENERAL LAND OFFICE.
M. E. GROOS, CHIEF CLERK.



Austin, Texas,

Paris will now issue, which I suppose is satisfactory to you, as I take it you had this correction made. The C.E.P.I & M.Co survey will also have to be corrected out of conflict with the said Cannon survey when patent can issue on such corrected notes to W.J.Pinson assignee.

Very respectfully,

Andrew J. Baker
Commissioner.

Trav. S. 1010. 1011. (C).

*Copy to
H. J. Baker
C. J. Baker*

C³

Note—All payments for School and Asylum Lands must be made to the State Treasurer, and not be sent to this office.

Counter 18805



J. EARL RUDDER
COMMISSIONER
GENERAL LAND OFFICE
AUSTIN 14, TEXAS

Coleman SK File
No 48

around E. Mudd sur.
on Colorado R.

County 18846

John W. Parker,
Attorney at Law,
Taylor, Texas.



48-
Coleman Co
Sketches

Hon. George W. Finger,
Commissioner Gen. Land Office,
Austin,
Texas

San Antonio 18807

Rec'd 4/11/99
Robison



Filed in the General Land
Office Febr. 17th 1894.

H. G. 1893
Chief Clerk.

State of Texas, ()
County of Coleman. ()

Know all men by these presents that in Nov. 1893, I, W. T. Knox, County Surveyor of Coleman County, Texas, made investigations of the river surveys and Coleman County School Land survey No. 90 which runnings and connections then made are of record in my office in Book "A" 1 pages 279, 280, 281, 282 and 283, and a copy of same was filed in the Genl. Land Office at Austin, Texas. The commissioners court not being fully satisfied, deemed it advisable to make still further investigations of said surveys and that two surveyors be employed to go upon the ground and do the work jointly and make a report of their work to said commissioners court.

N. B. Davidson surveyor, was selected to assist me in making further investigations, and in compliance with same on the 3d day of January 1894 in company with said N. B. Davidson surveyor, J. E. Simmons and J. H. Coleman as chain carriers, both duly sworn, we began on west line of the John D. Claiborne survey No. 358 at a st. md. and Iron pipe, the N. E. corner of survey No. 196 in name of Louis Julienne, whence a L. O. brs. N. 37 E. 57 vrs. Thence N. (var. 9-5) at 140 vrs. cross branch 1624 vrs. to a point in W. line of said No. 358. -- Thence E. at 1030 vrs. cross brach 1160 vrs. to a point north of where river makes a bend and runs nearly due S. 1425 vrs. complement for E. line No. 358. -- Thence S. 260 vrs. to N bank of river (in locality of nothing but mesquite timber) but find no evidence of corner, (river at this point brs. N. 60 E. and S. 42 W.).

Return to point N. 260 vrs. from river and continue E. at 1740 vrs. E. bluff of branch, at 1950 vrs. a point N. 136 vrs. a stone md. made for the S. E. corner of said No. 358 and described in my report made to the Genl. Land Office in November 1893. This corner is N. 124 vrs. and E. 510 vrs. of the point where we run to river on complement as above described of said No. 358. Thence E. 915 vrs. Thence S. 738 vrs. bluff of river and mesquite timber but no evidence of corner. Thence E. 510 vrs., Thence S. at 444 vrs. pass over a stone md. made for S. E. cor. of sur. No. 359, 510 vrs. to a point on bluff in a L. O. mott. Thence E. 915 vrs. Thence S. 380 vrs. to bluff on N. bank of river, whence two L. O. trees bear N. 15 vrs. (line passing between them) Thence E. 510 vrs. Thence S. at 110 vrs. N. bank of slough, 180 vrs. center of slough, 225 vrs. to bank of river 2 vrs. W. of two hackberry trees, marked X for the S. E. cor. No. 360 and S. W. cor. No. 361 and described in my above mentioned report. Return to line N. 225 vrs. of river; thence E. 170 vrs. W. bank of Bull Creek, 195 vrs. center of Bull Creek, 915 vrs. complement for this line. Thence S. 330 vrs. to bluff on N. bank of river, 9 vrs. E. of what appears to be an old stone md. from which an old mesquite and an elm suit very well for bearings at this corner, but find no mark indicating that they were the trees. Thence E. 510 vrs. Thence S. 120 vrs. bluff on river. Thence E. almost parallel with river 420 vrs. to where it changes its course to the S. E., 915 vrs. complement for this line. Thence S. 240 vrs. to bluff of river, (making this point 2160 vrs. S. of corresponding S. W. cor.) Thence E. 510 vrs. Thence S. at 122 vrs. pass E. 150 vrs. of corner made by Evans for S. E. cor. No. 362, 200 vrs. N. bank of river (this point is 150 vrs. E. and 79 vrs. S. of Evans corner). Return 73 vrs. N. of river; thence E. 200 vrs. cross branch 380 vrs. N. bluff of river, 410 vrs. cross mouth of branch making into river, 470 vrs. to a point on edge of bluff, following near edge of bluff and at 685 vrs. cross another branch where the river makes another bend to the S. E., 915 vrs. complement for

this line. Thence S. 300 vrs. bluff on river (elm and mesquite timber at this place). Thence E at 341 vrs. cross E. line of sur. No. 363 as run by J. T. Evans, 510 vrs. complement for this line. Thence S. 242 vrs. to bluff on river about 30 vrs. from waters edge, & river runs almost east and west at this point) making this corner S. 44 vrs. and E. 169 vrs. of Evans' corner, (L. Oaks are marked here for bearings). Return to point N. 242 vrs. from bluff on river. Thence E. 915 vrs. complement for this line; thence S. 204 vrs. top of hill, 280 vrs. base of hill and edge of valley, 380 vrs. bluff of river. Return to point N. 176 vrs. from river thence E. 510 vrs.; thence S., at 426 vrs. pass over an old stone rd. 470 vrs. bluff of river. Thence E. 915 vrs.; thence S. 546 vrs. to bluff on river in a bend near where the river turns in a N. E. direction. Return N. 133 vrs. from river bluff; thence E. 141 vrs. to a point W. 20 vrs. of river bluff; thence N. 157 vrs.; thence E. 124 vrs. to a point W. 20 vrs. of river bluff; thence N. 265 vrs.; thence E. 214 vrs. river bluff; thence N. 37 vrs.; thence E. 31 vrs. to river bluff, complement for this line. Thence N. 340 vrs. cross branch where it makes a bend, 362 vrs. S. bank of same branch, 900 vrs. N. bank of same, 960 vrs. to a point on this line. Thence E. at 700 vrs. river makes a bend, (course E. & S. W.) 915 vrs. point on high bluff of river and complement for this line. Thence E. at 90 vrs. pass N. 9 vrs. of stone mound made by T. C. Moore, at 150 vrs. pass N. 14 vrs. of stone mound made by J. A. McElrath, locating this corner from the S. E. cor. of the L. T. Pease survey No. 369, going west, 510 vrs. complement for this line; thence S. at 1860 vrs. pass between two L. O. trees in Pet Rhea's field and about 275 vrs. E. of bend in river where its course down the river is S. 41 W. and up the river is N. 8 W., 3240 vrs. to river bluff in L. O. mott (river runs nearly east at this point); thence E. 915 vrs.; thence S. 298 vrs. to a point about 100 vrs. N. from waters edge, (timber, elm, hackberry and china). Thence E. 510 vrs. to a point N. 10 vrs. of river bluff and about 120 vrs. N. of waters edge, complement for this line. Thence E. almost parallel with river about 400 vrs. where river makes a bend to S. E. course, 915 vrs. complement for this line. Thence S. 350 vrs. to bluff of river; thence E. 510 vrs. complement for this E. line No. 363. Thence S. 234 vrs. to river bluff, (course N. E.) Return to point 234 vrs. N. of river bluff; thence N. 2534 vrs.; thence W. 317 vrs. to W. line of No. 369 and E. line No. 363 as located from S. E. cor. of No. 369. This point is S. 24 4-5 vrs. and E. 1425 vrs. from said S. E. cor. of said No. 369. Continue W. 510 vrs. in all. Thence N. at 3269 vrs. pass W. 339 vrs. of Evans' corner for N. E. cor. No. 363 and an L. corner of Coleman county school land sur. No. 90 and W. 232 vrs. of W. line of No. 369 as located from its S. E. cor. by myself and J. A. McElrath ex-county surveyor. Thence N. 273 vrs. further, complement for N. E. cor. No. 363 as per this line, at 945 vrs. further cross my line run in November 1893, of which I sent a report to Genl. Land Office at Austin, Texas, at 992 vrs. point 250 vrs. W. of W. line of said Pease survey as located from its S. E. corner and S. 87 vrs. from its N. W. corner. Thence W. and reverse the work that I did in November 1893 with the same result, of which record is made as before stated, with the exception of one extra series of lines 510 vrs. W. of those shown in the former work, back to the N. W. cor. of Simon Garcia survey No. 359.

Witness my hand this the 27th. day of Jan. 1894.

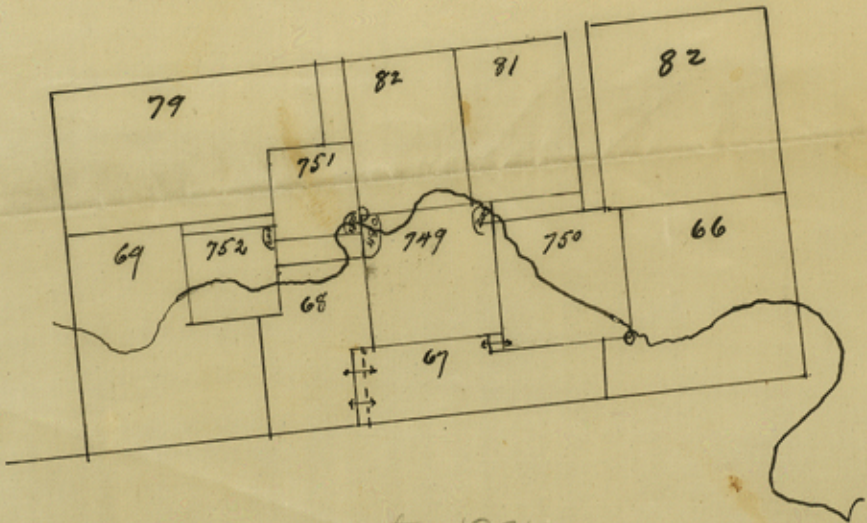
W. T. Knox, County Surveyor,
Coleman County, Texas.

D²
Counter
18809

W. T. Knox, County Surveyor

N. B. Davidson
I, N. B. Davidson, County Surveyor,
do hereby certify that this certificate
is recorded in Book 11, pages 284, 285, 286 & 287

Handwritten text at the top of the page, possibly a date or reference number, oriented upside down: 18810 1/2 1/2 1/2



Counter 18810

1379

John W. Parker,
Attorney at Law,
Taylor, Texas.

Taylor, Texas, April 12, 1899.

Hon. George W. Finger,
Commissioner General Land Office,
A u s t i n , T e x a s .

Dear Sir:--

Herewith please find letters to me from Mr. Baker, the former Land Commissioner, dated October 19 and November 28 of last year, relating to the Juan Armendaris survey and others in Coleman county, and certain sketches, which I send you according to an understanding I had with your chief examiner yesterday.

My purpose is to ascertain from the Land Office whether, after corrected field-notes of the Armendaris survey taking the same out of conflict with the W. J. Cannon survey have been filed, the quantity of land in the survey, whatever it may be, is subject to be patented.

I have conditionally sold the land and represented to the purchaser that the survey was in a condition to be patented according to the actual number of acres it contained, and told him I would get a statement to that effect from the Land Office. I felt warranted in making this promise in view of the letter dated November 28th from Mr. Baker, in which you will see he speaks of certain corrected field-notes having been filed conforming the Armendaris to the Cannon, and says: "On these corrected field-notes patent for the Armendaris will now issue, which I suppose is satisfactory to you, as I take it you had this correction made." After receiving the letter I ascertained the shortage in the Armendaris and did not ask for the issuance of patent. I would ask now for its issuance but for the fact that I have not yet definitely determined whether

John W. Parker,
Attorney at Law,
Taylor, Texas.

(2)

the survey is short or not, and do not wish to take out the patent until that question can be determined, as should I do so it would preclude me from claiming land outside of the particular boundaries which would have to be set forth in the patent.

An early reply will greatly oblige,

Yours truly,

(Enc.)

J. W. Parker

*Copy
to
J. W. Parker
Taylor, Texas*