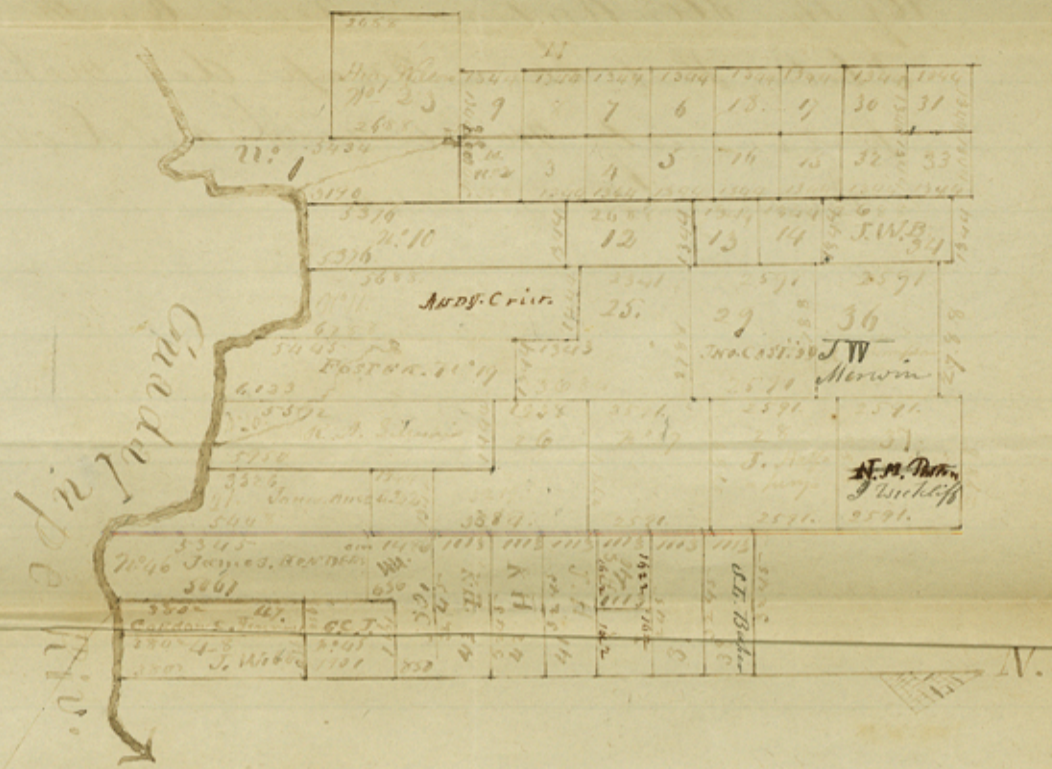


# Travis District

N: 2



I, Wm. S. Wallace, County Surveyor of the County of Travis, do certify that the foregoing map is a true representation of the surveys made by me, as also the Commission of the same with the upper crossing of the San Antonio Road on the Guadalupe River and that I believe that said map does not conflict with any surveys previously made in Travis County.

January the 13<sup>th</sup> 1846.

W. S. Wallace.  
C. S. P. C.

Copy from the book.  
C. S. P. C.

Reference.

15877 52.257 road

Names of Persons	Acres	Quantity
Madison Miller	2	320A
Madison Miller	3	320
David Ayres	10	320
David Ayres	11	320
David Ayres	33	320
David Ayres	32	320
John Mc Christian	22	320
W. B. Flint	10	320
Logan Vandiver	9	320
Logan Vandiver	8	320
J. B. Smith	31	320
King Holstein	7	320
King Holstein	6	320
N. L. Geo. Allen	14	320
Fitch & Hunt	5	320
Fitch & Hunt	17	320
Fitch & Hunt	30	320
A. Lusk	16	320
A. Lusk	15	320
	74	320

I William S. Wallace County Surveyor for The County of Travis do Certify  
 that the foregoing Map is a true Representation of the Surveys made  
 by me, as also the Connection of the same with the upper Crossing  
 of the San Antonio Road on the Guadalupe River. And that  
 I believe that said Map does not conflict with any Surveys  
 previously made in Travis County  
 January the 13<sup>th</sup> 1846

W. S. Wallace  
 C. S. & C  
 [Signature]

John C. ...  
 Surveyor for the  
 State of Texas  
 by the S. Wallace  
 [Signature]

File 1.

Travis District  
 Surveys on the Westside of  
 Guadalupe made by  
 W. S. Wallace  
 Plotted on map

Comal County