

0182

(John Poole)

HUGH L. GEORGE ASSOCIATES

OFFICE PHONE 655-5112
1607 South Park Street

SAN ANGELO, TEXAS

Commissioner,
General Land Office,
Austin, Texas.

(School File 43267)
Sketch File 51

RECEIVED

JUN 11 1971

General Land Office

Dear Sir,

This letter is a report on a survey made by this firm for the purpose of patenting of the West 1/2 Survey 74, Block 8, H. & T.C. R.R. Co., Concho County Texas.

The control of the North-South position was made by locating the patented corners of the East lines of surveys 61 and 62 of this Block, and due to the lack of original corners of the lines of Surveys 73 and 74, this Block, projecting by course, East from the identifiable Patent Corners of the East line of said surveys 61 and 62, Thus establishing the North and South lines of this survey #74.

The West line was established by projecting to the South from a point in the Center line of a public Road, in line with a N-S fence on the West line of said survey 73. The N.E. corner of said survey 73 is in the center of a County Road, in line with a fence on the East line line of said survey 73, in the center of a road to the North on the East line of survey #72. Please note that the distance on the North lines of surveys 73 and 68 is each 1904.5 varas.

The East line of the West 1/2 survey 74 and the patented West line of the East 1/2 Survey 74 is a fence. George Bunger states that this line was established on the ground by a surveyor (unable to remember the name) in the year 1913. This line must have been carefully located, for you will note that the distances of the South line of the East and West 1/2 are equal, 952.25 varas.

In a sense, the East line of this West 1/2 survey 74 may at first seen to be based on occupation; however, the prepondence of accurate surveys made in 1913 as attested by the position of the fences in this area as to proration of distances and courses, bear out the correct position of these surveys.

Probably, at the time of the survey for fences in 1913, the Original corner that is called for at the S.E. corner of said survey 74 was identifiable. This corner has been destroyed at this time. The S.E. corner of survey 74 is a plowed field.

Sincerely,

John P. Poole

John P. Poole

Counter 19218

THE STATE OF TEXAS,
COUNTY OF CONCHO

I, Lucille Hill, Clerk of the County Court of Said County, do hereby certify that the above

instrument of writing with its certificate of authentication was filed in this office this 7 day of June

A. D., 19 71, at 9 o'clock A. M., and duly recorded the 7 day of June

A. D., 19 71, at 10 o'clock A. M., in the Surveyors

Records of said County, in Vol. F on Pages 271

Witness my hand and seal of the County Court of said County at office in Paint Rock, the day and year last above written.

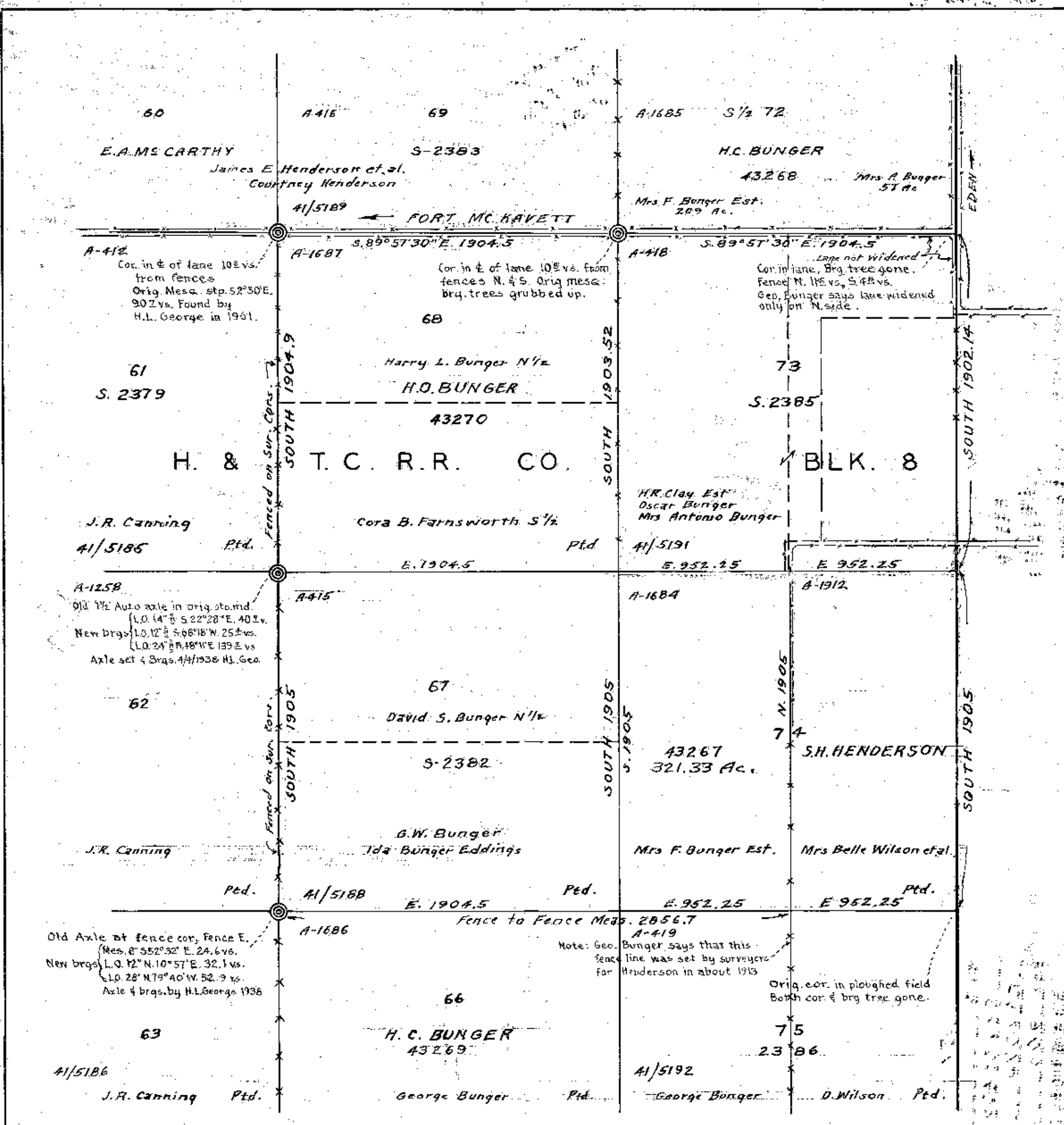
By Clara Nell Meisner Lucille Hill
Deputy Clerk County Court, Concho County, Texas

FILED
The 7 Day of June 19 71
At 9:00 o'clock A. M.
Lucille Hill
County Clerk Concho Co., Tex.
By Clara Nell Meisner
Deputy

File No. 51
CONCHO County
Sketch File
Filed Sept 17 1971
BOB ARMSTRONG, Com'r
By [Signature]

Re: W 1/2 Sec. 72
H. & T. C. Ry., Blk. 8
By John P. Poole
Apr. 26, 1971

D187



CONCHO CO. TEX.

RE: THE W 1/2 74, H. & T. C. R. R., BLOCK 8

SCALE 1" = 500 VARAS

S. 50° W. ABOUT 9 MILES FROM EDEN
S. 7° W. ABOUT 25 MILES FROM PAINT ROCK

Surveyor's Certificate:
I, John P. Poole, a Licensed State Land Surveyor of Texas, do hereby certify that the hereon map correctly shows a survey made by me, or under my direction, on the ground April 1970, 1971.

Witness my hand this 26th day of April, 1971.

John P. Poole
H.L. George Associates, 1607 S. Park St., San Angelo, Texas, 76901, Tel. 655-5112



The Day of June 19 71
At Concho, Texas
County Clerk
Concho

SKETCH FILE NO. 51
COUNTY CONCHO