

File No. Sketch File 52  
 Sur. Nos. 1745, 46, 47 & 48 County Concho  
 Filed June 29 From 3-3-2076  
 By GARRY MAURO, Com'r 19 53  
(Howard)

**CONCHO CO.**  
 SCALE 1" = 300' vs.

RECEIVED  
 JUN 29 1953  
 REFERRED TO SCHOOL

I, John P. Poole a Licensed State Land Surveyor of Texas, do hereby certify that the hereon map correctly shows a survey made by me on the ground. Witness my hand this 27th day of June, 1953.

*John P. Poole*  
 John P. Poole

Counter 19220

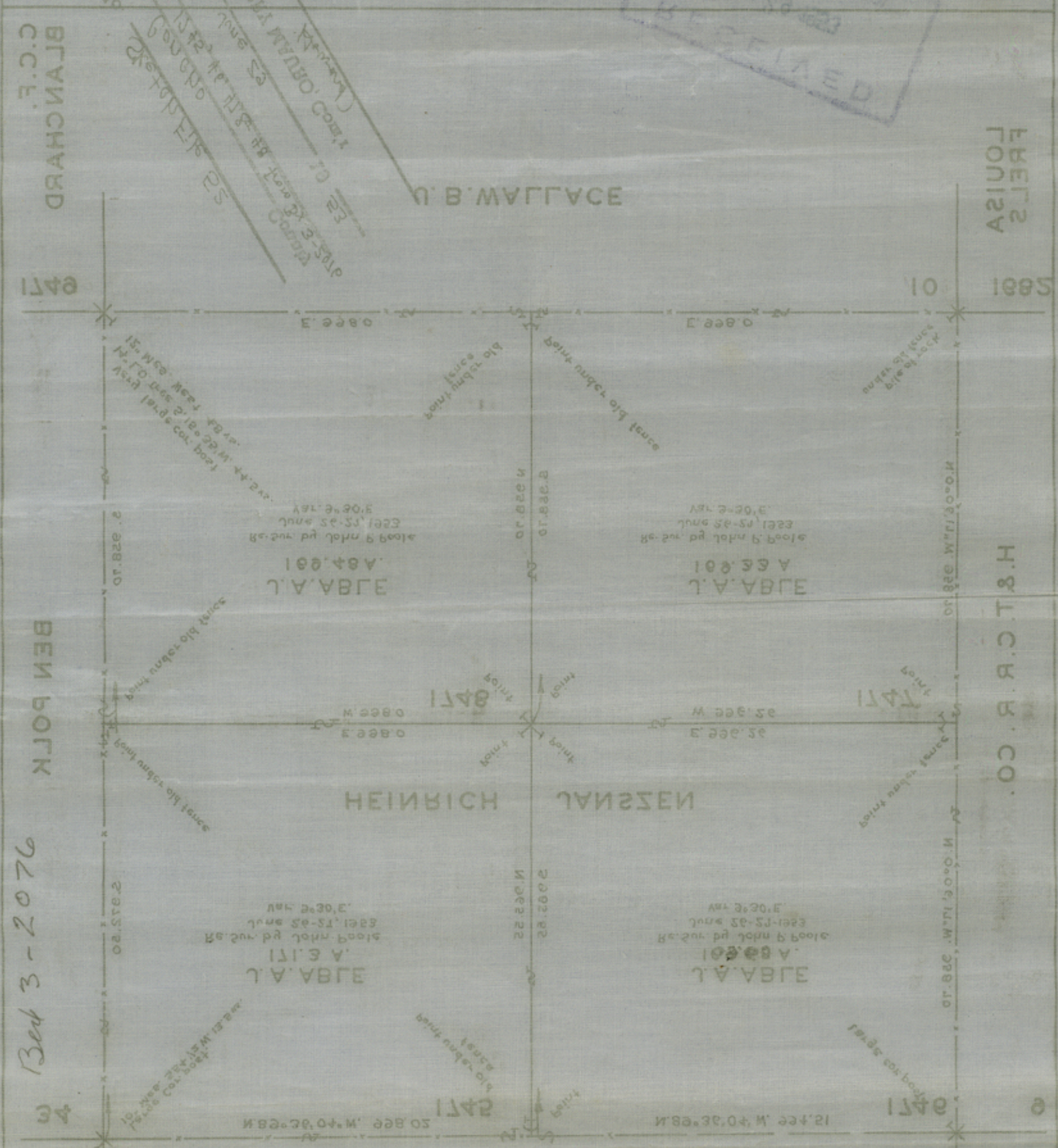
Witness my hand this 21st day of June, 1953.  
 Being left on me and being having a sworn affidavit  
 person that I have a licensed land surveyor of Texas do hereby certify that the person

*John P. Poole*  
 Surveyor

RECORDED  
 JUN 28 1953  
 COUNTY CLERK

SCALE 1" = 300' 1/2"  
 CONCHO CO

J. B. WAGGACE



Bed 3-2076

Concho COUNTY ROLLED SKETCH NO. 19  
Surveys No 1745, 46, 47 and 1748  
 SURVEYED June 26, 27-1953 BY John P. Poole  
 from Bex 3-2076  
 FILED Jun 29, 1953  
 Counter 19221