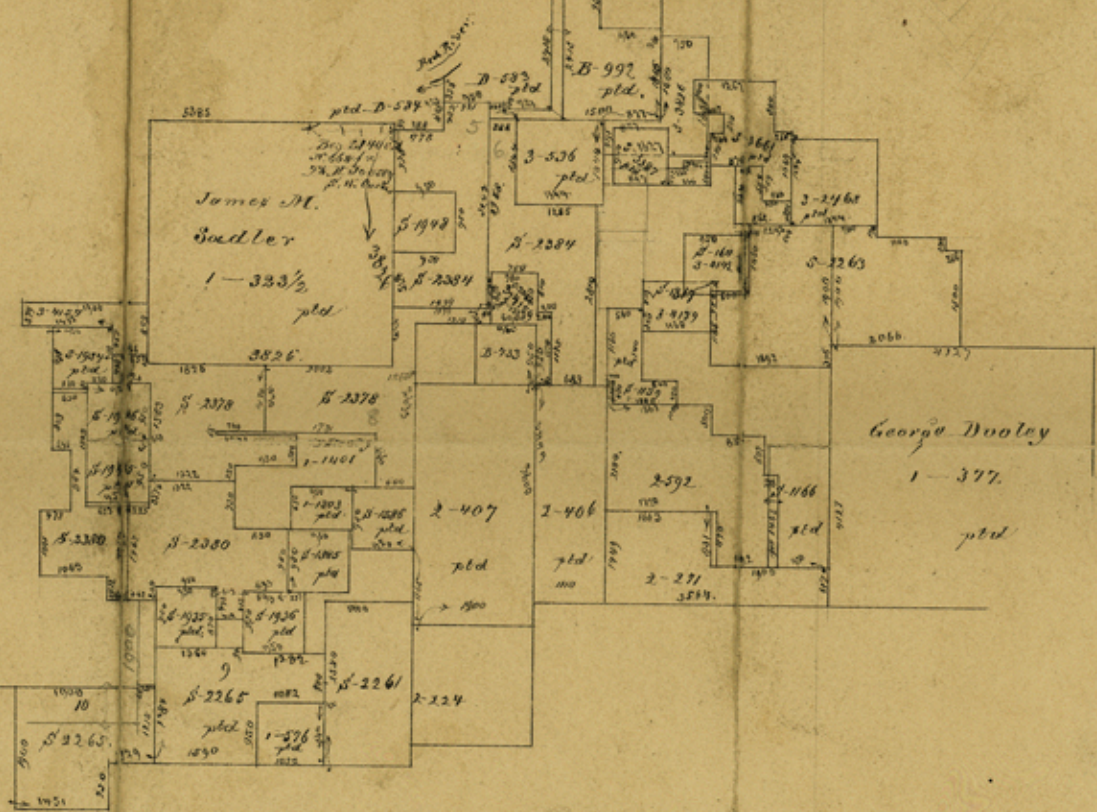


3000 vs to the inch



Counters 19267

Cooke County

File 22

Fish Creek

Plotted in office

9-26-70

Counter 19268

Here by Certify that this SP
 James Bradshaw and C.F.
 are they Relation position on
 as I have found by actual
 and as shown by Cor. 06. Field Notes of
 SP R Co Surveys

Witness my official Signature at
 Springfield, Mo. June 11th 1871
 W. S. P. AD. 1871. G. H. Ray, Secy., C. O. C. C.
 Note: The Club Survey by Smith of Clark Co. Mo. is
 & East of it on my Office.

Feb shows the
 by Surveys
 the ground
 actual measurement,
 Field Notes of

Counter 19269

James M. Sadler



Copy of 1871 Map of 40