

R. D. MORRIS,

County Surveyor Cooke County, Texas.

Gainesville, Texas, 188

1ST
Book E 29

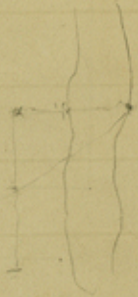
Sketch for (29)

Jan 5 4 14 25

D. 2126.

S. 311 66.

29





Columbiana 19 miles. →

Sketch in Cooke County. Scale 2000 yards to 1 inch

No. 29
Cooke Co.

The State of Texas,
County of Cooke,

I G. H. Ragsdale, County Surveyor of
Cooke County do hereby certify that the
2 J. A. Moon Surveys, the 2 S. L. & M. G. R. R.
Co. Surveys, the Ramon Travino Survey and
E. W. Cullen Survey, showed on this sketch
are from actual Survey and measurement on
the ground and I further certify that the
Course and distance of the lines of adjoining
and connecting Surveys, is given in this sketch
and corresponding Field Notes, as I have found
by connecting the well established corners of
said adjoining Surveys, by straight lines.

I also certify that the E. W. Cullen Survey is
bounded by previous Surveys.

In testimony whereof I hereunto affix
my Official Signature, at Office in the
town of Fairbault, this January 30th 1873,

G. H. Ragsdale.

C. S. C. C.

Note, This sketch is in explanation of E. W. Cullen Survey.
The field notes have been returned. The certificate is
in File, 1234, Faucim. Donation,

(over)

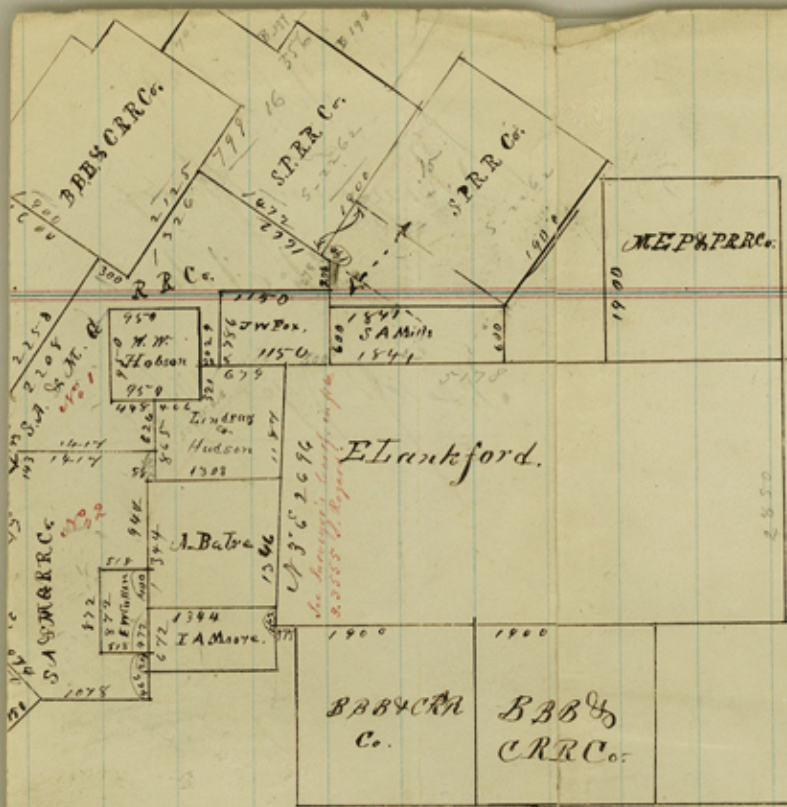
Counter 19286

File 29 (3pcs)

- 1 - SK of DC Wilson 640^a Sur,
- 2 - Leaf of Wrapper, Contents Missing-
- 3 - SK showing E Lankford & surround-
-ing surveys-

Cooke County

Courtesy 19287



1/2000 is to Link. Cooke Co. July 15th 1872.

I, Surveyor of the County of Cooke, Texas, do hereby certify that this sketch shows the errors in their true position on the record, as I have found from actual survey and measurement, and in testimony of surety I hereunto set my official signature at Office Gainesville, this July 15th 1872.

G. H. Wagdale,
 Co. S. C. Co.

Number 19289

~~File 3639~~

~~Fossil in Paris
Sketch~~

~~Found Sept 27/72~~

Sketch also shows some quarry
in the locality

See also in book No 6
with Cooke + Thompson

See page 2/30.

Thompson's No 1 & 2

and Certificate to
Thompson's sketch

Cooke Co.
File No 29 (3)

Cooke County.

File No. 29.

(2)

Surveyor's Sketch and
Certificate, and
plot of Office.

Jan'y. 2/73.

2 surveys of Indianola Rail.
Road Comp. in the S. W.
part of Cooke Co.

Counter 19290