

N^o 31.

COOKE County.

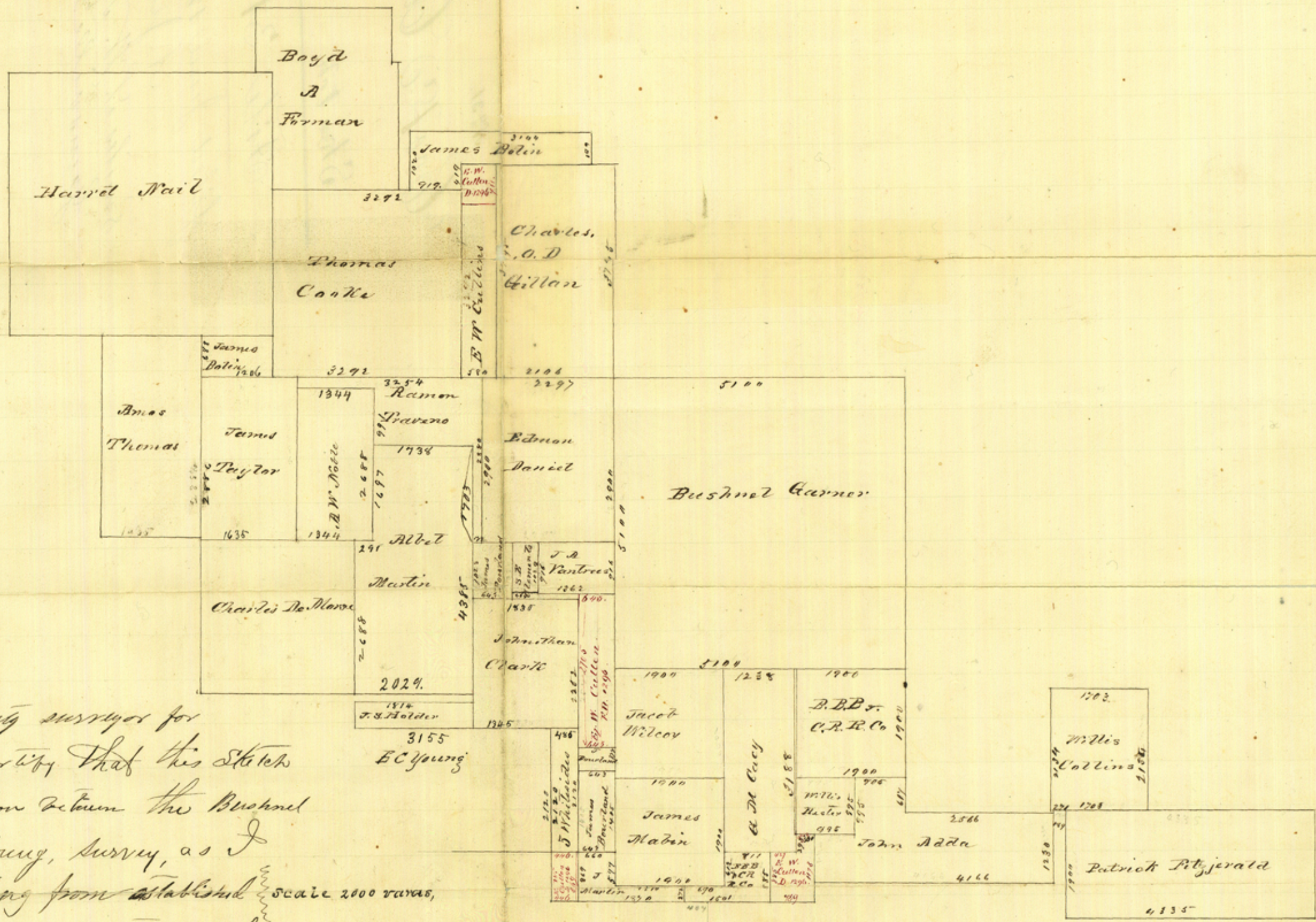
Sketch

File 31.

filed June 15. '73.
A. Jewell.

Smiths L. W. & P.
Gainsville

Carroll 19293



The State of Texas,
County of Cooke,

I G. H. Ragsdale County surveyor for
Cooke County, do hereby certify that this sketch
shows a definite connection between the Bushnel
Garner, and the H. C. Young, survey, as I
was found by measuring from established corners on Spring Creek, to established
corners on the E.C. Young Survey, running at
a variation of $10\frac{1}{2}' E$ which is given by the marked
line on Spring creek, and there being no record of
any other variation. In testimony whereof I hereunto affix
my hand at Office this May 31st 1878. G. H. Ragsdale,
County Surveyor