



General Land Office.

State of Texas.

Austin.

JOHN J. TERRELL, COMMISSIONER.
J. T. ROBISON, CHIEF CLERK.

February 2nd 1906.

Capt. R. M. Kenney

Clinton, Okla.

Dear Sir:-

Your favor of the 20th ult, duly received. In regard to correcting and returning new field notes for the surveys in block M, made for R. M. Thomson, and block E, for Matador Cattle Co; just east of the Stephens block in Cottle county. From the records I find that the A. Forsyth block B, was surveyed May 1st 1882 by P. Toberman, depty, and approved by D. H. Jones.

Surveys 1 to 8, J. H. Stephens were made May 19th 1882 by D. H. Jones; surveys 5 to 8, inclusive calling for the Forsyth section on its east, and surveys 8, 9 and ²⁴ call for the W. & N. W. Ry. Co; surveys on ~~it~~ its north, describing bearing trees &c.

R. M. Thomson block M, was surveyed August 24th to 26th 1882 by W. A. Jones; survey #5 calls for J. H. Stephens surveys 4, 5, and 6.

Block E, surveyed for Matador Cattle Co; by D. H. Jones October 12th and 13th 1882, calling for the Stephens and Thomson surveys.

From the above facts it is doubtful if a vacancy could be recognized; nor could they be separated.

In regard to distributing the excess in the several surveys between original corners and the calls for each other, is left entirely with you; as you are on the ground and being familiar with the different surveyor's work.

Enclosed find blue print copies of original sketches, returned with the field notes of the several blocks. They may be of some use.

Respectfully,

Enc.
E. von R-Gk.

Commissioner.

From the above facts it is doubtful if they could be separated and a vacancy recognized.

Counter 19436

892

Matador Texas June 6 th. 1904.

Hon. J. J. Terrell Comr.

Austin Texas.

Dear Sir.

Some time since your office furnished me with a blue print showing a vacancy opened up by J. W. Carroll, sur. of Cottle County between Block M. R. M. Thomson and block E. M. C. Co. and filed on by J. S. Harris and P. e. Fosdick. If you will examine Mr. Carroll's map and then the original, you will find the field notes of survey # 2 Block E. at its N. E. corner call for the rock mound at the S. E. 3. Block M. and this corner according to Mr. Carroll, s report is found on the ground.

Now in the absence of any other corner found at the N. E. of # 2 Block E. I do not see by what rule or law of surveying you can separate the two surveys. Then if you recognize this old corner at the S. E. of 3. Block M. as the N. E. of 2 Block E. that makes all the lines and corners of surveys 6.7.8. & 10 Block M. and 5.6.7. & 8. Block E. common lines and corners. In other words I take the position that this vacancy does not exist. I am going shortly to that part of the country to work and I will be obliged to you if you if you will pass on this matter at once and give me instructions how to adjust these surveys.

Very Truly Yours

R. M. Kenney
State Sur.

299

Wash D.C. June 10, 1904.

Hon. J. J. Carroll, Comr.

Wash D.C.

Dear Sir,

Some time since your office furnished me with a line plan

showing a section of land on the J. J. Carroll map of Collier County between

the J. J. Carroll and the J. J. Carroll maps.

Now in the absence of any other corner found at the N.W. cor. of 1 &

according to Mr. Carroll's report is found on the ground.

corner call for the rock mound at the S.E. 3/4 block M. and this corner

original, you will find the field notes of survey N. 2 Block S. at the S.E.

and J. J. Carroll. If you will examine Mr. Carroll's map you will find the

block S. E. I do not see by that rule or law of surveying for any

how in the absence of any other corner found at the N.W. cor. of 1 &

according to Mr. Carroll's report is found on the ground.

corner call for the rock mound at the S.E. 3/4 block M. and this corner

original, you will find the field notes of survey N. 2 Block S. at the S.E.

and J. J. Carroll. If you will examine Mr. Carroll's map you will find the

block S. E. I do not see by that rule or law of surveying for any

how in the absence of any other corner found at the N.W. cor. of 1 &

according to Mr. Carroll's report is found on the ground.

corner call for the rock mound at the S.E. 3/4 block M. and this corner

original, you will find the field notes of survey N. 2 Block S. at the S.E.

and J. J. Carroll. If you will examine Mr. Carroll's map you will find the

block S. E. I do not see by that rule or law of surveying for any

how in the absence of any other corner found at the N.W. cor. of 1 &

according to Mr. Carroll's report is found on the ground.

corner call for the rock mound at the S.E. 3/4 block M. and this corner

original, you will find the field notes of survey N. 2 Block S. at the S.E.

and J. J. Carroll. If you will examine Mr. Carroll's map you will find the

*Ewing:
Put a.s. in
535406*

*Hutch
10/3/04*

Very truly yours

H. J. Carroll

H. J. Carroll

Counter 19438

collec. St. File #E

993

Clinton, O.T. 1,20, 06.

Hon. J.J.Terrell, Comr.

Austin, Texas.

Dear Sir:-

After writing to you about the J.H.Stephens Block, in Cottle County, and inclosing a sketch of said Block, as I find the old corners on the ground, I have taken up the work in blocks E. & M. just East of the Stephens. Some time ago I sent you a connecting line from the S.E. corner of #18 Block E. to the N.E. #7 Block M. R.M.Thomson. Thence N. & E to the N.E. #1 Block M. From the S.E. #18 to the N.E. #7 there is an excess of 190 vrs., and you will see from J.W.Carroll's report of June 25, 1903, that he makes an opening between these Blocks, locating two surveys in name of J.S.Harris and P.E.Fosdick. This strip you instructed me to close up and hold the two Blocks together.

The field notes of #1 Block E. and #5 Block M/ call for each other, and both call for the N.E. #4 J.H.Stephens. As there are no original corners on the East line of the Stephens, I believe the S.E. of #5 of the Stephens Block should be located by the S.W. # 5Block M. Thomson, and distribute the excess in the Stephens Block from the S.E. #1 to the S.E. #5, and make the same distribution in Block E. from the S.W. #15 to the N.W. #1, which is also the S.W. #5 Block M.

The N.W. # 5 R.M. Thomson is located due West from the N.E. #1, the Owl Springs corner, and this will locate the N.E. #5 J.H.Stephens. I would then distribute the balance of the excess in Northing that shows between the N.E. of #5 and N.W. # 73, J.H.Stephens. This would make no difference in the outline of the Stephens Block, merely a change in the distribution of the excess in Northing.

It is my recollection that these three Blocks were located by the same surveyor, D.H.Jones, and if I am correct, we would be justifiable in locating his work on the East line of the Stephens, in the absence of original corners, from his corners in Block M.

See Carroll's map, dated June, 25, 1903. Please let me hear from you and I will make out corrected notes for these Blocks.

Very truly yours,

R.M. Kenney

recd 2/2/06

See carbon copy.



General Land Office,

State of Texas,

Austin.

June 15, 1904.

JOHN J. TERRELL, COMMISSIONER.
J. T. ROBISON, CHIEF CLERK.

Capt. R. M. Kenney,
State Surveyor,
Matador, Texas.

Dear Sir:

Your favor of 6th inst. to hand. In reply will say that according to the calls in the field notes of surveys 1, 2, 4, to 8 inclusive in block E, calling for surveys 5, 4, 3, 6 to 10, block M, ~~no vacancy can be admitted.~~ Should there be an excess, it would be on the South line of surveys 3 to 8, block E, and be a part of said sections. In other words the surveys in block E, as patented, call to begin on block M, and thence south to the corners as described in the several patents. For explanation see rough pencil sketch herewith.

I would suggest that corrected field notes be filed for the several surveys as to including the excess, and the abstract be corrected accordingly. The county assessor could then assess each survey its proper area.

Very respectfully,

E. von Rosenberg -Ewing.

Commissioner.

Counter 19440

726

In the files - BEK. J. B.
Motley County Tex.

Hon. J. T. Jernice Cour.
Austin Tex.

Dear Sir,

I will finish
BEK. J. B. in about ten
days - Will you please
suspend action - in the
Surrey made for Jack
Harris in Cottle Co -
between BEK. E. Matador
Cottle Co. and R. M. Thom-
pson BEK. - I will take the
matter up at once Yours Truly
R. M. Keeney
State Sen.

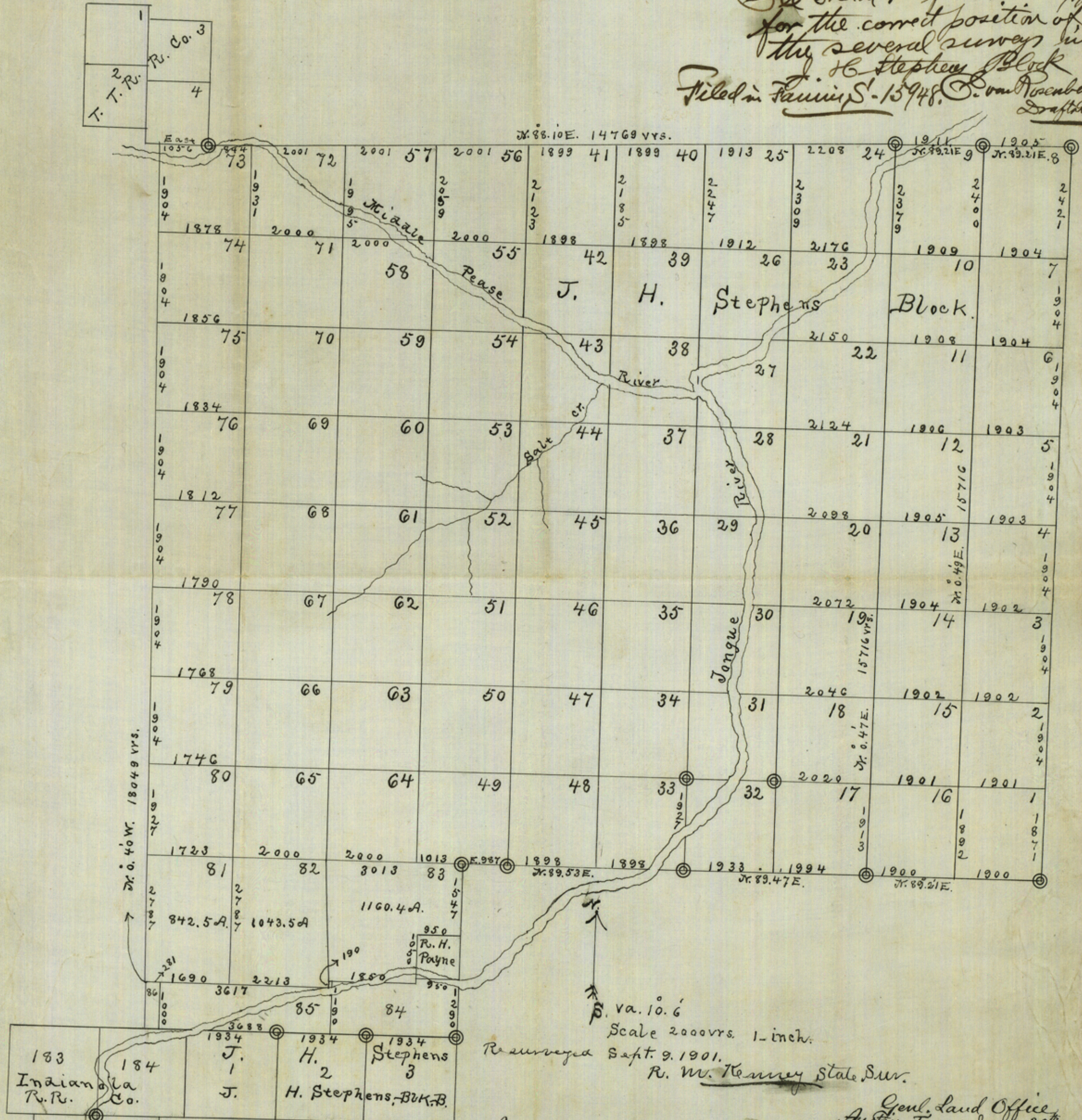
Cottle County
Sketch file "E".

Cottle County

Filed Jan. 15th 1906.

J. P. Robinson
Acting Commissioner.

See Sketch "F" filed March 16/1906
for the correct position of
the several surveys in
J. H. Stephens Block
Filed in Travis S-15948. C. von Rosenberg
Draftsman



Scale 2000 vrs. 1-inch.
Resurveyed Sept. 9, 1901.
R. W. Kenney State Sur.

Genl. Land Office,
Austin, Texas Jan. 20th 1906.

After a full investigation of the field notes of the
numerous patented surveys in the above block, together with
certified sketch and report marked "C", and field notes of connecting
line marked "A" both filed in Cottle county sketch file, returned by
State Surveyor R. W. Kenney, statement and decree of Federal Court March term
1901 in case of Matador Land & Cattle Co. vs. S. H. Goldston et al, on file in
S. F. 5576, I find that the above sketch correctly represents the relative position
of the several surveys, and as they should be recognized on the ground.

Approved Jan. 31st 1906.
John J. Schell
County L. L. Office

C. von Rosenberg
Examining Draftsman