

Cottle Co.<sup>th</sup>

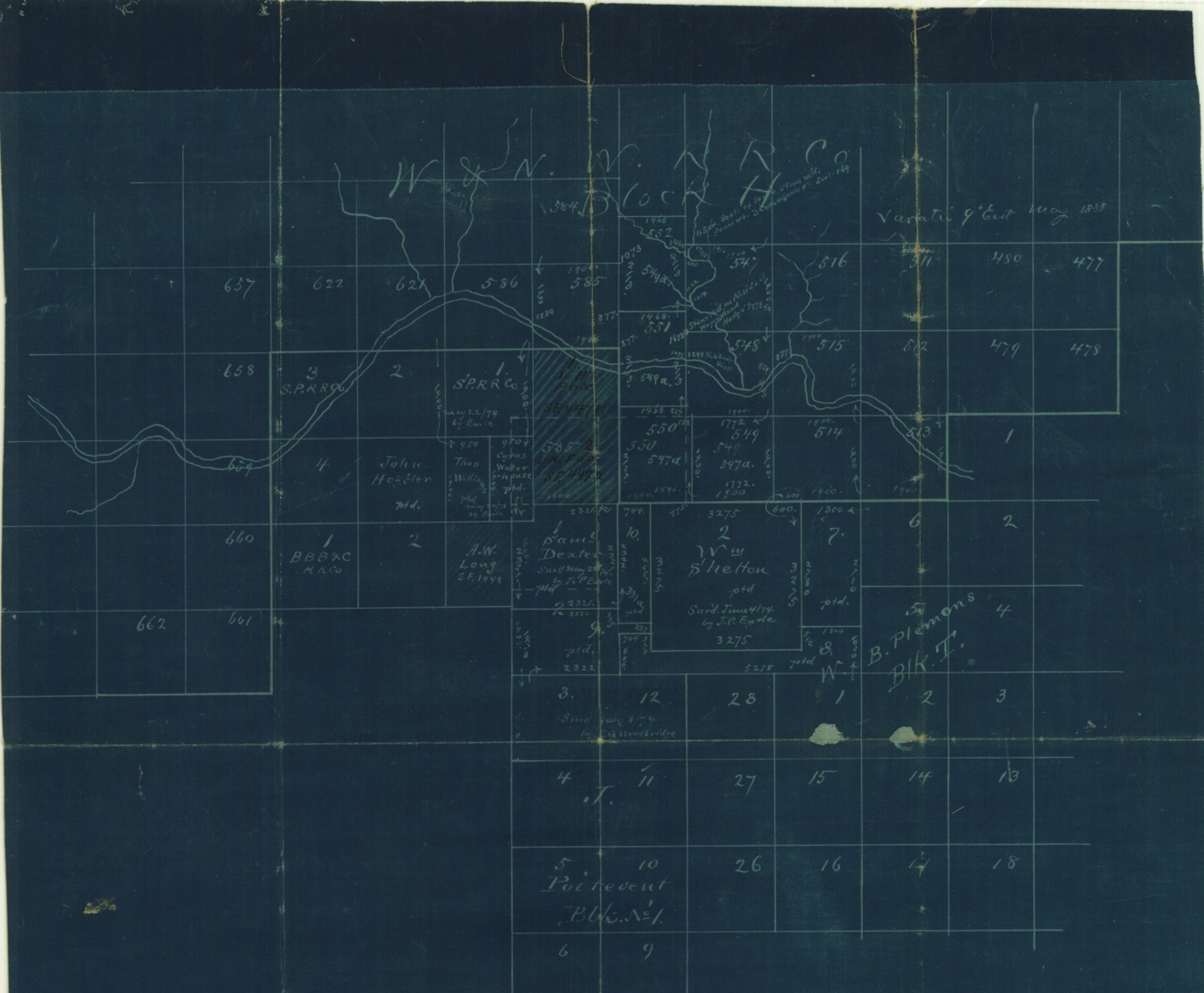
Sketch in N.E. part  
of Co. showing the  
slide or break in  
Blk. H, W & N.W. Ry Co.  
and representing the  
Saul Deater and  
Blk No 1, J. Poitevent  
correctly.

3/29/02

Edward R. Smith  
Examining Engineer

21

See Sk. no. 2



Constructed By E. von Rosenberg  
 Examined & approved  
 Genl. Land Office  
 March 21/02.

(Surveys 1 & 2 Blk 1 J. Poitevent  
 abandoned being in conflict with Paul Dexter)

See original sketches by State Surveyor Long for correction of H. Fox's block of surveys & c.  
 dated 19990

See Sketch no. 2  
 sketch files

28