

CRANE AND UPTON CO. SKETCH

Showing Connection
Between BLOCK X and BLOCK Y.



(15)

Sketch File No. "C-1"

Crane
Upton County
Robt. F. Estes' Sk.

Block X - Block Y. Connection

Filed September 16th 1925

J. H. Walker, Actg. Comm.
J. F. Robison

C. F. Blucher, File Clerk

Descriptive:

This is the day of September 1925.
 Office of State Surveyor
 also correctly shown. Records in Vol. 1 - page 129 in Surveyor's
 And the relative positions of Block X and Block Y. is
 forth that as they are on the ground.
 boundaries and corners are fully described and correctly
 made by me on the ground and according to law that the State
 Surveyor certify that the record as shown was made from a survey
 Robert F. Estes Licensed Land Surveyor, Midland County, Texas.

Robt. F. Estes

Licensed Land Surveyor Midland County, Texas

CRANE AND UPTON CO. COUNTY

Recorded variation used by original Surveyor, -12.28'
 10.38' plus 12.28' = 22.66'
 13.08' plus 12.28' = 25.36'
 bearing as follows:
 The variation is 28' - a variation of 13.08'
 used to fit the bearings and to make the course of the
 line 218.7' and 2.77'.

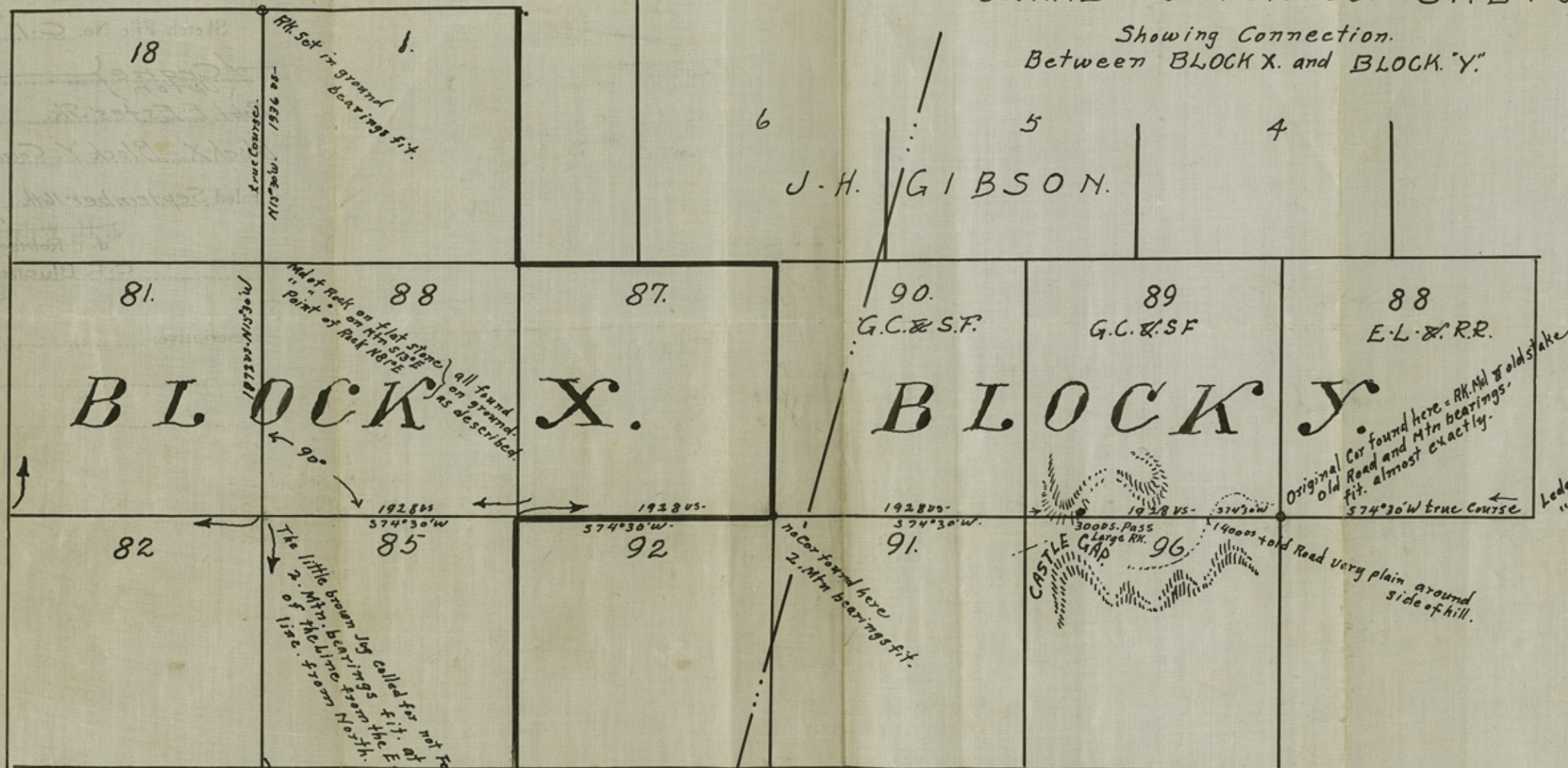
Counter 19579

CRANE AND UPTON Co. SKETCH

Showing Connection.
Between BLOCK X. and BLOCK Y.

J. H. GIBSON.

Sketch C
Filed 9-16-25



Explanatory Remarks, -

True Variation 10°35', - A variation of 13°05' is used to fit the bearings, and to make the course of the lines N.13°W. and S.77°W.

Balancing as follows, -

13°05' plus 13° = 26°05'

10°35' plus 15½° = 26°05'

Recorded variation used by original Surveyor, -12°28'
13°05' less 12°28' leaves 37' for annual change.

CRANE COUNTY
UPTON COUNTY

I, Robt E. Estes Licensed Land Surveyor, Midland County Texas do hereby certify that the hereon sketch was made from a survey made by me on the ground, and according to law, that the limits boundaries and corners, are truly described and correctly set forth, just as they are on the ground.

And the relative positions of Block X and Block Y. is also correctly shown. Recorded in 861. - 1 - page 429. in Surveyor's office of Ector County Texas.

This 12-th day of September 1925.

Robt. E. Estes

Licensed Land Surveyor Midland County, Texas.

Counter 19580