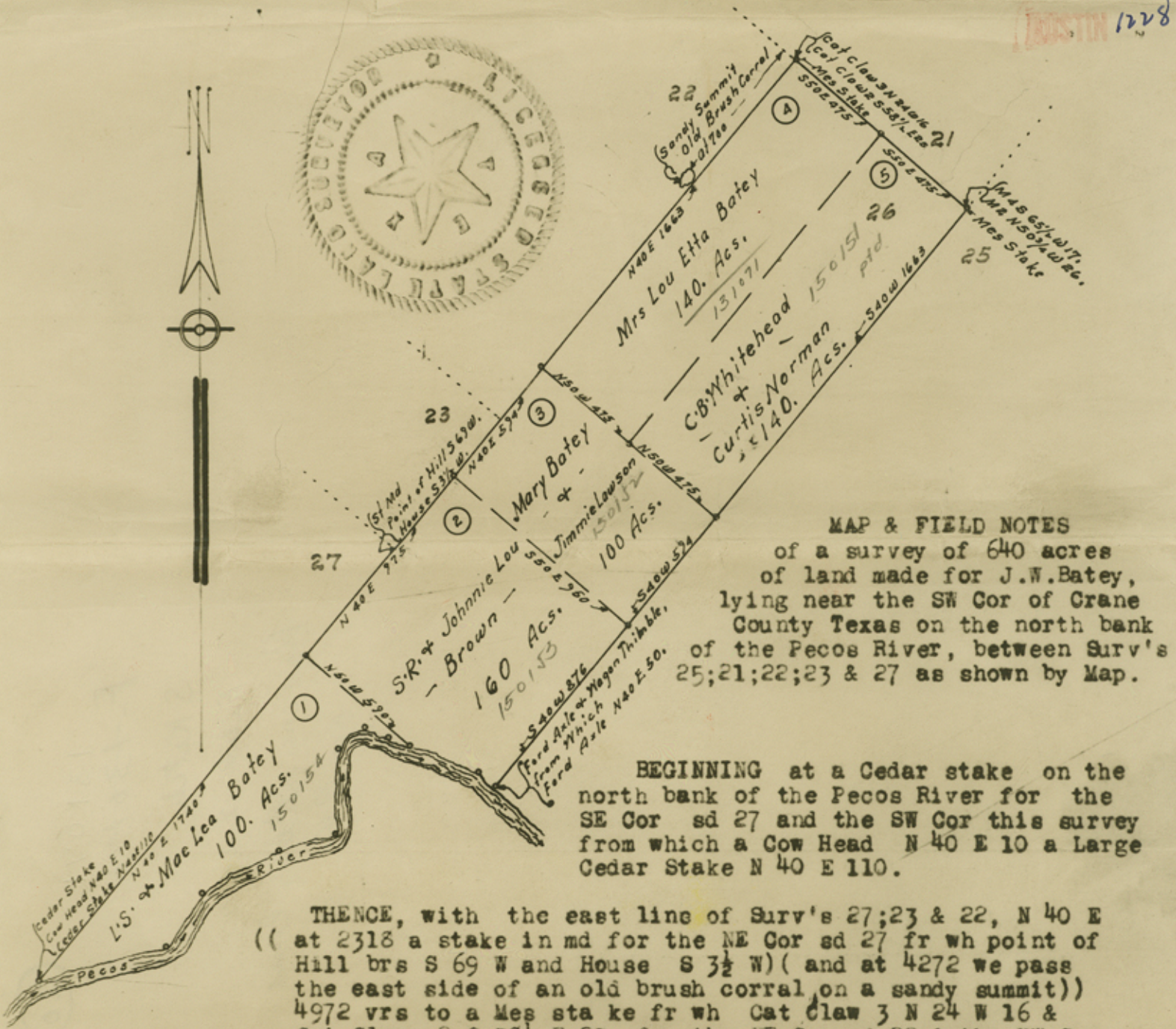


1228



MAP & FIELD NOTES
 of a survey of 640 acres
 of land made for J.W. Batey,
 lying near the SW Cor of Crane
 County Texas on the north bank
 of the Pecos River, between Surv's
 25; 21; 22; 23 & 27 as shown by Map.

BEGINNING at a Cedar stake on the
 north bank of the Pecos River for the
 SE Cor sd 27 and the SW Cor this survey
 from which a Cow Head N 40 E 10 a Large
 Cedar Stake N 40 E 110.

THENCE, with the east line of Surv's 27; 23 & 22, N 40 E
 ((at 2318 a stake in md for the NE Cor sd 27 fr wh point of
 Hill brs S 69 W and House S 3 1/2 W) (and at 4272 we pass
 the east side of an old brush corral, on a sandy summit))
 4972 vrs to a Mes stake fr wh Cat Claw 3 N 24 W 16 &
 Cat Claw 2 S 58 1/2 E 25, for the NE Cor sd 22 & the NW Cor
 this survey.

THENCE S 50 E 950 vrs to a Mes stake fr wh Mes 4 S 65 1/2 W 17 Mes
 2 N 50-45 W 26 vrs for the NE Cor this survey (and the NE Cor Block
 No 5) in the west line of sd Surv No 25.

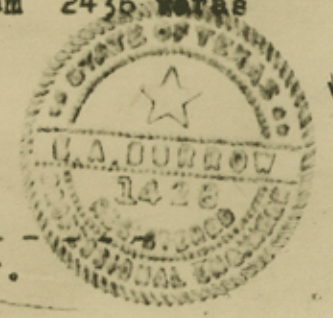
THENCE, with the west line of sd 25, S 40 W 3133 varas to a Ford
 Axle in the north bank of the Pecos River for the SW Cor sd 25
 and the SE Cor this survey fr wh, another, Ford Axle N 40 E 50.

THENCE, with the meanders of sd north bank, Up Stream 2436 varas
 to the place of **BEGINNING**.

Surveyed Oct 1926. Subdivided in June 1938.
 Bearings Marked X with - - above & - - below.
 J.W. Batey & H.L. Hairston- Chainmen.

E.A. Burrow State & County Surveyor.

Counter 19584



(20)

131071

F-130171

Sketch

Filed - 2-25-41

Bascom Liles, Com.
by R.W.

131071

Midland Texas,
July 12, 1928.

Hon. J. T. Robison, Commissioner Gen. Land Office,
Austin, Texas,

Dear Sir:

The following is a report of a survey showing the relative positions of The Texas & Pacific Block 44, Tsp. No. 3 South, Blocks B-16, Block B-22 and Block B-23 Public School Land and The University Block 35, situated in Crane and Ector Counties.

I started at the original N.E. corner of section 1. Block 44 Tsp. No. 3 South T.&P. surveys. Thence S. $75^{\circ}03'W$. (S.W. angle from East Block line $90^{\circ}15'$) six miles plus 42 vrs (11442 vrs) to a plunger coupling and rock mound placed by W.D. Twichell for the N.E. cor section 26 Blk. B-15, P.S. Land same being the S.W. cor of section 43 Blk. 44 Tsp No. 2 South T.&P. Ry Co.

Thence S. $13^{\circ}30'E$. at 850 vrs cross T.&P. rail road tracks, 1906 vrs pass S.W. cor section 6. Blk. 44 Tsp 3 South, 2042 vrs in all to the N.E. cor of section No. 1. Block B-16, Whence the N.W. cor of section No. 1. University Block 35 brs S. $15^{\circ}20'E$. 9.9 vrs

Thence S. $15^{\circ}20'E$, 3801.6 vrs to the N.E. cor of section 12. said Block B-16.

Thence S. $74^{\circ}40'W$. 2048 vrs to an iron pipe at the N.W. cor of section 12, said Blk. B-16.

Thence S. $74^{\circ}40'W$. 9504 vrs to the N.W. cor of sec 17. a rock mound for corner.

Thence S. $15^{\circ}20'E$. 1901 vrs to old stk and rock Mound, S.W. cor of section 17. said Block B-16.

From the run across Block B-16 East and West it is apparent that when you are confined to the call distance to set up the East line of the Block then connect to the plunger coupling at the N.E. cor of section 26 Block B-15 you will fall 59.4 vrs West of it.

Since there are no corners called for along this East line of Block B-16 then course and distance will controll, but the N.E. cor of sec 26 is in on the ground, So I ran course and distance North to the N.E. cor of section No. 1, Blk B-16, then I have to run N. $13^{\circ}30'W$. to hit the said N.E. cor of 26. thus throwing the swing all in the last mile, or the first mile south as the case may be.

University Block 35 has no call for the T.&P. land that lies to the East, but it is located from the south, and has for its beginning corner the S.W. of section 14, or rater the S.W. cor of the Block is the beginning corner, and as Mr. Twichell called for the East line of Block B-16 to be in the West line of the University, and there being sufficient space for Univ. Blk. 35 it looks logical to hold the University line against the East line of Block B-16, which will fit Mr. Twichell's calls for the South line of the University in Block B-23 to the South, Thereby preserving perfect harmony between the University and the surrounding surveys on the South and West, but when we do this then there will be a small strip of vacant land between Univ. Blk. 35 and the T.&P. Blk. 44. Tsp No 3 South, which is more fully shown on sketch submitted herewith.

In the construction of the T.&P. Block 44, I conformed to the corrected field notes of the sections in this block, and the vacancy thus developed aggregates 300 acres.

The width of the vacancy between section 11 Univ Blk. 35 and the West line of section 33 T.&P. Blk. 44, Tsp No. 3 South is 110 vrs according to the way Twichell's work shows, when the distances of his lines are compared, I find the vacancy to be 102 vrs wide at this same place. But counting 15 vrs excess for section 34, then Twichell will check with me within 6 vrs.

I submit the above with accompanying map for whatever purpose it might serve in relating the various blocks to each other.

Very Truly Yours,

Robt E. Estes

Licensed Land Surveyor, Midland Texas

P. S. I show in Red on the sketch attached the position of the University Block 35, Ector and Crane Counties, Texas according to its original locating calls, and entirely without reference to the surrounding or adjacent surveys.

Signed Robt E Ester

Licensed Land Surveyor, Midland Texas.

Sketch File No. 20 (Crane)

Crane & Ector County

Robt E Ester, State, T. & P. Blk 44, T. 3. S. and Blks B-16 - B-22 - B-23 Public School and Blk. 35, University

Filed July 16th 1928 1928

J. H. Walker, Comm. J. T. Robison

File Clerk

Descriptive: See Ector Co. Roll of Sk. C.F.

Sketch File
Ector and Crane Co.

Surveyor Report

Filed July 16th 1928

J. T. Robison, Comm.
S. Clerk

Roll of
See Sketch filed with this