

WILLIAM ALLEY
CIVIL ENGINEER
ODESSA, TEXAS

1309

March 16, 1930.

Hon. J.H. Walker,
Commissioner,
Austin, Texas.

Dear Sir:

In answer to your of March 5th, I am enclosing a sketch showing the location of Crane City.

The Townsite Agents do not at this time have any prints of the original Plat. If I can get a print of the Original Plat will send same to you.

Yours truly,

William Alley

RECEIVED

MAR 19 1930

REFERRED TO MAP



Sketch File No. 51
Crane
March 12
March 21
March 28
March 31
April 1
April 2
April 3
April 4
April 5
April 6
April 7
April 8
April 9
April 10
April 11
April 12
April 13
April 14
April 15
April 16
April 17
April 18
April 19
April 20
April 21
April 22
April 23
April 24
April 25
April 26
April 27
April 28
April 29
April 30
May 1
May 2
May 3
May 4
May 5
May 6
May 7
May 8
May 9
May 10
May 11
May 12
May 13
May 14
May 15
May 16
May 17
May 18
May 19
May 20
May 21
May 22
May 23
May 24
May 25
May 26
May 27
May 28
May 29
May 30
May 31
June 1
June 2
June 3
June 4
June 5
June 6
June 7
June 8
June 9
June 10
June 11
June 12
June 13
June 14
June 15
June 16
June 17
June 18
June 19
June 20
June 21
June 22
June 23
June 24
June 25
June 26
June 27
June 28
June 29
June 30
July 1
July 2
July 3
July 4
July 5
July 6
July 7
July 8
July 9
July 10
July 11
July 12
July 13
July 14
July 15
July 16
July 17
July 18
July 19
July 20
July 21
July 22
July 23
July 24
July 25
July 26
July 27
July 28
July 29
July 30
July 31
August 1
August 2
August 3
August 4
August 5
August 6
August 7
August 8
August 9
August 10
August 11
August 12
August 13
August 14
August 15
August 16
August 17
August 18
August 19
August 20
August 21
August 22
August 23
August 24
August 25
August 26
August 27
August 28
August 29
August 30
August 31
September 1
September 2
September 3
September 4
September 5
September 6
September 7
September 8
September 9
September 10
September 11
September 12
September 13
September 14
September 15
September 16
September 17
September 18
September 19
September 20
September 21
September 22
September 23
September 24
September 25
September 26
September 27
September 28
September 29
September 30
October 1
October 2
October 3
October 4
October 5
October 6
October 7
October 8
October 9
October 10
October 11
October 12
October 13
October 14
October 15
October 16
October 17
October 18
October 19
October 20
October 21
October 22
October 23
October 24
October 25
October 26
October 27
October 28
October 29
October 30
October 31
November 1
November 2
November 3
November 4
November 5
November 6
November 7
November 8
November 9
November 10
November 11
November 12
November 13
November 14
November 15
November 16
November 17
November 18
November 19
November 20
November 21
November 22
November 23
November 24
November 25
November 26
November 27
November 28
November 29
November 30
December 1
December 2
December 3
December 4
December 5
December 6
December 7
December 8
December 9
December 10
December 11
December 12
December 13
December 14
December 15
December 16
December 17
December 18
December 19
December 20
December 21
December 22
December 23
December 24
December 25
December 26
December 27
December 28
December 29
December 30
December 31

Sketch File No. 21.

Crane County

Wm. Alley's Sk. & State

Showing Location Crane City Townsite.

Filed March 19 1930

J. H. Walker, Comm.

C. F. Blycher

File Clerk

Descriptive:

WILLIAM ALLEY
CIVIL ENGINEER
ODESSA, TEXAS

March 19, 1930.

LICENSED LAND SURVEYOR

Crane County
Sketch File

Recd March 19, 1930

-B-

Showing Location
of
Crane City Townsite

Yours truly,

William Allen

If I can get a print of the Original Agents do not at this time have any prints

showing the location of Crane City.

In answer to your letter of March 19, 1930, I am enclosing a sketch

REFERRED TO MAP

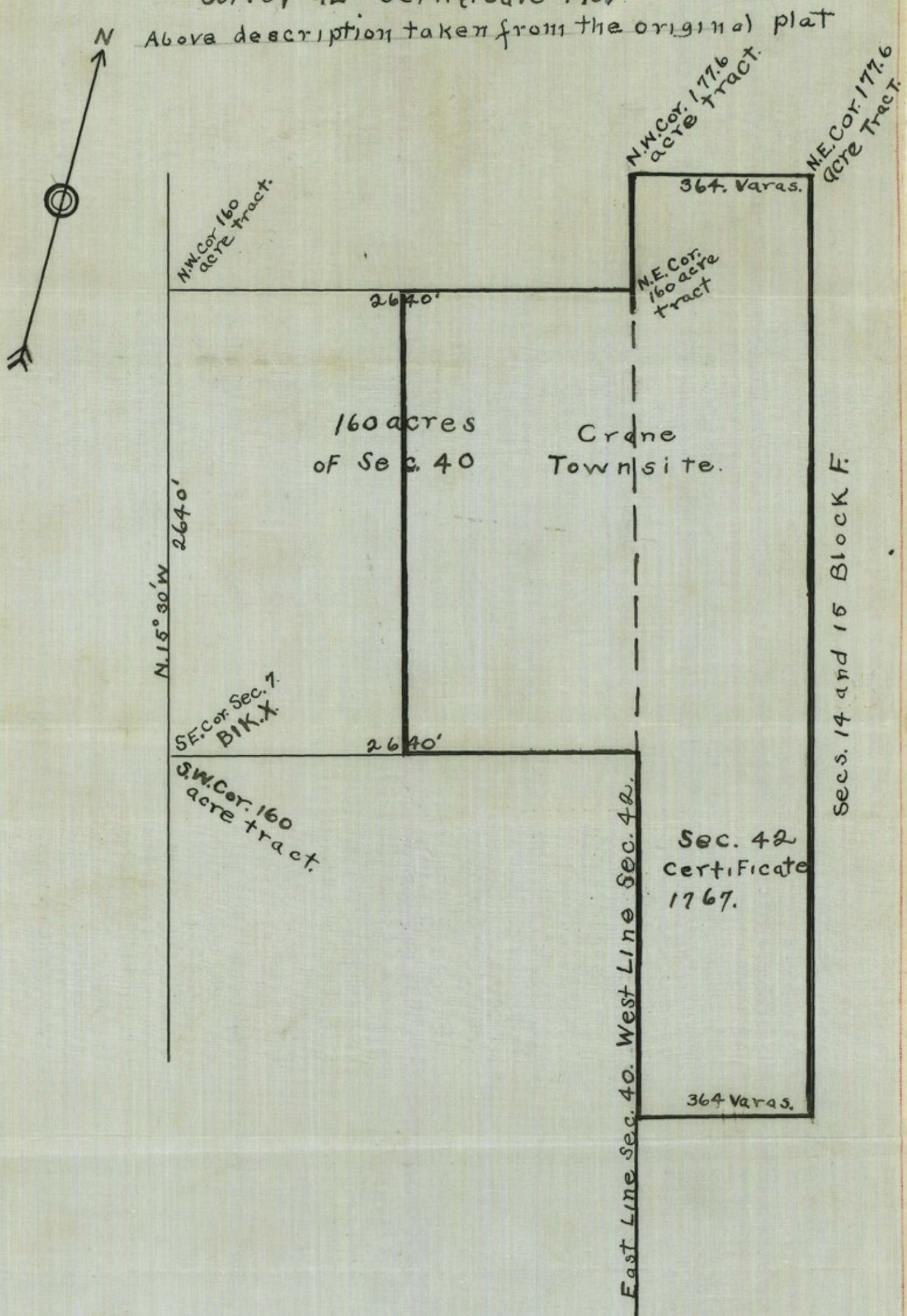
MAR 19 1930

RECEIVED

counter 1959

1300

Situated in The East side of a 160 acre Tract out of The South part of North part of Survey 40 Certificate 2044 and the North part of 177.6 acre Tract of the South part of The Survey 42 Certificate 1767.



Secs. 14 and 15 of the Goodfellow survey extends over and covers that part of sec. 42 that is shown in the town site.

