

Number 19608

1930

Crane County Texas
Licensed Land Surveyor

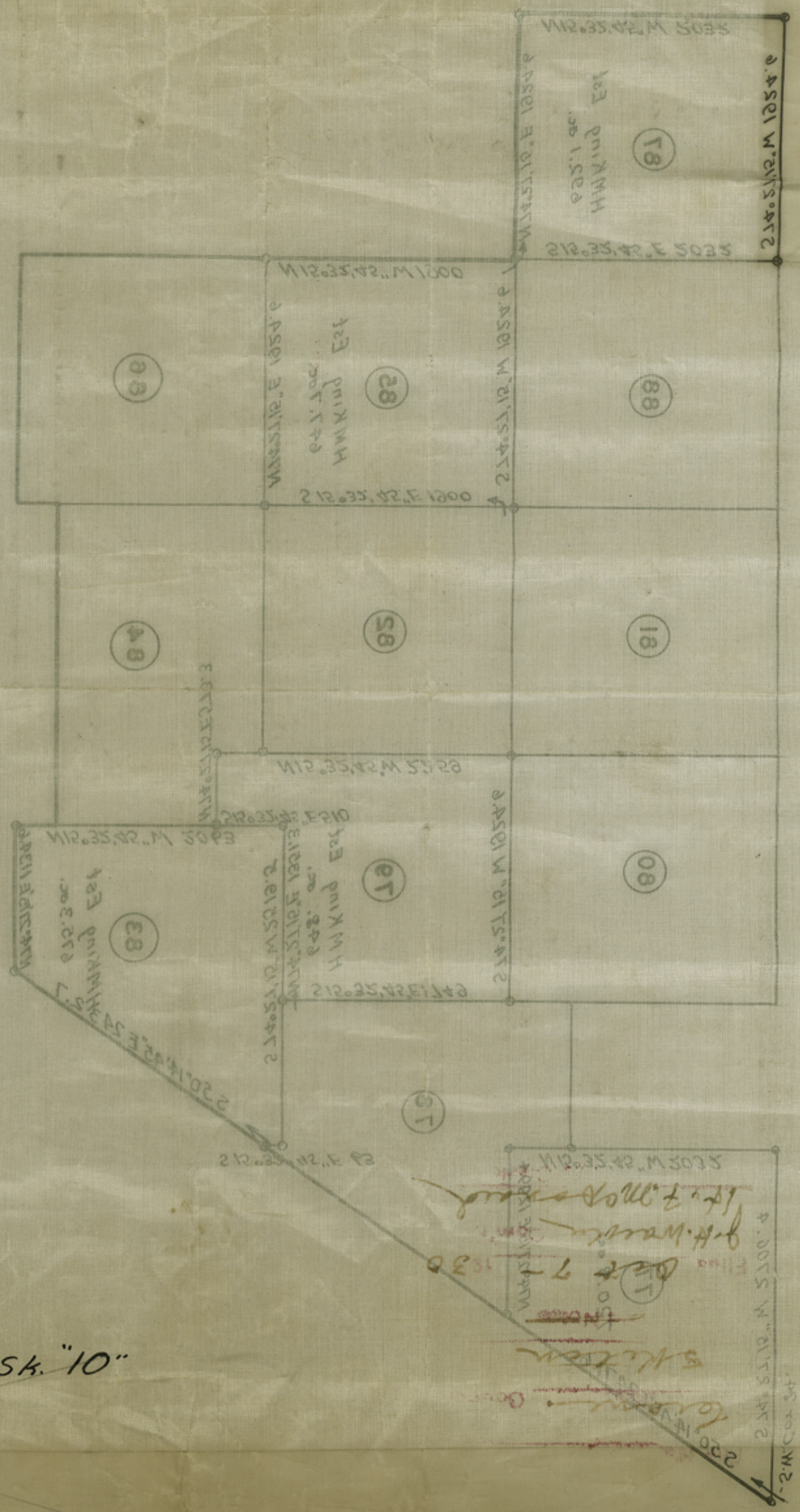
R.E. Estes

This Sub of October 1930
and corrected as to the
that the lines, boundaries and corners are
hereby certify that the person sketch is true and correct
I, R.E. Estes, Licensed Land Surveyor Texas do

БЛОК X

СВАНЕ СОУТИ СКЕТЧ

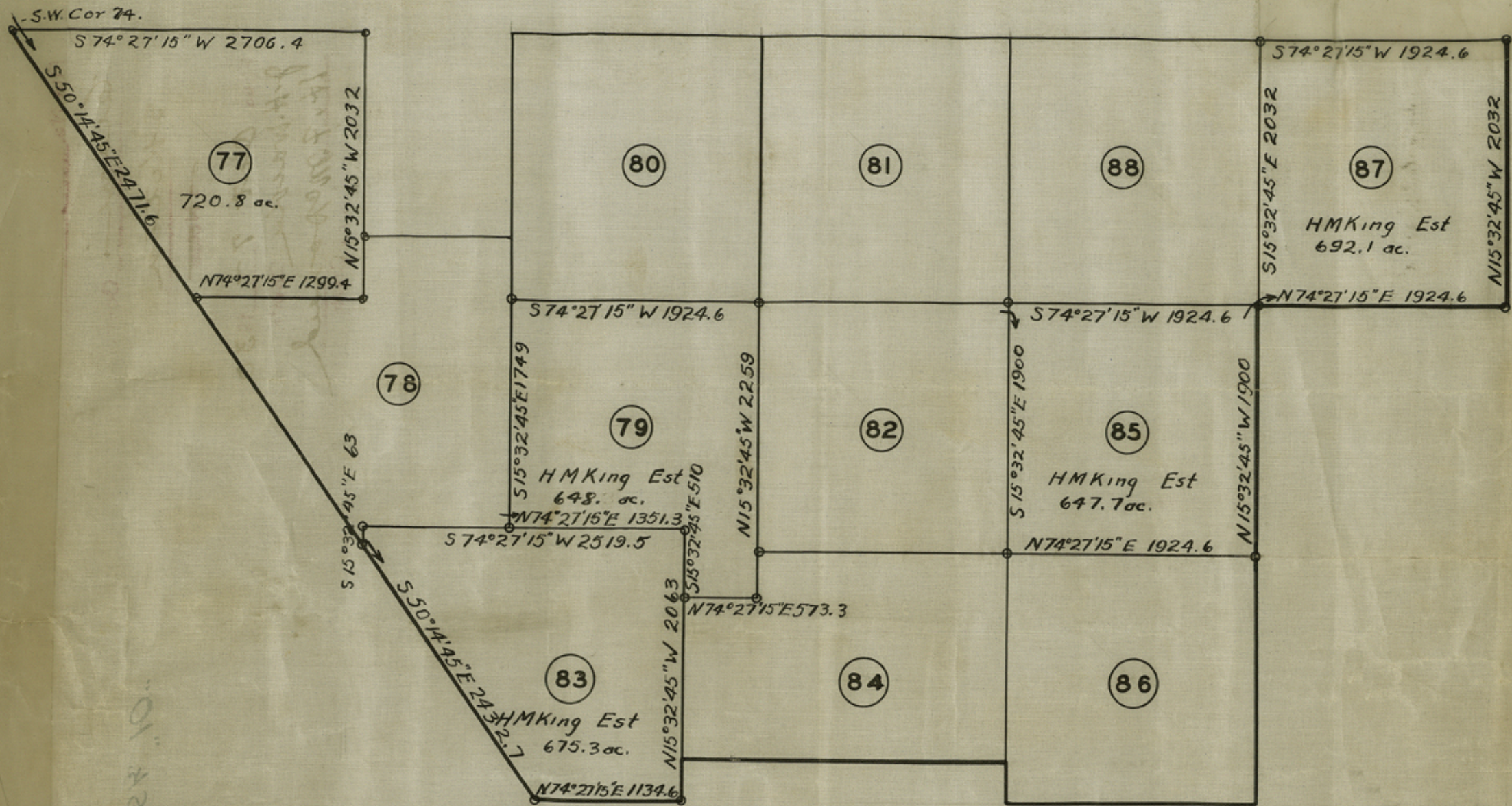
No. 1330 Cont'd
 Date Oct 7 1930
 City St. Louis
 State Mo.
 Name St. Louis E. Co.



#29

Crane County Rolled Sk. "10"
 Part of Block X
 By R.E. Estes
 Filed Oct. 7, 1930

R.E. Estes
 Oct 7 1930
 St. Louis, Mo.
 Licensed Land Surveyor



CRANE COUNTY SKETCH
BLOCK X

I, Robt. E. Estes, Licensed Land Surveyor, Midland Texas, do hereby certify that the hereon sketch is true and correct That the lines, boundaries and corners are truly described and correctly set forth just as they are on the ground. This 2nd day of October 1930

Robt. E. Estes.
Licensed Land Surveyor
Midland County Texas

File No. Sketch File 29
Crane County
Filed Oct. 7 19 30
By GARRY MAURO, Com'r
(Douglas Howard)

Filed Oct 7 1930
By H. E. Estes
Part of Block X
Crane County, Bolled 24 10.