

THE STATE OF TEXAS, #

COUNTY OF CROCKETT. ## I, Edgar C. Saunders, Licensed State Surveyor, hereby certify that there is an error of 100 varas in the sketch filed by me in Land Office December 14th, 1921, the said sketch shows the connection line from North part of I & G.N. Survey No. 43, Block 1, to the S.W. Corner of Section 44, Block GG, Crockett County, to be 1332 varas, instead of 1432 varas. Since filing said sketch I have carefully rerun the connection between said I & G.N. Block and said Block GG and I find that said line from said Survey 43 to the S.W. Corner of 44, GG, is 1432 varas and not as shown on said sketch 1332 varas. Also since filing said sketch I have determined by actual survey on that the distance from the S.E. Corner of 44, Block GG to the North line of I & G.N. Survey No. 41 is 1386 varas, N.E. Corner of I & G.N. Survey 41 is 1386 varas South and East from the S.E. Corner of Section 44, Block GG.

I hereby authorize the General Land Office to correct said sketch to conform with the facts as certified to by me.

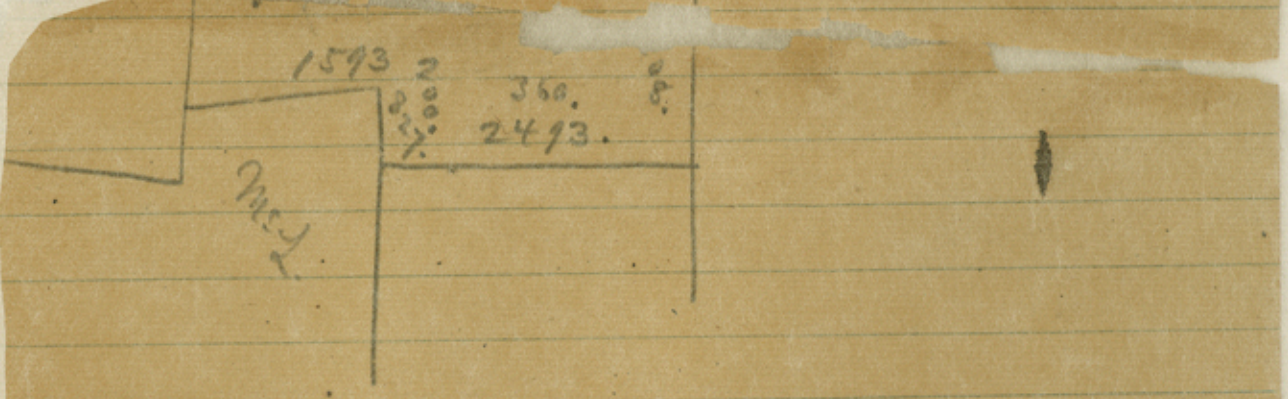
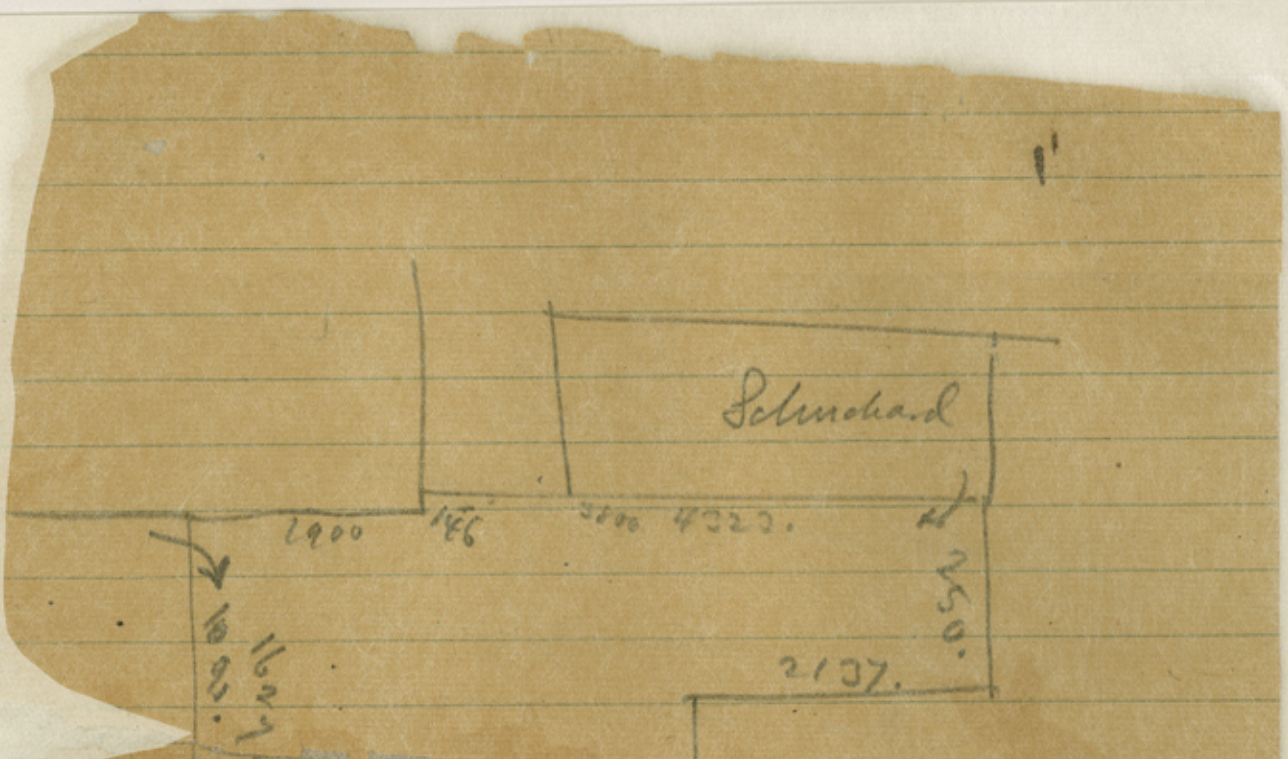
Witness my hand at Ozona, Texas, this 6th day of April, A.D. 1922.

Edgar C. Saunders
Licensed State Surveyor

*Applied
4/12/1922
JWH*

ff

Crockett Co Sk File # 52



NO. 10