



General Land Office,

State of Texas.

Austin.

J. T. ROBISON, COMMISSIONER
J. H. WALKER, CHIEF CLERK

October 13, 1915.

Mr. Frank F. Friend,
Surveyor Crockett Co.,
Ozona, Texas.

Dear Sir:

Your letter of the 5th Inst. relative to the location of GC&SF Ry Co., Block M, and enclosing connecting line has been received. In the absence of the identification on the ground, of the corners established by the original surveyor, other than the corners on the east line of the block, it would appear that the foot-steps of the original surveyors would be more nearly followed by constructing the block course and distance from the original corners found on the east line of the block, and ignoring the call for Howard's well.

Very truly yours,

Acting Commissioner.

JWP/hm

CROCKETT Co.
SK. FILE 54

Counter 19824

OFFICIAL DIRECTORY



W. D. BARTON, COUNTY JUDGE
 TOM NOLEN, CO. AND DIST. CLERK
 JIM MOORE, SHERIFF & TAX COL.
 TOM CASBEER, CO. TREASURER
 F. M. HOLMSLEY, TAX ASSESSOR
 FRANK F. FRIEND, CO. SURVEYOR



G. L. BUNGER, COMMISSIONER PREC. No. 1
 ROGER BLAIN, " " 2
 A. C. HOOVER, " " 3
 W. PAYNE, " " 4
 T. W. PATRICK, JUSTICE OF PEACE " 1
 TOM SMITH, CONSTABLE " 1
 S. B. PHILLIPS, CONSTABLE " 4

Ozona, Texas, October 5, 1915. *191*

Hon. J. T. Robison,
 Comm. General Land Office,
 Austin, Texas.

Dear Sir:-

Enclosed herewith find fieldnotes of a connecting line in Crockett County from Howard Well to original corners in Block I.

I will state that the object of this survey was to determine how to lay out the different surveys in Block M, as there is a question as to how to proceed, in that the position of the NW corner of survey #1, Block M, as located 17100 varas north and 5330 east from NW corner of Howard Well survey differs by 55 varas south and 183 varas east from the same point located from the original corners on the east side of the Block.

Messrs. Mitchell and Henderson, who control all the land in Block M have the material on the ground to erect a wolf-proof fence north and south through this block, and it is very necessary to get on the lines; I have told them that I would not undertake to do this without recommendations from the Land Office. You will therefore confer a favor if you will send me a rough sketch showing just how you would proceed, basing same on the connecting line herewith enclosed.

Thinking we might have made a mistake on the 16913-vara run east we measured back with a 100-vara steel tape and both runs checked the same.

In the 17100-vara run north we checked all the way up with E. A. Giraud's work in block #2, and at the end found that we were so close that we adopted it as correct, Giraud's work showing about 13 varas excess in the total run. At present the grass, weeds, and brush are high, and old settlers say that at the time block #2 was re-surveyed conditions were much better for measurement, whence our reason for adopting the corrected work in block #2 for our nothing.

Hoping to here from you at ~~###~~ your very earliest convenience

I remain,

Yours very truly,

Frank F. Friend

OCT 8 1915

Referred to Map

County Surveyor Crockett, Texas.

The State of Texas #

County of Crockett #

Fieldnotes of a Connecting Line measured from

the N.W. corner of survey #1, I. & G. N. Ry. Co. Block #2 on which is Howard's Well, to the original corners on the West line of Block I, and an original corner on the East line of Block M, G. C. & S. F. Ry. Co., all in Crockett County, Texas.

Beginning at an iron pipe driven in the ground in center of rock mound, pipe marked "1, 8, Bl. 2", from which another stone mound on east slope of mountain bears N 88° 38' W 110½ varas. Another stone Md. on top of hill across Howard's Creek bears due East about 1385 varas.

Thence North 17100 varas to a point.

Thence East 16913 varas to a point.

Thence South 287 varas to a pile of rock that had apparently been a well built mound on north bank of a ~~###~~ drain on face of hill facing South.

Thence again South,--at 1930 varas a small stone mound in a small glade from which a live oak about 10 inches in diameter marked "D" (old mark not plain) bears S 16° W 74½ varas. A burnt live oak stump about 6 inches in diameter bears S 19½ W 47 3/4 varas.

Thence South again,--at 1701 varas pass a stone mound in valley from which a live oak 16 inches in diameter (marked but not plain) bears N 15° E (not 25°) 41 varas, said mound being unmistakably that built for the SE corner of survey #31, Block M.--at 1933 varas a stone mound in narrow valley on South side of drain from which a live oak 16 inches in diameter bears N 2° 10' E 273½ varas; a live oak 6 inches in diameter bears S 86° 5' E 71 varas (tree plainly marked "C"); a rock mound on top of rock ledge bears S 3½° E about 70 varas, said ~~###~~ mound being unmistakably the SW corner of survey #10, Block I, G. C. & S. F. Ry. Co.

VARIATION:-- On northings and eastings used 10° 26' which traced corners in Block #2, I. & G. N. Ry. Co.
On the run South used 10° 25' which precisely traced Cassin's lines.

Surveyed Sep. 30 to Oct. 4, 1915.

Edgar C. Saunders

Chain Carriers.

W. E. Cunnins

I, Frank F. Friend, County Surveyor of Crockett County, do hereby certify that I actually made this survey on the ground, according to law, with competent and careful chainmen, and that every effort at accuracy was put forth through all the work.

Frank F. Friend

County Surveyor Crockett County Texas.

Filed Oct 5, 1915

Recorded Oct 5, 1915 at 6 o'clock P.M.

on page 69, Book K in my office at Ogona, Texas.

Frank F. Friend
Surveyor

CROCKETT Co.
SK FILE 54

Counter 19824

574

1901
574
1327

1901
5
13205
1327
16535

1550
1327
223

16917
16535
378

1901
11406
5930
16736

16917
16736
177
specimen

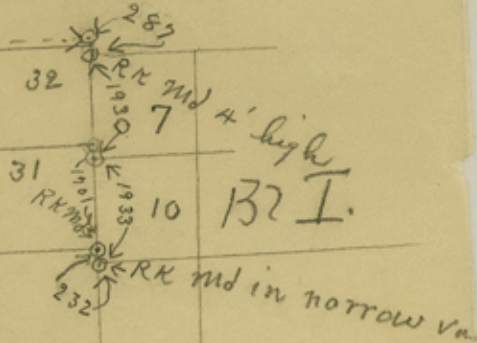
16913 Varas E

1326-05 I non pipe

N

17100 Varas N

B2 M



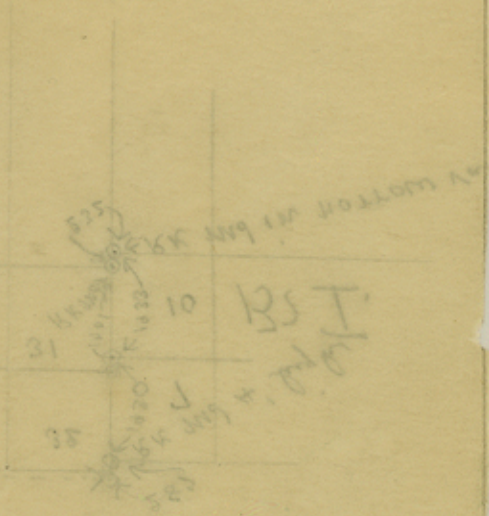
Ottawa's We 22.

Survey #1 9. x 8 W. Ry Co. Bl 2.
counter 19827

1012

No 54
Crockett County
Sketch Files

1915



Counter 19828