

June 14th, 1923

Mr. Edgar C. Saunders,
Ozona,
Texas.

Dear Sir:

This office is in receipt of an unsigned letter, dated June 8th, with blue print plat of land surveys just East of Ozona, in Crockett County. The envelope containing this letter and plat has your return mark to Sonora, Texas, but it is noted in P. S., that the answer should be addressed to Ozona, Texas.

Assuming that you are the writer of this letter, beg to say that I have carefully examined into the question of construction of surveys in Blocks GH, IJ, and KL, referred to, and as shown on said plat and find that with the exception of a few surveys in NE part of Block KL, surveyed by W. H. Bennell, in 1881, these blocks were all surveyed by S. A. Thompson in August in 1880, within a few days of each other. Therefore, it would appear that they are one body or system of surveys and that the lines of original corners between Blocks IJ and KL, shown on your plat, should control the North and South lines through Block GH.

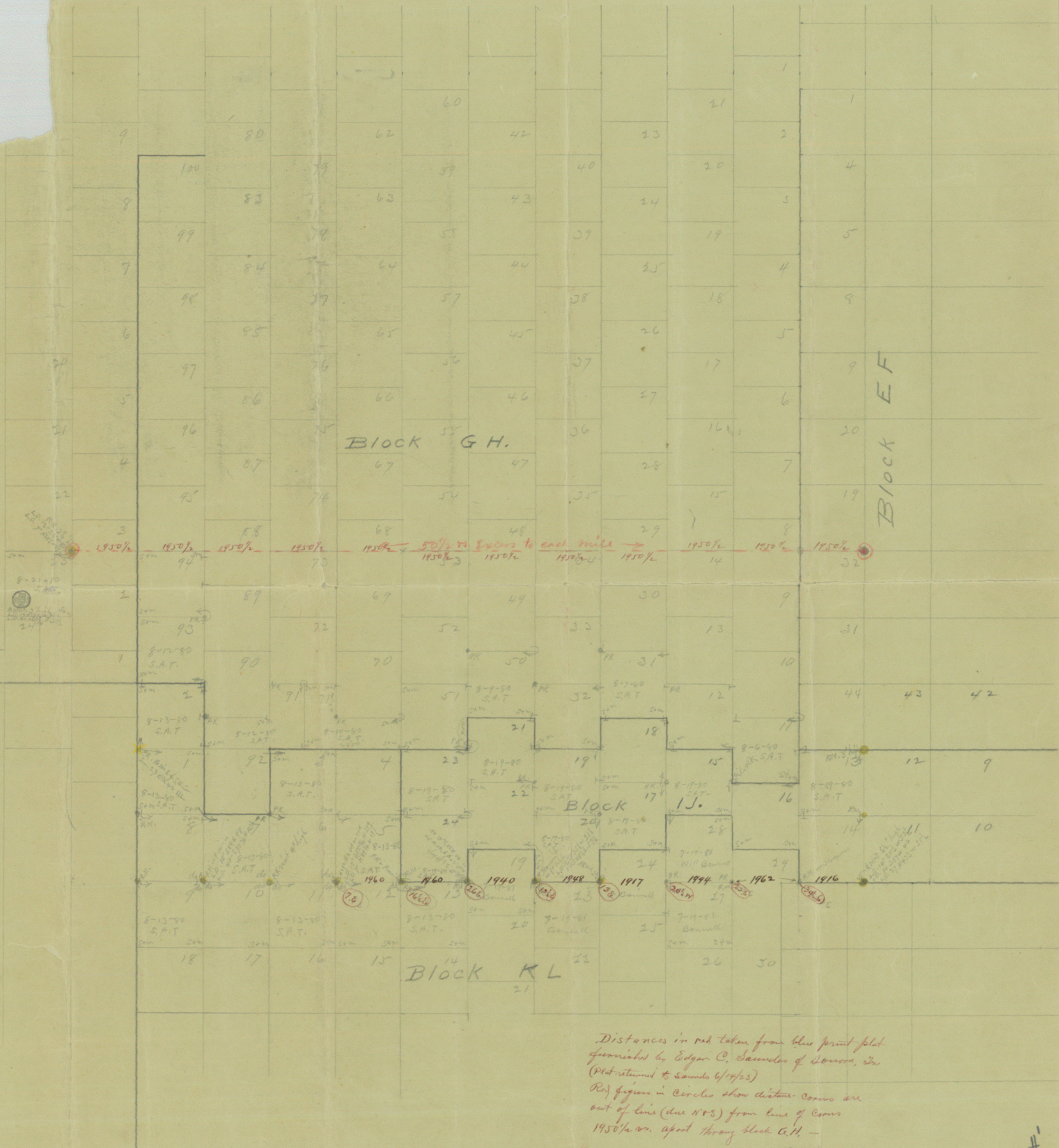
But in consideration of the fact that the greater part of Block GH seems to have been surveyed by you some years ago, in which 50% veras excess were apportioned to the miles East and West through said block, and that fences and improvements have been made according to these lines and that this equal distribution of the excess through Block GH seems to vary but little from the excesses found between said lines of original corners, I am persuaded that it would probably be to the best interests of the land owners to let the resurvey of Block GH as made by you stand and adjust the lines of surveys in Blocks IJ and KL to connect from said line of original corners North to said resurvey corners along the South block line of GH.

This construction, however, is merely suggestive and not to be followed unless satisfactory to all the land owners affected by same. Herewith find plat returned.

Yours very truly,

Clark/c
Enc.

OZONA



Distances in red taken from blue print plot furnished by Edgar C. Saunders of Sonoma, Ca (Plot returned to Saunders 6/19/23)
Red figures in circles show distance corners are out of line (due N.T.S.) from line of Corners 1950 1/2 m. apart through block G.H. -