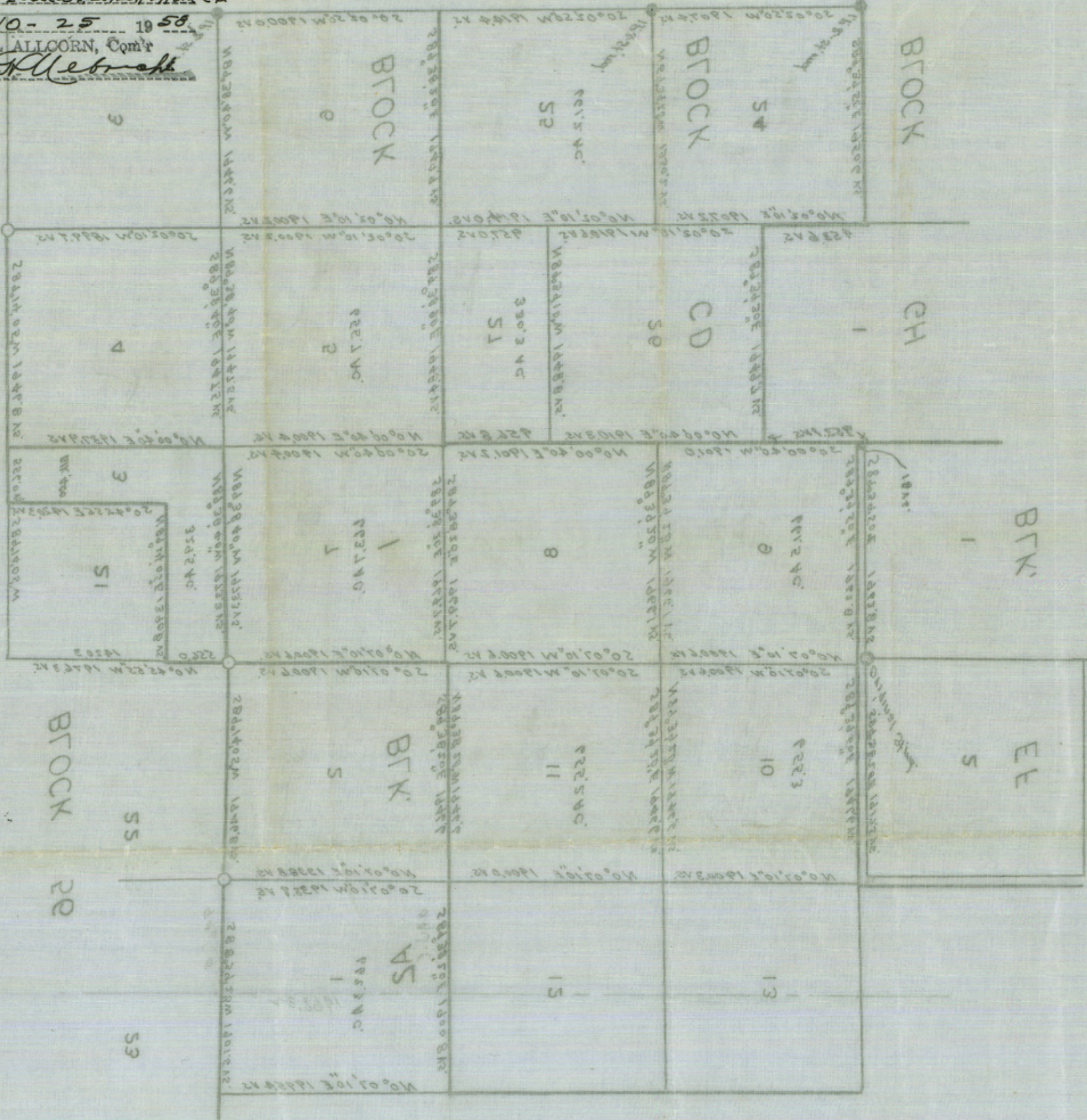


File No. 89 (Box 3-A)

Crockett County  
Sec-4-5-6-7-14-10-11-12-13-14-15-16-17-18-19-20-21-22-23-24-25-26-27-28-29-30  
1 & 2 - BLK A 2 - Sec-24, 25, 26, & 27, BLK C D

Filed 10-25 1958

By BILL ALLCORN, Com'r  
H. H. Webb



# CROCKETT COUNTY SKETCH

RECEIVED  
OCT 22 1958  
4-10-1958  
SCALE 1 INCH = 1000 FEET

Correct  
The above sketch is true and  
Crockett County, Texas, do hereby certify  
The County Clerk on November 1958

County Surveyor Crockett County

91691 10/25/58

10-25-58



