

**J. A. CONKLIN**  
LICENSED STATE LAND SURVEYOR  
204 SOUTH OAKES  
SAN ANGELO, TEXAS

*0612*

February 21, 1968

Honorable Jerry Sadler  
Commissioner of the General Land Office  
Austin, Texas

Dear Commissioner:

I have completed remarking the old original corners in Block BB and adjacent corners in other Blocks, set by S. A. Thompson, in 1880, as the Original Surveyor. A certified sketch of my survey is attached to this report. It shows, in detail, the description of the marks which we placed at each of these Original Corners.

The Coordinates shown on the sketch are Texas Central Zone Coordinates and refer to sea level distances and the grid azimuth of this zone. The courses, shown on the sketch, are based on the general course as determined from the Original Surveyor's Corners on the ground. The distances, shown on the sketch, are those determined by a triangulation net laid down in this area and are based on distances at the elevation above sea level of this area. The distances determined from the Coordinates would necessarily be shorter by a small amount as they are sea level distances.

According to his field notes, the Original Surveyor, S. A. Thompson, set rock mounds at NW27 and NW 26, Block WX, and SE 1, Block BB. The rock mounds were not visible, as such, on the ground when I conducted a search for them twenty-eight years ago, and so far as I know they have never been found.

The Original Corners shown on my sketch and described in this report are located in the central part of a large body of land in Crockett County, Texas, owned by the Trustees of Shannon West Texas Memorial Hospital of San Angelo, Texas. More than seventy square miles of the Shannon lands depend on these corners for their location on the ground. Some of the corners found on the ground and called for in the field notes of the Original Surveyor were rock mounds without bearings. These corners were becoming badly scattered and would soon be lost corners. As a land surveyor, I have known these corners for many years and know of my own knowledge that the positions of these corners conform in courses and distances to other original corners set by S. A. Thompson in the area which are absolutely identifiable by bearings and features as original corners set by him, and in my opinion such rock mounds are mounds called for by S. A. Thompson in his field notes.

*Counter 19918*

**J. A. CONKLIN**  
LICENSED STATE LAND SURVEYOR  
204 SOUTH OAKES  
SAN ANGELO, TEXAS

At the NE Corner 27, Block WX, the Original Surveyor, Mr. S. A. Thompson, calls for a rock mound 2-1/2 feet high from which a live oak 7 inches in diameter bears S 45-1/2° W 588 varas; another live oak 12 inches in diameter bears S 20-1/2° W 713 varas. In 1928, I was at this corner and found the live oak tree at S 45-1/2° W 588 varas had been cut down with only the stump of the tree remaining. The live oak called for at S 20-1/2 W 713 varas was a healthy green tree and the "X" marked on the trunk was plainly visible. I was at this corner again in March, 1932 (see Exhibit H). I found there had been little change in the conditions around this corner since 1928, except the "X" on the live oak tree at S 20-1/2 W 713 varas had begun to grow off the tree and was not so easily seen. Today the old live oak stump at S 45-1/2° W 588 varas is much decayed; the live oak tree at S 20-1/2 W 713 varas is dead and some of the bark has fallen off and there are no signs of the "X" once marked on its trunk. The three large rocks and iron pipe driven in the mound are in the same position as they were when I first saw this corner thirty-nine years ago.

In order to preserve and permanently mark the NE Corner of Survey 27, Block WX, at the site of the original stone mound built by S. A. Thompson, I built and set a concrete monument with brass plate in top marked "SE 10 B9 NE 27 B WX W.L.64 B UV J. A. CONKLIN 1967" in the center of the old mound and over the iron pipe driven in the mound. Around the old live oak stump I built a large stone mound. I determined the precise bearing from the old mound and iron pipe to the old stump to be S 45° 21' W 589.9 varas; in the old dead live oak tree, I drove three 60 penny nails about 7 inches apart in a vertical line. I determined the precise bearing from the old mound and iron pipe to the three nails in the old dead live oak tree to be S 20° 15' W 714.2 varas. The Texas Central Zone Coordinates of this monument were calculated to be: X = 594,883.08 varas, Y = 157,387.76 varas.

From the concrete monument above at the NE Corner Survey 27, Block WX; on course N 0° 08' 42" E at 5,763.77 varas (measured by triangulation) I came to a concrete monument set in ground at the SW Corner Survey 16, Block 51, University Lands. The Texas Central Zone Coordinate of this monument were calculated to be: X = 595,012.88 varas, Y = 163,149.39 varas.

From this point S 89° 41' 40" W at 5,760.21 varas (measured by triangulation) I came to an old rock mound of about one bushel of medium size rocks, well rounded and grouped into about a one-vara diameter rock mound. This mound in my opinion is the original rock mound called for by S. A. Thompson in 1880 in his field notes as the SE Corner Survey 15, Block BB. In order to preserve and permanently mark this mound as the SE Corner Survey 15, Block BB, I set a concrete monument with brass plate in top marked " BLK BB SE 15 SW 102 NE 20 NW 9 BLK 10" in the center of the old rock

J. A. CONKLIN  
LICENSED STATE LAND SURVEYOR  
204 SOUTH OAKES  
SAN ANGELO, TEXAS

mound from which a concrete post with brass plate in top marked "WITNESS NO 1" bears S  $50^{\circ}33'27''$  E 30.04 varas; another concrete post with brass plate in top marked "WITNESS NO 2" bears S  $35^{\circ}59'03''$  W 30.93 varas; peak of round mountain bears S  $5^{\circ}49'16''$  E. The Texas Central Zone Coordinates of this corner were calculated to be: X = 589,253.97 varas, Y = 163,233.85 varas.

From this point N  $0^{\circ}07'46''$  W at 1910.80 varas (measured by triangulation) I came to an old rock mound embedded in the ground with two large rocks at least two feet long in the mound. This old mound in my opinion is the original rock mound called for and designated by S. A. Thompson in his field notes as the NE Corner of Survey 15, Block BB. In order to preserve and permanently mark this NE Corner Survey 15, Block BB, I set a concrete monument with brass plate in top marked "BLK BB NE 15 SE 16 SW 101 NW 102" in the center of the old rock mound from which Yellow Bluff bears S  $52-1/2^{\circ}$  W; a concrete post with brass plate in top marked "WITNESS NO 1" bears N  $45^{\circ}38'14''$  W 33.11 varas; another concrete post with brass plate in top marked "WITNESS NO 2" bears N  $62^{\circ}11'06''$  E 32.89 varas. The Texas Central Zone Coordinates of this corner were calculated to be: X = 589,287.85 varas, Y = 165,144.11 varas.

From this point N  $89^{\circ}56'33''$  W at 3,829.10 varas (measured by triangulation) I came to a large rock 4-1/2 feet long set on end in old rock mound. The large rock weighs about 300 pounds and it is wedged in the mound of large rocks. To my knowledge, this marker has been in the same position for forty years, and in my opinion it is the marker called for in the field notes of S. A. Thompson marking the position of the NE Corner of Survey 13, Block BB. In order to preserve and permanently mark this the Original NE Corner of Survey 13, Block BB, I cemented a brass plate marked "SE 18 SW 17 NE 13 NW 14 BLK BB" in the top of the large rock from which the letter "X" cut in fixed rock bears S  $27^{\circ}42'$  W 12.70 varas; the letter "Y" cut in fixed rock bears S  $47^{\circ}07'$  E 17.75 varas. The Texas Central Zone Coordinates of this corner were calculated to be: X = 585,460.04 varas, Y = 165,224.50 varas.

From this point on a course N  $0^{\circ}17'47''$  E at 1903.85 varas (measured by triangulation) I came to a point in a valley at NE edge of large rock two feet long lying flat on the ground. This point is the same point designated by W. P. Conklin County Surveyor of Crockett County for the Original NE Corner of Survey 18, Block BB, in a survey of this area in 1941 (see Exhibit I). In my opinion this point is the Original NE Corner of Survey 18, Block BB. In order to preserve and permanently mark the Original NE Corner Survey 18, Block BB, I set a concrete monument with brass plate in top marked "BLK BB SE 27 SW 28 NE 18 NW 17" from which a concrete post with brass plate in top marked "WITNESS NO 1" bears N  $44^{\circ}02'32''$  E 32.16 varas. The Texas Central Zone Coordinates were calculated to be: X = 585,507.94 varas, Y = 167,127.53 varas.

**J. A. CONKLIN**  
LICENSED STATE LAND SURVEYOR  
204 SOUTH OAKES  
SAN ANGELO, TEXAS

From this point on course  $N 0^{\circ}12'34'' E$  at 1911.50 varas (measured by triangulation) I came to an old stone mound of three large rocks as called for by S. A. Thompson in the original field notes of Survey 27, Block BB. Again note that this is the same point designated by W. P. Conklin, County Surveyor of Crockett County, for the Original NE Corner of Survey 27, Block BB, in his survey of 1941. (See Exhibit I). In my opinion this point is the Original NE Corner of Survey 27, Block BB. In order to preserve and permanently mark the Original NE Corner of Survey 27, Block BB, I set a concrete monument in the old stone mound of three large rocks with brass plate in top marked "NE 27 NW 28 SL 34 BLK BB" from which a concrete post with brass plate in top marked "WITNESS NO 1" bears  $S 26^{\circ}55' W 33.62$  varas, another concrete post with brass plate in top marked "WITNESS NO 2" bears  $S 74^{\circ}48'47'' E 32.84$  varas. The Texas Central Zone Coordinates of this corner were calculated to be:  
 $X = 585,553.14$  varas,  $Y = 169,038.26$  varas.

From this point on course  $N 44^{\circ}26'36'' W$  at 2709.68 varas (measured by triangulation) I came to a point which in my opinion is the Original SE Corner of Survey 43, Block BB. At this point, S. A. Thompson in his field notes calls for a large flat rock marked "X" on top of quart can filled with pebbles. Mr. Frank F. Friend, County Surveyor of Crockett County, in his survey in 1907 (See Exhibit B) found and identified this corner and added a bearing on a mesquite tree and two windmill bearings. Again in 1925 and 1926, Mr. Friend was at this corner and made some notes in his field books (See Exhibits D, E, F and G). I was at this corner with Mr. Friend in 1927 and found and identified this corner by the large rock marked "X" and the bearings taken by Mr. Friend in his survey of 1907. The mesquite bearing, added by Mr. Friend, was a large healthy mesquite tree then, but today its position is marked by a decaying mesquite stump about two feet high. The windmills used as bearings have been taken down but were plainly visible in 1927 when I was at this corner. At the same point identified by Mr. Friend in 1907, 1925 and 1926, and by me in 1927, I set a concrete monument with brass plate in top marked "SE 43 SW 44 NL 35 BLK BB". This monument in my opinion marks the site of the Original Corner set by S. A. Thompson in 1880 for the SE Corner of Survey 43, Block BB. I cemented the large rock marked "X" to the SW side of my concrete monument in order not to cover up, with my monument, the "X" marked on the large rock. From the monument with the marked brass plate in top I took the following bearings: concrete post with brass plate in top marked "WITNESS NO 1" bears  $N 26^{\circ}40'29'' W 31.93$  varas; another concrete post with brass plate in top marked "WITNESS NO 2" bears  $S 73^{\circ}15'21'' E 32.32$  varas, old mesquite stump two feet high bears  $S 33^{\circ}36' E 39.0$  varas, a wooden peg driven near the center of a group of stones bears  $S 7^{\circ}09' E 106.1$  varas, an old car axle driven in ground bears  $N 29^{\circ}56' W 0.59$  varas, the chiseled "X" on large rock cemented to my monument bears  $S 57^{\circ}15' W 0.40$  varas. The Texas Central Zone Coordinates of this corner were calculated to be :  $X = 583,695.09$  varas,  $Y = 171,010.13$  varas.

J. A. CONKLIN  
LICENSED STATE LAND SURVEYOR  
204 SOUTH OAKES  
SAN ANGELO, TEXAS

From this point on course S  $89^{\circ}51'04''$  W at 1917.04 varas (measured by triangulation) I came to a large scattered rock mound on a flat rock which was in the same position as the rock mound found and identified by Frank F. Friend in 1907 as the Original SE Corner of Survey 42, Block BB. (See Exhibits B and E). Mr. Edgar C. Saunders, Licensed State Land Surveyor, made a survey in this area in 1923 in which he identified this same rock mound as being the Original SE Corner of Survey 42, Block BB. (See Exhibit C). In order to preserve and permanently mark this point which is in my opinion the Original SE Corner of Survey 42, Block BB, I set a concrete monument with brass plate in top marked "SE 42 SW 43 NL 36 BLK BB" in the old rock mound on flat rock from which the letter "X" cut in this same flat rock bears S  $53^{\circ}24'$  W 5.13 varas, the letter "Y" cut in this same flat rock bears N  $78^{\circ}06'30''$  W 8.67 varas. The Texas Central Zone Coordinates of this corner were calculated to be: X = 581,778.57 varas, Y = 171,043.47 varas.

From this point on course N  $89^{\circ}51'43''$  W at 1913.39 varas (measured by triangulation) I came to an old stone mound in a valley which in my opinion marks the Original SE Corner of Survey 41, Block BB. As shown on copies of a portion of the field book of S. A. Thompson (See Exhibit A) he ran a traverse in February 1881 from Live Oak Creek Valley South and East to the SE Corner of Survey 41, Block BB, which he, the Original Surveyor of Block BB, had set and marked with a stone mound two and one-half feet high in 1880. (See field note Sec. 41, Block BB). Then from this rock mound at SE 41, Block BB, S. A. Thompson ran West marking each one-half mile point with a rock mound and at the first half mile, at the third half mile and the fourth half mile, he gives a terrain description. In order to determine if the old rock mound at SE 41, Block BB, was the same rock mound which S. A. Thompson used in 1881 as the SE 41, Block BB, I ran West by compass and Stadia measurements. At one-half mile I found an old rock mound on top of ridge; at one mile I found an old scattered rock mound, and at one and one-half miles I was near the center of a little valley running northeast, where Thompson called for three large rocks. At this place I found three large rocks; at two miles I found a slightly scattered old rock mound in north side of valley running northeast. (See Exhibit A). The above facts revealed by my survey West two miles from the old rock mound at SE 41, Block BB, convinced me that I was following the footsteps of the Original Surveyor of Block BB, which he made in 1881, as he surveyed West from his rock mound, which he had set in 1880 for the SE Corner of Survey 41, Block BB.

In August, 1907, Frank F. Friend, County Surveyor of Crockett County, made a survey in this area according to his sketch, which is on file in the General Land Office (See Exhibit B) he found and identified the same rock mound as the SE Corner of Survey 41, Block BB. Again in the fall of 1925, Mr. Friend was again at this corner (See Exhibits E and F) when he chiseled an "F" one foot high in a flat rock for a bearing to this

**J. A. CONKLIN**  
 LICENSED STATE LAND SURVEYOR  
 204 SOUTH OAKES  
 SAN ANGELO, TEXAS

corner. This mark is still visible and the rock mound, marking the SE Corner of 41, Block BB, is in the correct position from the "F" chiseled in the flat rock by Mr. Friend.

In June, 1923, Mr. Edgar C. Saunders made a survey in this area, in which he found and identified the same rock mound, as the Original SE Corner of Survey 41, Block BB. (See Exhibit C).

In order to preserve and permanently mark the SE Corner of Survey 41, Block BB, at the site of the original rock mound built by S. A. Thompson, I built and set a concrete monument with brass plate in top marked "SE 41 SW 42 BLK BB" in the old rock mound from which a letter "F" one foot high chiseled in rock bears N  $87^{\circ}45'$  E 84.0 varas, a concrete post with brass plate in top marked "WITNESS NO 1" bears S  $69^{\circ}06'44''$  W 30.49 varas, pipe in well at windmill and two concrete tanks bears South 31.71 varas and East 75.28 varas. The Texas Central Zone Coordinates for this corner were calculated to be: X = 579,865.89 varas, Y = 171,086.33.

From this point on course S  $0^{\circ}05'57''$  W at 1913.89 varas (measured by triangulation) I came to an old rock mound composed of large rocks on east slope of hill near the foot of hill. This mound in my opinion is the rock mound called for in the field notes of S. A. Thompson and designated as the NW Corner of Survey 25, Block BB. Mr. Edgar C. Saunders in his survey of 1923 (See Exhibit C) found and identified this point as being the Original NE Corner of Survey 24, Block BB. (See field notes for Survey 24, Block BB). Mr. Frank F. Friend in his survey of 1907 (See Exhibit B) found and identified this same old mound as being the Original NE 24 and NW 25, Block BB. In order to preserve and permanently mark the NW Corner of Survey 25, Block BB, at the site of the original rock mound, I built and set a concrete monument with brass plate in top marked "SL 37 NE 24 NW 25 BLK BB" from which the letter "X" cut in fixed flat rock bears S  $76^{\circ}53'20''$  E 7.80 varas, the letter "Y" cut in fixed flat rock bears N  $5^{\circ}53'20''$  W 8.76 varas. The Texas Central Zone Coordinates of this corner were calculated to be: X = 579,824.32 varas, Y = 169,173.11 varas.

Beginning again at the monument set by me as marking the original NE Corner of Survey 13, Block BB, a large rock set on end in rock mound with brass plate cemented in top marked "SE 18 SW 17 NE 13 NW 14 BLK BB" from which the letter "X" cut in fixed rock bears S  $27^{\circ}42'$  W 12.70 varas; the letter "Y" cut in fixed rock bears S  $47^{\circ}07'$  E 17.75 varas;

Thence S  $0^{\circ}08'14''$  E at 7684.71 varas (measured by triangulation) I came to an old rock mound at SE foot of hill. I have known the location and position of this mound

J. A. CONKLIN  
LICENSED STATE LAND SURVEYOR  
204 SOUTH OAKES  
SAN ANGELO, TEXAS

for many years, and in my opinion it marks the Original NE Corner of Survey No. 1, Block WX, as established and designated in the field notes of S. A. Thompson.

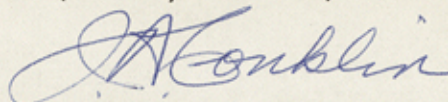
In order to preserve and permanently mark the NE Corner of Survey No. 1, Block WX, at the site of the rock mound called for by S. A. Thompson, I built and set a concrete monument with brass plate in top marked "BLK A SE 10 SW 9 NE 1 BLK WX NW 16 BLK 10" in the center of the old rock mound from which a concrete post with brass plate in top marked "WITNESS NO 1" bears N 19°22'47" W 32.18 varas, another concrete post with brass plate in top marked "WITNESS NO 2" bears N 58°10'13" E 30.83 varas, peak of round mountain bears S 70°46'30" E. The Texas Central Zone Coordinates of this corner were calculated to be: X = 585,324.82 varas, Y = 157,541.90 varas.

From this point on course S 89°54'44" W at 3823.06 varas (measured by triangulation) I came to an old rock mound 18 varas North of an East-West net wire fence in flat. The location and position of this mound have been known to me for many years and in my opinion such mound is the original rock mound called for by S. A. Thompson in his field notes as marking Block WX.

In order to preserve and permanently mark the NE Corner of Survey 3, Block WX, at the site of the original rock mound called for by S. A. Thompson in his field notes, I built and set a concrete monument with brass plate in top marked "BLK BB SE 2 SW 1 NE 3 BLK WX NW 50" in the center of the old rock mound from which a concrete post with brass plate in top marked "WITNESS NO 1" bears N 39°51'54" W 32.94 varas, another concrete post with brass plate in top marked "WITNESS NO 2" bears N 54°50'36" E 24.61 varas. The Texas Central Zone Coordinates of this corner were calculated to be: X = 581,502.86 varas, Y = 157,612.47 varas.

Surveyed at intervals from April to August, 1967, by J. A. Conklin, Licensed State Land Surveyor of Texas.

Respectfully submitted,



Licensed State Land Surveyor







42  
 1881 Field Work - Conkitt Co.  
 Feb 11 Beginning at a Pt. 18325 ft. S. and 2375 ft. N. of the N.W. Cor of Sec No 1 Mode for S. T. R.R. Co. being the Sec on which Grison Spig is situated  
 Th. E. 1907 ft. to Pt. in Live-oak valley  
 Th. E. at 800 ft. foot of bluff. at 1000 ft. top of bluff 1900 ft. to Pt. on the plains  
 Th. E. 1907 ft. to Pt. at head of draw very about S.W.  
 Th. E. 1907 ft. to Pt. at head of valley ring S.E. into Edwards crk  
 Th. E. 1907 ft. to Pt. in branch ring abt S.  
 Th. S. at 800 ft. Crs crk in valley ring S.E. at 1400 ft. cre ridge. 1907 ft. to Pt. in little valley ring about E.  
 Th. E. 1907 ft. to Pt. on rough ridge  
 Th. E. 1488 ft. to Pt. in little valley ring N.E.  
 Th. S. 127 ft. to a rock monument - 2 1/2 feet high the S. E. Cor of Sec 41 block B.B.  
 Th. N. 953 1/2 ft. to a rock Mt 2 1/2 ft. high  
 Th. on top of ridge

43  
 1881 Field Work in Conkitt Co.  
 Th. N. 953 1/2 ft. to a rock Mt 2 ft. high  
 Th. N. 953 1/2 ft. to three large rocks in center of little valley ring N.E.  
 Th. N. 953 1/2 ft. to a rock Mt - 3 feet high on N. side of valley ring N.E.  
 Th. N. 45° - W. 2688 ft. to a rock Mt 2 feet high built on the divide, alt 300 ft. W. of the E. Edge of the divide  
 Th. N. 1907 ft. to a rock Mt 4 feet high on N. side of deep rocky ravine ring W. slopes choosing

I, J. A. Conklin, Licensed State Land Surveyor of Texas do hereby certify that this is a copy of a page from a fieldbook found in the old files of Powell & Gage, Dallas, Texas, by Mr. Frank F. Friend in 1935 and is generally accepted as being a fieldbook made by Mr. S. A. Thompson, Deputy Surveyor of Bexar Land District in 1880.

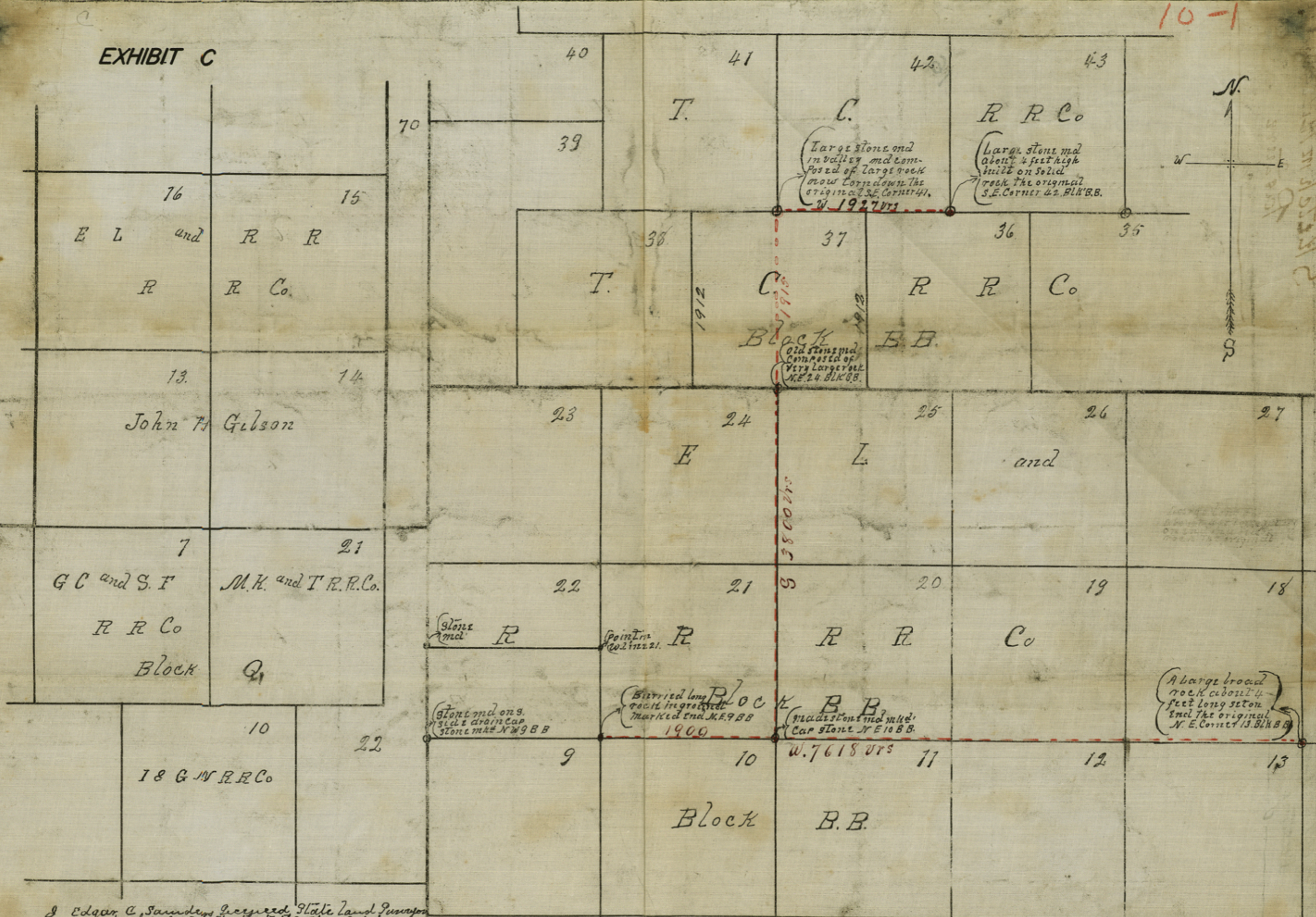
J. A. Conklin  
 Licensed State Land Surveyor  
 San Angelo, Texas - Aug. 25, 1967

EXHIBIT A

Counter 19926

1 VOL 4 PAGE 160

EXHIBIT C



I Edgar C. Saunders, Licensed State Land Surveyor  
do hereby certify that the above and foregoing  
sketch is a true and correct representation of  
the work as found and made on the ground  
given under my hand this 6<sup>th</sup> day of  
June A.D. 1923  
Edgar C. Saunders

Sketch in North West Part Crockett County Magnetic Variation 10° 33' E.  
Scale 1000 vrs to inch.

Sketch in Millrough  
Pasture

Sketch in Millrough  
Pasture



18  
 19  
 20  
 21  
 22  
 23  
 24  
 25  
 26  
 27  
 28  
 29  
 30  
 31  
 32  
 33  
 34  
 35  
 36  
 37  
 38  
 39  
 40  
 41  
 42  
 43  
 44  
 45  
 46  
 47  
 48  
 49  
 50  
 51  
 52  
 53  
 54  
 55  
 56  
 57  
 58  
 59  
 60  
 61  
 62  
 63  
 64  
 65  
 66  
 67  
 68  
 69  
 70  
 71  
 72  
 73  
 74  
 75  
 76  
 77  
 78  
 79  
 80  
 81  
 82  
 83  
 84  
 85  
 86  
 87  
 88  
 89  
 90  
 91  
 92  
 93  
 94  
 95  
 96  
 97  
 98  
 99  
 100

EXHIBIT C

60  
26 -  
34  
06.25

At Corn Corner at the  
S.E. Corner of Sec #43, Bl. 33B  
Aug. 17, 1925

A distance around by  
E from one WM to the  
other is  $168^{\circ} 55'$

A North W M around  
by E to RK Mt with  
new cut cor 200° 20'. Dist  
to RK. Mt. 106.5' Vrs.

The Windmill in a S E  
course from this corner has  
recently been moved a distance  
of 12 feet (S 75 E.); it there-  
fore required a correction of  
the bearing, which I found  
to be  $538^{\circ} 55'$ , referred to  
same meridian as I used  
Aug. 20, 1907.

I, J. A. Conklin, Licensed State Land Surveyor  
of Texas, do hereby certify that this is a copy of  
a page from a fieldbook made by F. F. Friend,  
County Surveyor of Crockett County from about  
1903 to 1933. I have known this book for a  
period of about 40 years.

J. A. Conklin

Licensed State Land Surveyor  
San Angelo, Texas - Aug. 25, 1967

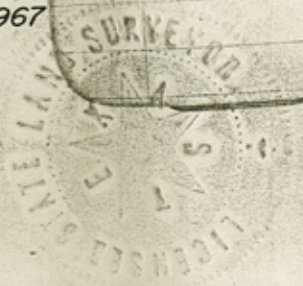


EXHIBIT D

Counter 19929



2 Miles W of Qt. Can + 325

12" F in rock N 57° 32' E 84

at 350 hub on hill

at 1785 Old RR rd E 15°

at 1900 large RR rd (Built) MKD "F"

at 9 " " " E 10 vrs

350 hole

550 X Head

1000 Stake

at 1900 RR rd on end with other around

at N edge of valley S of hill

Center RR marked "F.F.F."

at 5700 v<sup>s</sup> point Mill. v<sup>s</sup> west sec

Cor Br. 38 39 N 28° 25' W to Wood Well #1

39 49 N 37° 44' to " #2

39 27 S 41° 30' W to Orator

Large RR rd with Toyville Bottle in

Center. S E Cor sec. 2, B B<sup>2</sup>

999.5 Pine Stk 10.47 E of line for

S E Cor. 32.5 Acre Tract. Bearings

from pt 10.47 v<sup>s</sup> W Stake: -

Wood Well #1 N 57° 44' W

" #2 65° 36'

Leon Powell Water well 14° 21'

I, J. A. Conklin, Licensed State Land Surveyor of Texas, do hereby certify this is a copy of a page from a fieldbook made by F. F. Friend, County Surveyor of Crockett County from about 1903 to 1933. I have known this book for a period of about 40 years.

*J. A. Conklin*  
 Licensed State Land Surveyor  
 San Angelo, Texas - Aug. 25, 1967

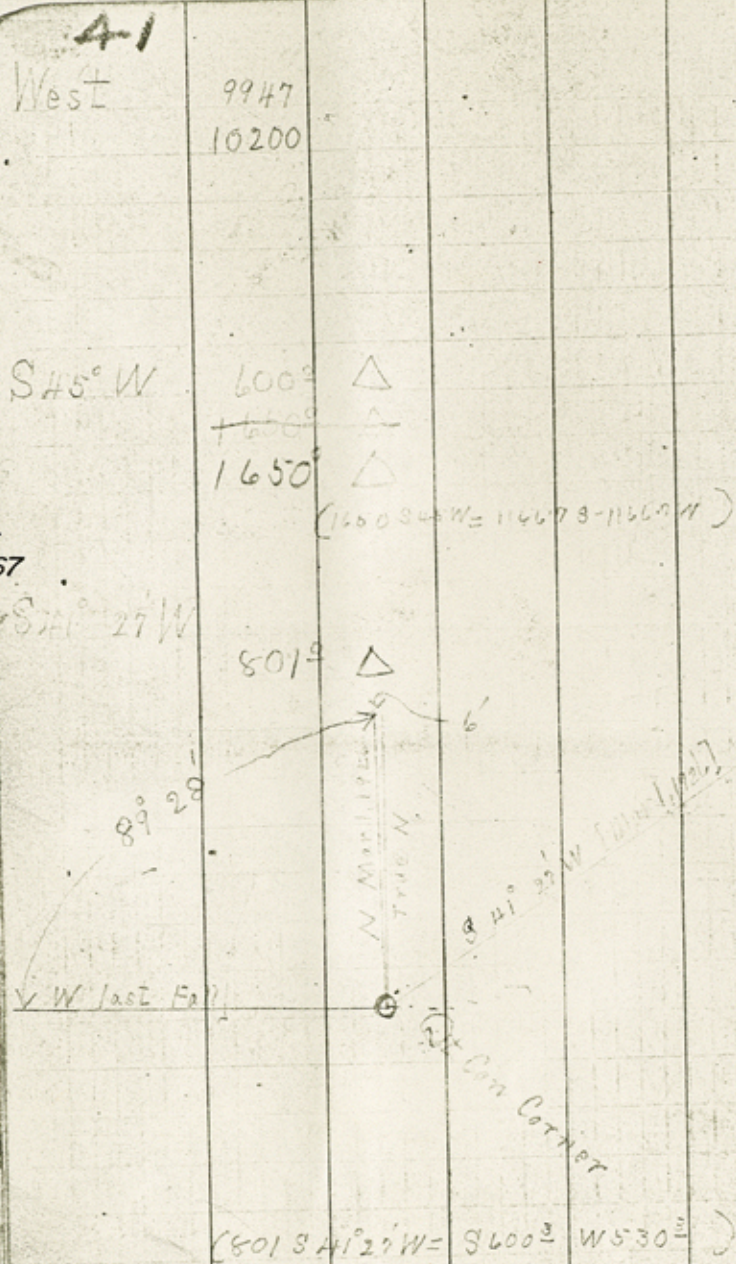


EXHIBIT F

Counter 19931

I, J. A. Conklin, Licensed State Land Surveyor of Texas, do hereby certify that this is a copy of a page from a fieldbook made by F. F. Friend, County Surveyor of Crockett County from about 1903 to 1933. I have known this book for a period of about 40 years.

J. A. Conklin  
 Licensed State Land Surveyor  
 San Angelo, Texas - Aug. 25, 1967



4-2

Old RK Md. M.F. "NE?" N 3.  
 OD S 12° 25' W - OD S 21° 56' W

Old RK Md. 2' high M.F. S 11° 50' H L Dick-  
 inson - Reogan 0' N 79° 50' W 192

At CAN CORNER

Note:- The Line brought in today was referred to a true meridian which I established about 5 months ago at this Corner, and was found to be running 0.5' to the left, or W of true N. In other words, if I had been using the needle I would have had turned off 1/2' too much variation. The  $\angle$  made by my N as I came in today with my W as I went out last Fall was found to be 89° 28', which checks my assertion that Bl. BB uses a N 26' to right of true N.

EXHIBIT G

Counter 19932



5  
5527<sup>5</sup> Δ N & Rks 4 in. E. of  
old Nail.

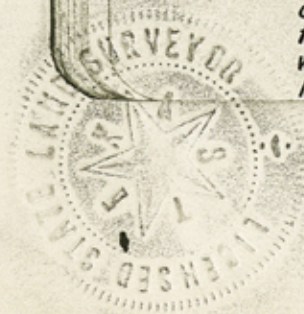
6131<sup>3</sup> Δ N & Rks. 3 large  
Rocks & 1" i.p. driven in center  
brs. & Rt 90° 00' 227<sup>2</sup> vrs.  
a live oak covered hill brs.  
S 37° W 500 vrs. From the  
3 large Rocks & with the line  
south that we have just run  
at True N & S. a 14" live oak  
mkd "X" brs. S 20° 45' W 714.4 vrs.  
an old live oak stump abt  
12" dia brs. S 45° 50' W 590<sup>2</sup> vrs.  
The live oak stump stands abt  
7" above the ground & was cut  
down with an axe or a similiar  
tool.

J.A. Conklin  
c.c. { Gibbons Potect

I, J. A. Conklin, Licensed State Land Surveyor  
of Texas do hereby certify that this is a copy  
from a fieldbook made by me in March, 1932, at  
which time I was acting as Assistant Surveyor to  
F.F. Friend, Special Surveyor of University Land

J.A. Conklin

Licensed State Land Surveyor  
San Angelo, Texas - Aug. 25, 1967



5527<sup>5</sup> Δ N & Rks 4 in. E. of  
old Nail.  
6131<sup>3</sup> Δ N & Rks. 3 large  
Rocks & 1" i.p. driven in center  
brs. & Rt 90° 00' 227<sup>2</sup> vrs.  
a live oak covered hill brs.  
S 37° W 500 vrs. From the  
3 large Rocks & with the line  
south that we have just run  
at True N & S. a 14" live oak  
mkd "X" brs. S 20° 45' W 714.4 vrs.  
an old live oak stump abt  
12" dia brs. S 45° 50' W 590<sup>2</sup> vrs.  
The live oak stump stands abt  
7" above the ground & was cut  
down with an axe or a similiar  
tool.

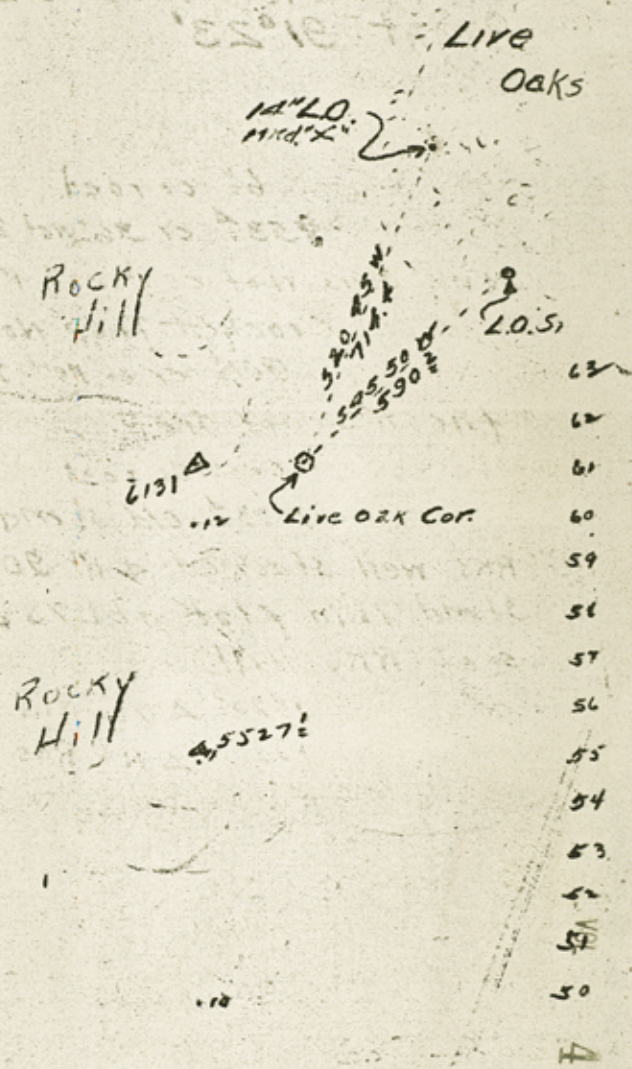


EXHIBIT H

Counter 19933





I, W.P. Conklin, County Surveyor  
of Crockett County Texas, do hereby  
certify that the above plot is a true  
representation of a survey made on  
the ground June 20 to Sept. 1, 1944

W.P. Conklin  
County Surveyor  
Crockett County

SKETCH OF PART  
OF  
**CROCKETT COUNTY**  
Scale 1 inch = 1000 feet

**EXHIBIT I**

Filed for Record in my office  
 at OZONA, TEXAS, on the 24th day of  
 June, 1968.  
 Leta Powell  
 Clerk, County Court, Crockett County, Texas

THE STATE OF TEXAS }  
 County of Crockett }

I, LETA POWELL, Clerk of the County Court in and for said County, do hereby certify that the foregoing instrument dated the 21 day of Feb 1968 with its certificate of authentication was filed for Record in my office, the 24 day of June 1968, at 11 o'clock a M., and duly recorded the 24 day of June 1968, at 3:30 o'clock P M., in Surveyor Records of said County, in Volume 4 on Page 155-174 in Field notes

Witness my hand and seal of the County Court of said County, at office in Ozona, Texas the day and year last above written.

Leta Powell  
 Clerk, County Court, Crockett County

By \_\_\_\_\_ Deputy

File No. 91

CROCKETT County

SKETCH FILE

Filed July 2 1968

JERRY SADLER, Com'r

By [Signature]

Surveyor's Report  
By J. A. Conklin  
Feb. 21, 1968  
To accompany  
Rolled Sk. No. 87  
Establishing corners  
Area 24 mi. N45°E  
of Ozona

(Keep all of  
these papers  
together)

Courtesy 19936