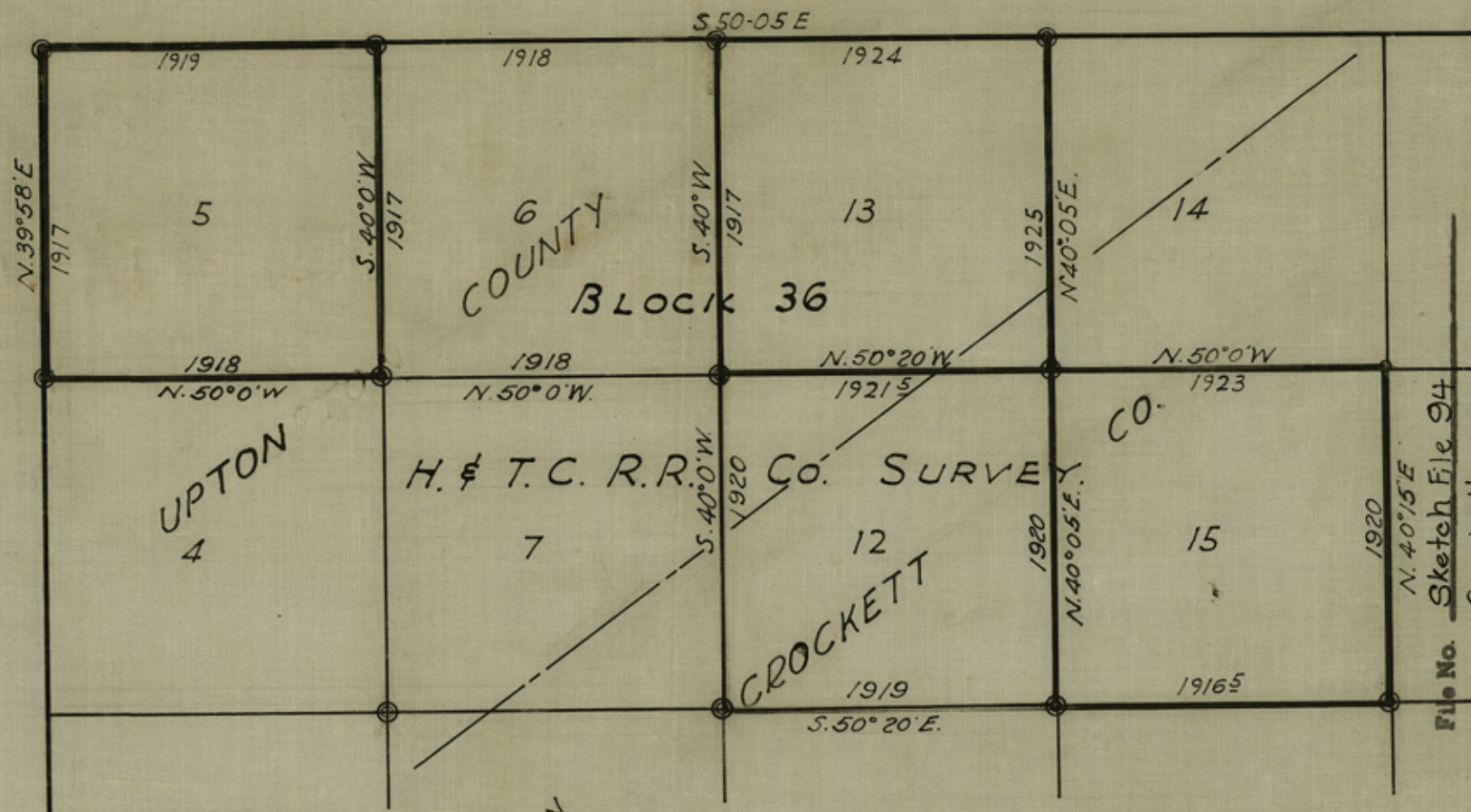


50' WETTER 21' & 1/2
WIFE WITH CROCKETT



File No. Sketch File 94
 Crockett County
 H. & T.C. R.R. Co. Blk. 36, Sur. 5, 6, 7, 12, 13, 14, 15
 Filed [4-16-1940] 19
 GARRY MAURO, Com'r
 By (Douglas Howard)

I, J.J. Goodfellow, licensed Land Surveyor of the State of Texas, do hereby certify that this plat truly represents a survey made by me on the ground

Witness my hand and seal this 8 day of March, 1940

J.J. Goodfellow
 Licensed Land Surveyor.

- ⊙ - Original Corners
- - Corners set on this work

Sketch in
CROCKETT & UPTON COUNTIES
TEXAS

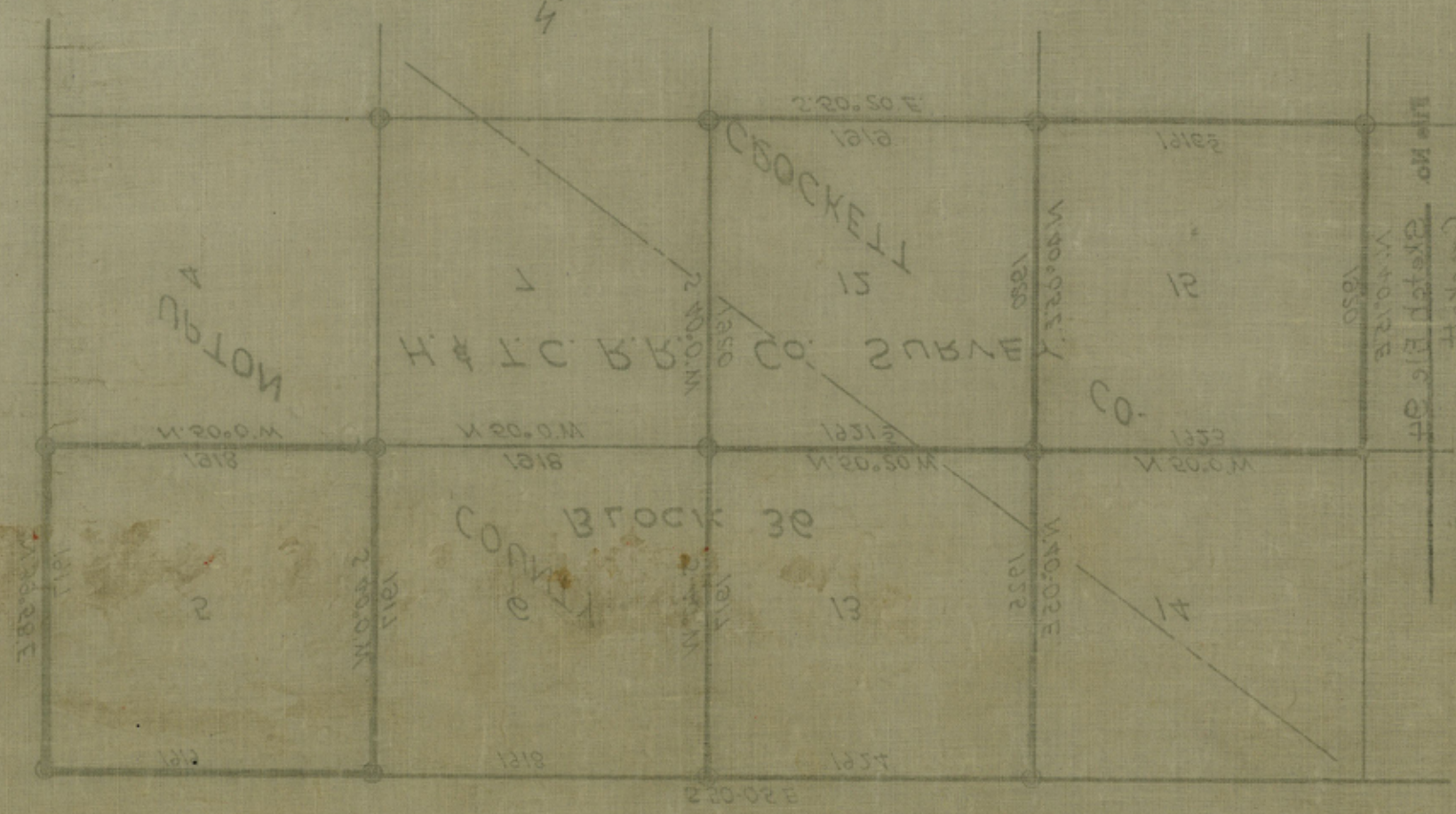
Showing a portion of
BLOCK 36.
H. & T.C. R.R. CO. SURVEYS
 Scale: 1 in. = 1000. vs. Surveyed Oct 1939 to Jan. 1940.
 J.J. Goodfellow Surveyor.
 San Angelo, Texas.

754

1850

0- corners set on this map
 1- original corners
 2- corners set by survey
 3- corners set by deed
 4- corners set by deed
 5- corners set by deed
 6- corners set by deed
 7- corners set by deed
 8- corners set by deed
 9- corners set by deed
 10- corners set by deed
 11- corners set by deed
 12- corners set by deed
 13- corners set by deed
 14- corners set by deed
 15- corners set by deed
 16- corners set by deed
 17- corners set by deed
 18- corners set by deed
 19- corners set by deed
 20- corners set by deed
 21- corners set by deed
 22- corners set by deed
 23- corners set by deed
 24- corners set by deed
 25- corners set by deed
 26- corners set by deed
 27- corners set by deed
 28- corners set by deed
 29- corners set by deed
 30- corners set by deed
 31- corners set by deed
 32- corners set by deed
 33- corners set by deed
 34- corners set by deed
 35- corners set by deed
 36- corners set by deed
 37- corners set by deed
 38- corners set by deed
 39- corners set by deed
 40- corners set by deed
 41- corners set by deed
 42- corners set by deed
 43- corners set by deed
 44- corners set by deed
 45- corners set by deed
 46- corners set by deed
 47- corners set by deed
 48- corners set by deed
 49- corners set by deed
 50- corners set by deed
 51- corners set by deed
 52- corners set by deed
 53- corners set by deed
 54- corners set by deed
 55- corners set by deed
 56- corners set by deed
 57- corners set by deed
 58- corners set by deed
 59- corners set by deed
 60- corners set by deed
 61- corners set by deed
 62- corners set by deed
 63- corners set by deed
 64- corners set by deed
 65- corners set by deed
 66- corners set by deed
 67- corners set by deed
 68- corners set by deed
 69- corners set by deed
 70- corners set by deed
 71- corners set by deed
 72- corners set by deed
 73- corners set by deed
 74- corners set by deed
 75- corners set by deed
 76- corners set by deed
 77- corners set by deed
 78- corners set by deed
 79- corners set by deed
 80- corners set by deed
 81- corners set by deed
 82- corners set by deed
 83- corners set by deed
 84- corners set by deed
 85- corners set by deed
 86- corners set by deed
 87- corners set by deed
 88- corners set by deed
 89- corners set by deed
 90- corners set by deed
 91- corners set by deed
 92- corners set by deed
 93- corners set by deed
 94- corners set by deed
 95- corners set by deed
 96- corners set by deed
 97- corners set by deed
 98- corners set by deed
 99- corners set by deed
 100- corners set by deed

Original of Section 30
 H & T. C. B. Co. Survey
 Block 30
 to north & south
 TEXAS
 CROCKETT & UPTON COUNTIES
 in notes
 sketch in



By (Dorothy Howard)
 GARY MAUNO, Com'r
 Filed [4-14-1907] 19
 H & T. C. B. Co. Survey
 Block 30
 Crockett Co.
 Upton Co.

FILE WITH CROCKETT
 CO. ROLLED SIK. # 49