

The State of Texas }  
City of Austin }

Hon R. M. Hall Commissioner of the Gen-  
eral Land Office. Sir: In accordance with  
the instructions given me on the 1<sup>st</sup> of March  
1898. I in company with Mr J. B. Ammerman  
State Classifier went to Dewey's Lake in Blanco  
Canon. Crosby County and as the field notes of  
Sur. No 37. Block No 28 <sup>H</sup> N. R. Co. call to pass the  
East end of Dewey's Lake <sup>at</sup> 1250 v<sup>s</sup> running South from  
the N.E. corner of said survey we ran random lines  
both up and down White River from the East  
end of said lake, in a search for evidence  
of the original location of the surveys of the said  
Block 28. and at a point 1900 v<sup>s</sup> East and 4450 v<sup>s</sup>  
(4450 v<sup>s</sup>) + 200 v<sup>s</sup> South from the upper or N.E. end of  
Dewey's Lake we found a cottonwood tree 3 ft  
in dia marked x, standing in the forks of a  
branch <sup>or tributary</sup> of White White River at a point 400 or  
500 v<sup>s</sup> S.W. from a bend of White River for loca-  
tion of this point - see A on the Plat marked Ex-  
hibit "A" which is attached to and made  
a part of this Report. The Red line in this  
plat shows the position of its survey  
28 when located from the above mentioned  
Cottonwood and the Blue lines show the position  
of the surveys of said Block. No 28 when located  
from the N.W. corner of Sur. No 141 Block. No 2.  
H & G. N. R. Co. The River (White) and Dewey's  
Lake are indicated on the said map. as they  
are on the ground. The above mentioned  
Cottonwood was assumed by us to be the



N.W. cor. of Sur. No 21 and the N.E. cor of Sur. No 22. of said Block. No 28 also the S.W. corner of Sur. No 28 and the S.E. cor. of Sur. No 27.

The field notes of these surveys all call for a cottonwood 12" on the Bank of White River. From the cottonwood at the assumed N.W. cor. of Sur. No 21. we ran East 1900 v<sup>s</sup>. To point- 50 v<sup>s</sup> West of White<sup>River</sup>. Thence East at 50 v<sup>s</sup> White River in all 1900 v<sup>s</sup> here found nothing to indicate the N.E. cor. of Sur. 20 from this point - ran Thence South. 1900 v<sup>s</sup> found nothing to indicate a corner, here, from this point - it is about 1200 v<sup>s</sup> West to White River.

Thence South 1900 v<sup>s</sup> to point - 90 v<sup>s</sup> East of White River. no cor. found here. Thence South 1900 v<sup>s</sup> to point - for S.E. cor of Sur. 5. Block. 28. no cor. found here. Thence West at 700 v<sup>s</sup> crossed White

River in all 1900 v<sup>s</sup> for S.W. cor. of Sur. 5. no cor. found here. From this point - ran West at 100 v<sup>s</sup> Brokenbough creek. in all 1900 v<sup>s</sup> for S.W. cor. of Sur. 6. found no. cor. here. Thence North at 1380 v<sup>s</sup> Brokenbough creek. in all 1900 v<sup>s</sup> found no. cor. for N.W. cor. of Sur. 6. from this point - it is about 700 v<sup>s</sup> West to Brokenbough creek

Went back to point - made for S.W. cor. of Sur. 5 and ran South at 220 v<sup>s</sup> crossed Brokenbough creek. in all 750 v<sup>s</sup> Thence East 589 v<sup>s</sup> to a large mound of stone distance East from this mound to River is 580 v<sup>s</sup>.

From the last named mound of stone ran South 1900 v<sup>s</sup> to a large mound of stone in



a small draw. Thence East  $343\frac{1}{2}$  v<sup>s</sup> to a pile of stone at the N.W. cor. of Sur. No 141. Block. No 2. H<sup>y</sup> N.R.R. Co. Distance East to White River from this cor. is 610 v<sup>s</sup>.

Went back to point - ran to for S.E. cor of Sur. No 5 Block. 28. H<sup>y</sup> N.R.R. Co. and ran East at 1720 v<sup>s</sup> crossed a branch a prong of Waddell creek, in all 1900 v<sup>s</sup> for S.E. cor. of Sur. 4. Block. 28. distance North to said branch about 150 v<sup>s</sup>.

Thence East at 1637 v<sup>s</sup> crossed an other prong of Waddell's creek, in all 1900 v<sup>s</sup> distance North to said creek. is about 250 v<sup>s</sup>; Thence East 3800 v<sup>s</sup> for S.E. corner of Sur. 13 B. 28 cor. of found no cor. near this point - but found a stone mound under a pasture<sup>since</sup> at a point

on Plat) 5 miles East of the stone m<sup>d</sup> at B. (see Plat) this m<sup>d</sup> at C. must have been put up from a survey made from the point - B. on the assumption that the stone m<sup>d</sup> at B. was the N.W. cor. of Survey. No 143. and is perhaps of recent date (this however is only conjecture)

By a reference to the original field notes of Sur. No 6. Block. No 28. the South line calls to cross Brokenbough Creek, if the m<sup>d</sup> at C. is connected with Sur. 143. Block. 2. the South line will be at least 400 or 500 v<sup>s</sup> South of Brokenbough creek. at nearest point. Also Surveys No 3 and 4 Block. No 28 call to cross.

Waddell creek. and a prong of same. on their South lines. if the said Surveys No 3 and 4 be located from Sur. 143. Block. No 2. their South lines will lie entirely South of these creeks.



See Blue lines in plat which Plat shows the true position of Brokenbough and Waddell creeks as on the ground, hence it would appear that Block. No 28. was never connected on the ground with Block. No 2. as it calls, but was put in a position both N. and West of the point-called for in field notes of Sur. No 1. Block. No 28. (See Plat)

We next ran North from the cottonwood mentioned as the N.W. corner of Sur. No 21 Block. 28. (See point-A. on Plat) and ran North 1900 v<sub>2</sub> to a point-on the South Bank. of White River for the N.E. cor. of Sur. 27.

Thence North 1900 v<sub>2</sub> to point-for the N.W. cor. of Sur 32. (no corner found.) whence a Cottonwood 2 ft- in dia b<sub>2</sub> N 84 W. a Do. b<sub>2</sub> S 12 W.

Thence West 1467 v<sub>2</sub> White River at 1817 v<sub>2</sub> said stream again in all 1900 v<sub>2</sub>. here planted a stone m<sub>2</sub>d. S.E.C. - 37. and surrounded by 4 pits for the S.E. corner of Sur. 37. Block 28.

H and G. N. R.R. Co whence a Cottonwood 20" b<sub>2</sub> S 1/4 W 229 7/8 v<sub>2</sub> a Do. 24" b<sub>2</sub> S 6 3/4 W 236 3/4 v<sub>2</sub>. 3 Leaning Cottonwoods standing close together and 12" 18 1/8"

b<sub>2</sub> N 4 3/4 E. 271 3/4 v<sub>2</sub> 272 3/4 v<sub>2</sub> 273 3/4 v<sub>2</sub> all marked

X this  $\square$  " From this corner ran North at 330 v<sub>2</sub> crossed White River at the extreme S.E. point of the original bed of Dewey's Lake, and continuing North along the East edge of the old Lake bed and at present high water mark. at 650 v<sub>2</sub> point- about 25 v<sub>2</sub> South of N.E. end of said Lake. in all 1900. v<sub>2</sub> Thence West at 1374 v<sub>2</sub> crossed White River in



all 1900 v<sup>s</sup> to point - about 100 v<sup>s</sup> <sup>S</sup> of a pond.  
or slough. of a Crescent shape

Thence North at about 1850 v<sup>s</sup> crossing <sup>River</sup> creek. in all  
1900 v<sup>s</sup>. Thence North crossing White River twice  
in all 1900 v<sup>s</sup> to point - 518 v<sup>s</sup> v<sup>s</sup> East of White River

Thence North. 1900 v<sup>s</sup> to a point - 434 v<sup>s</sup> E. of White  
River. Thence North <sup>3800</sup> 3800 v<sup>s</sup> to point - for the N.W.

corner of Sur. No 49 Block. 28 H & G. N. R. & Co.  
Thence West 1900 v<sup>s</sup>. To the E. line. of League  
No 2. Eastland School Land.

Thence North 250 v<sup>s</sup>. set a stone surrounded  
by 4 Pits for the N.E. corner of the said League  
whence a forked cottonwood 12" each prong. standing  
on the E. bank. of White River br. S74<sup>1</sup>/<sub>4</sub>W 239 v<sup>s</sup> and  
a scrub. Cott<sup>wd</sup> on top of E. bank. said stream  
br. S41<sup>1</sup>/<sub>4</sub>W 248 v<sup>s</sup> both marked  $\diamond$

Thence West at 268 vs. White River at 1736 v<sup>s</sup> cap  
rock. on Spur of Plains at 1787 v<sup>s</sup> cap rock. on  
W. side of said Spur. in all 1900 v<sup>s</sup> planted a  
large flat stone m<sup>k</sup>d E.L. on N. side, on the  
N. side of Bluff about half way between top  
and foot. for the S.E. cor. of ~~S~~ League.

No 1. Eastland School Land whence a flat  
rock. marked  $\diamond$ . br. S52<sup>3</sup>/<sub>4</sub>E 36<sup>1</sup>/<sub>2</sub> v<sup>s</sup>. Thence N 38<sup>1</sup>/<sub>2</sub>W 910

Thence N45 W. at 1425 v<sup>s</sup> crossed Crawfish  
Course of Crawfish Canon S73W. in all 2325 v<sup>s</sup>

Thence N56<sup>1</sup>/<sub>2</sub>W at 975 v<sup>s</sup> top of Bluff at edge  
of Plains in all 1300 v<sup>s</sup>. Thence N45W. at 300 vs.

the Estacado Road in all 2422 v<sup>s</sup>. Thence North  
209 v<sup>s</sup> set a stone 12" x 16" m<sup>k</sup>d E.L. 1888. and

surrounded by 4 Pits, for the N.W. cor. of the  
said League Survey No 1. Eastland School Land  
595

North = 5020  
West = 5021  
N.W. cor  
of No 1



from said stone dug a pit - 16" x 16" which br. N50E  
13 1/2 v<sup>s</sup> a Do. 16" x 16" br. S48 1/4 E 16 v<sup>s</sup>. a large sand  
stone. set by District-Surveyor Knight - for the  
N.W. cor. of the said League Sur. br. East 95 1/2 v<sup>s</sup>  
and South 46 1/4 v<sup>s</sup> a pile of stone known as  
Conellee's cor. of said League br. S. 125 v<sup>s</sup> and  
East 95 1/2 v<sup>s</sup>

Thence South 500 v<sup>s</sup> set a stone m<sup>kd</sup> D at the  
end of a dry Lake, and surrounded by 4 pits.

Thence West at 1 mile set small stone between  
<sup>at 2 miles</sup> 4 pits between a fire guard at 2 miles + 1197 v<sup>s</sup>  
crossed the West fence of the D.L.A. Pasture. at  
3 1/2 miles set a pine stake between 4 pits, whence  
a pit - 16 x 16 br. N50W 8 1/2 v<sup>s</sup> a pit - 16" x 16" br. S66 1/4 W 9 1/4 v<sup>s</sup>.  
at 4 miles set a Pine stake between 4 pits, at  
5 miles m<sup>kd</sup> 4 pits, whence, a pit - br. East 25 v<sup>s</sup>.  
a Do. br. West 17 v<sup>s</sup> - at 5 miles + 935 v<sup>s</sup> crossed  
a Drain in Crawfish Draw. at 6 miles made  
Earth Mound between 4 pits, whence a pit br.  
S68W 9 v<sup>s</sup> a pit - br. N30 1/2 W 8 1/2 v<sup>s</sup> at 7 miles made  
an Earth m<sup>kd</sup> 4 pits. at 8 miles made an  
Earth m<sup>kd</sup> 4 pits whence a pit - 16" x 16" br. West 6 v<sup>s</sup>  
a pit - 16" x 16" br. East 7 v<sup>s</sup> at 9 miles planted  
a sand stone <sup>between - 4 pits and</sup> m<sup>kd</sup> M on E. side and D C.  
on Top for the N.W. cor. of Sur. 1. Block. M. and  
the N.E. corner of <sup>Sur. 1</sup> Block. C. - Crosby County,  
from said stone dug a pit - 20" x 20" which br. S11W  
6 3/4 v<sup>s</sup> a pit - 24" x 24" br. S60W. 10 v<sup>s</sup>.

Thence S45W 2688, v<sup>s</sup> set Pine stake between  
4 pits. Thence S45W 2688 v<sup>s</sup> to Earth m<sup>kd</sup> 4 pits.  
Whence a pit - br. N45E 7 v<sup>s</sup> a Do br. S45W 9 1/2 v<sup>s</sup>  
Thence S45W 2688 v<sup>s</sup> set a small stone m<sup>kd</sup>  
D and between 4 pits.

N.E. corner of  
Block  
N.W. corner of  
Block

page 6



SW corner of  
Survey No. 9  
Block C -

for the SW cor. of Sur. No 9 Block. C. whence  
a Pit-16"x16" br. S42 1/4 W 9 vs a Pit-16"x16" br. N12 1/4 W  
10 1/4 vs.

Thence West at 1 mile set a Pine Stake between  
4 Pits at 2 miles set a small white stone between  
4 Pits at 3 miles planted a stone between 4 Pits  
at 3 1/2 miles + 91 vs a fence at 4 miles set a  
stone mkd  $\bar{\sigma}$  on top. at 4 miles + 73 vs a fence  
at 5 miles set a large stone mkd  $\bar{\sigma}$  for the  
N.W. corner of Survey No 59 Block. C, Crosby  
County, whence the corner set by Connellee.  
for the N.W. corner of the said Survey No 59  
brs. North 296 vs and West 93 vs.

NW corner of  
Survey No. 59  
Block C

The Town of Estacado is situated on this  
Sur. No. 59 and was laid off from the Connellee  
Survey also all the surrounding tracts or surveys  
were improved by to the Connellee lines.

Connection with Block. A Lubbock. County

From the stone set for the N.W. corner  
of Survey No 59. Block. C. in Crosby County  
Begin at the said stone.

#  
Copy

- 1 Thence S45-W 2688 vs
- 2 " S45-W 2688 "
- 3 " S45-W 2688 "
- 4 " S45-W 2688 " made with 74 Pits
- 5 " S45-W 2688 "
- 6 " S45-W 2688 "
- 7 " S45-W 2688 "
- 8 " S45-W 2688 "
- 9 " S45-W 2688 "
- 10 " S45-W 2688 "
- 11 " S45-W 2688 "

Fig 7

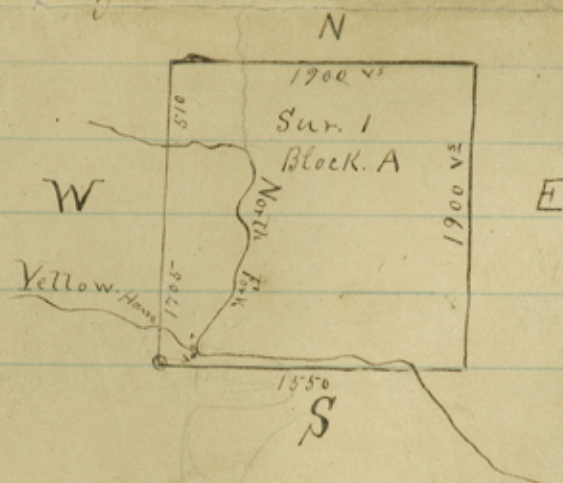


to a point - 11 miles S and 11 miles West of  
 the N.W. corner of Survey 59 Block C. in  
 Crosby County here made a small earth  
 Mound and dug a Pit - 18" x 18" 2, v<sup>s</sup> 845 ~~W~~ E. from it  
 Thence West 4 miles + 880 v<sup>s</sup>. Thence South 361 v<sup>s</sup>  
 To a large <sup>stone</sup> ~~earth~~ Mound <sup>m</sup> Canon. <sup>made</sup> by  
 Powell for the S.W. cor. of Sur. No. 1. Block A  
 Lubbock County. from said mound a small  
 pile of stone in the forks of the Yellowhouse  
 Creek and North Fork. is. N 75° E 204 v<sup>s</sup>.

The said Mound of stone as made by  
 Powell is the true Location of the S.W.  
 corner of the said Sur. No 1 as determined  
 by its call for the North Fork. and  
 running out the said Sur. from the said  
 corner we get the following field Notes.

Beginning at the said stone md. Thence  
 East running almost parallel with the  
 North Fork. at 1530 v<sup>s</sup> crossing the said  
 stream in all 1900 v<sup>s</sup>. Thence North 1900 v<sup>s</sup>.  
 Thence West 1900 v<sup>s</sup> Thence South at 510 v<sup>s</sup>  
 crosses North Fork. at 1705 v<sup>s</sup> crossing Yellow-  
 house creek. in all 1900 v<sup>s</sup>. to the Beginning

The following sketch shows the positions  
 of the North Fork. and the yellow house as they  
 are on the ground in reference to the lines of Sur.  
 No 1. Block. A.



588



Floyd County Connection.

Began at the Pine stake between  
4 Pits set 4 miles West and 500 v<sup>s</sup> South of  
the N.W. corner of the League No 1.  
~~Callahan~~ <sup>Cartland</sup> County school Land. in Crosby  
County. Thence North 3 miles + 1736 v<sup>s</sup>

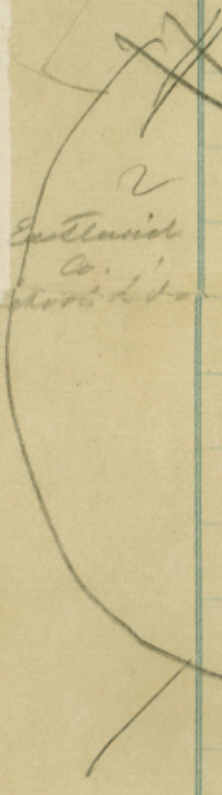
Thence N 35° W. 3275 v<sup>s</sup>. Thence North 1638 v<sup>s</sup>  
to a pile of stone placed by J. J. Mc Clellan  
in 1885 for the S.W. corner of Sur. 12 Block. 1.  
said pile of stone is near the South Bank of White  
River in Blanco Canon whence a Hackberry 3"  
box N 42° E 20 v<sup>s</sup> a Do 3" box N 63 3/4° W 20 v<sup>s</sup>,

Thence North at 95 v<sup>s</sup> said <sup>or</sup> stream and  
crossing it twice more at a short bend  
at 732 v<sup>s</sup> passed a pile of rock on cap rock  
at 2 miles + 8 v<sup>s</sup> passed a stake set by Mc Clellan  
from the said stake a f corner post of a pasture  
fence b<sup>e</sup> S 11 1/2° W 188 v<sup>s</sup>. Continuing North from  
point 8 v<sup>s</sup> S. and 7 v<sup>s</sup> W. of the said stake.

at 2 miles + 340 v<sup>s</sup> passed 52 v<sup>s</sup> W. of a stake  
and tin can + some small rocks. at 3 miles  
+ 340 v<sup>s</sup> passed 76 v<sup>s</sup> W of a pine stake at  
4 miles + 340 v<sup>s</sup> passed 96 v<sup>s</sup> W. of a pine stake

at 5 miles + 340 v<sup>s</sup> passed 116 v<sup>s</sup> W. of a pine stake  
W of a pine stake a rock and a tin can filled  
with rocks about 150 v<sup>s</sup> S. of the S.E. ~~f~~ end of a dry  
surface Lake. this is the cor. set by Mc Clellan  
for the S.W. corner of Sur. No 93. Block. 1.

at 6 miles + 340 v<sup>s</sup> passed 136 v<sup>s</sup> W. of a stone  
and tin can. at 7 miles + 340 v<sup>s</sup> passed  
156 v<sup>s</sup> W. of a pine stake and a tin can filled  
Caunter 20/25





W. of a pine stake one stone and a tin can filled  
with small rock. at 10 miles + 338 v<sup>s</sup> passed.  
216 v<sup>s</sup> W. of a stake in an Earth Mound sur-  
rounded by a circular trench made by M<sup>c</sup>.  
Clellen for the N.W. cor. of Sur. 33. Block. 1.  
in all 10 miles + 35-7 1/2 v<sup>s</sup>.

Thence East 2 miles + 135-6 1/2 v<sup>s</sup>. drove a  
Newberry stone in Earth M<sup>d</sup> surrounded by  
4 pits. whence a pit 20 x 20" by N 71 W 11 1/2 v<sup>s</sup>  
a do 20" x 20" by S 26 1/4 E 8 v<sup>s</sup>. for the S.E. cor.  
of Sur. No 1. Block. T. Floyd. County.

Thence North at 1 mile made 4 pits & M<sup>d</sup>.  
at 2 miles made an Earth Mound & 4 pits  
for the S.E. cor. of Survey 10. Block. T. at  
3 miles + whence a pit by N 48 1/2 W 9 1/2 v<sup>s</sup> a do. by  
N 62 3/4 E 7 v<sup>s</sup> at 3 miles set a stake in an  
Earth M<sup>d</sup> between 4 pits for the N.E. corner  
of Sur. 10 Block. T. whence a stone set by  
Chalk, <sup>and m<sup>d</sup> SW 83</sup> for the S.W. cor. of Sur. 83. Block. D<sup>3</sup>.  
by 231 1/10 v<sup>s</sup> N and 5-19 1/10 v<sup>s</sup> East.

The Town of De La. Plain is situated  
on Sur. 10 Block. T.

L.J. Cook } Chain } Variation 10° 45' E  
L.C. Janewer } Carriers }

Statement

I identified the cor. set by T.J. M<sup>c</sup>. Clellen for  
the S.W. corner of Sur. 12 Block. 1. in 1885. also  
the corner put up by him for the N.W. corner  
of Sur 33. Block. 1. The distance between these  
two corners is 10 miles + 340 v<sup>s</sup> (Should be 10 mi)  
M<sup>c</sup>. Clellen located the S.W. corner of Sur 12. and  
the corner 2 miles North of it which is witnessed  
by a fence post at one time and after wards  
he went back and located the N.W. corner  
of Sur. 33. Block. 1. By running from a point  
17 miles East of the N.W. cor. of Sur. 33.

308 10



putting up corners every mile. To N.W. cor. of 33.  
he then ran South 8 miles putting up corners  
in the shape of <sup>a</sup> Pine stakes and an oyster or fruit-can,  
often filled with rocks, all of which I found as  
described, but on the second run he liked 340.  
+  $v^2$  getting as far South as the corner which  
he put up and witness a ~~on~~ by fence post  
on his first run. in running North from his  
S.W. cor. of No 12. I departed West from his line  
at the rate of 20  $v^2$  to the mile or at an angle  
of  $0^{\circ} 36'$  which shows that he ran on a Variation  
of about  $10^{\circ} 09' E$ , instead of  $10^{\circ} 45' E$ . His corners  
one mile and 2 miles East of his N.W. cor. of 33 show  
the same bearing as his West line. If his cor.  
17. mile East of his N.W. corner of Sur. 33. was a true  
corner, his variation would have been at the rate  
of 20  $v^2$  a mile  $17 \times 20 = 340$ . which accounts  
for the discrepancy. All the lines which I ran  
in Block 28 H & G N. R.R. Co. a variation of  $11^{\circ} 34' E$ .  
+ was used. at the N.W. corner. of Sur. 49. Block.  
28 H & G N. R.R. Co. I changed variation to  $10^{\circ} 45' E$   
and all lines were ran at that - after leaving  
said Block. 28. - In locating the S.E. corner.  
of Sur. 1. Block. T. Floyd County it is estimated  
for a uniform variation of  $10^{\circ} 45' E$ . from  
the S.E. corner of Sur. 37. Block. 28.  
H & G. N. Ry Co. Surveyed March 15<sup>th</sup> to  
April 2<sup>nd</sup> 1888. J. E. M. Williams State Surveyor  
do hereby certify that the above and foregoing field  
note. Truly and correctly describe the work as it was  
done on the ground and that the lines border  
ies and corners, with marks both north...

(-)

38 11



89 12

Sketch file 11.  
Crosby & Floyd Cos

Connecting line by  
G. W. Williams State  
Surveyor in company with  
J. B. Ammerman  
Beg: at Dewey's Lake in  
Crosby Co. to N. E. cor. of  
Sur. 10 Block I, thence to  
S. W. cor. of sur. N-83 Block  
D. B. by Mr. Chalk in  
Floyd Co.

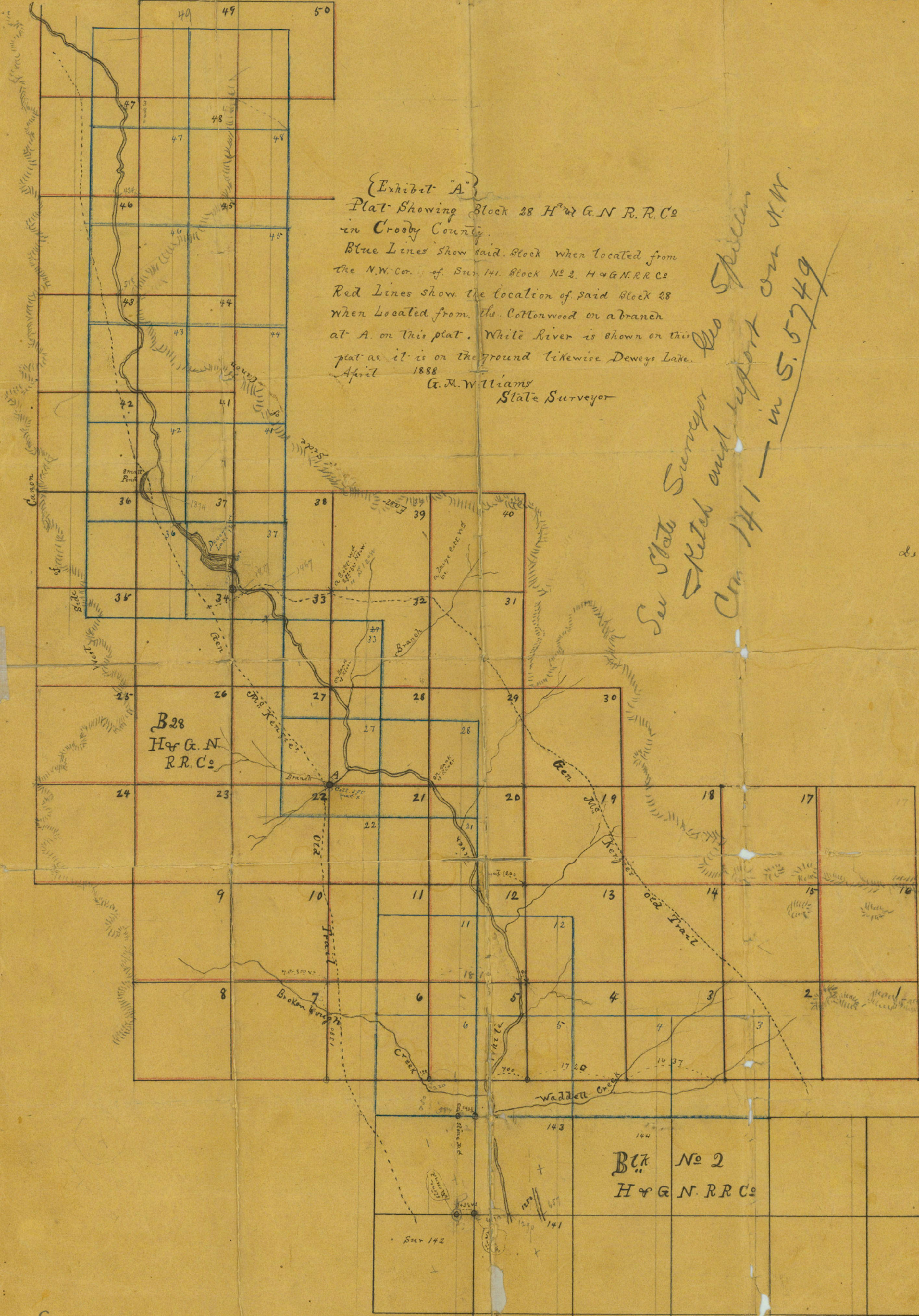
Filed April 26/00.

R. D. Shuler  
to file to C. W. C. K.

"See sketch which  
is a part of this.  
Examined &  
Approved  
G. W. Williams

and that the attached sketches are correct.  
Given under my hand in Austin Texas,  
this 26th day of April 1888.  
G. W. Williams  
State Surveyor





{Exhibit "A"}  
 Plat Showing Block 28 H & G N R.R. Co  
 in Crosby County.

Blue Lines show said Block when located from  
 the N.W. Cor. of Sur 141. Block No 2. H & G N.R.R. Co  
 Red Lines show the location of said Block 28  
 when located from the Cottonwood on a branch  
 at A on this plat. White River is shown on this  
 plat as it is on the ground likewise Dewey's Lake.  
 April 1888

A. M. Williams  
 State Surveyor

See State Surveyor's  
 Sketch and report on N.W.  
 Cor 141 - in S. 5749

B28  
 H & G N  
 R.R. Co

Blk No 2  
 H & G N R.R. Co

Sketch File No. 11  
 County Crosby



G. M. Williams  
Crowley & Floyd Co  
Connecticut

11

Sketch 11.

Crowley & Floyd Co

By G. M. Williams  
State Surveyor

of Crowley Co  
all connecting lines  
which is a part of the

Filed April 26/88

R. C. Mearns

Chief Clerk

& Approved.

E. van Rensselaer

Sketch 11

G

1910  
1930