

The accompanying plat represents the true relative position of sur. no. 43 Block A3 in blue with reference to Sabine Co. School lands in red. The Sabine Co. School Ld. L. connects from S.W. cor. of sur. no. 1, L. I & M. Co. at mouth of Yellowhouse Cañon identified by State Surveyor Geo. M. Williams in company with J. B. Ammerman March 1888, they ran a careful connection from Dewey Lake corner to S.W. cor. of Sur. no. 1, L. I & M. Co. and found the distance short, the red lines are his runnings, with the exception of Sabine Co. S. L. He ran Block 28 B & J. N. Ry Co. on a variation of  $11^{\circ}37'$  East and the balance of his work on Variation of  $10^{\circ}45'$  East.

All the surveys on the plat in black are constructed from original connections on file.

1st. Surveys no. 1, 2, 3 & 4 Block C, B & J. N. Ry. Co. in Floyd county on South line of League no. 4 Callahan Co. S. Ld. were surveyed July 25<sup>th</sup> 1877 by O. W. Williams, Depty. and no. 1 originally called to begin  $37,526^{\frac{56}{100}}$  vrs. North and  $39,878^{\frac{47}{100}}$  vrs. West from S. E. cor. of ~~X~~ 37 Block 28. In February 1878 the Draftsman examined and endorsed all four of the surveys correct, they were passed for patenting, and on Feby. 11<sup>th</sup> 1878 a certificate of correction was filed dated Feby. 4<sup>th</sup> 1878 instructing the Comsr. to correct the distance in connecting line of sur. no. 1, Blk. C. from  $37,526^{\frac{56}{100}}$  vrs. North to  $37,166^{\frac{41}{100}}$  vrs. North and the distance  $39,878^{\frac{47}{100}}$  vrs. West to  $38,462^{\frac{25}{100}}$  vrs. West, the file was re-called from the patent room and the correction applied Feby. 19<sup>th</sup> 1878 and patented accordingly on Feby. 28<sup>th</sup> 1878, the correction should also have been applied on field notes of sur. no. 2 Block C. In the mean time the other three surveys including sur. no. 2 were overlooked and patented on the old

Feb'y. 16<sup>th</sup> 1878, the old connection  
 connection, as patented should not contrroll, as said Sur.  
 No. 2 calls to begin on the N.W. corner of Sur. no. 1 same  
 Block, Hence the old connection is only considered  
 as a secondary call, the correct position of Block C  
 is designated in blue.

Blocks A1, A2, A3 & A4 were surveyed in the Spring  
 of 1877 by O. W. Williams Deputy Surveyor and call to  
 begin 10,585 wrs. North and 34,262 wrs. West from the  
 N.W. corner of sur. no. 1 Block C, S & G. N. Ry Co., the  
 beginning or S. E. cor. of No. 1 Blk A1 describes a  
 large earth mound containing a bottle & c, this corner  
 was not made by Mr. Williams at the time, he so  
 informed me on several occasions, but was made  
 about one year latter, or rather in the fall of 1877  
 by C. M. Counellee, it is presumed that he did not  
 have the correct starting point in locating said corner.

By referring to the Sketch you will see that survey  
 no. 43 Blk. A3 in black is entirely in conflict with  
 Sabine County School Ld. and coincides in E & W with  
 the Sketch of Mr. White, and goes to show that Blocks  
 A1, A2, A3 & A4 are located too far West. Provided  
 Block C, is correctly established from Dewey's Lake  
 or its corner can be identified. See report of  
 surveyors.

Austin May 1888. O. von Rosenberg  
 Examining draftsman  
 G. L. O.

The following is from Geo M. Williams report filed 4/26/88.  
 From S. E. corner of League No. 1, Eastland Co. a large flat stone  
 m'd. EL on north side, on the bluff about half way be-  
 tween top and foot, whence a flat rock m'd.  $\Delta$  brs  $S52^{\circ}4' E$   
 $36\frac{1}{2}$  wrs. Thence  $N38^{\circ}W$  910 wrs. Thence  $N45^{\circ}W$  at 1425 wrs crossed

Crawfish Cr. course of Crawfish Cañon S 73° W in all  
2325 vrs. Thence N 56 1/2° W 975 vrs. top of Bluff at edge of  
Plains in all 1300 vrs. Thence N 45° W 300 vrs. the Estacado  
road in all 2422 vrs. Thence North 209 vrs. set a stone  
12" x 16" mkd. EL 1888 and surrounded by 4 pits, for  
the N.W. cor. of said League no. 1 Eastland Co. S. L.  
from said stone dug a pit 16" x 16" which brs. N 50° E 13 1/2 vrs.  
a 2<sup>d</sup> 16" x 16" S 43 1/4° E 16 vrs. a large sand stone set by  
District Surveyor Knight for the N.W. cor. of the said League  
brs. East 958 1/2 vrs. and South 461 3/4 vrs. a pile of stone  
known as Counellee cor. of said League brs. South  
125 vrs. and East 958 1/2 vrs. Thence South 500 vrs. set  
a stone mkd.  $\bar{D}$  at the South end of a dry lake,  
and surrounded by 4 pits. Thence West 9 miles.  
Thence S 45° W 3 times 2688 vrs. = 8064 vrs. Thence West 5 miles.  
Thence S 45° W 11 times @ 2688 = South 11 miles and West 11 miles.  
Thence West 4 miles and 880 vrs. Thence South 361 vrs. to a  
large stone mkd. in Cañon made by Powell for the S.W.  
cor. of Sur. no. 1 Plk. A fr. wh. a small pile of stones  
in fork of Yellow house and North Fork brs. N 75° E  
204 varas.

See Statement of O. W. Williams in regard to  
surveys & c in Crook, Hale, Floyd, Lubbock  
Cos. dated Oct. 6<sup>th</sup> 1887 in Crook & Sketell files, and  
Sketell file // Crook & Floyd Cos. by Geo. W. Williams  
State Surveyor report & c in company with J. B.  
Ammerman Filed April 26<sup>th</sup> 1888.

J. von Rosenberg  
Draftsman

# Crosby Co. Sketches.

Explanation or statement  
of Dr. von Rosenberg  
Examining draftsman  
accompanying plat  
of surveys in Crosby  
Hall, Floyd and  
Lubbock Cos.

May. 1888.

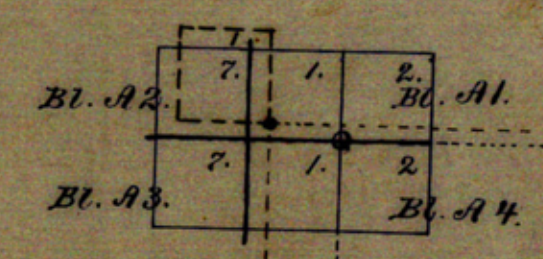
Original of this was  
in pencil.

10101

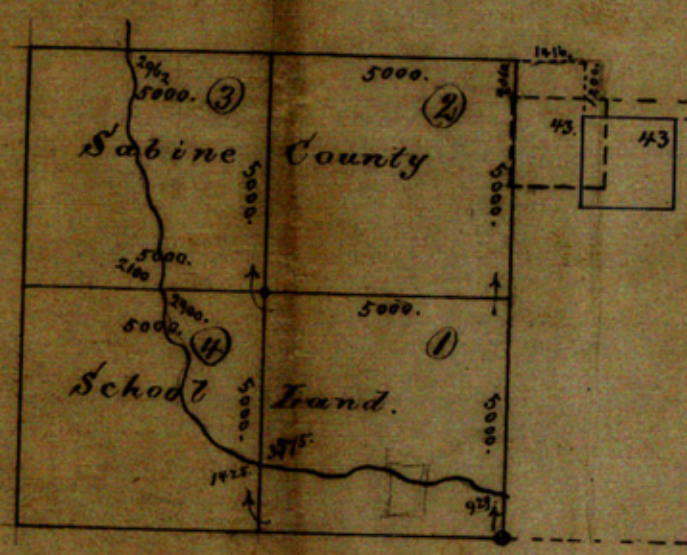
12

1700  
1416  
484

1700  
1416  
484

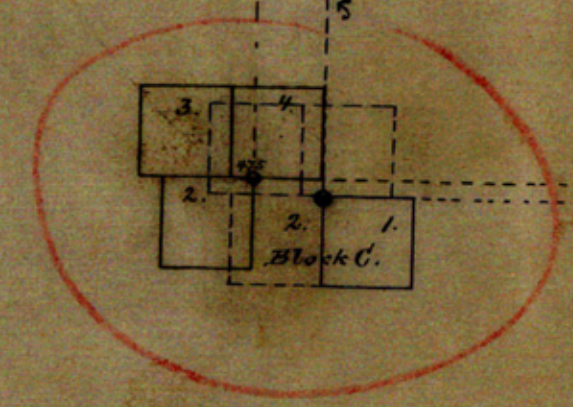


West 34,262 vrs.



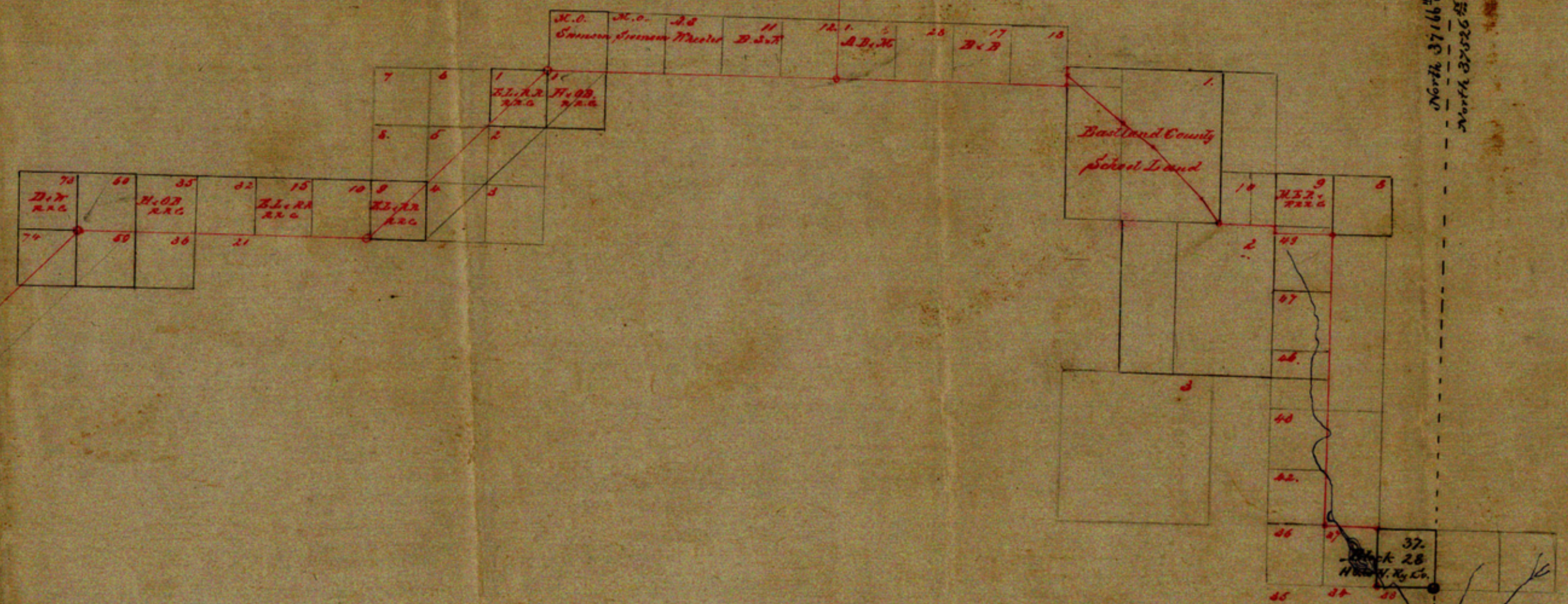
West 9 miles = 17,100 vrs.

6502 BACO



West 39,878 2/3 vrs.  
West 38,462 2/3 vrs.

North 20 miles = 38,000 vrs.



North 37 1/2 miles = 70,500 vrs.  
North 35 1/2 miles = 67,500 vrs.

COMPLETION # 11522

PART OF CROSBY CO  
JK FILE 26

By *C. von Rosenberg*  
Examining draftsman  
See his explanation  
May 1888



West 39 miles = 74,100 vrs.