

This Map Shows, in Blue Line, the old position of Block No 5, H. & T. C. Ry. Co., as taken from the County Map issued from the General Land Office in 1891, and, in Red Lines, the present position of said Block according to the corrected Survey made in 1889 by W. S. Mabry, State Surveyor, which corrected Survey is now accepted at the General Land Office.

This map also shows the conflict, of 2760 Acres, between the accepted position of Block 5, H. & T. C. Ry. Co., which was surveyed in 1889, and Block No 2, Texas-Mexican Ry. Co., which was surveyed in 1882 by G. N. Marshall, Deputy Surveyor, of El Paso Co.

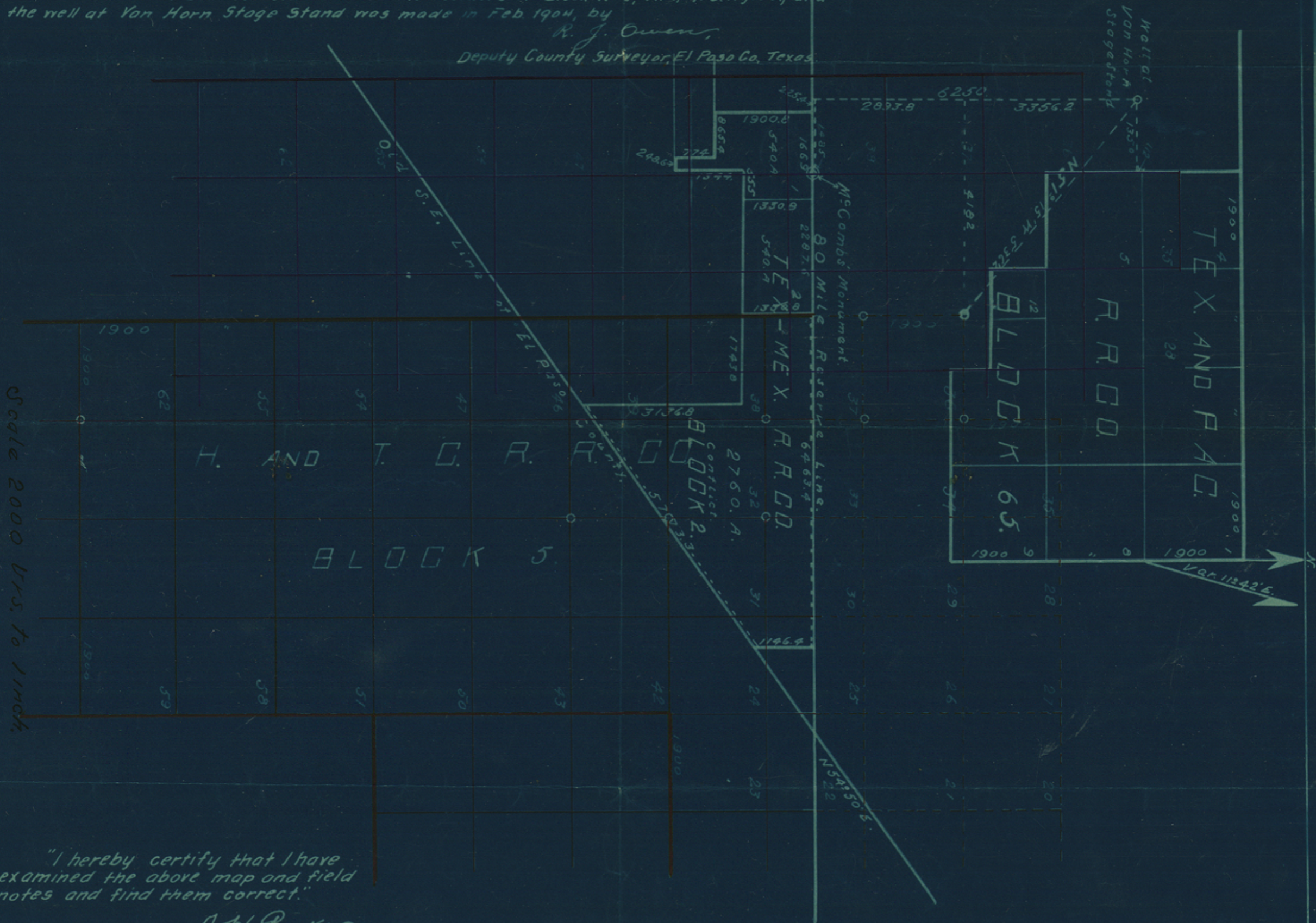
Connection between several established corners of Block No 5, H. & T. C. Ry. Co., and the well at Van Horn Stage Stand was made in Feb. 1904, by

R. J. Owen,

Deputy County Surveyor, El Paso Co., Texas.

— Note —

The Texas-Mexican Ry. Block No 2 is shown on this Map in Black Lines south of the 80 Mile Reserve Line.



Scale 2000 Yds. to 1 inch

"I hereby certify that I have examined the above map and field notes and find them correct."

A. H. Parker,

Surveyor, El Paso Co., Texas.

Sketch File No. 8

Culberson County

Block 5 H&T.C. - R. J. Owen, Sur

Filed Recd 3/19/04 -193-

J. H. Walker, Comm

File Clerk

Descriptive:

El Paso Skeds
file
Filed 3/19/04.
by Hon Thos W. Dodd
see copy in Rec. S. 42337