



Coexter 20176

A. J. ADCOCK

LAND SURVEYS
MUNICIPAL IMPROVEMENTS
HIGHWAY CONSTRUCTION

DAVIS L. DRESSER

PLANS AND ESTIMATES
FURNISHED ON ALL TYPES
OF ENGINEERING CONSTRUCTION

A. J. ADCOCK & CO.
CIVIL ENGINEERS
LICENSED LAND SURVEYORS
FIRST NATIONAL BANK BUILDING

PECOS, TEXAS April 24th., 1928.

RECEIVED

APR 27 1928

REFERRED TO MAP

Hon. J. T. Robison.
Land Commissioner,
Austin, Texas.

Dear Sir:

In making a survey to determine the location of Section 5, Block 90, Public School Land, Culberson County Texas, we find the following conditions which we feel our duty to report to you and have you rule thereon.

First, we obtained from your office a "working sketch" showing how this survey was affected by the lands surrounding it.

We began at a stone mound with slab marked 6 T 7 59 B 60 from which the West side of Gomez bears S 25 deg. E, the NE corner of Block 60, Tsp. 7, T. & P. Ry. Co.

From this point we ran North, at 1235 varas we pass a stone mound, the S E corner of Block 60, P. S. L., 16435 varas to a large stone mound and slab marked 5 T 6 59 B 60, the NE corner of Block 60 P. S. L.; this was to establish our course and check distances.

We then ran a right angles to the above line from said beginning point, West, at 11140.8 a point from which a fence corner heretofore set by some surveyor for the NE corner of said Section 5, Block 90 bears South 160 varas, at 11664.8 varas to a fence heretofore set by some surveyor for the East line of Block 61, P. S. L. At this point we took an observation on Polaris in Eastern elongation and find that a right angle from our East and West line to be 1 deg. 10' from Polaris in Eastern elongation. (This should have been 1 deg. 15.7' according to the Ephemeris.)

We ran at right angles to our East and West line and at 1010 varas we pass 21.2 varas East of a fence corner heretofore set by some surveyor and considered by adjoining owners the NE corner of Block 61, P. S. L. We continued North to 1235 varas expecting to find a marker for the NW corner of Block 90 but found nothing.

We turned at right angles and ran West 22891. 7 varas to a point in a line fence from which a large stone mound with slab marked P S L (1905 ? The figures are not very clear.), bears North 41. 4 varas. This stone mound has been accepted and used by all surveyors heretofore as a starting point for surveys in that part of the County. The Ranchmen have built

Pc

Counter 20177

A. J. ADCOCK

LAND SURVEYS
MUNICIPAL IMPROVEMENTS
HIGHWAY CONSTRUCTION

DAVIS L. DRESSER

PLANS AND ESTIMATES
FURNISHED ON ALL TYPES
OF ENGINEERING CONSTRUCTION

A. J. ADCOCK & CO.

CIVIL ENGINEERS

LICENSED LAND SURVEYORS

FIRST NATIONAL BANK BUILDING

PECOS, TEXAS

fences, provided waterings, and made other improvements on these surveys. We inclose herewith some photographs of this stone mound showing markings. You will note that it lies directly under a fence. This fence has been accepted as being the West line of Block 62 for many years and should your ruling of April 19th. and 20th. (by wire) stand these Ranchmen would be put to a considerable amount of expense to move fences and construct new waterings as one of considerable importance lies on this fence line.

The survey of Section 5, Block 90 is for Foster Bros. Kent, Texas who desire to purchase any excess or vacancy that may be found if placed East of this fence line.

As the matter now stands we are very much at a loss to know how to proceed.

A sketch showing our lines and how the fences are affected is also inclosed.

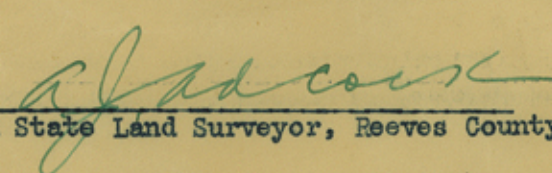
For your further information we wish to state that the land along most of the length of the East line of Block 61 is very rough and practically worthless from a grazing standpoint and the only interest Foster Bros. have in attempting to have the excess included in Section 5 is that it would make one tract instead of two.

Foster Bros. are very anxious to get this matter straightened out now while we are on the ground and would like to get a final ruling on it from you before we proceed.

Kindly give this matter your early attention as we will not attempt to complete our survey until we hear from you.

Thanking you in advance for this courtesy, we remain

yours very truly


Licensed State Land Surveyor, Reeves County, Tex.

Counter 20178

Pc'

Culberson County

Sketch and Statement

By
A. J. Addcock - 4/24/28

See letter to A. J. A. -
5/8/28

1680
276-277

Sketch File No. 14

Culberson County

skd. Statement by A. D. Addcock

Sec 5. Blk. 90 P.S. Land

Filed April 27th, 1928 ~~1928~~

J. H. Walker, Co

File

Descriptive: _____

GENERAL LAND OFFICE
AUSTIN, TEXAS

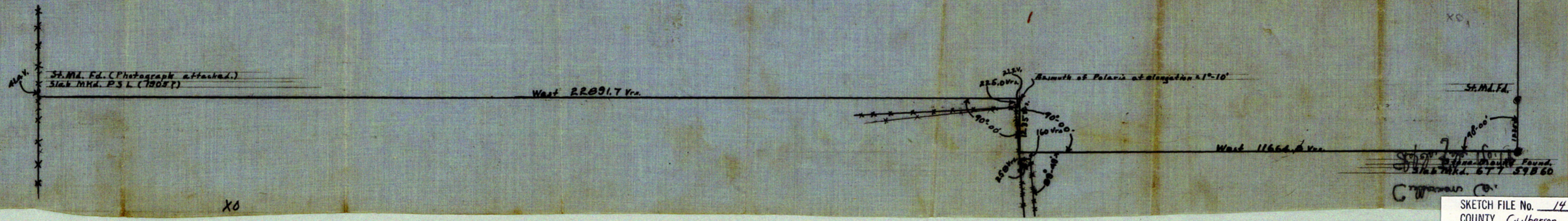


Counter 20179

St. Md. Ed.
Slab MKd. 677 598 60
276 598 60

North 16433 W

COULBERT 1/19/08



St. Md. Ed. (Photograph attached.)
Slab MKd. PSL (1905?)

West 22891.7 Yrs.

Azim. of Polaris at elongation ±1°-10'

West 11664.4 Yrs.

St. Md. Ed.

St. Md. Ed. Found.
Slab MKd. 677 598 60

X0

SKETCH FILE No. 14
COUNTY Culbertson