

D-729

COOL & STILLEY

CONSULTING ENGINEERS - LICENSED LAND SURVEYORS
REGISTERED PUBLIC SURVEYORS

2211 S. W. FRONT STREET

P. O. BOX 574 PHONE MU 4-8296

MIDLAND, TEXAS

February 25, 1959

RECEIVED

MAR - 5 1959

General Land Office

CLIFFORD C. COOL
J. C. STILLEY
G. E. SAUNDERS
D. ALSOP

File No. 35

CULBERSON County
SKETCH FILE

Filed March 5 1959

BILL ALLCORN, Com'r

By V.E.S.

Re: S.F. 15986, S.F. 15987,
S.F. 15988, and S.F. 15989
Culberson County, Texas

Honorable Bill Allcorn, Commissioner
General Land Office
Austin, Texas

Dear Sir:

I respectfully submit for your consideration the following report in connection with the reference applications.

John H. Clark surveyed the Texas-New Mexico boundary line for the U.S. Boundary Commission in 1859. This line followed the 32nd parallel from a point near El Paso to an intersection with the 103rd meridian at the S.E. corner of New Mexico. Along this line Surveyor Clark set 32 monuments, of which some were stone mounds, some were earth mounds, and some were adobe pyramids.

Several legislative acts were passed during the 1800's to encourage railroads to build in Texas. For the T. & P. Railway Company a 16-mile reservation was created which adjoined the south line of New Mexico. Later, this reserve was increased west of the 103rd meridian to a width of 80 miles south of the Texas-New Mexico line.

In 1878, Jacob Kuechler was appointed principle surveyor by the T. & P. Railway Company to survey the T. & P. lands west of the Pecos River. In accordance with his instructions, Kuechler commenced at a point on the south line of New Mexico 576 varas east of the Pecos River. This point was the

A

Counter 20295

D. 729

COOL & STILLEY

CONSULTING ENGINEERS - LICENSED LAND SURVEYORS
REGISTERED PUBLIC SURVEYORS
2211 S. W. FRONT STREET
P. O. BOX 574 PHONE MU 4-8296
MIDLAND, TEXAS

RECEIVED
MAR - 5 1959

General Land Office

CLIFFORD C. COOL
J. C. STILLEY
G. E. SAUNDERS
D. ALSOP

N.E. corner of Section 5, Block 57, Tsp. 1 established by Surveyors J. L. Peck and W. B. Champlin in 1876. Kuechler's field book shows that from this point he ran west, tying in Clark Monuments 24 and 25, to the N.W. corner of Block 57, Tsp. 1 for the beginning point of his surveys.

Kuechler ran a meandering line westward from this point across the T.& P. lands. In Blocks 63 and 64, Tsp. 1 he ran 15 miles along the state line searching for Clark's Monument No. 20, but was unable to find it. In his report to W. H. Abrams, Land Commissioner for the T.& P. Railway Company dated January 18, 1879, Mr. Kuechler wrote that the Indians had probably destroyed this monument. In Block 68, Tsp. 1, however, Kuechler again tied to the state line at Clark Monuments 16 and 17.

Mr. Kuechler set a marked stone mound at each mile interval on his meandering line, many of which were witnessed by trees or prominent natural objects. Using this ground work, Kuechler wrote field notes for the sections in the T.& P. blocks west of the Pecos River and called for adjoinder with the state line throughout his system of surveys.

In the early part of 1880, doubt began to arise concerning the accuracy of Kuechler's field work. Many claims were made that Kuechler's sections were from 80 to 100 varas excessive. Therefore, in 1883 Paul McCombs was appointed "Special Surveyor" by the General Land Office to check Kuechler's work. McCombs was instructed to run certain connecting lines, establish and mark the south line of the T.& P. reserve 80 miles south of the state line and tie in Kuechler's south

A1

COOL & STILLEY
CONSULTING ENGINEERS - LICENSED LAND SURVEYORS
REGISTERED PUBLIC SURVEYORS
2211 S. W. FRONT STREET
P. O. BOX 574 PHONE MU 4-8296
MIDLAND, TEXAS

D. 729
RECEIVED
MAR - 5 1959
General Land Office

CLIFFORD C. COOL
J. C. STILLEY
G. E. SAUNDERS
D. ALSOP

- 3 -

line of the reservation. After completing his field survey, McCombs reported that Kuechler's work was excessive as had been claimed.

Then in 1884 and 1885, Mr. McCombs under the direction of the General Land Office retraced Kuechler's survey lines. McCombs recovered many of Kuechler's original corners and, in almost every instance, the distance between the corners was found to be in excess of the original call. He also tied in Clark Monuments 22 and 23 on the north line of Block 58, Tsp. 1, and Monuments 16 and 17 on the north line of Block 68, Tsp. 1; however, like Kuechler, McCombs did not find Clark Monument No. 20. McCombs also set several additional section and block corners while in the field.

From his field work, McCombs prepared several maps of the T. & P. reservation, showing his distances and acreages for the sections. McCombs' construction changed the configuration of some of the blocks, broke adjoinder calls between corners along some of the block lines, and placed a north-south correction in the north tier of sections which adjoin the state line.

In 1884 and 1885, Commissioner Walsh of the General Land Office instructed the county surveyor of El Paso County to correct on his records the T. & P. field notes by Kuechler. The corrections listed on the instruction sheets were the distances and acreages found by McCombs and the corners he had set in the field. The General Land Office made the same corrections on their records and began issuing patents on these corrected field notes.

In 1911, Clark's boundary was retraced by the U.S. Boundary Commission. Mile posts were set and the Clark monuments which could be found were perpetuated

A 2

Counter 20297

COOL & STILLEY

CONSULTING ENGINEERS - LICENSED LAND SURVEYORS
REGISTERED PUBLIC SURVEYORS

2211 S. W. FRONT STREET

P. O. BOX 574 PHONE MU 4-8296

MIDLAND, TEXAS

RECEIVED

MAR - 5 1959

General Land Office

CLIFFORD C. COOL
J. C. STILLEY
G. E. SAUNDERS
D. ALSOP

- 4 -

by concrete markers. In the area under consideration only Monuments 16 and 22 were recovered.

I made a detailed survey of the area in the vicinity of the reference applications. Several Kuechler and McCombs' corners were found and identified. Most of these mounds were marked with a distinctive "T.P." cut on a cap stone. I did not find any original corners on the state line in Blocks 63 and 64, Tsp. 1. There are signs of old occupation about 430 varas south of the state line, and I found several stone mounds along this old occupation. None of these mounds bore the "T.P." mark, however, and none could be identified as original. The bed rock is so near the surface in this area that it is very difficult, if not impossible, to dig a post hole. The practice of piling stones around a fence post has been common for many years. These old mounds make the identification of surveyors' mounds very difficult. This line would be approximately 1795 varas north of the original S.W. corner of Section 6, Block 64 or 180 varas short of McCombs' call of 1975 varas.

Another line of old occupation was found about 100 varas north of the state line. Along this line a marked madrona tree was found in the vicinity of the N.E. corner of Section 6, Block 64, Tsp. 1, which Kuechler had witnessed by bearing trees. Along this same line of old occupation and in the vicinity of the N.E. corner of Section 3, Block 64 I found what could be the Indian trail called for in Kuechler's notes. Also, along this line the N.E. corner of Section 1, Block 64 would fall on the south side of a ridge as called for by

A3

Counter 20298

COOL & STILLEY
CONSULTING ENGINEERS - LICENSED LAND SURVEYORS
REGISTERED PUBLIC SURVEYORS
2211 S. W. FRONT STREET
P. O. BOX 574 PHONE MU 4-8296
MIDLAND, TEXAS

RECEIVED
MAR -5 1959
General Land Office

CLIFFORD C. COOL
J. C. STILLEY
G. E. SAUNDERS
D. ALSOP

- 5 -

Kuechler, whereas this call could not be satisfied along the old occupation south of the state line. Several mounds were found along this line, but I did not find any that were marked or would satisfy the field note calls.

Both Mr. Kuechler and Mr. McCombs were on the state boundary at Clark Monument No. 16 and Clark Monument No. 23 and the field notes of all the intermediate sections between these monuments call for the state boundary. Since I could not positively identify any Kuechler or McCombs' corners along the north lines of Blocks 63 and 64, Tsp. 1, I am honoring the field note calls for adjoinder with the state line.

The north lines of Blocks 63, 64, and 65, Tsp. 1 have been constructed along the Texas-New Mexico boundary, which is also the occupied position for these lines. The south line of the north tier of sections in Block 64, Tsp. 1 has been constructed parallel to the line between the original S.E. corner of Section 37 and the original S.W. corner of Section 42, Block 64, Tsp. 1 and through the original S.W. corner of Section 6. The south line of the north tier of sections in Block 63, Tsp. 1 has been constructed parallel to the line between the original S.E. corner of Section 42, Block 62, Tsp. 1 and the original S.W. corner of Section 42, Block 63, Tsp. 1 and through the reconstructed S.E. corner of Section 1, Block 64. The south line of Sections 1, 2, and 3 in Block 65, Tsp. 1 has been constructed parallel to the line between the original S.E. corner of Section 37 and the original S.W. corner of Section 39 of Block 65, Tsp. 1 and through the original S.E. corner of Section 7. All of these original corners were identified as the Kuechler corners which McCombs had found and adopted.

A4

Counter 20299

COOL & STILLEY

CONSULTING ENGINEERS - LICENSED LAND SURVEYORS
REGISTERED PUBLIC SURVEYORS

2211 S. W. FRONT STREET

P. O. BOX 574 PHONE MU 4-8296

MIDLAND, TEXAS

RECEIVED
MAR -5 1959

General Land Office

CLIFFORD C. COOL
J. C. STILLEY
G. E. SAUNDERS
D. ALSOP

- 6 -

The west lines of Sections 5 and 6, Block 63; Section 6, Block 64; and Sections 1, 2, and 3, Block 65, Tsp. 1 have been placed on the average McCombs' bearing of the area and through original corners within the respective blocks. The west lines of Sections 1 through 5, Block 64, Tsp. 1 have been constructed on the average McCombs' bearing and through corners established by prorating the distance between the original S.E. corner of Section 37 and S.W. corner of Section 42, Block 64, Tsp. 1. All of these original corners have also been identified as Kuechler's which were adopted by McCombs.

Attached you will find corrected field notes for Section 6, Block 63; Sections 2, 4, and 6, Block 64; and Sections 1, 2, and 3, Block 65, Tsp. 1, based on this construction. All of these sections have previously been patented, and my corrected field notes cover the excess acreage found in each section.

Respectfully submitted,

Clifford C. Cool
Clifford C. Cool

Encls:
Field Notes (7)
Plat (1)

A5

File No. 35 (1) (35)

GULBERSON County
SKETCH FILE

Filed March 5 1959

BILL ALLCORN, Com'r

By Clifford C. Cool

Parts of T. & P. Ry. Co.,
Blks. 63, 64. & 65, Tsp. 1
Along State Line
Surveyed Feb. 25, 1959
By Clifford C. Cool

(Sketch Attached
Here-to)

Respectfully submitted,

CLIFFORD C. COOL

Encls:
Field Notes (5)
Map (1)

Counter 20301

C. ALLEN
L. D. BARNHART
T. C. STILLEY
CLIFFORD C. COOL

Sections 1, 2, and 3, Block 63, Tsp. 1 have been placed on the average McCombs,
bearing of the area and through original corners within the respective blocks.
The west lines of Sections 2 and 3, Block 63; Section 6, Block 64; and

- 8 -

MIDLAND, TEXAS
P. O. BOX 524 PHONE: MU 4-8336
AND E. W. FRONT STREET

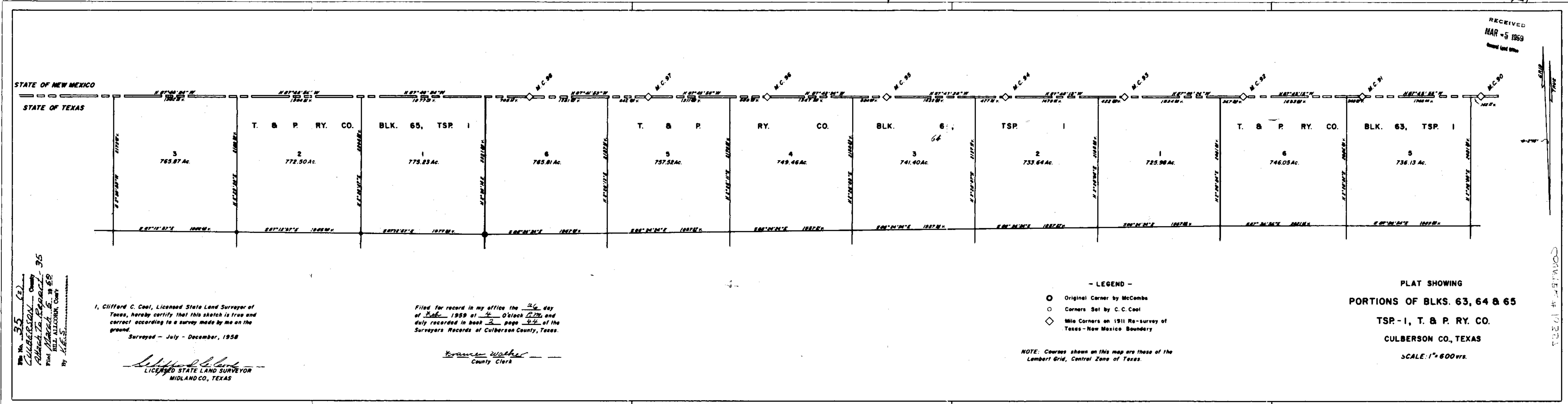
COOL & STILLEY

REGISTERED PUBLIC SURVEYORS
CONSULTING ENGINEERS - LICENSED LAND SURVEYORS

MAR - 2 1959

RECEIVED

RECEIVED
MAR - 5 1959
Culberson County



No. 35
 (2)
 CULBERSON County
 March 5, 1959
 Filed
 BILL ALCOBEN, Clerk
 BY H.E.S.

I, Clifford C. Cool, Licensed State Land Surveyor of Texas, hereby certify that this sketch is true and correct according to a survey made by me on the ground.
 Surveyed - July - December, 1958

Clifford C. Cool
 LICENSED STATE LAND SURVEYOR
 MIDLAND CO., TEXAS

Filed for record in my office the 26 day of Feb 1959 at 4 O'clock P.M. and duly recorded in book 2 page 44 of the Surveyors Records of Culberson County, Texas.

Kramer Walker
 County Clerk

- LEGEND -
 ● Original Corner by McCombs
 ○ Corners Set by C. C. Cool
 ◇ Mile Corners on 1911 Re-survey of Texas - New Mexico Boundary

NOTE: Courses shown on this map are those of the Lambert Grid, Central Zone of Texas.

PLAT SHOWING
 PORTIONS OF BLKS. 63, 64 & 65
 TSP-1, T. & P. RY. CO.
 CULBERSON CO., TEXAS
 SCALE: 1" = 600' vs.

COMMISSION # 10223