

D 323

8



COMMISSION
HERBERT C. PETRY, JR., CHAIRMAN
C. F. HAWN
HAL WOODWARD

State
TEXAS HIGHWAY DEPARTMENT

Alpine, Texas
June 22, 1960

STATE HIGHWAY ENGINEER
D. C. GREER

IN REPLY REFER TO
FILE NO.

. Culberson County General

Mr. A. T. Mullins
General Land Office
Austin, Texas

Dear Moon,

On the occasion of my visit to your office a few weeks ago, I mentioned to your Engineers that we had made a traverse from the Northeast corner of Section 44, Block 65, Township 1, T & P Survey to the Southwest corner of Section 30, Block 65, Township 2, which establishes one side of State owned Section 28. These gentlemen requested that I furnish them with the notes of this survey, if available. Accordingly, we are enclosing herewith a copy of the field notes and sketch showing our traverse. This material may or may not be of value to you.

Very truly yours,

Charles T. Holmes
Resident Engineer

CTH/cp
Enc. 2

RECEIVED
JUN 24 1960
General Land Office

File No. 36

GULBERSON County
SKETCH FILE

Filed June 24 19 60
BILL ALLCORN, Com'r

By V.E. Sterzing

Traverse from NE cor.
Sec. 44, Blk. 65, Tsp. 1. to
SW cor. Sec. 30, Blk. 65,
Tsp. 2, T. & P. Ry. Co.,
Culberson Co.

By Tex. Highway Dept.
Chas. T. Holmes,
Resident Engineer,
Alpine, Tex.

Counter 20303

8



TRAVERSE FROM NORTHEAST CORNER, SECTION 44, BLOCK 65, TOWNSHIP 1 TO
SOUTHWEST CORNER, SECTION 30, BLOCK 65, TOWNSHIP 2, T. & P. SURVEYS
IN CULBERSON COUNTY

Beginning at a large stone mound with plate marked 44-45/41-40,
from which a similar mound containing a flat rock marked "T. P."
bears West 1976 varas with declination of $11^{\circ} 50'$.

Thence South at 161.4 varas, cross the center line of a proposed
relocation of U. S. Highway 62 and 180.

At 346.3 varas a hub and tack in fence row.

At 904.8 varas a hub and tack in fence on low ridge.

At 1408.7 varas a hub and tack on high ridge.

At 1649.6 varas a hub and tack near crest of bluff.

At 1967 varas set an iron pin for corner 45-44/4-5.

At 1969.9 varas pass 0.25 varas West of a bronze plate marked
for corner.

At 2209.6 varas a hub and tack on high ridge.

At 2973.0 varas a hub and tack on West slope of mountain.

At 3741.5 varas an iron pin on a rocky ridge.

At 3881.1 varas pass 30.9 varas West of a square rock with
bronze plate marked "T. P.".

At 3911.0 varas set an iron pin for corner 4-5/9-8, from which
El Capitan Peak bears $N-72^{\circ}-W$. A cleft in Guadalupe Peak bears
 $N-17^{\circ}-W$ and the aforementioned bronze plate bears $N-50^{\circ}-10'-E$.

At 3952.3 varas, cross the center line of an abandoned location
for U. S. Highway 62 and 180.

At 5806.8 varas pass 4.9 varas East of a rock mound with a flat
rock shaft.

At 5855 varas set an iron pin for corner 9-8/16-17.

At 7799.0 varas set an iron pin for corner of 16-17/21-20, from
which a large rock mound with board and iron pin bears $N-75^{\circ}-30'-E$,
120.4 varas. A distant peak bears $N-83^{\circ}-30'-W$. El Capitan bears
 $N-43^{\circ}-10'-W$ and Guadalupe Peak bears $N-11^{\circ}-30'-W$.

At 9743.0 varas set an iron pin for corner 21-20/28-29.

RECEIVED

JUN 24 1960

General Land Office

Counter 20304

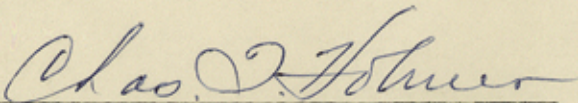
(2)

At 11,687.0 varas set an iron pin for corner 28-29/33-32, from which El Capitan bears N-34°-W and a nipple peak bears 0°-45'-W.

Thence West at 1976 varas set an iron pin for corner 32-29/31-30, from which an ancient fence post bears South 3 varas.

At 3952.0 varas set an iron pin in the West line of Section 14, Block 120, Public School Land, as the Southwest corner of Section 30, Block 65, Township 2, of T. & P. Surveys and the Northwest corner of Section 31, from which a bronze plate marked "K. R. A. - 1931" bears S-9°-W, 281.3 varas. An ancient fence corner bears South 21.1 varas, thence West 8.2 varas and El Capitan bears N-6°-30'-W and an iron pin set for this same corner on a traverse run in 1955 from the Northwest corner of Section 5, Block 119, Public School Land, bears S-9°-W, 9 varas.

This is to certify that the above is a true description of a traverse made by the State Highway Department in May 1957 on basis of which Right of Way Conveyances were prepared and Right of Way for a relocation of U. S. Highway 62 and 180 in Northwest Culberson County was secured.

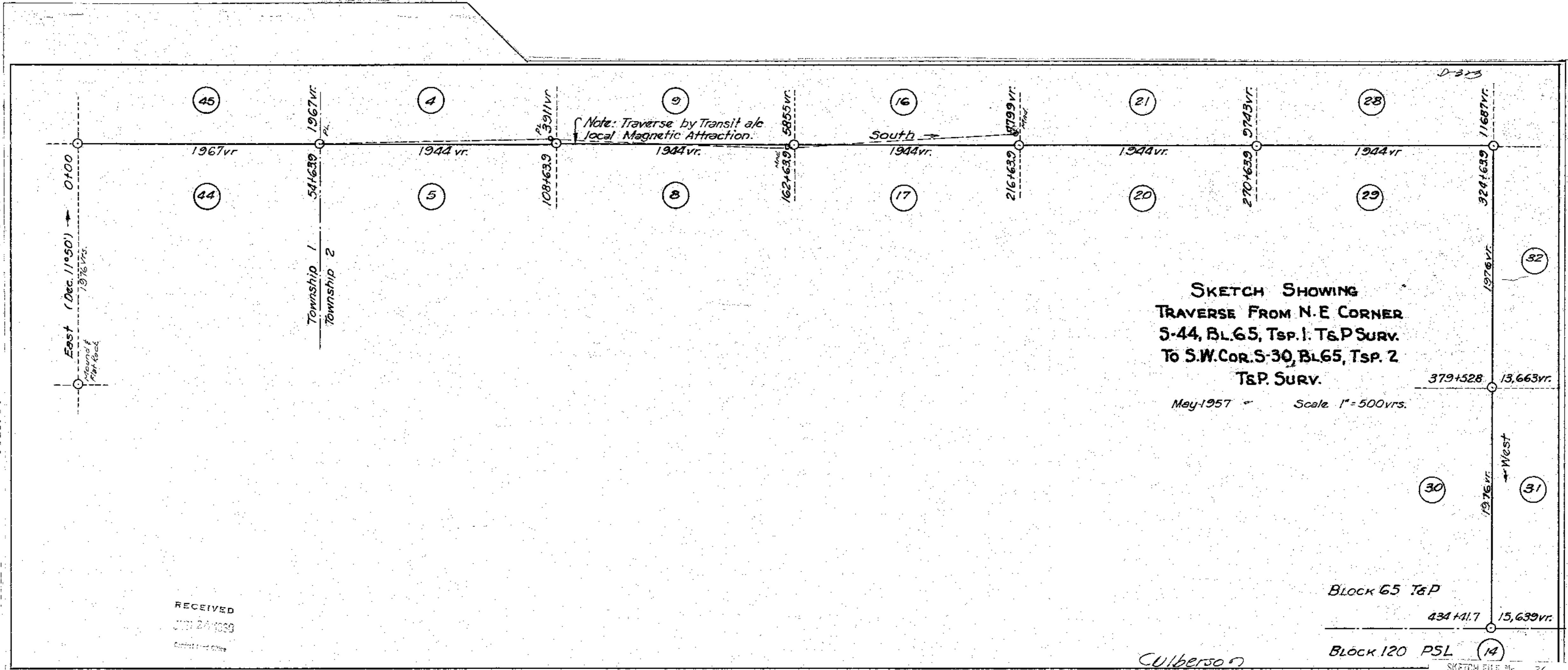

Chas. T. Holmes, Sr. Res. Engineer

RECEIVED

JUN 24 1960

General Land Office

Counter 20305



Note: Traverse by Transit a/c local Magnetic Attraction.

SKETCH SHOWING
 TRAVERSE FROM N. E CORNER
 S-44, BL. 65, Tsp. 1. T & P SURV.
 TO S. W. COR. S-30, BL. 65, Tsp. 2
 T & P SURV.

May 1957 Scale 1" = 500vrs.

RECEIVED
 JUN 24 1960

Culberson

Block 65 T&P

Block 120 PSL

SKETCH FILE No. 36
 COUNTY Culberson