

D678

TELEPHONE MU 4-6728

Filed for Information Only
Culberson Co. Sketch File 44

P. O. BOX 1666

JOSEPH W. LUCHINI

MIDLAND, TEXAS

August 7, 1968

RECEIVED

AUG 7 1968

General Land Office

REGISTERED CIVIL ENGINEER
REGISTERED PUBLIC SURVEYOR
LICENSED LAND SURVEYOR
TEXAS - NEW MEXICO

The Honorable Jerry Sadler
Commissioner, The General Land Office
Austin, Texas

Dear Mr. Sadler:

Enclosed is a survey plat of Public School
Lands Blocks 45 and 109 through 115, and W. N.
Holder SF Survey, Block 112, Reeves and Culberson
Counties, Texas, and a report on the survey of
these blocks.

Respectfully submitted,

Joseph W. Luchini
Joseph W. Luchini

JWL:fl

Enclosures

X 8

Counter 20331

D678

FILED FOR INFORMATION ONLY
Culberson Co. Sketch File 44

RECEIVED
AUG 7 1968
General Land Office

REPORT ON THE SURVEY OF PUBLIC SCHOOL LAND,
BLOCKS 109 THRU 115, BY A. H. PARKER
AND BLOCK 45, BY DENNIS CORWIN
CULBERSON AND REEVES COUNTIES, TEXAS

PURPOSE

The purpose of this survey was to locate sections in Block 111 and Block 45, P.S.L., and to ascertain the correctness of R. J. Owen's 1927 survey of this area.

SURVEY HISTORY OF THE AREA

From the study of field notes from the General Land Office, the sequence of the different surveys is as follows:

1. Blocks 57 thru 62, Twp. 2, T. & P. RR Co., were surveyed by Jacob Kuechler in 1878, and corrected by Paul McCombs in 1884, and reconstructed by Gulf - Sun, et al, in 1958;
2. Block 46, University Land, by Dennis Corwin, in 1884, and resurveyed by Frank F. Friend in 1936;
3. Block 45, P.S.L., by Dennis Corwin in 1884, only as a block six miles by eight miles, and no resurvey except on Section 1;
4. Blocks 42, 52, and 53 by Dennis Corwin in 1884, only as blocks six miles by eight miles, and resurveyed by R. S. Dod in 1911;
5. Blocks 109 thru 115, and other blocks, P.S.L., by A. H. Parker in 1900, and resurveyed by R. J. Owen in 1927;
6. Block 112, S.F. W.N. Holder, by A. M. Randolph, in 1907 with a reconstruction by Fred P. Armstrong in 1963.

SUMMARY OF THIS THIS SURVEY AND PLAT
(Blocks 109 thru 115)

From the study of A. H. Parker's 1900 field notes, he set five corners on the West line of Blocks 115 and 109. He used McCombs' Southeast corner, Block 62, Twp. 2, T. & P., for his Northwest corner of Section 7, Block 115, and he set six corners on the South line of Block 110 (as shown on plat), and several corners along the East lines of Blocks 101, 103, and 108, beginning

Van Horn (Culberson) N 40° E 59 miles
Pecos (Reeves co) N 60° W 36 miles

Counter 20332

RECEIVED
AUG 7 1968
General Land Office

at the North line of Block 60, Twp. 5, T. & P., north to the Southwest corner of Block 110, thence east along the South line of Block 110 for six miles, to the Southeast corner of Block 110.

In 1927 R. J. Owen resurveyed Blocks 109, 110, 111, 113, 114, and 115, using Parker's corners. Owen reconstructed these blocks in his survey to establish corners for sections in the vicinity of the Virginia, J. V. Smith, Dot, and Kyle mineral surveys. Most of these corners are still in place, including the Southeast corner of Block 111, which Owen set.

In my survey of several sections in Block 111, from 1965 to the present, I have found Owen's 1927 resurvey very compatible to Parker's survey, and have, therefore, used corners that he set in the establishment of section corners in Block 111 and in the reconstruction of these blocks and Block 45, P.S.L.

The different block corners in this survey are defined as follows:

1. The Northwest corner of Block 115 being McComb's Southeast corner, Block 62, Twp. 2, T. & P., and being Parker's Northwest corner;
2. The Southwest corner Block 115 and Northwest corner Block 109 being Parker's corner;
3. The Southwest corner Block 109 being F. F. Friend's Southeast corner of University Land Block 46, Southwest corner Block 109, also eight miles south of T. & P.;
4. The Southeast corner of Block 109 being a point east of the Southeast corner of Block 46, University Lands to the West line of Block 110;
5. The Northeast corner of Block 115 is east from McCombs' corner to a point north from Parker's Southwest corner, Block 110;
6. The Southeast corner of Block 110 being Parker's corner and the Northeast corner of Block 114 being a point north of Parker's Southeast corner of Block 110 and east of McCombs' corner Block 62, Twp. 2, T. & P.;

RECEIVED
 AUG 7 1968
 General Land Office

7. The Southeast corner of Block 111 being Owen's 1927 corner. From this corner the East line of Blocks 111 and 113 runs to Owen's Northeast corner, Section 13, Block 111, then to the Northwest corner Section 8, Block 45, P.S.L., then north to a point east of McCombs' Southeast corner, Block 62, Twp. 2, T. & P.;

8. The Northeast corner, Block 111, is constructed from Parker's Southwest corner Block 115, east through Owen's Northeast corner, Section 2, Block 111, and extended east to the Northeast corner of Block 111;

9. The Northeast corner of Block 113 was positioned as heretofore stated without regard to Parker's adjoiner call to the Southeast corner of Block 59, Twp. 2, T. & P. RR Co., or to the adjoiner call to the Southeast corner of Block 60, Twp. 2, T. & P. By placing Parker six miles east of his Southeast corner, Block 110 and north to a point east of McComb's corner, Block 62, T - 2, T. & P., I find Parker and Owen to be reasonably in the same position at the Northeast corner of Block 113, P.S.L.

It is my opinion that these T. & P. RR. Co. block corners were never fixed on the ground or by calls since the original survey of these T.P. RR. Co. blocks, and to date there are five or six positions of record--or being used--for the Southeast corners of Blocks 59 and 60, T. & P. RR Co.;

10. Other block corners are intersections of lines already described;

11. The interior corners of these blocks are intersections east-west and north-south lines from Parker's corners on the West lines of Block 109 west to, or through, Owen's corners in Block 111.

Parker's corners in the West line of Block 115 are west to the East line of Block 113.

12. Section corners in part of Block 111 are controlled by Owen's corners wherever found.

RECEIVED
AUG 7 1968
General Land Office

SUMMARY OF THIS SURVEY AND PLAT
(Blocks 112, P.S.L., 112 S.F. (W.N. Holder), and 45 P.S.L.)

The North line of Blocks 112, P.S.L., and 112 S.F. (W. N. Holder) is the South line of Block 58, Twp. 2, T. & P. RR Co.

The South line of Blocks 112, P. S. L., and 112, S.F. (W. N. Holder) are controlled by Randolph's corner set for the Southwest corner of Block 112 S.F. (W. N. Holder) and extending west to the East line of Block 113, P.S.L., and east to the West line of Block 57, Twp. 2, T. & P. RR Co., this being the North line of Block 45, P.S.L.

The Southeast corner of Block 45 is W. D. Twichell's (1901) call for the Southwest corner of Block C-21, P.S.L.

The east line of Block 45, P.S.L., is the West line of Block 57, Twp. 3, T. & P. RR Co., and West line of Block C-21, P.S.L.

GENERAL COMMENTS
(Mineral Calims and Mineral Patents)

In studying mineral claims and patents in Blocks 111 and 113 and 45, which have been placed on the ground since 1900, I find these surveys to be Parker's and/or according to his survey, and as resurveyed by Owen and other surveyors in recent years.

I believe that the east-west excess of approximately 120 varas in Blocks 108, 109 and 115 was injected by Parker because of the non-existence of a ground tie between his corner on the West lines of Blocks 109 and 115 and the East lines of Blocks 101, 103, 108, etc.

Parker apparently started his survey of Block 110 from McComb's corners and calls to Block 60, T-5, T. & P., then surveyed north along the East lines of Blocks 101, 103, and 108 to the Southwest corner of Block 110, and then east to establish the South corners of Block 110. Parker's adjoiner calls on Blocks 59 and 60, T-2, T. & P., do not check since these calls were apparently made on McComb's field notes calls on Blocks 59, 60, and 61; and, as we know, McComb's calls and the present position of Blocks 58, 59, and 60, T-2, T. & P.

RECEIVED
AUG 7 1968
General Land Office

are not the same.

SURVEY

The survey was made as follows:

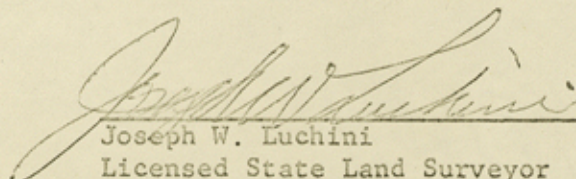
1. Triangulation stations "Marsh" and "Ross" were the foundation for control and position of Owen's Northwest and Northeast corners of Section 15, Block 111, P.S.L. Owen's other corners in Block 111 were tied by traverse.

2. Triangulation stations "Fortified," "Walker," "Rustler," "Radar," and "Pinnacle" were used to locate Parker's corners in Blocks 109, 110, and 115, and Friend's Southeast corner of Block 46, University Lands.

EQUIPMENT

Kern DKM2 and K&E Theodolites were used on all triangulation. These Theodolites read directly to one second.

July 24, 1968


Joseph W. Luchini
Licensed State Land Surveyor
Midland, Texas

RECEIVED
MAY 7 1938

T & P. RR. CO.
TSP 2

Luchini

36367.8 own
36360.16 Luchini
36313.88 CCC
208.32

36367.8 own
36360.16 Luchini
36313.88 CCC
208.32

BLK. 62

BLK. 61

BLK. 60

BLK. 59

BLK. 58

BLK. 57



LEGEND

- Corner by Paul McCombs 1864
- Corner by S. H. Parker 1900
- △ Corner by R. J. Owens 1927
- Monument by Fred Armstrong 1963
- Monument by Others as Noted
- Monument by R. S. Dod 1911

I, Joseph W. Luchini, hereby certify that this survey was made on the ground by me and that this plat is true and correct.

Joseph W. Luchini
LICENSED STATE LAND SURVEYOR
MIDLAND, TEXAS

SURVEY PLAT OF
P. S. L. BLOCKS 45, 109 THRU 115,
AND W. N. HOLDER SF SURVEY, BLOCK 112.
REEVES & CULBERSON COUNTIES, TEXAS

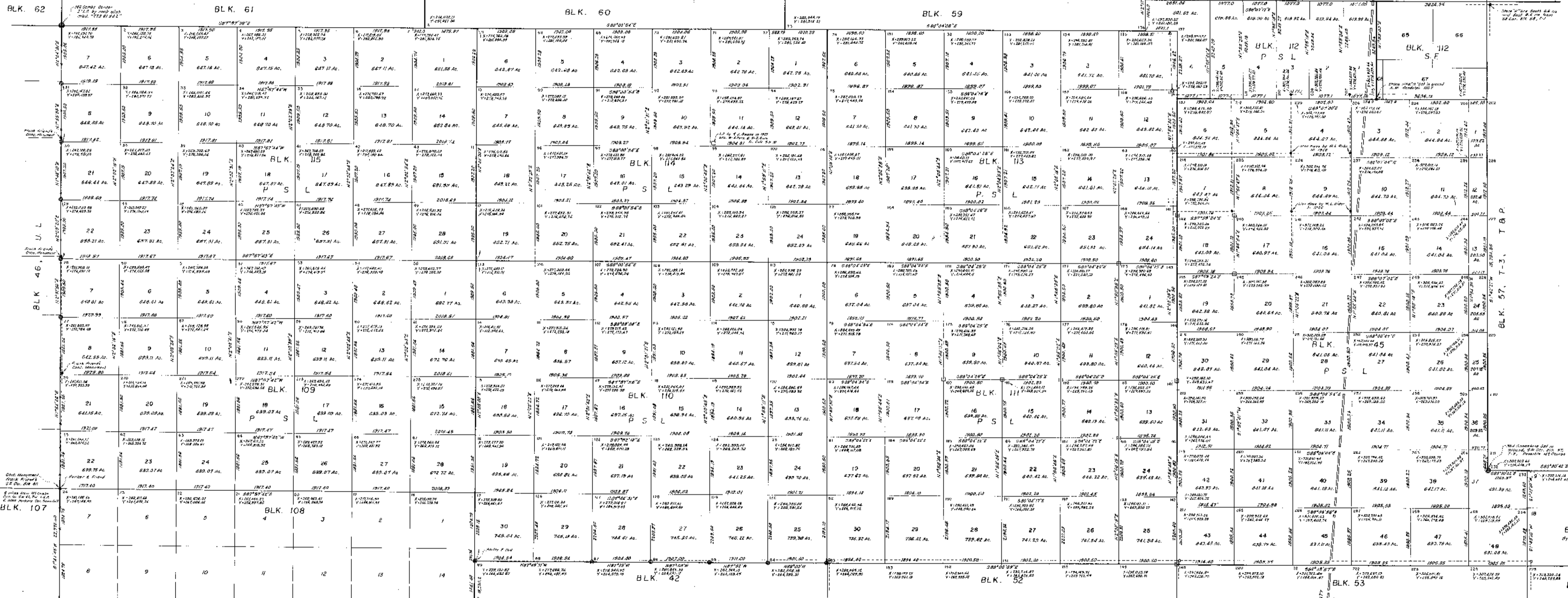
SCALE: 1" = 1000' VRS. DATE: 7-24-68

Culberson Co. Sketch File 44. Filed for Information Only.

SKETCH FILE No. 44
COUNTY Culberson, Texas

D678

T & P. RR. CO
TSP 2



RECEIVED
AUG 7 1968
Conserv Land Div

FILED FOR RECORD
AUG 5 '68
Culberson Co. Survey

I, Joseph W. Luchini, hereby certify that
this survey was made on the ground by me and
that this plat is true and correct.
Joseph W. Luchini
LICENSED SURVEYOR
MILANO, TEXAS

LEGEND

- Corner by Paul McCombs 1934
- Corner by A.H. Poirer 1900
- Corner by S.J. Chaves 1927
- △ Monument by Fred Armstrong 1935
- Monument by D.H. Asfured
- Monument by R.S. Dool 1911

NOTE: This Survey Based On U.S.C. & G.S.
Triangulation System, Lambert Grid,
Central Zone.
Survey Report to Accompany This Plat.

SURVEY PLAT OF
P. S. L. BLOCKS 45, 109 THRU 115,
AND W. N. HOLDER SF SURVEY, BLOCK 112.
REEVES & CULBERSON COUNTIES, TEXAS

SCALE: 1"=1000' DATE: 7-24-68

Culberson Co. Sk. File 44
FILED FOR INFO

SKETCH FILE NO. 44
COUNTY Culberson (L of O)

Culberson Co Sketch File 44
Filed for Information Only