

From R. S. Dod
Alpine
Tex.

POSTAGE DUE 7

8/15/14



Hon J. T. Robison
Commr. Genl. Land Office
Austin
Texas

- File 9 -
Dillon Co.

CONTENTS

1. Letter of Inquiry
2. Application to Surveyor
3. Field Notes
4. Application to Purchase

Counter 20357

Alpine ,Texas,
Aug. 15 1914

Hon.J.T.Robison
Commissioner Gen.Land Office
Austin,Texas.

Dear Sir,

I wrote you at Marfa some days ago but I do not suppose that the letter reached you.

I wrote to say that I had notified Mr.Hunnicuttt on the first of July that I wished to resign my position under him, but would work on until he could supply my place. I waited until the 6 th of August when I again brought the matter to his attention, offering to stay until he could get some one else. He said I could go at once as he could go on with the work with the force he had.

I came to Alpine and have prepared a report of progress covering the work done while I was in the field, which I forward today to your office.

I did not know whether the Board would wish me to make such a report or not , but as I had done most of the instrument work in the field I thought I had better report the facts as found.

May I ask you to inform the Board of my resignation, and offer them the report if they desire it.

I had supposed that Mr.Hunnicuttt would have notified the Board of my intention so that they could fill my place, but I judge that he did not do so. I hope that my resignation will not hinder the work in any way, but it was impossible for me to continue under the conditions.

Respectfully

Rd Dod

a

1.00

League	Boundaries		Acreage	Excess	Average per		Shortage
	N. & S.	E. & W.			League	League	
1	7261	3428.3	4409.			17.	17
2.3.4.	5037.5	15068.	13474.6	160.		53.3	
5.6.7.8							
9.10.11							
12.13	5022.5	45050.	40077.	225.		25.	
14	6290.	4055.	4517.7	89.		89.	
15	1756.	14310.	4450.8	22.8		22.8	
16	1756.	14310.	4450.8	22.8		22.8	
17.18.							
40.41.	10105.5	10079.7	18042.	330.		82.5	
19.20.							
38.39.	10131.	10069.	18067.7	355.7		88.9	
21.22.							
36.37.	10080.	9840.	17568.5			143.5	143.5
23.24.							
34.35.	10079.	10041.	17925.6	213.6		53.4	
25.26.							
32.33.	10079.	10048.5	17930.	218.		54.5	
27.28.							
30.31.	10054.	10051.	17898.6	186.6		46.6	
29.	7351.	3375.6	4395.2				32.8
55.	7303.	3323.	4298.4				129.6
56.	7261.	3162.	4066.				361.
51.52.							
53.54.							
57.58.							
59.60.	10081.	20065.5	35828.9	404.9		50.6	
47.48.							
49.50.							
61.62.							
63.64.							
71.72.							
73.74.	15066.	19859.	52995.0				141.
45.46.							
65.66.							
69.70.	15071.	10131.	27044.2	476.2		79.4	
42.	6301.	4000.	4464.2	36.2		36.2	
43.	3372.	7367.5	4482.8	54.8		54.8	
67.68.	11155.	4503.	8897.1	41.1		20.5	
89.90.							
110.	Course & Dist.		4428. each.				
111.							
112.113.							
114.115.	10102.	10040.	17964.5	252.5		63.	
85.86.							
87.88.							
91.92.							
93.94.							
106.107.							
108.109.	15048.	20170.	53760.6	624.6		52.	
75.	4993.	5224	4620.	192.		192.	
104.105.							
95.96.							
83.84.	15096.	10141.	27115.7	546.7		91.3	
76.77.							
78.80.							
81.82.							
97.98.							
99.101.							
102.103.	20063.	15000.	53304.8	168.8		14.	
119.120.							
121.124.							
125.126.	10000.	14759.	26141.8			-71.	426.
116.117.							
118.127.							
128.129.	10000.	15163.	26857.4	289.4		48.2	
79.	7261.	3146.	4046.0	4911.7			3822
100.	7261.	3138.	4035.8	2373.3			392.2
122.	7512.	3134.	4080.	2538.4	20 acres pr. league		348.
		3018.					2373.3

a

Report of Progress in

RESURVEY
of
Capitol Syndicate Grant ,
covering Leagues lying in
Dallam Co. Texas
by R.S.Dod
Ass.Sur.

Object of Resurvey.

To determine the actual position on the ground of lines and corners of the Leagues included in the Capitol Syndicate Grant, as described in the original field notes and Patents.

Data for the survey.

Copies, from the General Land Office, of original field notes for the Capitol Leagues by Munson.

- " of corrected field notes for the Capitol Leagues by Mabry.
- " of field notes from the Patents.
- " of Munson's original sketches,
- " of Mabry's sketches and reports.
- " of original and corrected field notes for senior Blocks of land adjacent to the Leagues.
- " of field notes and sketches of unoccupied strips of land found and reported as adjacent to Leagues, and accompanying reports of County and State Surveyors.
- " of reports on County lines and their connections with League corners.
- " of maps showing work done for the Capitol Syndicate in sectionizing a portion of the leagues and remarking original League corners.

Extracts from the report of the Boundary Commission on the Texas & New Mexico line, giving description of monuments and course of line.

Method of Resurvey.

Transit with 5 1/2" Needle was used in running the lines.

Course was determined from Solar readings on the lines, checked by observations of the North Star at elongation, and compared with the courses given between monuments on the State line.

Magnetic variation. The average reading of the needle, morning and evening, on the meridian was 12° 55' E.

A daily change of from 5' to 25' was observed.

No serious local attraction was noted except near the west line of Leagues 80 & 89, where the extreme reading was 57' to the east of normal.

A front rod was used to set points on the lines and flags set at these points for back sights. The line of back flags could generally be seen for several miles.

Where windmills were conveniently situated, angular measurements were made from the line, as a check on course and distance.

The lines from corner to corner of original work were found to vary from 5' to 45' & to the right of true course.

Distance.

A 100 vara tape, tested by another 100 vara tape already itself tested, and checked by standard 100 foot tape, was used for measuring distance. The tape was levelled on steep slopes, the angle of gradual slopes was measured and correction made on the ground.

Connecting lines were run to the State line ~~some~~ at points some 30 miles apart, and to the Range line along south line of the Neutral Strip, as a check on the resurvey measurements.

Preliminary note.

On looking over the original field notes of the Capitol Leagues, it will be noted that the greater number of marked corners call for an earth mound and four pits. The original corners identified on the ground showed circular pits, 2' to 2 1/2' in diameter and 5" to 10" deep, lying

North and South, and East and west about 20' apart. In a few instances there was a low flat mound in the centre, presumably made by the earth taken from the pits. Where the pits happened to have been made ~~xxxx~~ in a firm soil and especially where water had settled in the pits before they had filled up with loose dirt, the grass had a good ~~xxx~~ start, and we found the pits well preserved and easily identified, as at S.W.114, N.E.70, S.E.74 and elsewhere.

Where a pipe had been placed in the mound to remark the corner, we found that the cattle had pawed around it and in places had obliterated the original marks. At some corners we found two or three plain pits, the balance dim or entirely wiped out by trails or surface erosion.

The water settling in the pits caused a thicker growth of grass than the turf on the level, and this would be noticeable at some distance.

Where the pits had been made in sandy land all traces of the original work had disappeared. In such soil we found that in course of time the wind had eroded the surface forming numerous pits of various sizes, and had also piled the sand up in mounds and hillocks. In such conditions it was almost impossible to distinguish the mounds and pits made by a surveyor from those made by nature, except by the regularity in position of the artificial pits.

Had the original corners been put in exact course and distance, the pits would have been more easily identified, but as both course and distance between original corners, were found very irregular, they did not help much in identifying doubtful marks that would be found from 30 to 250 varas out of place. The method used was to run course and distance called for from some established point, and then hunt for the original marks.

If marks were found at some distance from the position called for, their position would be noted and they would be connected, if possible, with old work further on for better identification.

For instance, running south from original S.E.33, at 5000 varas nothing was found, on at 6797 varas crossed Rito Blanco, call 6780, on at 10000 varas nothing found, set a stake and hunted for pits. Found 4 good pits in a square, 108 varas west and 81 varas south of stake. The ground around showed a good many natural pits, but irregular in shape and position.

The error was too great to permit of accepting these four pits under surrounding conditions without further corroboration. Later we connected these four pits with four plain old pits 5018 varas east and 4993 varas south at S.E.74, which identified both as original marked corners, although the S.E. corner 74 was 242 varas east of a line run from an original corner on the south.

Some few rock marked corners are called for in the original field notes, the number and size of rocks being given, or a rock mound called for. But although we found the rocks called for, in many instances, they were not as definite as would be expected from the fact that they were laid on the ground and were easily moved. The few that were set in the ground were almost certain to be pawed up by the cattle. For instance, one large rock set in the ground by Mr. Mabry at S.E.116 Blk.47 1/2, was found lying in a pit a foot or more deep and 4 or 5 feet across, where the cattle had pawed around it. The rock was 2 1/2' x 14" x 6", and had probably been set a foot or more in the ground. It looked as though it had fallen where it was first set, but there was no certainty about it, especially as the distance from the mound and pits at the N.E. corner was not exact.

Mountain bearings are given on Rabbit Ear peak at certain corners and it was hoped they would give something definite as to course, variation and exact location of corners, but, unfortunately, the peaks are so broad that no definite readings could be had; the readings could be made to vary from 5' to 15' and still hold the call for the peak.

The calls for creek crossings were often very unsatisfactory. They were almost always given in round numbers, showing that they were probably approximate estimates and not exact measures. Many of the creek beds are in deep sand and consequently shift their channel with every flood.

In a few cases, where the banks were in a firm soil, the creek calls were very helpful, as at N.W.2, and S.W.109. At S.W.129 the call for the creek is south 500 varas, we found the middle of the creek, at present, at 318 varas, but at 520 we could distinctly see the line of firm turf once the south bank of the stream, and trace it for some distance. The shifting sand had been piled up on the north side to a height of 50 feet, had this been piled on the south side we would never have seen the old channel.

On the whole the most satisfactory evidences of the original work were the mounds and pits, where turfed over they were very plain, with distinguishing marks of age, and when found were absolutely where originally made, they were immovable; we found enough of these old pits to fairly well locate the outer boundaries and many of the interior lines.

No attempt is made in this map and report to distribute excess or locate definitely the unmarked corners. Lines are closed from point to point simply to give convenient areas for ~~xxx~~ calculating acreage. The sketch and report show what lines were run, and corners found, and their relative position on the ground.

A number of connections were made with the section corner pipes put in by Cap. Howren for the Syndicate, which showed that the work had been carefully done and was as represented on their maps.

History of survey.

Work began at the Cheney and Smith Monument of sandstone, set for the intersection of the 103 merid. W.L. and the parallel $36^{\circ}30'$ N.L. easily identified by the marking on the rock itself. We noted another monument, said to be the Kidder monument, set for the same point, but 223.4 varas west and 54.3 varas south of the Cheney Mt.

We ran from the Cheyney Mt. locally known as the Cimmaron Mt., 4157.4 varas west and 124.3 varas south to the Clark Monument for the N.W. Corner of Texas as remarked by the Boundary Commission by a concrete ~~xxxx~~ monument.

This was the point given in the field notes as the N.W. corner of League ~~xxxx~~ No. 1.

From this initial point, running east 3454 varas and south 4.4 varas we reach a point where W.S. Mabry describes finding an original rock topped mound and 3 pits set for N.E. cor. League 1. This point is in a road, $3\frac{1}{2}$ varas north of a fence, and we could find no trace of the corner described.

A line run from this point S $21^{\circ}W$ 1756 varas reaches a rock marked X as described in the original field notes and fits the calls for the creek, 120 varas south and 10 varas east. There is a large rock set in the ground at this corner, said to have been placed by Mr. Morris a surveyor for the Syndicate.

At 5042 varas S $21^{\circ}W$ from this N.W. cor. 2, we found a rock marked X lying in a wagon rut, showing it had been placed there recently, but it fits connections from a corner east as shown in sketch.

Distance for S.E. 1 fell in a plowed field, no corner found.

At 5029 varas S $21^{\circ}W$ from S.W. 2, we found a large rock (Morris) set in the ground, on a ridge, and some rocks scattered round it, a rock mound on a divide is called for.

At 14612 varas from N.E. 1, we cross a creek, course N $43^{\circ}E$, but did not find the rock mound called for at S.E. 29.

At 5000 varas S $21^{\circ}W$ from S.W. 28, or 16756 from ~~xxxx~~ N.E. 1, is in a field found a large flat rock lying some distance from the line, this point should be S.W. 30. On at 2508 cross Rito Blanco, course S $52^{\circ}E$, call is 2380, but later we find 123 varas excess in this line, which, if it fall in League 30, ~~xxxx~~ ~~xxxx~~ reduces 2508 to 2385.

At 20123 varas S $21^{\circ}W$ from N.W. 2 we found a rock set in the ground (Morris) an iron pipe beside it (Howren) and three old pits, the fourth very dim, on at 36.5 varas another rock and pipe and 4 pits not plain. These corners were accepted from their relative position and original marks, as the S.W. cor. 54 and S.E. cor. 55. *from S.W. 54*

At 25063 varas S $19^{\circ}W$, we reach a point on the old X I T fence which is 25000 varas west and 303 North of original S.W. 106. This should be the S.W. cor. 101 and is not far off the course from N.W. 2 to S.W. 54, but we found no trace of original corner at this point. The fence running from S.W. ~~xxx~~ 106 runs about 20' north of west for a while and then turns about 40' north, it is supposed to have been put up while the old league corners were still to be found. If the corners were under or near this fence line, the cattle and horse trails and fireguards would have destroyed the marks.

At 5253.5 south of the S.W. cor 54 we reach a trial line from the east as shown on sketch.

At 15077.5 south and 105 east of S.W. 54 reach a point which fits the calls for the creek crossings at S.W. 80 fairly well. The call is a mound & 4 pits 40 varas north of the creek and 370 west, and 970 across the bend.

This point is in deep wind-drifted sand, but the south bank of the creek is fairly firm and the east side of the bend is firmly turfed. The measurement

South 1890 varas found large rock lying in a pit. Call is large rock set in the ground. Rock probably lies where pawed up by cattle. May have been moved, but finding it, further identifies N.E.116.

Returning to fence where line from west reached it, line run north 8'E 6306 varas reaches a pipe set by Cap. Howren years ago in a dim circular trench, no trace of which remains today, all sand, *set for NE 14*

From this pipe N 89°44'W 4060 varas to an iron pipe and some rock probably the original N.W. cor 14.

From the pipe at N.E.14 above described, ran north 2472 varas and west 2571 varas to a cone set for S.E. cor. Sec. 32, T 1 N, R 6 E. giving check on measurement east from Cimmaron Mnt. (Cheney)

On looking over field notes, it will be noted that there is a continuous (with exception of S.E.5) row of marked corners called for along sbl 2.3.4. &c ~~to~~ to 13, this is the line above described. Again, 10000 varas south of this line, another continuous line of marked corners is called for except S.E.38, & S.W.37.

To retrace this line we returned to a point S 21'W 15072 varas from the N.W. cor 2. and ran east. (For courses between corners see sketch).

At 5007 varas found 4 old pits, rock (Morris) set in corner, S.E.30, line crossed creek at 2128 varas.

On east, at 2418 & 3476 varas cross crk, at 5044 varas found old rock mound, rock set in corner, S.E.31.

On east, at 5015 varas a point in bend of creek which fits fairly well for S.E.32, but in sand, and no corner found.

On east 5046 varas, 10061 in all, found 3 plain old pits, 4th dim. S.E.33

On east at 10009 varas reach a point on a fence running S 40'W from the large rock set in the ground at N.E.23 & S.E.7 as above described

Looking over field notes it is noted that there is no marked corner for S.E.36, but one is called for at N.E.36. As there are no marked corners south or west of this N.E.36, it looks as though it had been made by a diagonal from S.E.35 or N.E.21. Not finding S.E.35, we went to N.E.21 already described, and where the call for the creek S.W. suggested a line run that way.

We ran S 45°W 7171 for N.E.36, but found nothing though in good ground, on 14142 to a point 54 varas west and 76 south of the point reached from the west. We searched carefully for this corner but failed to find it.

We returned to the N.E.21 and ran south, at 5000 varas, nothing. At 10000 varas nothing, at 14000 a lake on 15170 varas S 29'W from N.E.21 found a 3" pipe set by Cap. Howren for the S.E. cor 47, when he found 4 old pits. Three of these are gone, wiped out by a trail running by the pipe, one good pit remains.

Not finding S.E.21 or S.E.37 and as there was no call at S.E.38, we went to S.E.11, N.E.19, as above described and ran south,

At 2134 cross Rabbit Ear Crk. at 5000 varas found nothing. There was a sink formed probably by Coyotes or badgers digging long ago, which was about where the corner should have been.

On at 10031 reach old rock mound and pipe, original S.E.39 with a lake N.E. about a mile.

On S 28'W 3920 varas found rock set in the ground, probably original S.W. cor. 44,

On south at 970 cross creek, at 1118 pipe under fence for S.E.45.

On S 25'W 4480 4 old pits and pipe, S.W.67, on 558 varas, 5038 in all, found 4 old pits and pipe, S.E.66.

Thence N 89°45'W 5045 to an earth mound with rock marked X, and 4 good old pits, S.W.66,

Thence North 28 varas another earth mound, rock marked X, and 4 good, old pits, a lake N 40 varas N.E. (not N.W.) The S.E. cor. league 55. These corners were two of the most satisfactory marked corners found. They were unmistakable and gave data for comparison of other more doubtful corners, as to age general appearance and position of pits.

Later a line was run west 5000 from S.E.65 to N.W.70, nothing found, thence south 5000 to S.W. 70 nothing found. This run should have been continued west to S.W.71, and a line run from N.W.70 to S.E.47.

There are no marked corners called for at S.E.14, N.E. or S.E.42, N.E. or S.E.43 in fact none of the outside lines seem to have been marked except N.E.14,

All we could do for these outside lines was to take course and distance from nearest original corner and connect across to adjacent blocks.

Returning then to the rock mound described above as S.W.14, we ran south,

At 2405 found rock mound for N.W.42, 3779 rock mound for S.E.17 (5038 from N.E.17 as above)

From S.E.17 south ,at 575 cross creek,4927 varas (6301 from N.W.42) 4pits & a pipe for S.W.42,on 115 varas ,5042 in all to 4 pits & a pipe for S.E.41.

Thence west at 3306 find a rock mound & pipe N.W.43.at 5040 rock mound S.E. corner 40.

On west at 5039 rock mound & pipe S.E.39 as before described.

Returning to N.W.43,ran south,at 3362 fence,3372 row of pipes,

At 1950 south of fence a point 182 varas east of rock set for S.E.resurvey corner of sec.69 Blk.47 1/2.

From this S.E.cor 69,N 89°50'E 1894.5 a rock S.E.70,

" 1893.5 " S.E.71,

" 1894.5 " in a drain,S.E.72,

" 1894.5 fence post and rock,S.E.73

Thence N 24'W ~~xxxx~~ 1897 varas to a pipe near fence corner.

From S.E.73 the fence is continued north and can be seen for several miles,it is crooked,but where it disappears over the rise at some 4 miles it is north of the S.E.cor.73.

Returning to point south of fence and 3372 south of N.W.43,we ran west, ~~xx~~ (N 89°43'W) 2314 varas to a pipe set for reentrant corner in sbl 44.

Thence south 553 varas to a pipe set for cor.on sbl 44,from this pipe a brick and some rock bear east 216 varas and south 24 varas ,placed ~~xxxxxx~~ ~~xxxxxx~~ in the wbl sec.69 Blk 47 1/2 as reported by Sam Killeen,Jack Dist.

From above pipe set for cor in sbl 44,N 89°30'W to a rock set in the ground for S.W.44 as described above.

There are no marked corners called for on east lines of leagues 67 & 68 so we had to take course and distance and connect with adjacent block.

From N.E.cor.69 as described above we ran south,at 4998 1/2 found iron pipe 53 varas west,found no trace of original corner S.E.69,

on south 1650 to a point,

Thence east at 645 a pipe marked B2 57,on east 345.5, 990.5varas in all an iron pipe marked N.W.B 1,

From this pipe on east at 3519 pipe marked B2 63,on at 3800 sand, 5700 found mound and pits and pieces of broken jug,S.E.cor sec.10 Blk 47 1/2 H&TCRR Co.resurvey.

Returning to N.E.70,N.W.69 as above described,we ran south,searching carefully for corners,but found nothing for 20000 varas,all in sand.

At 19924 we found a 4x4 stake and a few rocks,

At 22600 varas looked for N.W.114,nothing but sand.

On south from this point N.W.114,at 1448 varas cross F.W.&D.RR.

at 3202 an iron pipe,

at 3222 another pipe,

at 5102 find earth mound and 4good old pits the original S.W.114,

on 20 varas further south find a rock and pipe set for N.E.33 Blk 2 and N.W.1 Blk 48.

From this S.W.114 we ran east ,at 4400 cross F.W.& D.RR.

at 5000 find nothing,

at 9188 cross C.R.I.&G.RR.

at 10000 in deep sand,

at 11440 find corner post of fence with

large rock lying by it.From the fence post an old,large,plain circular trench bears as described in resurvey Blk.48 at the N.E.cor sec.6.

Returning to point 5102 varas north of S.W.114,ran east,at 5000 nothing

but sand,at 10000,found nothing,at 101444 reach a point 7 1/2 varas

west of fence,turning instrument south could see fence on line near

N.E.cor.6 Blk.48.North at 850 varas find 4x4 post set by Mr.Trigg for

Syndicate subdivisions,on east line 111.

Returning to point 20000 varas south of N.E.70,as above noted,ran west,

At N 89°52'W 5020 varas reached a 2x4 stake and two tie plates set 600

varas south and 600 varas west of points in middle of Rito Blanco Crk.

These are the calls at the S.W.cor league 109,The banks of the creek ~~x~~ seem fairly permanent at these points,and show no sign of any great ~~sh~~ change,and the channel is not wide,so that if these calls are to be considered as accurate and of the first class they would fix the S.W.cor

of league 109 where described above as marked by iron plates.

We tested the creek bends for some other point which would fill the call but did not find any such points, the bends of the creek are peculiar as shown on sketch.

From this S.W.109 we ran west, at 407 cross F.W. & D.R.R. at 5140 found 4x4 stob on fence, 45 varas north of our ^{line} west line. Later we ran north from this stob as shown on sketch, but found no corners, creek calls fairly good.

At 10431 varas west of S.W.109 we reached a fence which would be 8 miles and 245 varas west of the east line of Block 2 B. & B. This fence was old, it ran S 30'W 668 varas and turned east. We looked carefully along all old fences as these fences are reported to have been set on lines run to the original corners at a time when original corners could be found.

At 15471 varas we found an iron coupling set in the middle of three old dim pits, the fourth gone in fireguard, at 200 varas east, found three dim pits. These corners were 112 varas north of our ^{line} west line, and some 10 varas south of a fence. Although not very plain we decided that they were probably the original S.W. cor 106 and N.E. cor 117.

Running north from this S.W.106, we crossed the RR. at 10842 varas, and at 15096 varas reach a point 242 varas west of 4 very plain old pits, the S.E. cor 74, Thence west 5018 from S.E.74 to a point for S.W.74, Thence ~~N~~

Thence north 37'E 4993 varas to 4 plain old pits S.W.61, on N 37'E at 3284 cross Rito Blanco, at 5000 sand, at 10081 original S.E.33 as above described.

From this S.E.33 N 09'E 5046 varas to a stone mound original S.E.25 On N 09'E 5033 to a point on line between original N.W.25 and N.E. 24 as before noted, for the N.E. cor 25.

Returning to S.E.105, ran west 5000 varas, in a lane, and sandy, found nothing, at 8587 varas reach east bluff of Carizzo Creek.

Note. This creek is called for on sbl 105 but is actually on ^S sbl 104. at 10000 found nothing, ran 20000 north finding no corners. Should have connected this point with N.W.74. Ran west 15000 to point 5283 south of S.W.54 as before noted.

On west from ~~xx2~~ S.W.106 at 10363 varas, or 10163 varas from N.W.117 and 5016 varas south find 4 plain old pits with 4x4 stake in corner, S.W.118

From this S.W.118 ran back east 5000 varas found nothing, on east 10164 varas found nothing. Set flag at N.E.117, and ran south, at 10000 from N.E. 117 looked for S.E.128 found nothing, on 318 varas middle of creek, on at 520 old south bank of creek. On at 11157 varas reach a point on the County line 882 varas west of 34 mile pipe. There is a difference of 43 varas in our measurement east from State line and the position of the 34th mile. Returning to line west from S.W.106 we ran on west 25000 varas and north 303 varas to point on the fence above noted as 25063 varas S 19'W from the S.W. cor league 54.

All lines shown on the sketch were actually run, except State line and County line.

I attach calculation of acreage based on the corners found, grouping the leagues in convenient blocks. It is not absolutely accurate but will give a fair average.

The above history of the survey is not an actual statement of the running of the lines but is given as an explanation of the facts shown in the sketch as developed by the work on the ground. All lines given were actually run but not always at the time nor in the order given above.

Many minor details are omitted in order to bring out the main facts as simply and clearly as possible.

Respectfully submitted

R. A. Doh

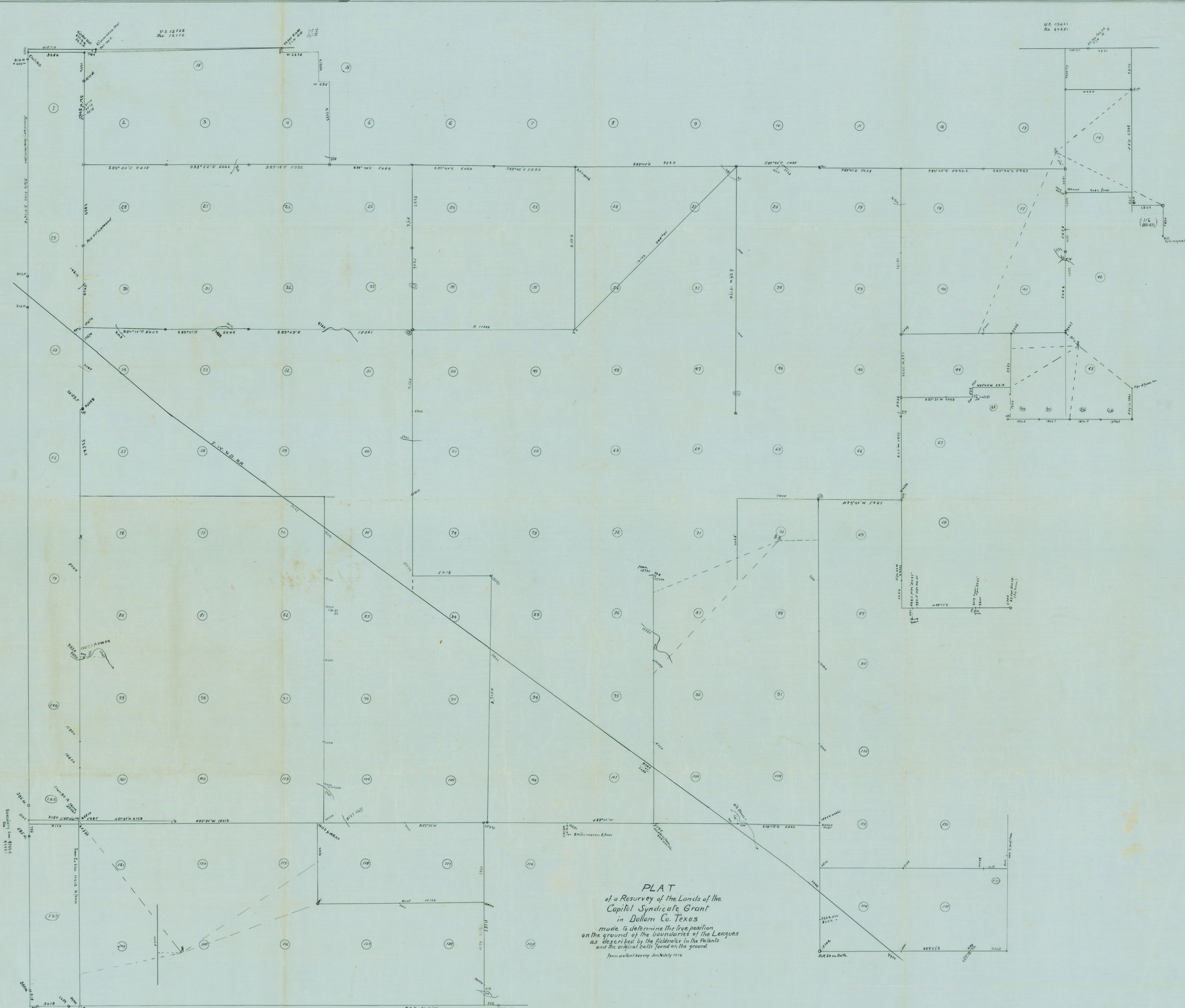
Assistant Surveyor.

Alpine, Texas August 15 1914

smaller
area than

U.S. 12108
No. 12110

U.S. 12108
No. 12110



PLAT
 of a Resurvey of the Lands of the
 Capitol Syndicate Grant
 in Dallas Co. Texas
 made to determine the true position
 on the ground of the boundaries of the Leagues
 as described by the fieldnotes in the Patents
 and the original calls found on the ground.
 from actual survey Jan. & July 1914

J. R. Doolittle, State Surveyor, certifies that the above
 Plat is true & correct, and that the bearings, distances
 and marks thereon, are shown as found on the
 ground by actual survey.
 Subscribed Aug 7 1914 J. R. Doolittle
 State Surveyor