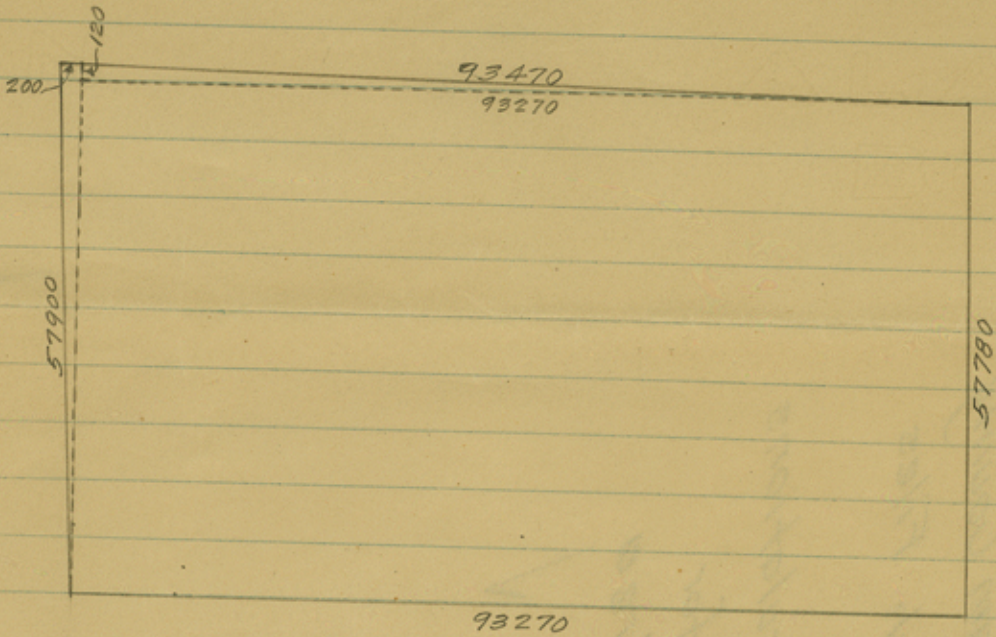


Dallam County



$$93270 \times 57780 = 5\,389\,140\,600$$

$$93270 \times 60 = 5\,596\,200$$

$$57900 \times 100 = 5\,790\,000$$

5,400,526,800 sq. vs.

956 624.29 Acres

1 494.73 sq. mi.

11

Dallam County
Sketch Files

Calculations
for
Area

✓