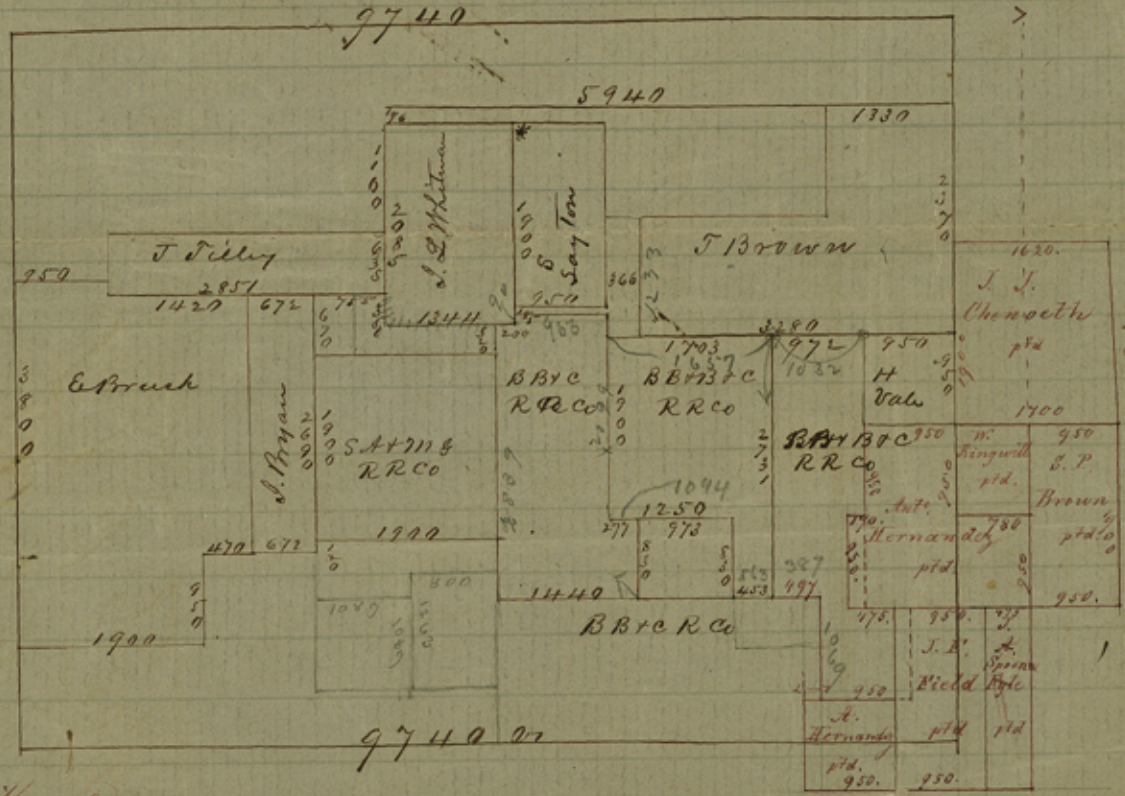


The part in red ink added in order to show discrepancy
 August 1. 1863.

W. Bond Prossberg,

9740
 750
 10520



1900
 470
 672
 1900
 1440
 972
 453
 497
 750
 950
 475
 10680
 10520

1600 difference

10680 difference 160.

* Suml. Layton's beginning corner, is the N.E. corner of an old survey in the name of H. Ritter - on which the Whitman Survey is made - Layton does not connect with the J. Brown Survey, although the Field notes, call to do so - its true position is given in the above sketch -

Counter 20435

W. H. Thomas
 County Surveyor

File 10.

Dallas County

13 miles N 75° E from Dallas.

Filed July 30, 1863.

Filed July 30/63

Shelton

Richardson
Filed 1926